

Einbaulage stehend (wie gezeichnet)  
 max. 60° geneigt  
 Installation position upright (as drawn)  
 tilt to any side max. 60°  
 Position de montage au repos (comme dessiné)  
 pente max. 60°  
 Posizione di montaggio verticale (come disegnato)  
 inclinazione max. 60°

Betriebsdruck max.: 14 bar  
 Operating pressure max.: 14 bar  
 Pressione di service max.: 14 bar  
 Pressione di esercizio max.: 14 bar

Staudruck bei 7 bar und 400 NI/min: < 0.4 bar  
 Dynamic pressure at 7 bar and 400 NI/min: < 0.4 bar  
 Pressione dinamica a 7 bar et 400 NI/min: < 0.4 bar  
 Pressione dinamica con 7 bar e 400 NI/min: < 0.4 bar

Schuetzelfestigkeit: 10g  
 Resistance against vibrations: 10g  
 Resistance aux vibrations: 10g  
 Resistenza alle vibrazioni: 10g

Klassifikation des Filters ≥ H13 (nach EN1822-1)  
 Classification of the filter ≥ H13 (according EN1822-1)  
 Classification du filtre ≥ H13 (selon EN1822-1)  
 Classificazione dei filtri ≥ H13 (secondo EN1822-1)

Thermischer Anwendungsbereich:  
 Funktionssicherheit -30°C...+65°C  
 Temperaturverträglichkeit -40°C...+80°C

Permissible temperature range:  
 Functional reliability -30°C...+65°C  
 Temperature compatibility -40°C...+80°C

Champ d'application thermique:  
 Sécurité de fonctionnement -30°C...+65°C  
 Temperature acceptable -40°C...+80°C

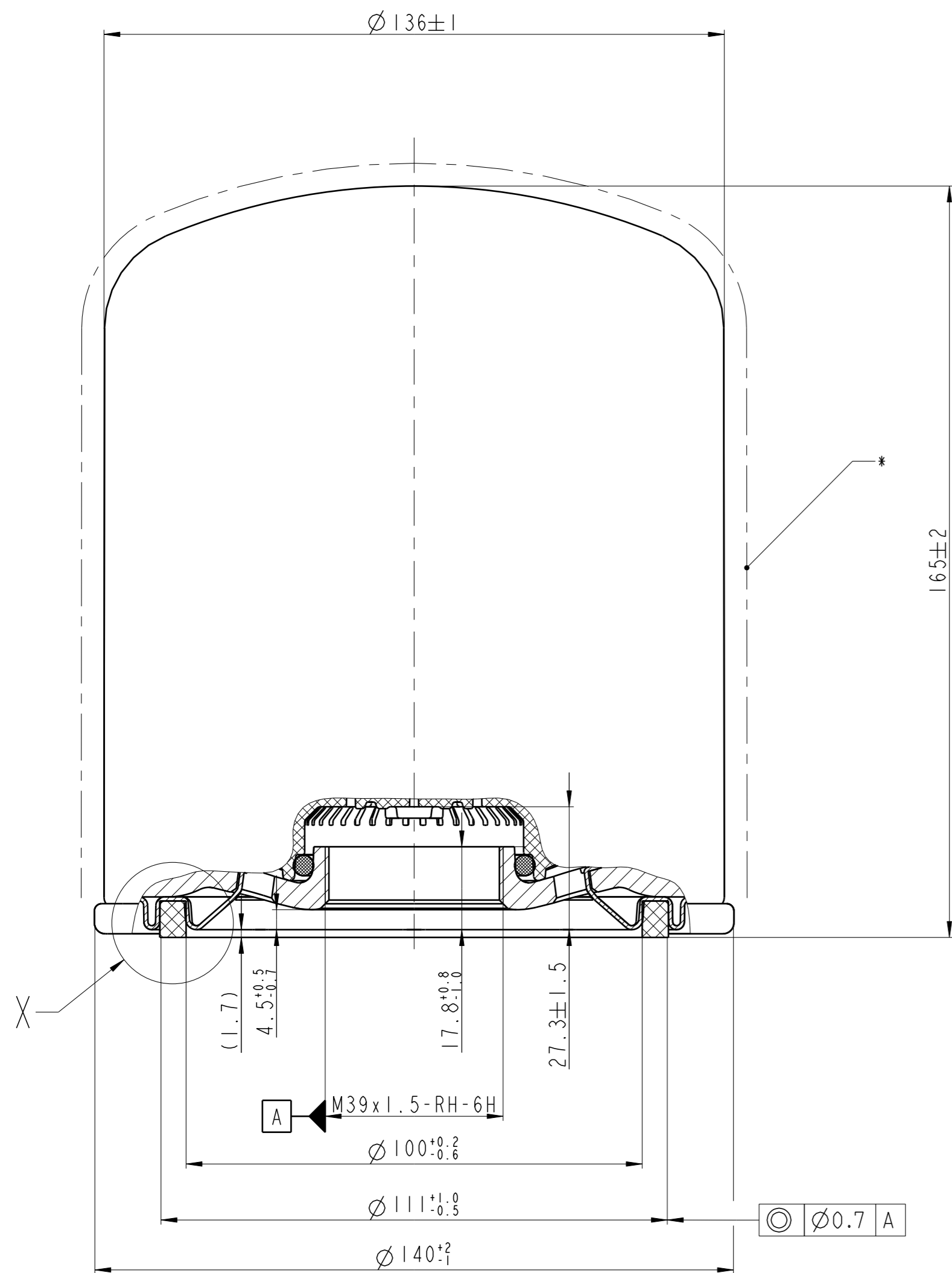
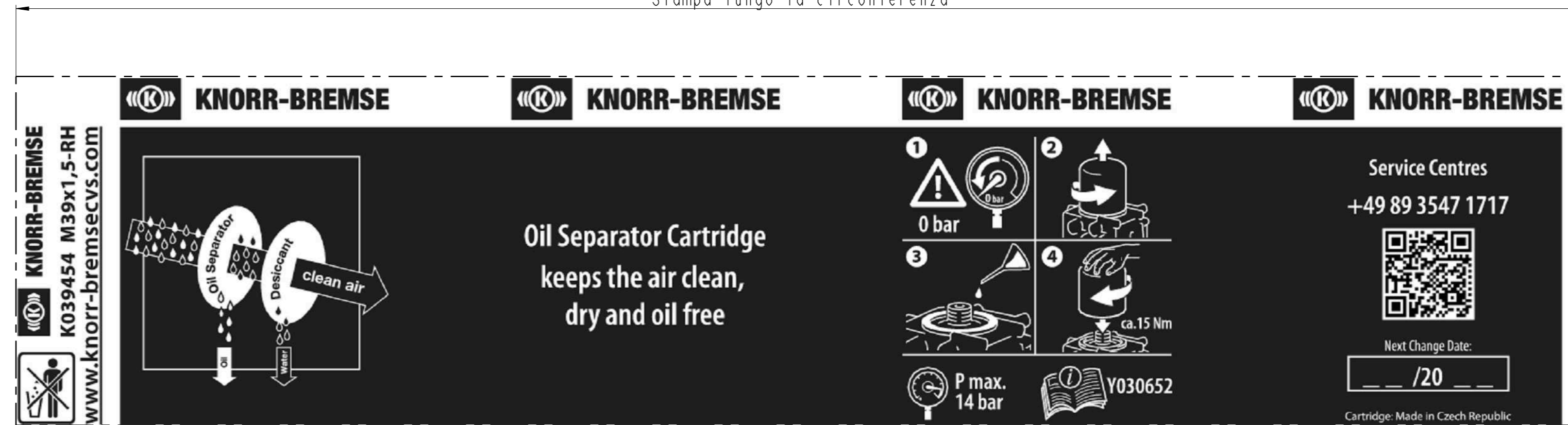
Campo d'impiego termico:  
 Sicurezza di funzionamento -30°C...+65°C  
 Temperatura accettabile -40°C...+80°C

Taupunktabsenkung: min. 30°C gemessen am Knorr-Bremse  
 Referenzsystem (Taupunkt der angesaugten Luft 11°C)  
 Dew point lowering: min. 30°C measured at Knorr-Bremse  
 reference system (dew point of the air intake 11°C)  
 Baisse de température de degivrage: min. 30°C mesuré sur  
 le système de référence Knorr-Bremse (degivrage de l'air 11°C)  
 Abbassamento punto di rugiada: min. 30°C misurato secondo  
 il sistema di riferimento Knorr-Bremse (punto di rugiada  
 dell'aria aspirata 11°C)

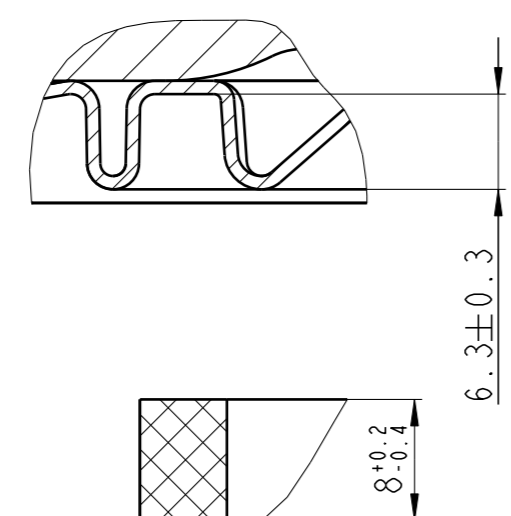
Text: RAL 9006 weissaluminium  
 Text: RAL 9006 white aluminium  
 Texte RAL 9006 aluminium blanc  
 Testo: RAL 9006 alluminio brillante

\*Gehäuse: Oberfläche RAL 5010 enzianblau  
 \*Housing: Surface RAL 5010 gentian blue  
 \*Carter: Surface RAL 5010 bleu gentiane  
 \*Carcassa: Superficie RAL 5010 blu genziana

Aufdruck ueber Umfang verteilt  
 Imprint over circumference  
 Impression sur la circonference  
 Stampa lungo la circonferenza



X 2:1  
 Dichtring demontiert  
 Sealing ring disassembled  
 Joint non assemblé  
 Anello di tenuta non assemblato



Zubehoer/Accessory/  
 Accessoires/Accessori  
 O-Ring/O-seal  
 Joint/Anello

### Disclaimer

The information contained herein is intended for the exclusive use of trained persons within the commercial vehicle industry. This product or component may be suitable only for the specific application set forth herein. Statements regarding the suitability of products for certain types of applications are based on Knorr-Bremse understanding of typical requirements. Such statements, however, are not binding statements about the suitability of products for any different application. It is at all times the user's responsibility to validate the suitability of a particular product for use in a different application than contained herein. This information does not purport to be all-inclusive and no responsibility is assumed as a result of its use. In no event may we be held liable for any damage or loss except in the case of willful intent or gross negligence on our part, or if any mandatory legal provisions apply.

003	Y254872	2016/08/26	Galkwad_P
002	TSK309082.C1R032722	2014/08/21	Pauner_B
001	TSK148086.C1R022795	2013/08/14	Hoerthagl
000	Serial release	2009/05/08	Riedi
Rev.	Revision Reference	Date	Name
Numbers of described parts:	ISO 128-30	Special Characteristics:	0 [S/C] Surface Treatment: Length Unit: mm Scale: 1:1
or	First Angle Proj.	Tolerancing Principle ISO 14405	Weight: 2.4 kg
See Table 1	General Tolerances ISO 2768 - m/Made from:		
CAD Model No.:	M023681	Corners ISO 13715	Desiccant Cartridge
Responsible Dept./Team	MDT2	CAD Sys.: PRO/ENGINEER Format A1	Trockenmittelpatrone
Drawn	2013/11/11	Riedi	Cartouche dessiccateur
Release Process Documentation in EDM, Level and Status Information in Watermark.			Cartuccia essiccatore
Knorr-Bremse Group			Drawing Number: Z045537
			Doc-Type: 10 Language: 71
			Draw-Rev: 003
			Sheet 1 of 1