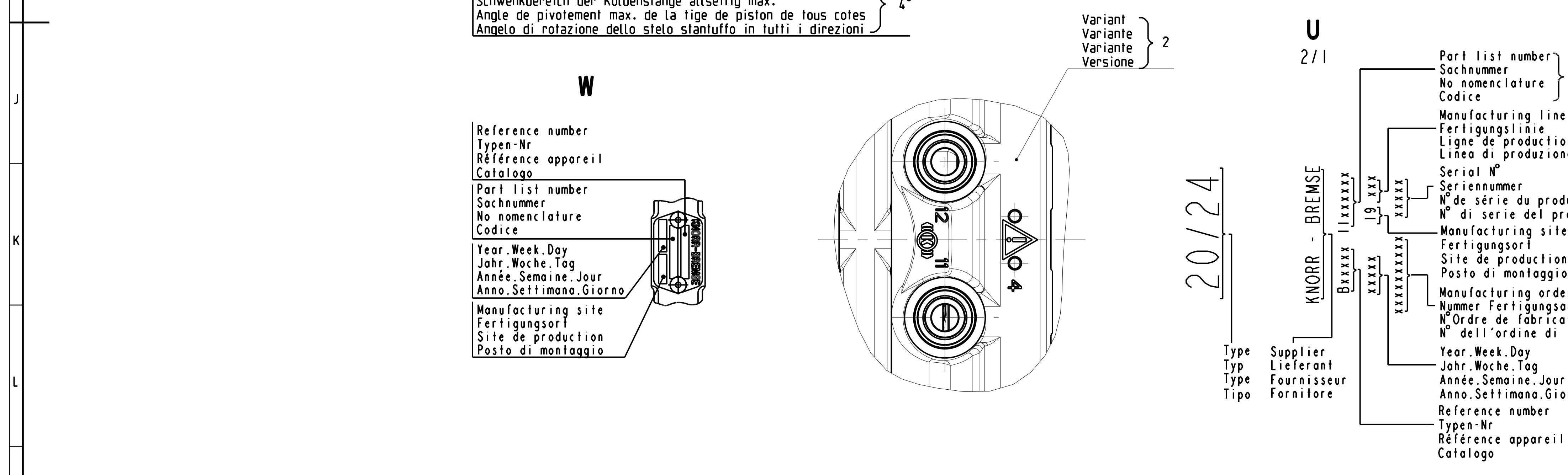
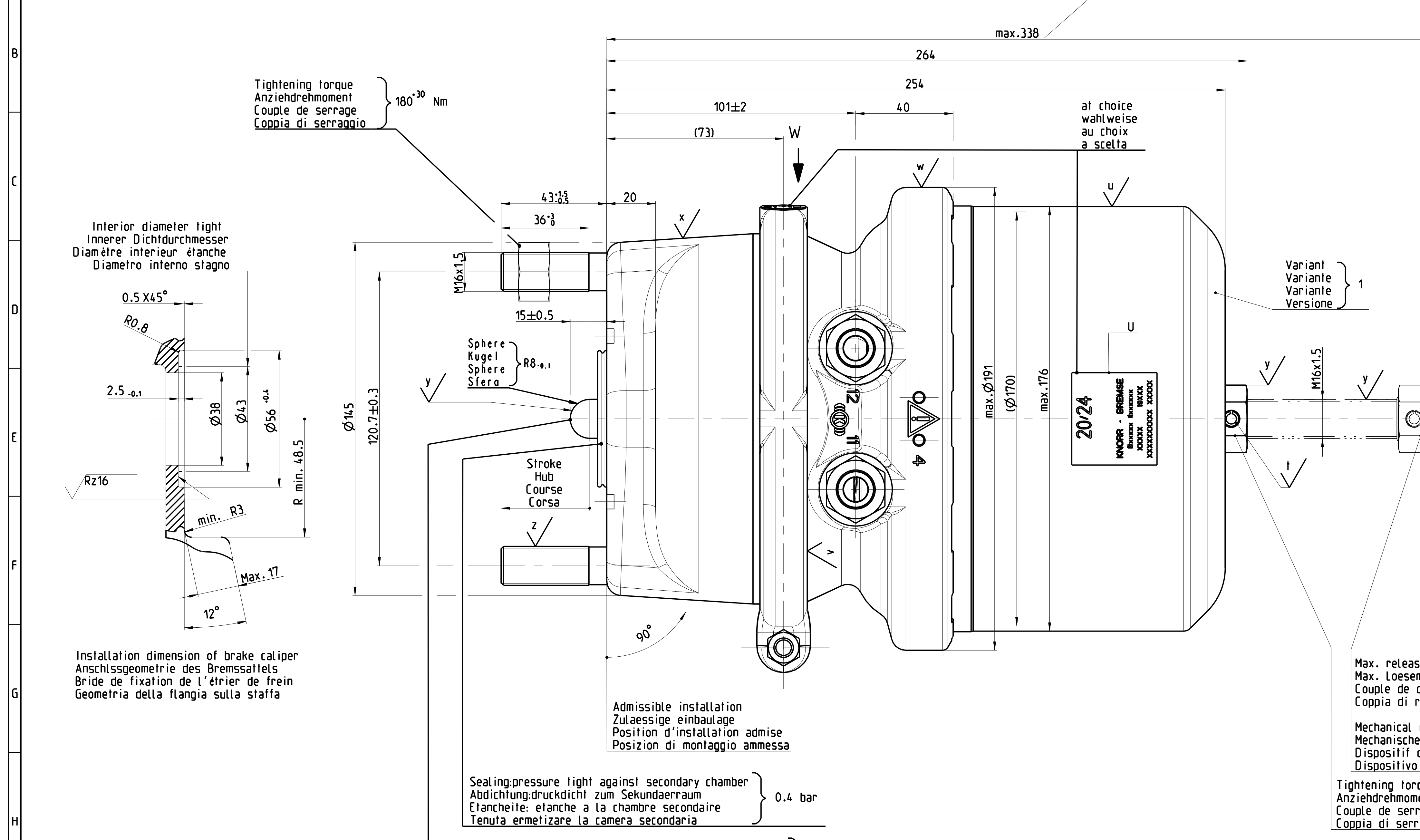
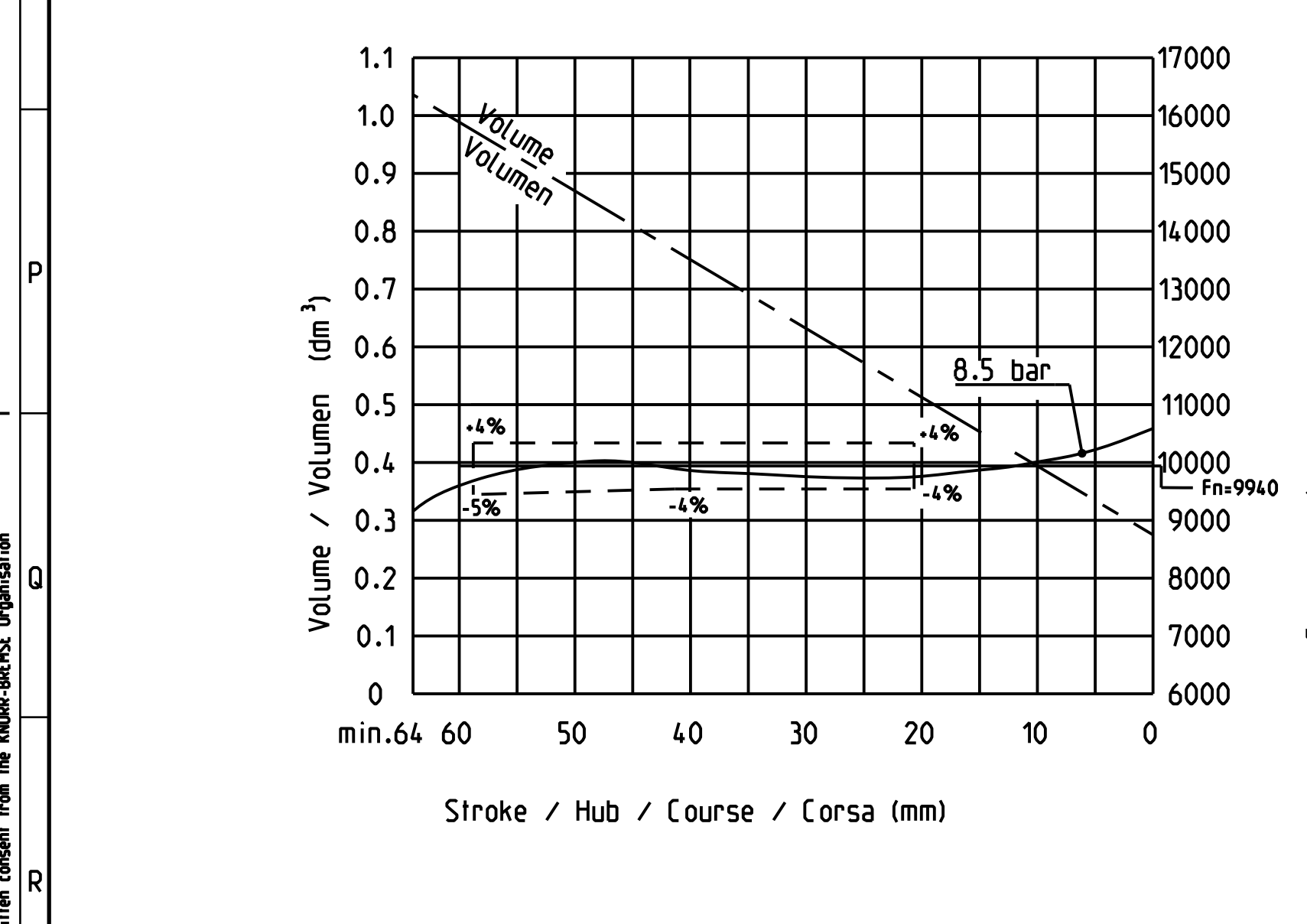


Tolerances/Toleranzen/Tolérances/Tolleranze						
Nominal dimensions in Nominale Maße in Cotes nominales en Dimensioni nominali in						
	mm					
<6	+6	>30	>80	>120	>315	⚡
	±1	±1.5	±2	±2.5	±3	



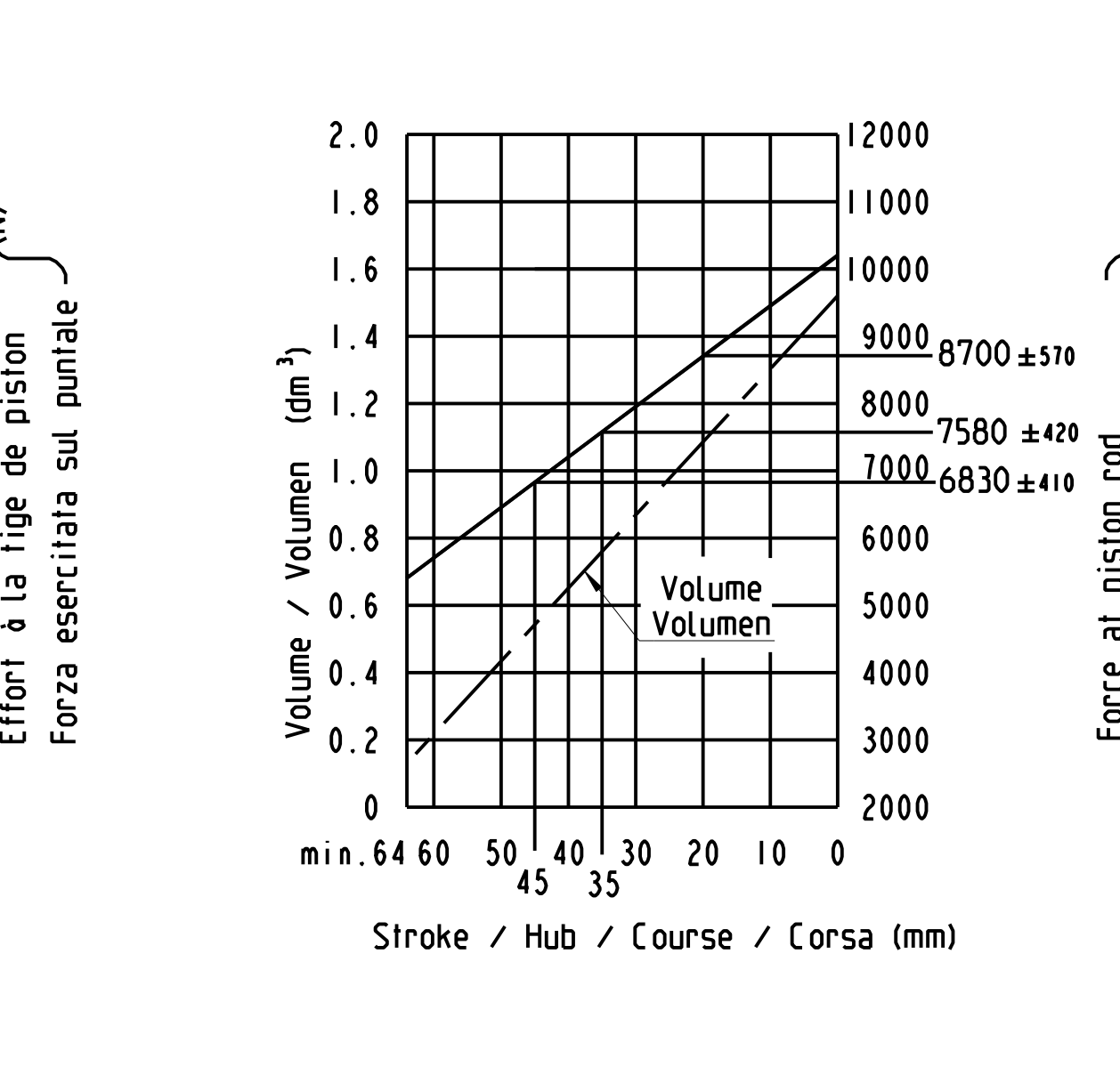
Force of return spring at stroke 0 mm
Kraftabgabe der Ruckhofeder bei Hub 0 mm
Force du ressort de rappel à une course de 0 mm
Forza della molla di ritorno a una corsa di 0 mm } F = 220³⁰ N

Diagram of service brake
Diagramm der Betriebsbremse
Diagramme du frein de service
Diagramma del freno di servizio } Type 20



Required release pressure
Erforderlicher Loesedruck
Pression de desserrage nécessaire
Pressione di rilascio necessaria } 5.1 ± 0.3 bar

Diagram of spring loaded cylinder
Diagramm des Federspeichers
Diagramme du cylindre à ressort
Diagramma del cilindro a molla } Type 24

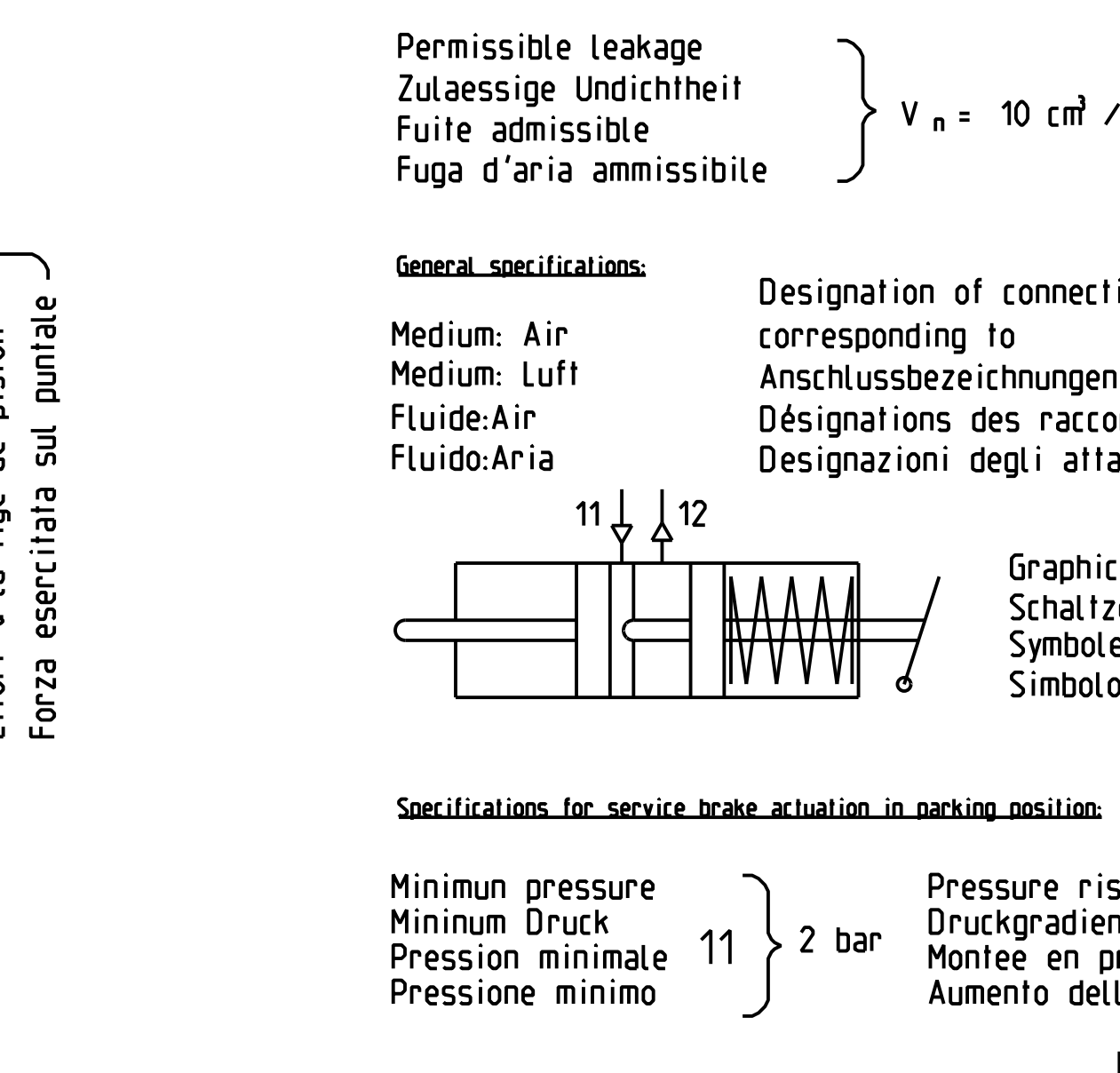


Operational uses specifications:

Max. operating pressure
Max. Betriebsdruck
Pression de service max.
Pressione d'esercizio max. } 10.2 bar

Max. operating pressure
Max. Betriebsdruck
Pression de service max.
Pressione d'esercizio max. } 8.5 bar

Permissible leakage
Zulaessige Undichtheit
Fuite admissible
Fuga d'aria ammissibile } V_n = 10 cm³/min



Critical uses specifications without part failure:

Max. pressure
Hochstdruck
Pression max.
Pressione massima } 11 } 13 bar

Max. pressure
Hochstdruck
Pression max.
Pressione massima } 12 } 11 bar

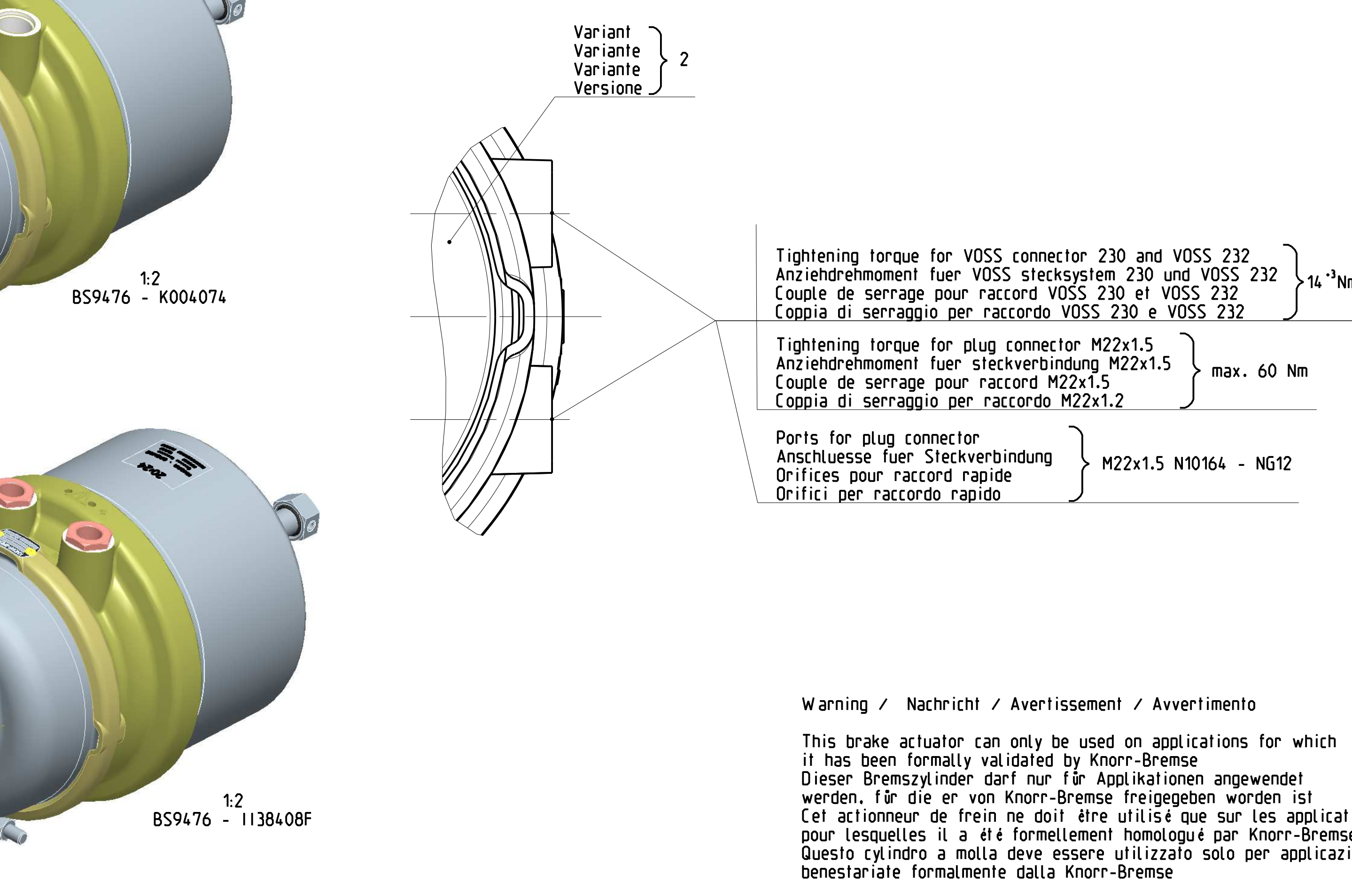
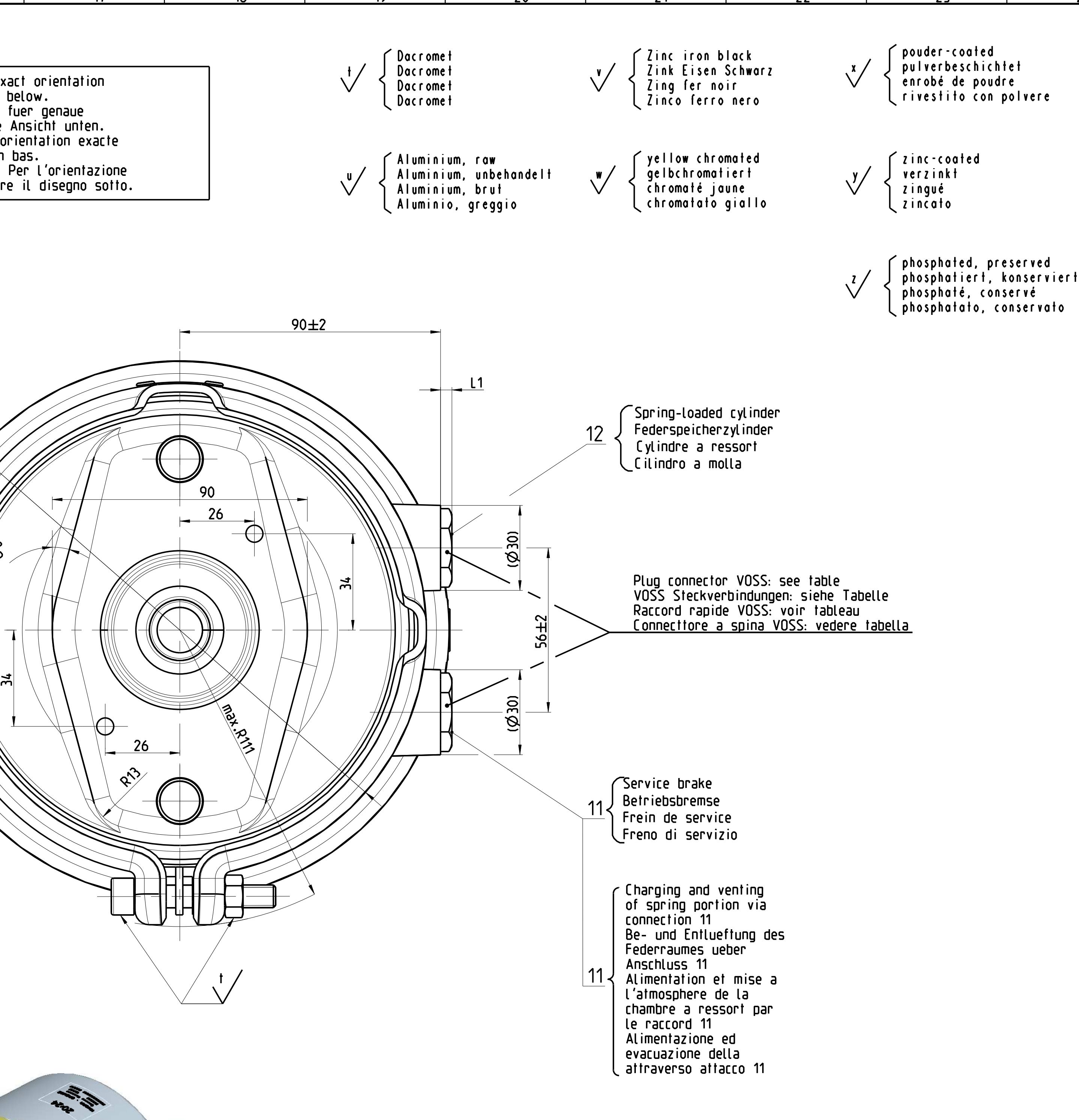
Temperature range
Therm. Anwendungsbereich
Plage de température
Campo termico di applicazione } -40°C bis +80°C

General specifications:

Medium: Air
Medium: Luft
Fluide: Air
Fluido: Aria

Exhaust holes must be directed downwards when mounted
Entlüftungen müssen im eingebauten Zustand nach unten zeigen
Les orifices d'échappement doivent être dirigés vers le bas en état monté
Installato i fuori di scarico dovranno essere rivolti verso il basso

Breather holes opened
Atmungsbohrungen geöffnet
Trous de respiration ouverts
Fiori di respirazione aperti } ∅6



BS9476 - K004074	0501 321 353			2	7.6
BS9476 - 1138408F	0501 317 952		230	4	7.6

KB-Ref.number KundenBestell-Nr. KB-No de réf. Codice KB per ordina	Customer's ref.n° Ausführung No de réf. du client Codice cliente per ordina	Execution Ausführung Exécution Montato	VOSS Stecksystem	L1	Variant Variante Versione	Weight Gewicht Masse Masse (kg)

00	000000	29.01.2010	LM
Rev.	Revision Reference	Date	Name
1	150 129-30	20100129	LM
2	150 129-30	20100129	LM
3	150 129-30	20100129	LM