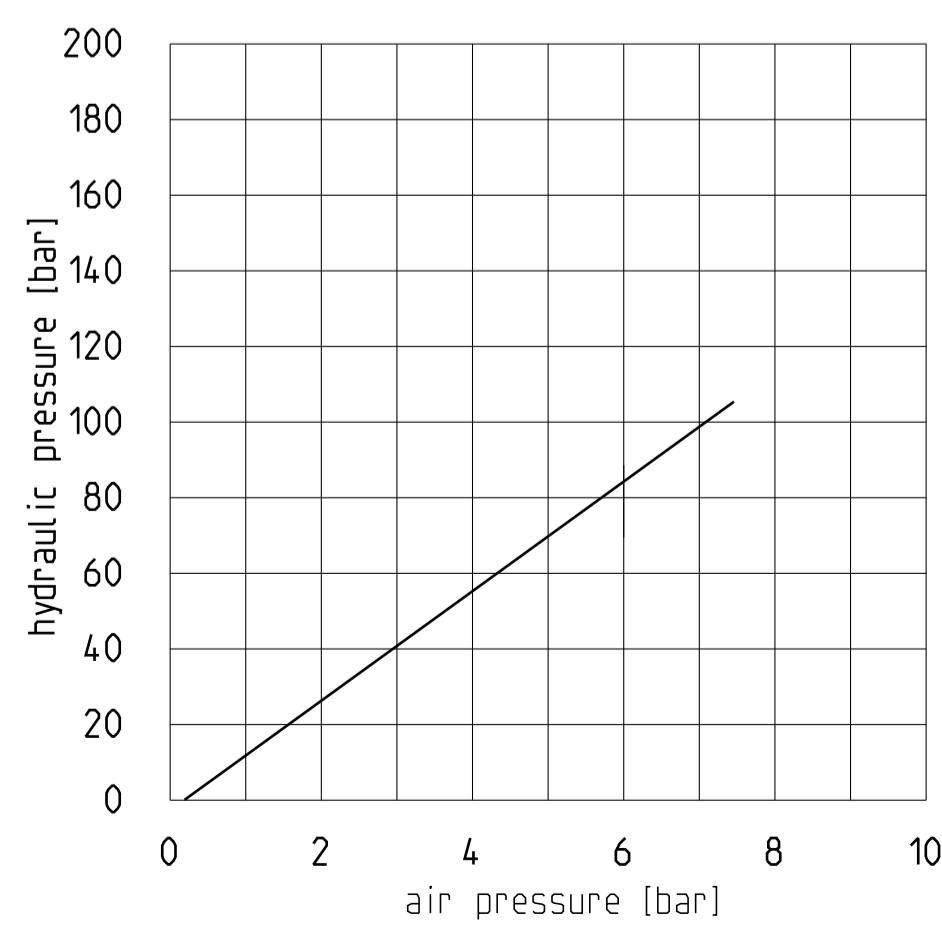
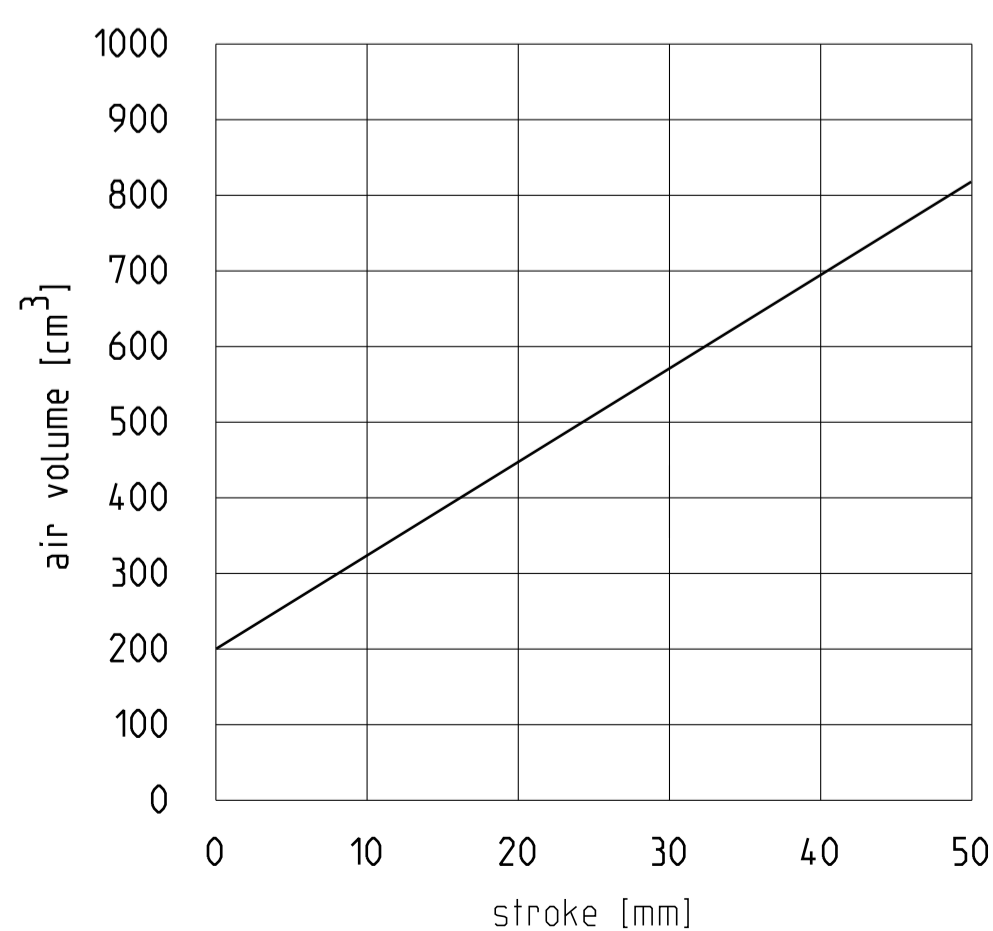
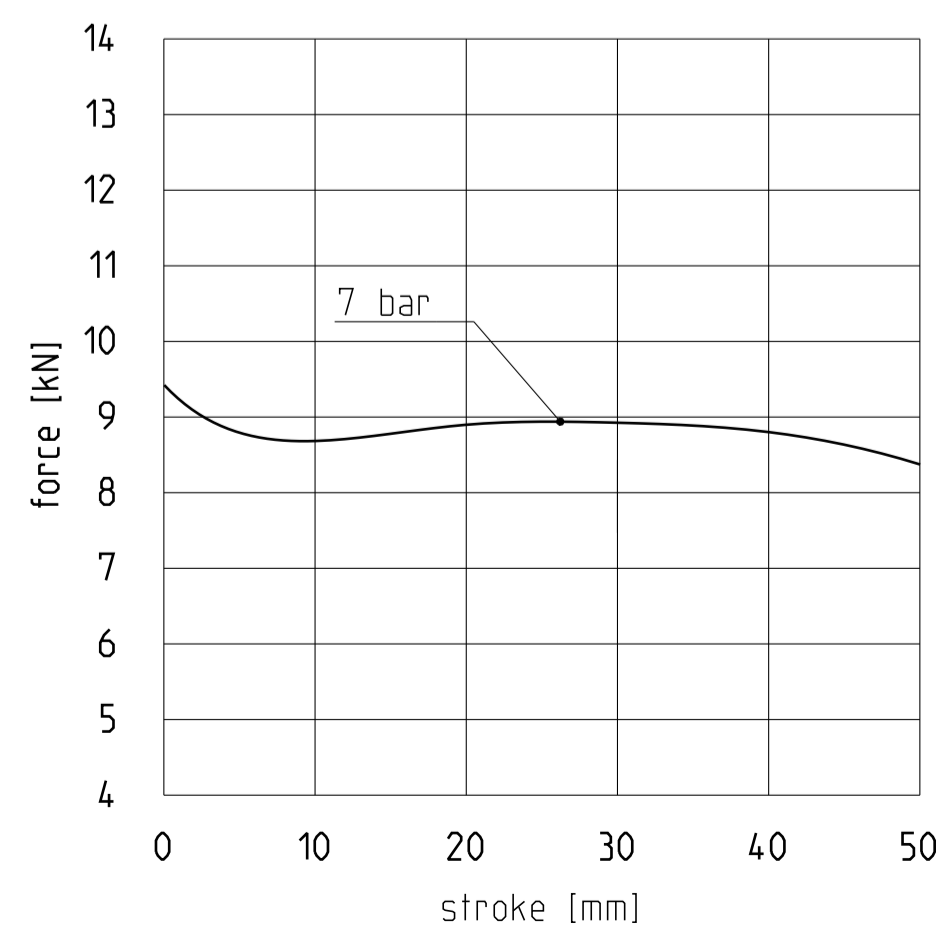
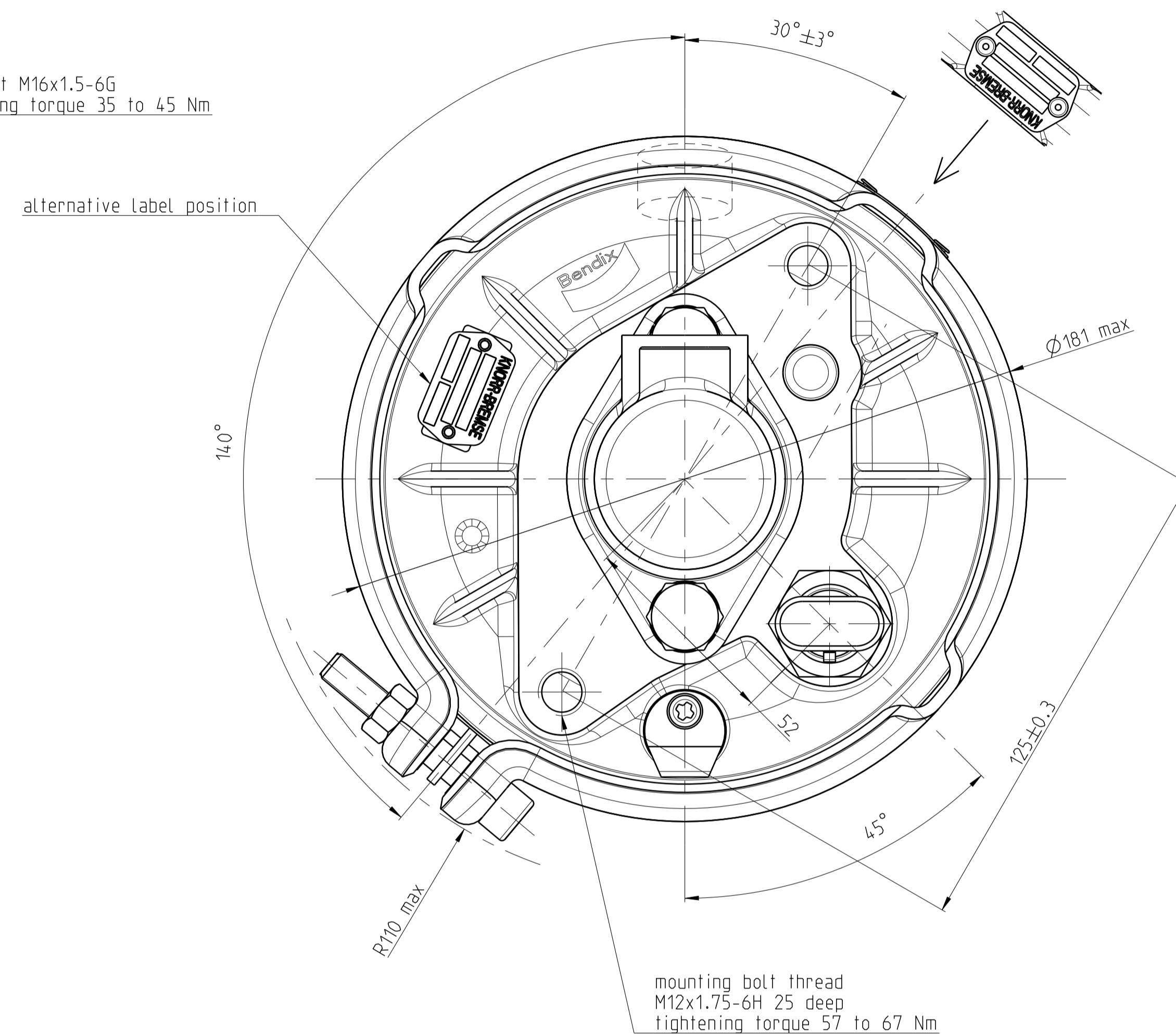
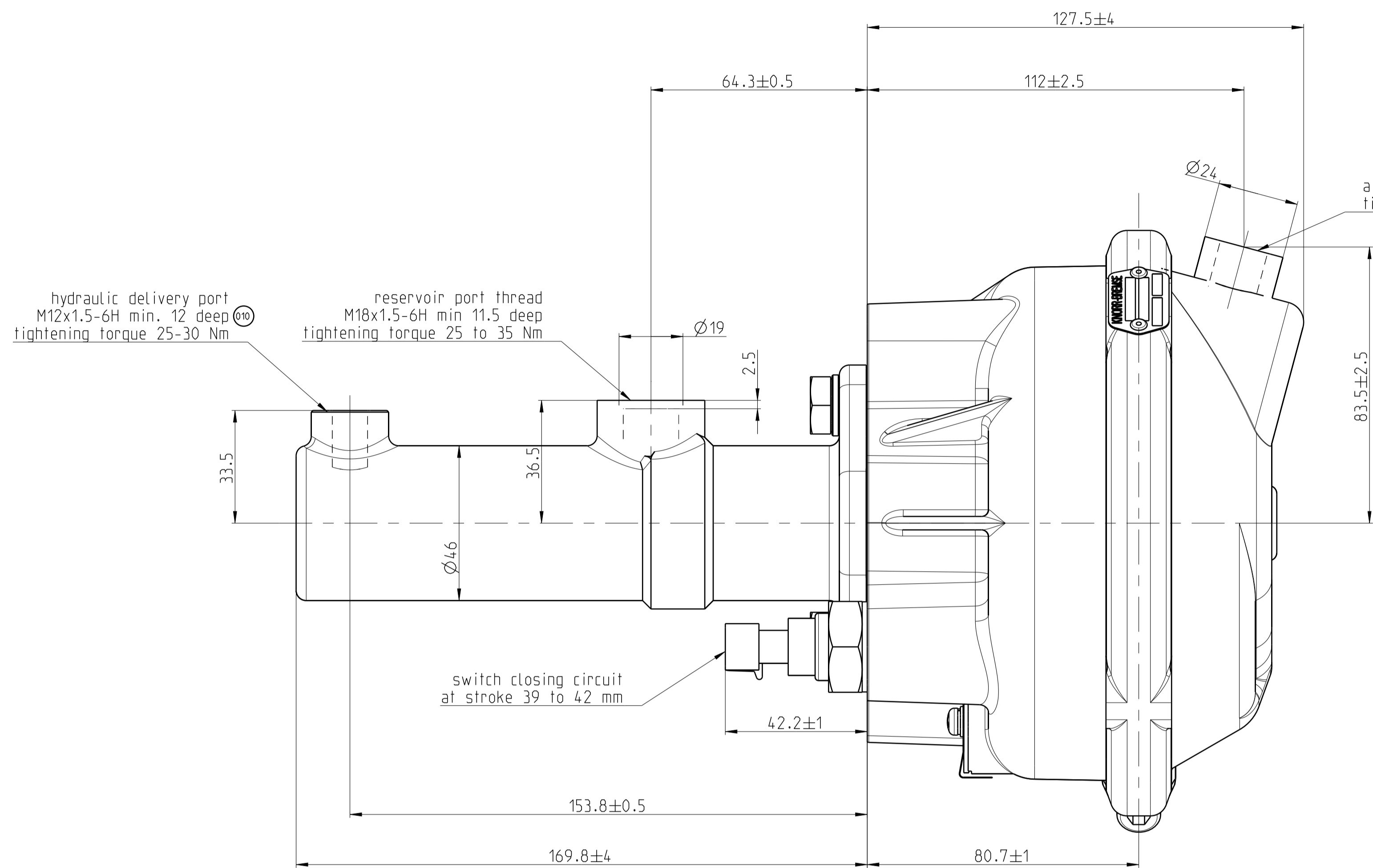
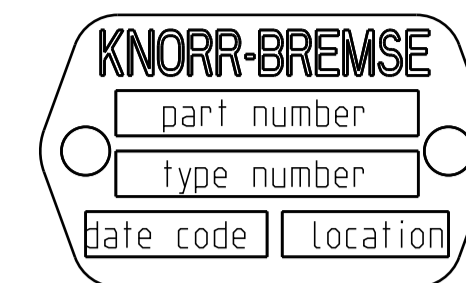


Tolerances Tolerances Tolerances Toleranza	Nominalmasse in [mm] Nominal dimensions in [mm] Cotes nominales en [mm] Dimensioni nominali in [mm]					[mm]
< 6 = 30	> 6 = 30	> 30 = 80	> 80 = 120	> 120 = 315	> 315	
±0.5	±1	±1.5	±2	±2.5	±3	±2.5°

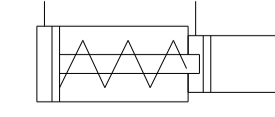
This product or component is suitable for the specific application or application type defined herein and is not suitable for any other applications.

identification label content



maximum operating pressure 7.7 bar
 temperature range -40°C +80°C
 hydraulic cylinder bore 33.34 mm
 displacement 43.9 cm³
 brake fluid DOT3 / DOT4

graphic symbol DIN ISO 1219



010 thread deepness corrected CR037452	3.11.2015	Siribny	EF620AK	
009 BC length correction CR035507	15.5.2015	Siribny		
008 dimensional corrections	11.12.2014	Siribny		
Rev.	Revision Reference	Date	Name	
Numbers of described parts:	ISO 128-30	Special Characteristics:	0 [S/C]	Surface Treatment: --
or	First Angle Proj.	Tolerancing Principle	0 [C/C]	Length Unit: mm Scale: 1:1
See Table 1	General Tolerances	Made from:	Material: --	Weight: 3.8 kg
CAD Model No.:	K107368	Comers		
	CAD Sys.: PRO/ENGINEER/Format A1	Type 20 Air Hydraulic Actuator with MC20		
Systemy pro užitkovou vozidla CR s.r.o.	Responsible Dept./Team HDA1	Drawn 10.12.2014	Siribny	
	Knorr-Bremse Group	Release Process Documentation in EDM, Level and Status Information in Watermark.	Drawing Number DY5566	Drw-Rev: 010
			Doc-Type: 10	Language: EN

This document contains proprietary and confidential information and such information may not be disclosed without the prior written consent from the KNORR-BREMSE organization.

100 mm