

# UP2DATE

## NEW SERVICE CONCEPT FOR AIR DISC BRAKES: SCANIA SN7-HP AND SB7 RADIAL-HP APPLICATIONS

**Knorr-Bremse has expanded its Air Disc Brake portfolio with the SN7-HP and SB7 radial-HP version and is now offering the related Service Concept to the independent aftermarket.**

In the fourth quarter of 2016 Scania started to implement a modification of the well-known Knorr-Bremse SN7: the so-called SN7-HP, which is characterized by an up to 30kNm brake performance and a new axle interface. This modification was also transferred to the SB7 radial-HP version.

The main difference of the modified Service Concept lies in the Brake Pads. The new pads are equipped with a defined shape. Of course they are backward compatible and thus also applicable for predecessor generations, i.e. the Brake Pads for SN7 Calipers for Scania application can also be maintained with the new Brake Pad Kit.

Additionally, the Service Concept for Air Disc Brake SN7-HP and SB7 radial-HP for Scania contain a modernized Guide and Seal Kit, to optimize the interface. This modernization is backwards compatible to all SN7 and SB7 applications with CFG bushings.

### At a glance

- › SN7-HP and SB7 radial-HP Service Kits now available to the Independent Aftermarket
- › Reliable service due to well-established Service Concept
- › Perfect fit and performance thanks to OE quality



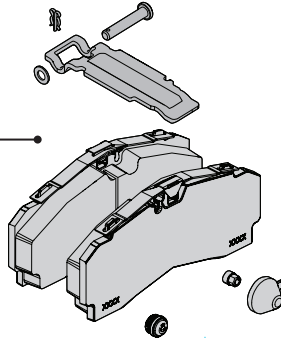
A complete overview of the Service Concept for Knorr-Bremse Air Disc Brake for Scania SN7-HP and SB7 radial-HP can be found on the following page.

For further information on the service of the air disc brakes please take a look into the Knorr-Bremse Service Manual Y006471.

## SERVICE CONCEPT: AIR DISC BRAKE FOR SCANIA SN7-HP

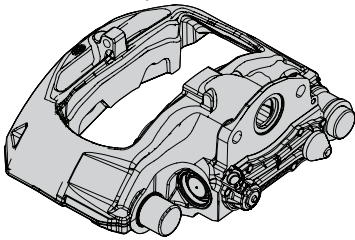
### Brake Pad Kit

K071018K50 (Truck)\*  
K108461K50 (Bus)\*\*



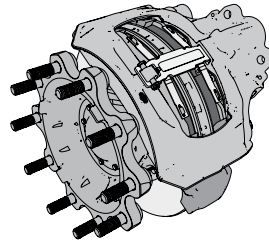
### IAM Rationalized Caliper

K146388K50



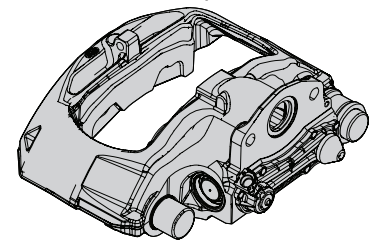
### OE Air Disc Brake SN7-HP

K100268*	K100269*
K100270**	K100271**
K154528*	K154529*
<b>Scania OE Part No. <sup>1)</sup></b>	
2187969*	2187971*
2187975**	2187978**
2645205*	2645206*



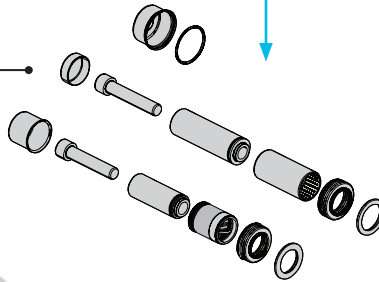
### IAM Rationalized Caliper

K146387K50



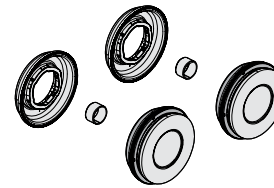
### Guide and Seal Kit

K133158K50



### Tappets Kit

K010603



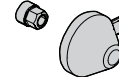
### Carrier

Currently not available in IAM



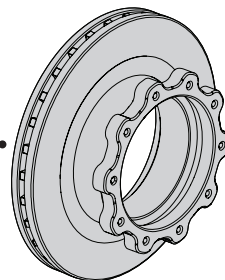
### Adjuster Cap Kit

K000029



### Brake Disc

K000810



€ - A core return surcharge will apply

<sup>1)</sup> Please note, the above listed cross-references to the manufacturer's numbers are only intended as a guide for identifying the relevant IAM part numbers. Images shown are for guidance only and may differ slightly from the actual product.

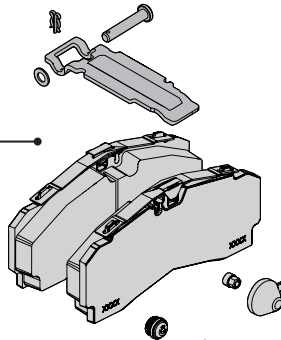
\* Truck application

\*\* Bus application

## SERVICE CONCEPT: AIR DISC BRAKE FOR SCANIA SB7-HP RADIAL

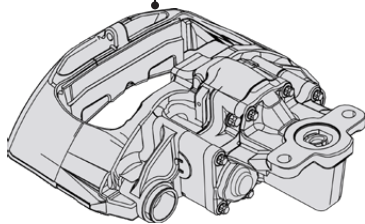
### Brake Pad Kit

K071018K50 (Truck)\*  
K108461K50 (Bus)\*\*



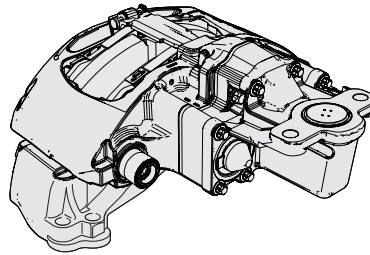
### IAM Rationalized Caliper

K040946K50



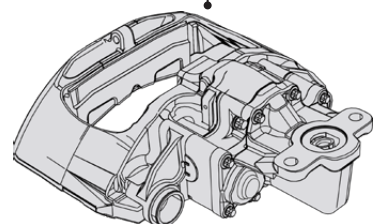
### OE Air Disc Brake SB7-HP

K114413*	K114414*
K114415**	K114416**
<b>Scania OE Part No. <sup>1)</sup></b>	
2534805*	2534806*
2534807**	2534809**



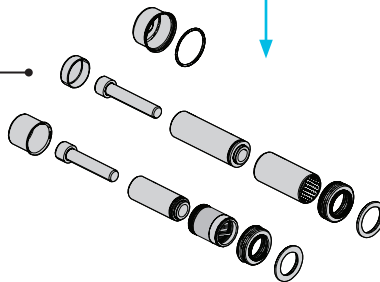
### AM Rationalized Caliper

K040945K50



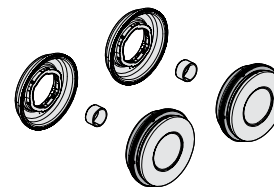
### Guide and Seal Kit

K133158K50



### Tappets Kit

K010604



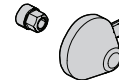
### Carrier

Currently not available in IAM



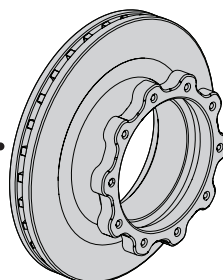
### Adjuster Cap Kit

K000029



### Brake Disc

K000810



€ - A core return surcharge will apply

<sup>1)</sup> Please note, the above listed cross-references to the manufacturer's numbers are only intended as a guide for identifying the relevant IAM part numbers. Images shown are for guidance only and may differ slightly from the actual product.

\* Truck application

\*\* Bus application

**KEEP IT RUNNING**

**Up-to-date information on our products can be found on our website [truckservices.knorr-bremse.com](https://truckservices.knorr-bremse.com)**



**TRUCKSERVICES**

**Knorr-Bremse Systems for Commercial Vehicles**

Moosacher Strasse 80 | 80809 Munich | Germany

Tel: +49 89 3547-0

Fax: +49 89 3547-2767

[truckservices.knorr-bremse.com](https://truckservices.knorr-bremse.com)

**Note**

All information is subject to change. A printed version of this document may therefore not correspond to the latest revision. To obtain the latest version, please visit our website [truckservices.knorr-bremse.com](https://truckservices.knorr-bremse.com) or contact a Knorr-Bremse representative in your area.

If service work is carried out on a vehicle based on information provided herein, it is the responsibility of the workshop to ensure the vehicle is fully tested and in full functional order before the vehicle is returned into service. Knorr-Bremse accepts no liability for problems caused as a result of appropriate tests not being carried out.

**Copyright © Knorr-Bremse AG**

All rights reserved, including industrial property rights applications. Knorr-Bremse AG retains any power of disposal, such as for copying and transferring.

**Disclaimer**

The information contained herein is intended for the exclusive use of trained persons within the commercial vehicle industry, and must not be passed on to any third party. All recommendations regarding products and their servicing or usage are with reference to Knorr-Bremse products and should not be considered applicable to products from other manufacturers. This information does not purport to be all-inclusive and no responsibility is assumed as a result of its use. We cannot accept any liability nor offer any guarantee regarding data accuracy, completeness or timeliness. The information does not represent any guarantee or ensured characteristics of the Products or Systems described. No liability can be accepted based on the information, its use, recommendations or advice provided. In no event may we be held liable for any damage or loss except in the case of wilful intent or gross negligence on our part, or if any mandatory legal provisions apply. This disclaimer is an English translation of a German text, which should be referred to for all legal purposes. Any legal disputes arising from the use of this information shall be subject to German law.