

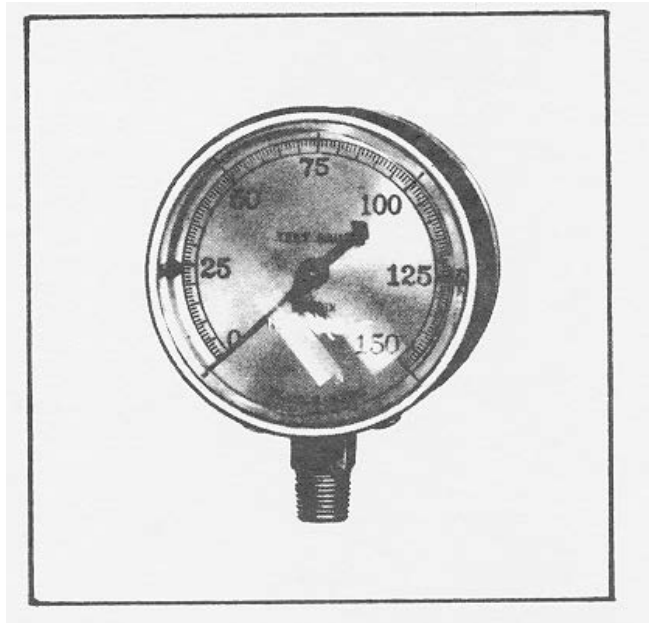
Technical Bulletin

Bulletin No.: TCH-006-003 Effective Date: 7/15/83

Cancels: PRO-06-01 of 6/1/80

Page: 1 of 1

Subject: **Test Gauge #216390 Services & Replacement Parts**



The 216390 Test Gauge is a high quality precision test gauge providing accurate air pressure readings. It is generally used in the testing of air brake components and systems.

Service or repair parts for this gauge may be obtained by direct contact to the H.J. Kirby Corporation, 29325 Clemens Road, Westlake, Ohio 44145; Phone (a/c 216) 835-3440.

When an inquiry is made, the proper description to be used is "Marsh Inspector Test Gauge". The most common part required is the glass, part #33804-3.

This gauge is listed on Page 96-A-1 of the Service Parts Catalog.

