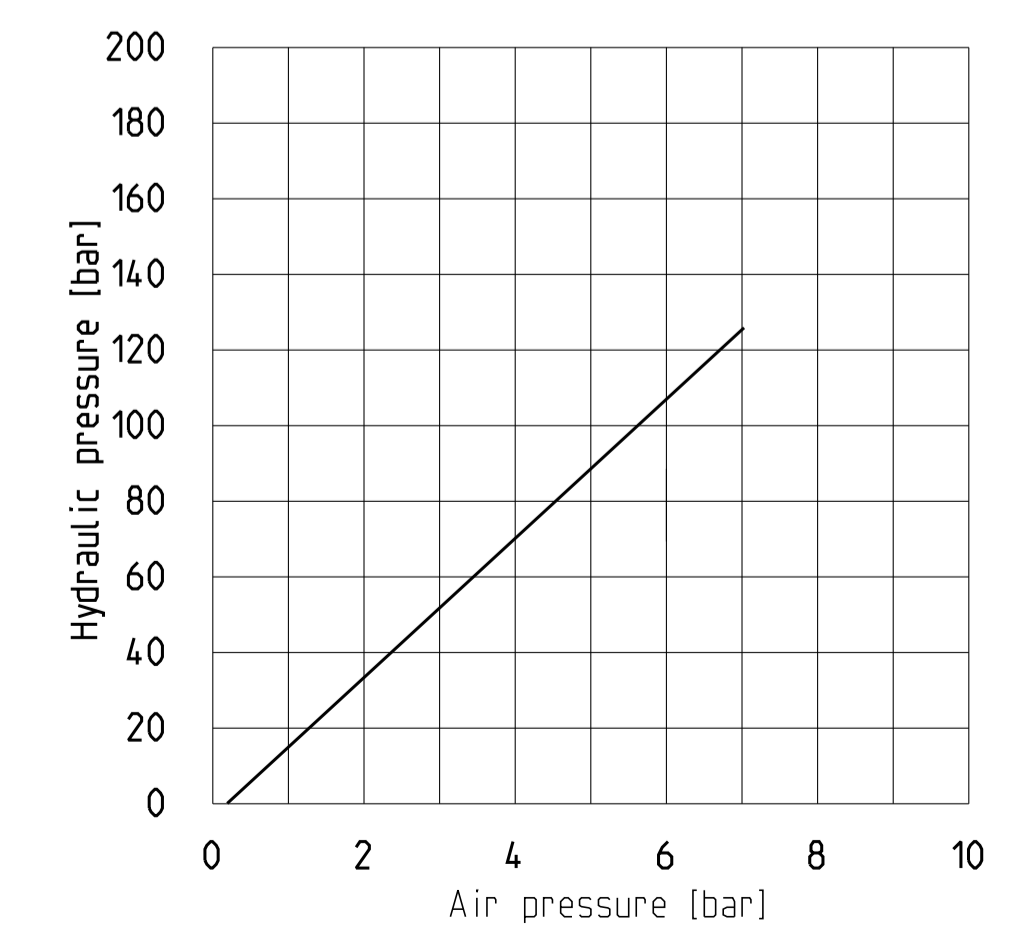
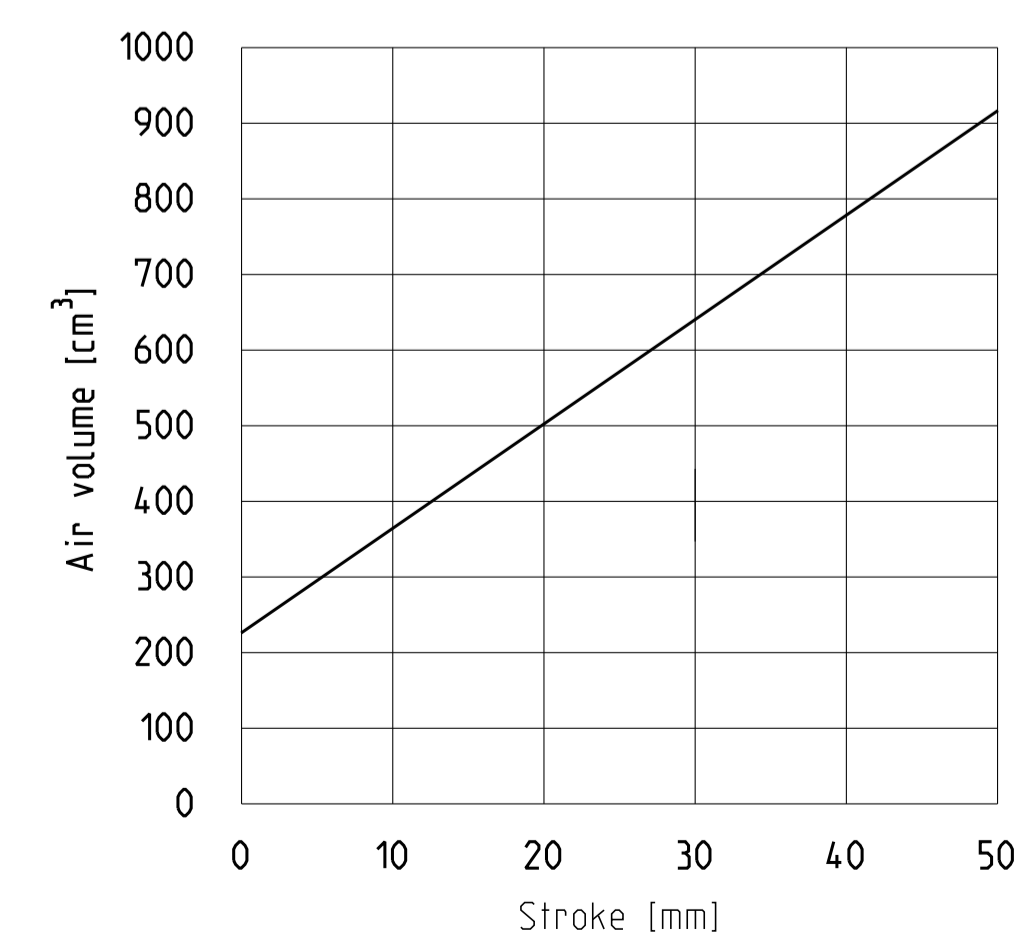
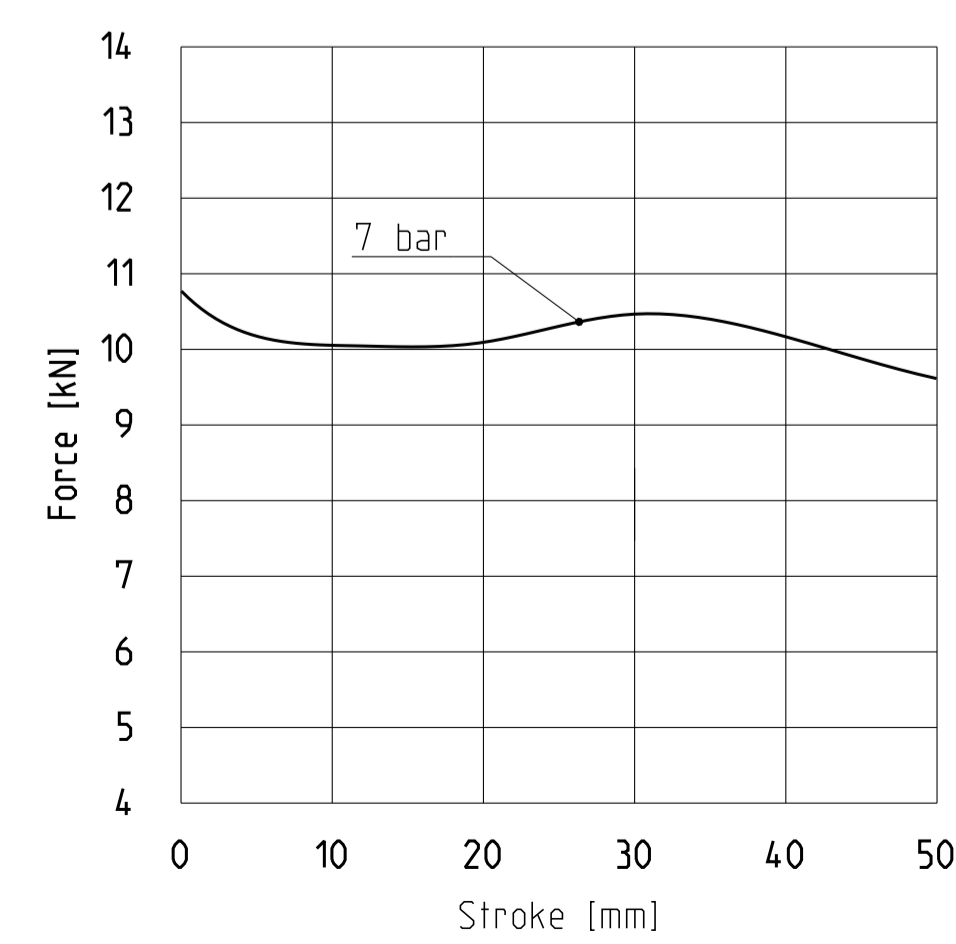
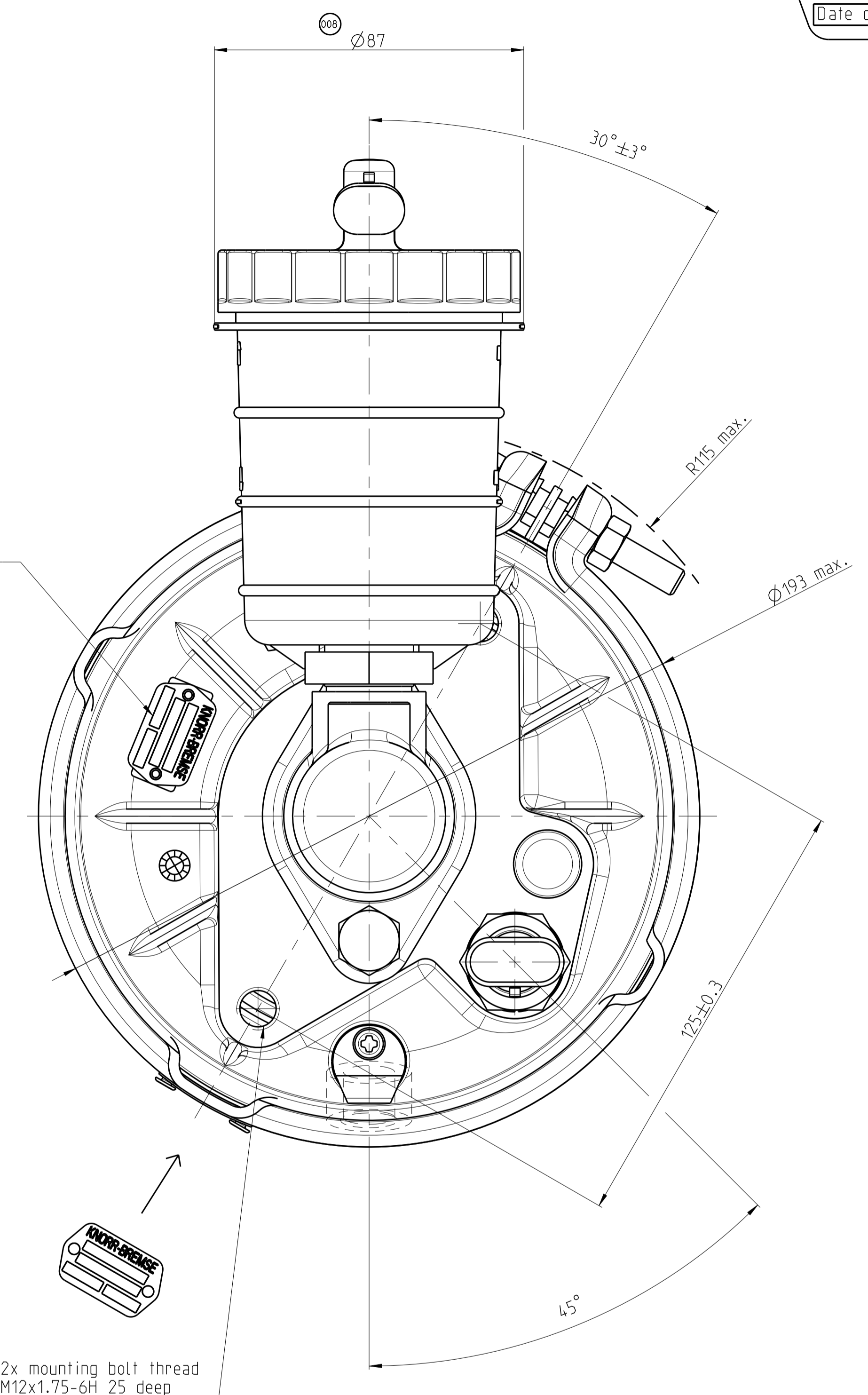
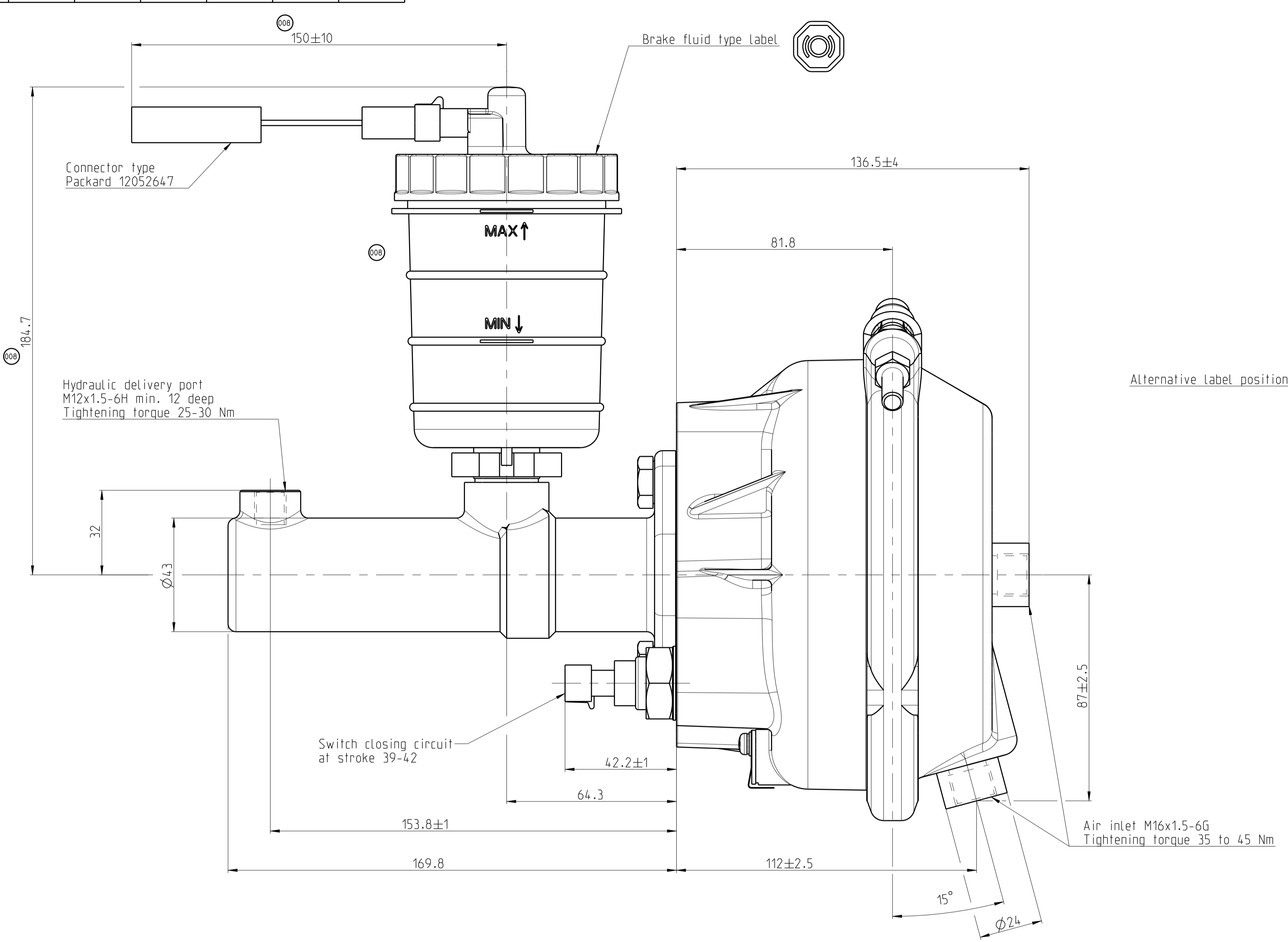


Tolerances Tolerances Tolerances Toleranza		Nominalmasse in [mm] Nominal dimensions in [mm] Cotes nominales en [mm] Dimensioni nominali in [mm]					[mm]
< 6	> 6 = 30	> 30 = 80	> 80 = 120	> 120 = 315	> 315		
±0.5	±1	±1.5	±2	±2.5	±3	±2.5°	

This product or component is suitable for the specific application or application type defined herein and is not suitable for any other applications.

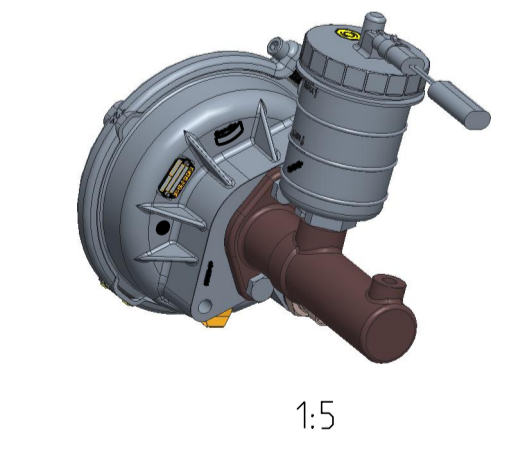
Identification Label content

Part number  
Type number  
Date code Location



Maximum operating pressure 7 bar  
Temperature range -40°C +80°C  
Hydraulic cylinder bore 31.75 mm  
Displacement 39.8 cm<sup>3</sup>  
Brake fluid DOT3 / DOT4

Graphic symbol DIN ISO 1219



008	CR0060168 - new reservoir	30.03.2021	KonP	EF624AX
007	Thread deepness change CR037452	3.11.2015	Stribny	
006	BC length corrected CR035507	15.05.2015	Stribny	
005	dimensional corrections	11.12.2014	Stribny	
Rev.	Revision Reference	Date	Name	
Numbers of described parts:	ISO 128-30	Special Characteristics:	0 [S/C] Surface Treatment: Length Unit: mm Scale: 1:1	
or	First Angle Proj.	Tolerancing Principle	Material: -x- Weight: 4.55 kg	
See Table 1	General Tolerances	Made from:		
CAD Model No.:	EF624AX	Material:		
	CAD Sys.: Creo 4.0 Format A1	Material:	Type 24 Air Hydraulic Actuator with MC19	
System pro užití v vozidle CR s.r.o.	Drawn 10.12.2014	Stribny		
	Release Process Documentation in EDM, Level and Status Information in Watermark.	Doc-Type: ID Language: EN	Sheet 1 of 1	

100 mm

This document contains proprietary and confidential information and such information may not be disclosed without the prior written consent from the KNORR-BREMSE organization