

# UP2DATE

## Knorr-Bremse NG4 EVO PRO Spring Brake Actuators - for pneumatic disc brakes in Schmitz trailer applications

### Weight-reduced wheel end - optimized for 9t semi-trailer axle applications

Knorr-Bremse introduced the latest product generations in the OE:

- **Pneumatic disc brakes type SyT7**
- **Double diaphragm cylinder type NG4 EVO PRO**

This harmonized wheel end has been used in Schmitz Cargobull 9t semi-trailer applications since March 2023.

The combination of SyT7 brakes and sealed NG4 EVO PRO brake cylinders with high force is the perfect synergy for optimal braking efficiency and increased overall safety of the vehicle.

NG4 EVO PRO is a new innovative and crimped design, as already introduced for Brake Chambers (OBC) and other Spring Brake Actuator families e.g., NG3 EVO, NG5 and NG4 EVO. It firmly and effectively seals the internal components from external contaminants, such as dust, dirt, and moisture, providing the optimal protection and resulting in enhanced reliability and durability.

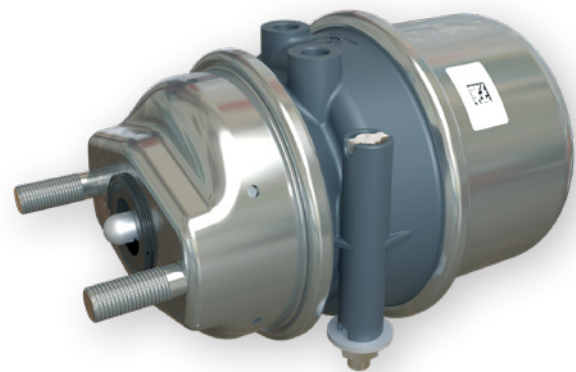
Featuring a robust and proven self-centring diaphragm, a "no touch" power spring and breathing valve, all acting alongside internal parts designed to mitigate the adverse effects of temperature variations, combine to give continuous and reliable operation. The enhanced corrosion resistance on the outside, protects against the harsh environments reducing maintenance requirements and ensures the longevity of the actuators.

NG4 EVO PRO is engineered to deliver high-force capabilities. With increased power output, these actuators can exert substantial force, enabling them to handle more demanding tasks and applications.

These unique features and benefits bring Knorr-Bremse NG4 EVO PRO Actuators to a whole new level of quality and performance.

#### At a glance:

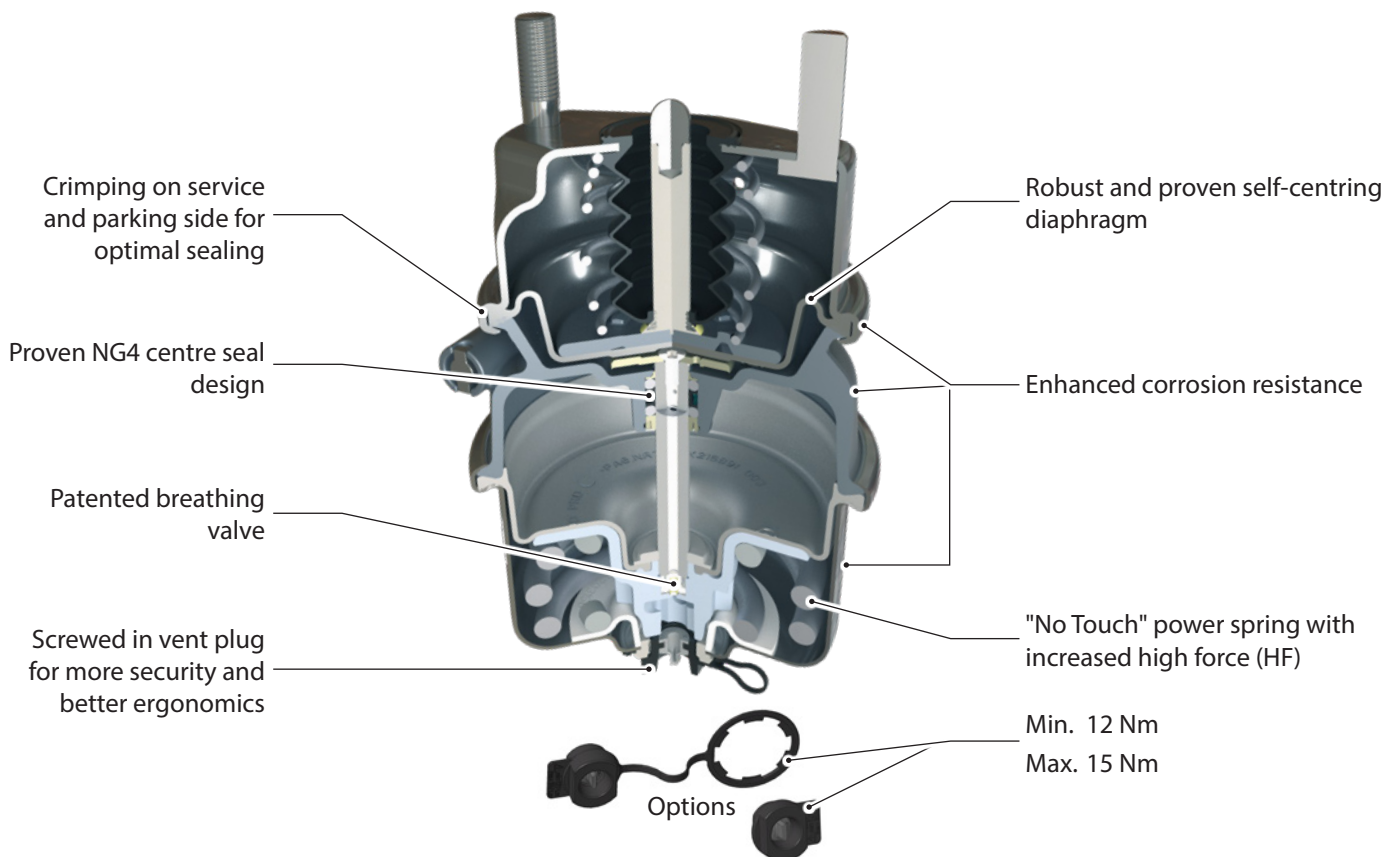
- › High force parking brake system (approx. +10% to standard product range)
- › Enhanced corrosion resistance
- › Robust and proven self-centring diaphragm
- › Featuring internal breathing valve
- › Screwed in vent plug for more security and better ergonomics
- › Reduced maintenance requirements and increased lifespan



**Note:** NG4 EVO PRO Actuators are neither backwards compatible nor interchangeable with NG4, NG4+ or NG4 EVO product types.

## Overview of NG4 EVO PRO Spring Brake Actuators

IAM Part Number	Type Number	Description	Trailer Manufacturer	OE Cross References*	Knorr-Bremse OE(S) Reference
K222034N00	BP7309	NG4 EVO PRO Spring Brakes (Disc) Type 16/24	Schmitz	1489605	K222034N14
K222035N00	BP7402	NG4 EVO PRO Spring Brakes (Disc) Type 20/24	Schmitz	1508539	K222035N14



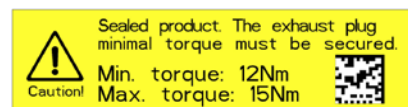
### Important service hint



**Caution!**  
**Sealed product**

To achieve proper functionality, follow exhaust plug torque requirements of **Min. 12Nm to Max. 15Nm**.

**Note:** OEM Products delivered before **02/2024** were supplied with a different plug and torque requirement of **Min. 10Nm to Max. 12Nm**. Please check engraving on plug cap.

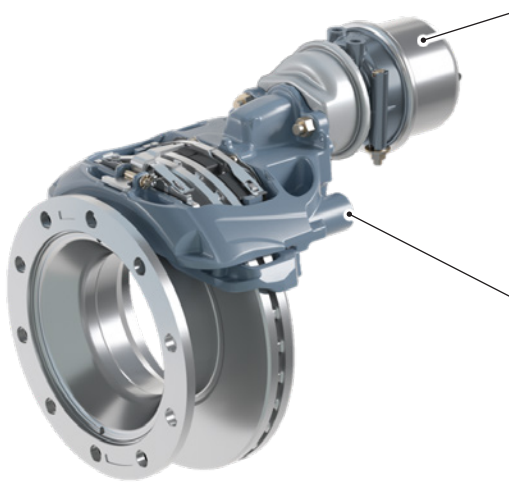


### More information about Knorr-Bremse actuators

More information about Knorr-Bremse actuators, related products, links to download documentation and the Knorr-Bremse Webshop, can be found here via the QR code:



**Weight-reduced wheel end - optimized for 9t semi-trailer axle applications**



**NG4 EVO PRO Actuator**

- High-force
- Sealed
- Increased lifetime

**SyT7 Pneumatic Disc Brake**

- Single-piston design
- 20kNm brake torque
- Weight < 29 kg

**Related Documents**

Y427117	Product Data Sheet
Y467029	Service Manual
Y465781	Test Report

**Related Documents**

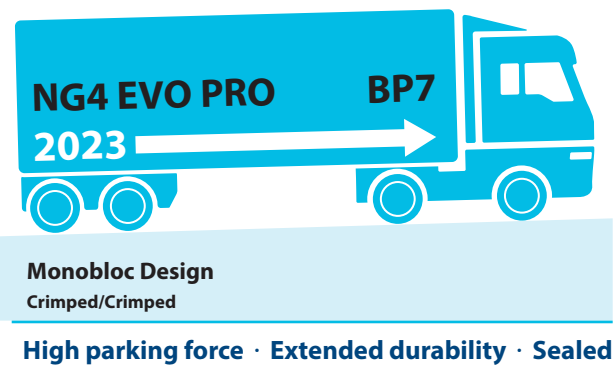
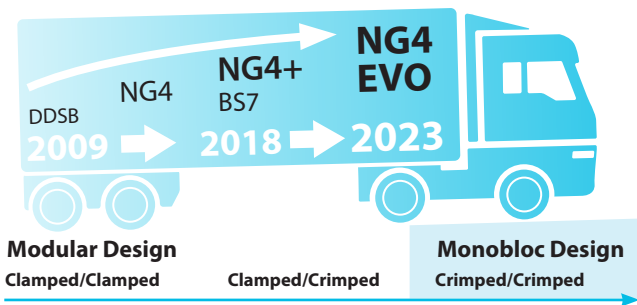
Y514892	Up2Date
Y418754	Service Manual

**Spring Brake Actuator NG4 EVO PRO**

A whole new chapter in safety, reliability and performance means the NG4 EVO PRO Actuators are neither backwards compatible nor interchangeable with NG4, NG4+ or NG4 EVO product types.

For today's trailer Spring Brake Actuator (Disc) population

New arrival for trailers: Knorr-Bremse NG4 EVO PRO



## KEEP IT RUNNING

### Knorr-Bremse Systems for Commercial Vehicles

Moosacher Strasse 80 | 80809 Munich | Germany

Tel: +49 89 3547-0

[mytruckservices.knorr-bremse.com](http://mytruckservices.knorr-bremse.com)



**Disclaimer:** The information contained in this document is intended for the exclusive use of trained persons within the commercial vehicle industry, and must not be passed on to any third party.

All recommendations regarding products and their servicing or usage are with reference to Knorr-Bremse products and should not be considered applicable to products from other manufacturers.

This information does not purport to be all-inclusive and no responsibility is assumed as a result of its use. We cannot accept any liability nor offer any guarantee regarding data accuracy, completeness or timeliness. The information does not represent any guarantee or ensured characteristics of the Products or Systems described.

No liability can be accepted based on the information, its use, recommendations or advice provided. In no event may we be held liable for any damage or loss except in the case of wilful intent or gross negligence on our part, or if any mandatory legal provisions apply.

The information contained herein is subject to alteration without notice and therefore may not be the latest release. Please check our website [mytruckservices.knorr-bremse.com](http://mytruckservices.knorr-bremse.com) for the latest update or contact your local Knorr-Bremse representative. The figurative mark "K" and the trademarks KNORR and KNORR-BREMSE are registered in the name of Knorr-Bremse AG. Additional terms and conditions apply; please refer to our website [truckservices.knorr-bremse.com](http://truckservices.knorr-bremse.com) for full Disclaimer.

Any legal disputes arising from the use of this information shall be subject to German law.

**Note:** If service work is carried out on a vehicle based on information provided herein, it is the responsibility of the workshop to ensure the vehicle is fully tested and in full functional order before the vehicle is returned into service. Knorr-Bremse accepts no liability for problems caused as a result of appropriate tests not being carried out.

This disclaimer is a translation of a German text, which should be referred to for all legal purposes.

Copyright © Knorr-Bremse AG - all rights reserved, including industrial property rights applications. Knorr-Bremse AG retains any power of disposal, such as for copying and transferring.