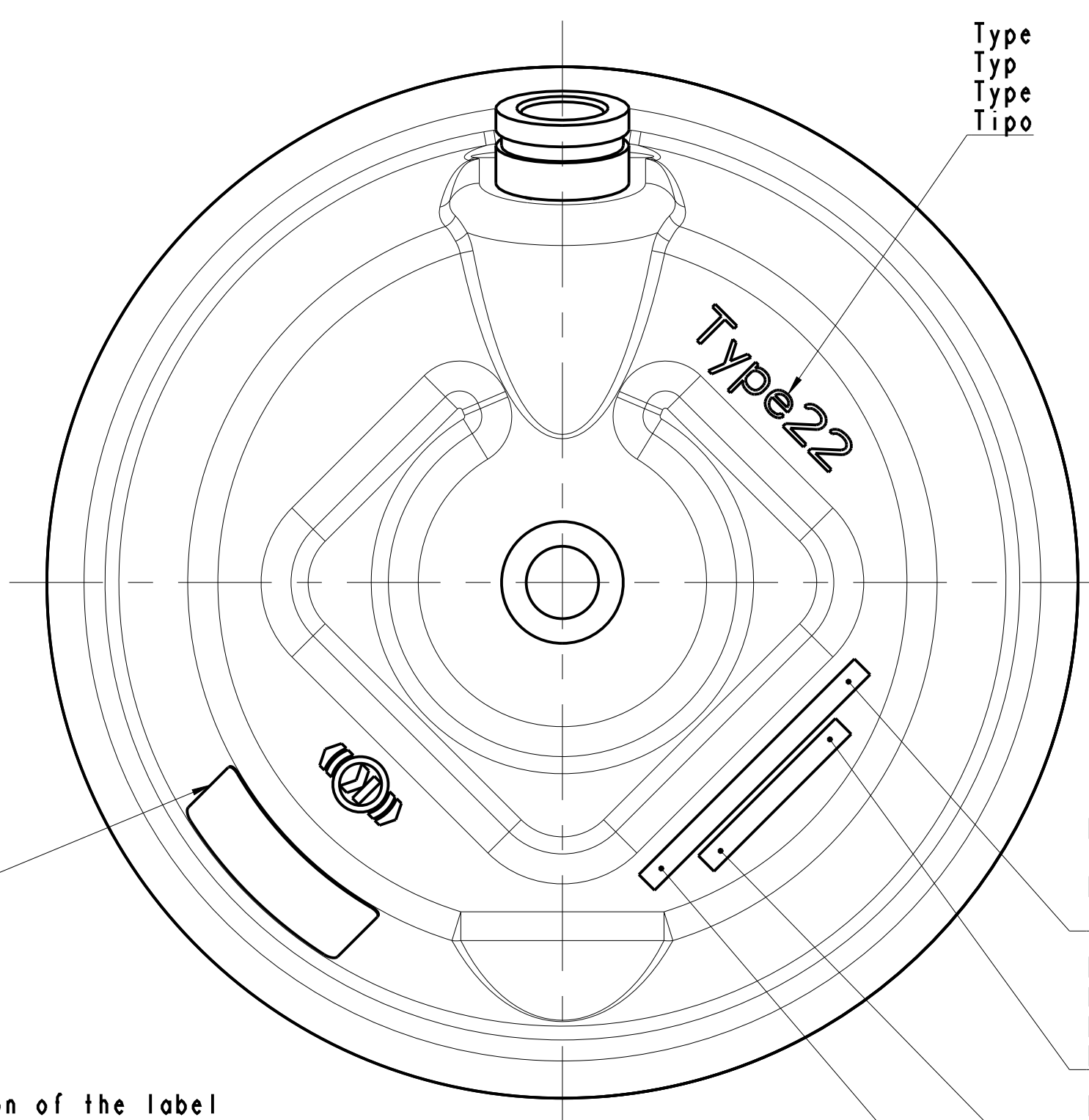


Tolerances/Toleranzen/Tolleranze					
Nominal dimensions in mm					
Nominale Abmaße in mm					
Dimensioni nominali in mm					
<6	>6	>30	>80	>120	>315
±1	±1.5	±2	±2.5	±3	±4

- General presentation, exact orientation of the components, see below.  
 - Allgemeine Darstellung, fuer genaue Teilorientierung, siehe Ansicht unten.  
 - Présentation générale, orientation exacte des pièces, voir vue en bas.  
 - Presentazione generale. Per l'orientazione corretta dei pezzi, vedere il disegno sotto.



Type  
Typ  
Tipo

Reference number  
Typen-Nr.  
Reference appareil  
Tipo

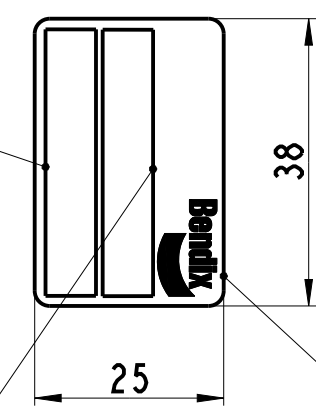
Fabrication date  
Herstellungsdatum  
Date de fabrication  
Data di produzione

Fabrication plant  
Fertigungsart-Nr.  
Site de fabrication  
Stabilimento di montaggio

Part list number  
Sachnummer  
No nomenclature  
Codice

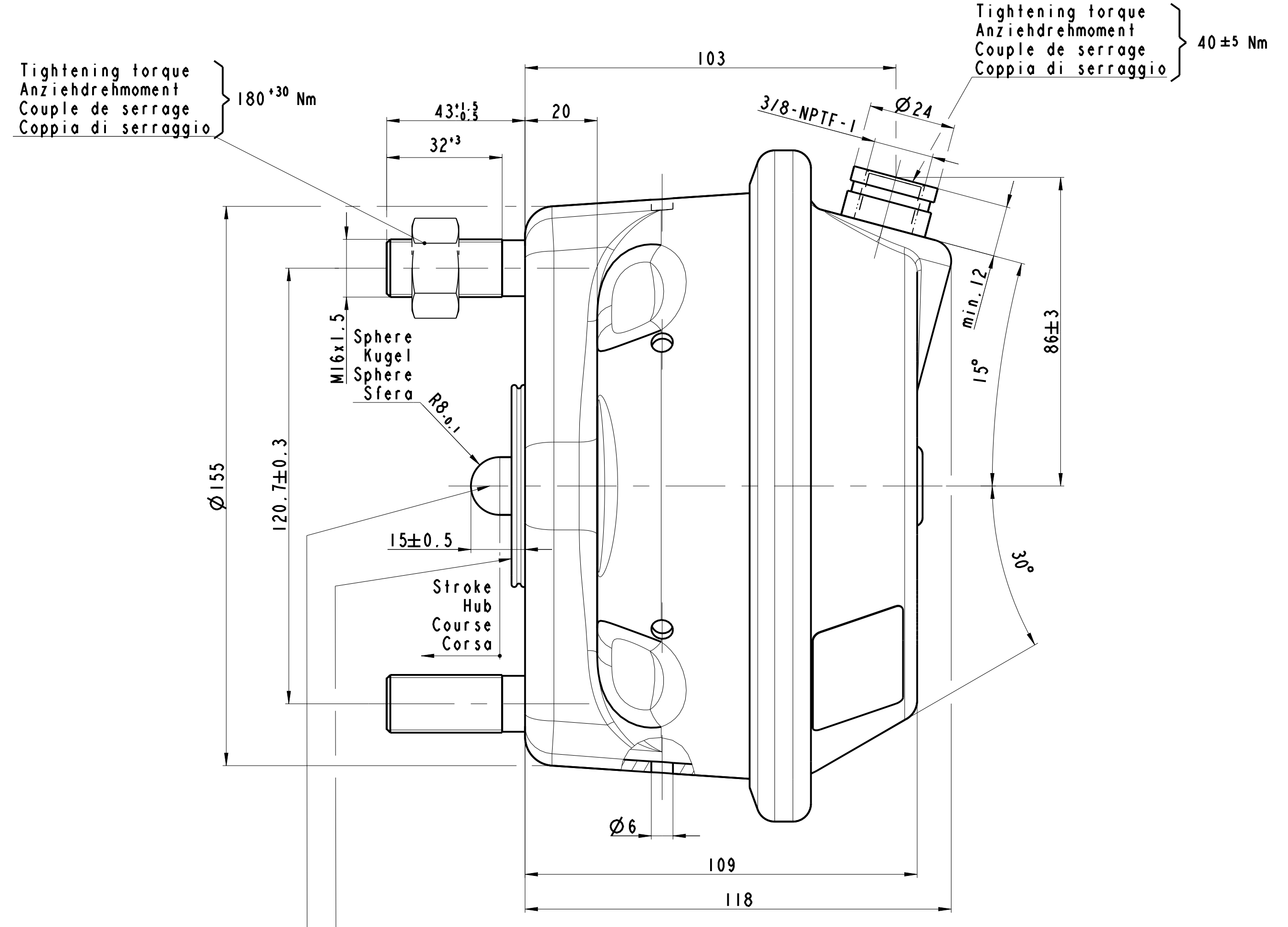
Position of the label  
Position der Etikette  
Position de l'étiquette  
Posizione dell'etichetta

Fabrication plant, fabrication date, serial number  
Fertigungsart-Nr., Herstellungsdatum, Seriennummer  
Site de fabrication, date de fabrication, numéro de série  
Stabilimento di montaggio, data di produzione, numero di serie



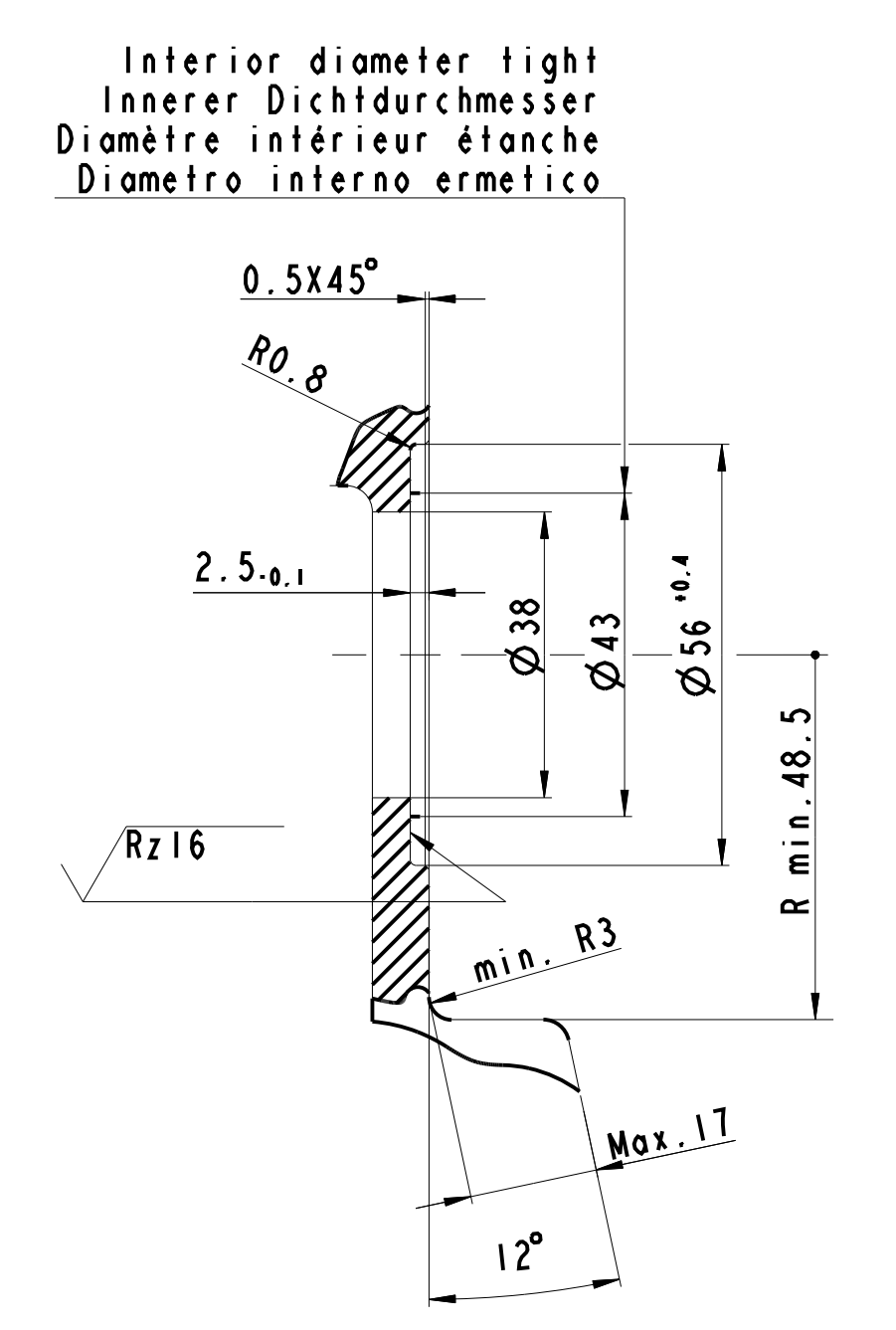
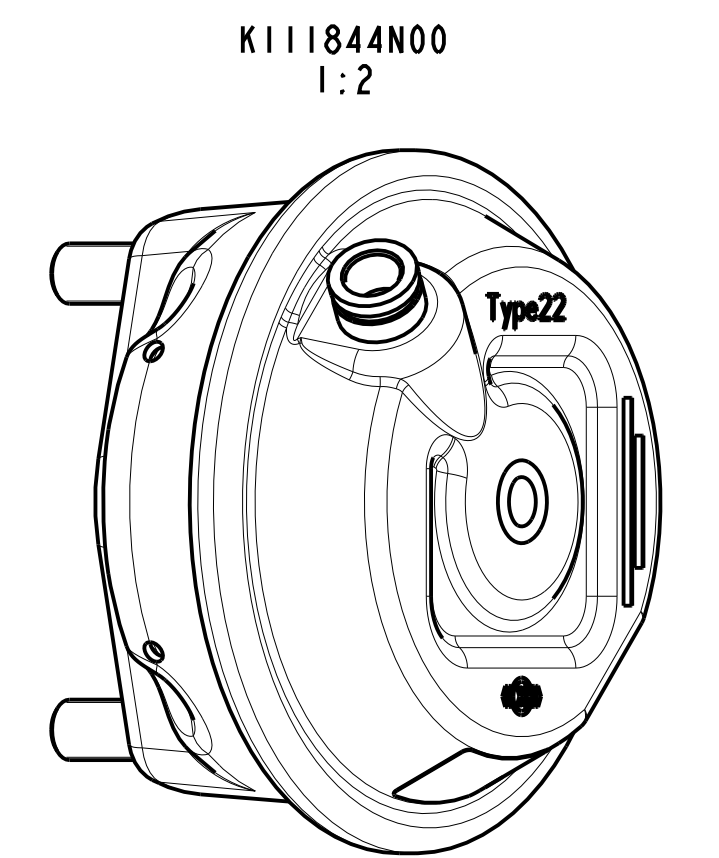
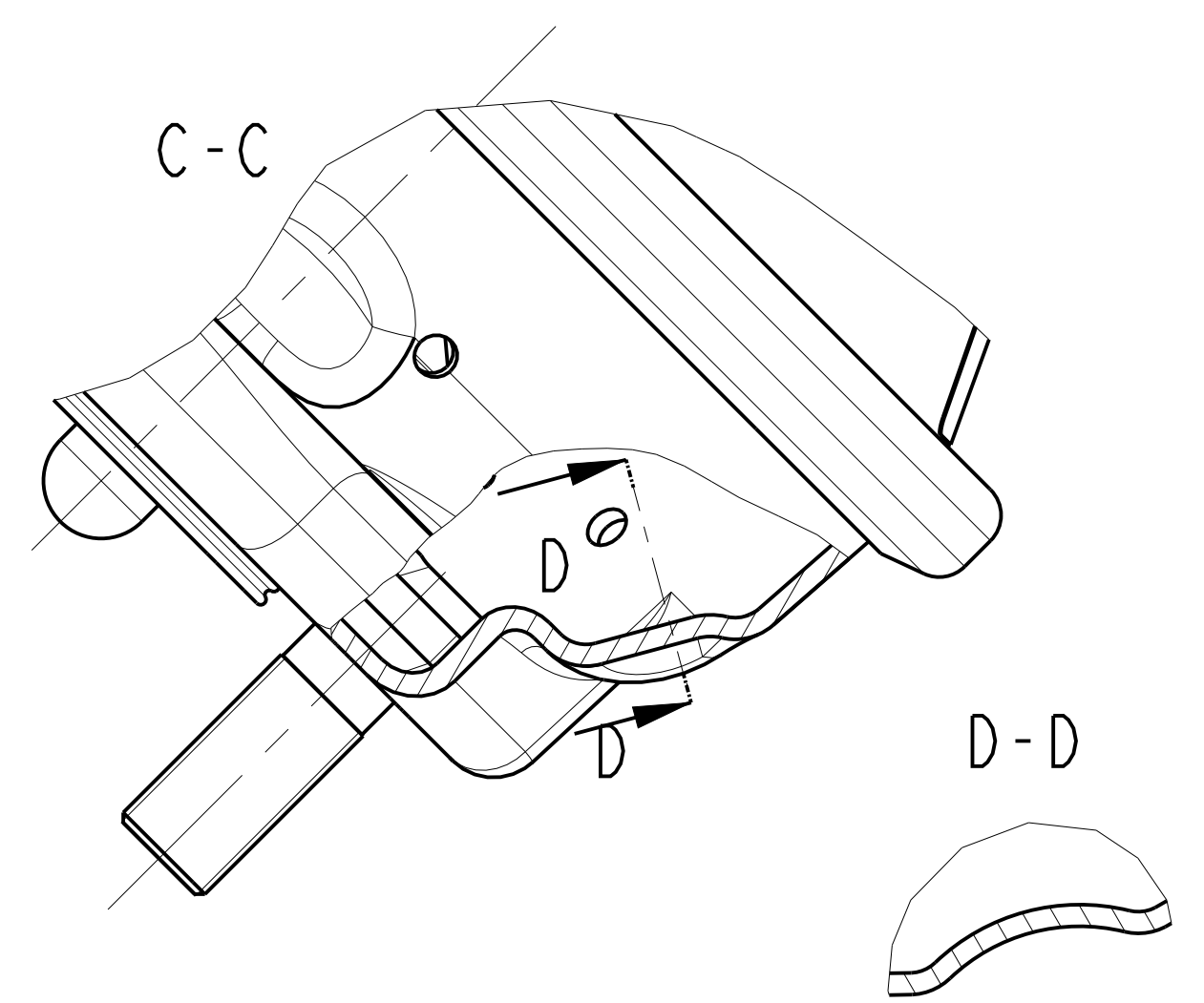
Label Z018735 with Bar Code 39 according to ISO/IEC 16388  
 Etikette Z018735 mit Stangencode 39 nach ISO/IEC 16388  
 Etiquette K018735 avec code barres 39 suivant ISO/IEC 16388  
 Etichetta K018735 con codice sbarra 39 secondo ISO/IEC 16388

Part list number  
Sachnummer  
No nomenclature  
Codice



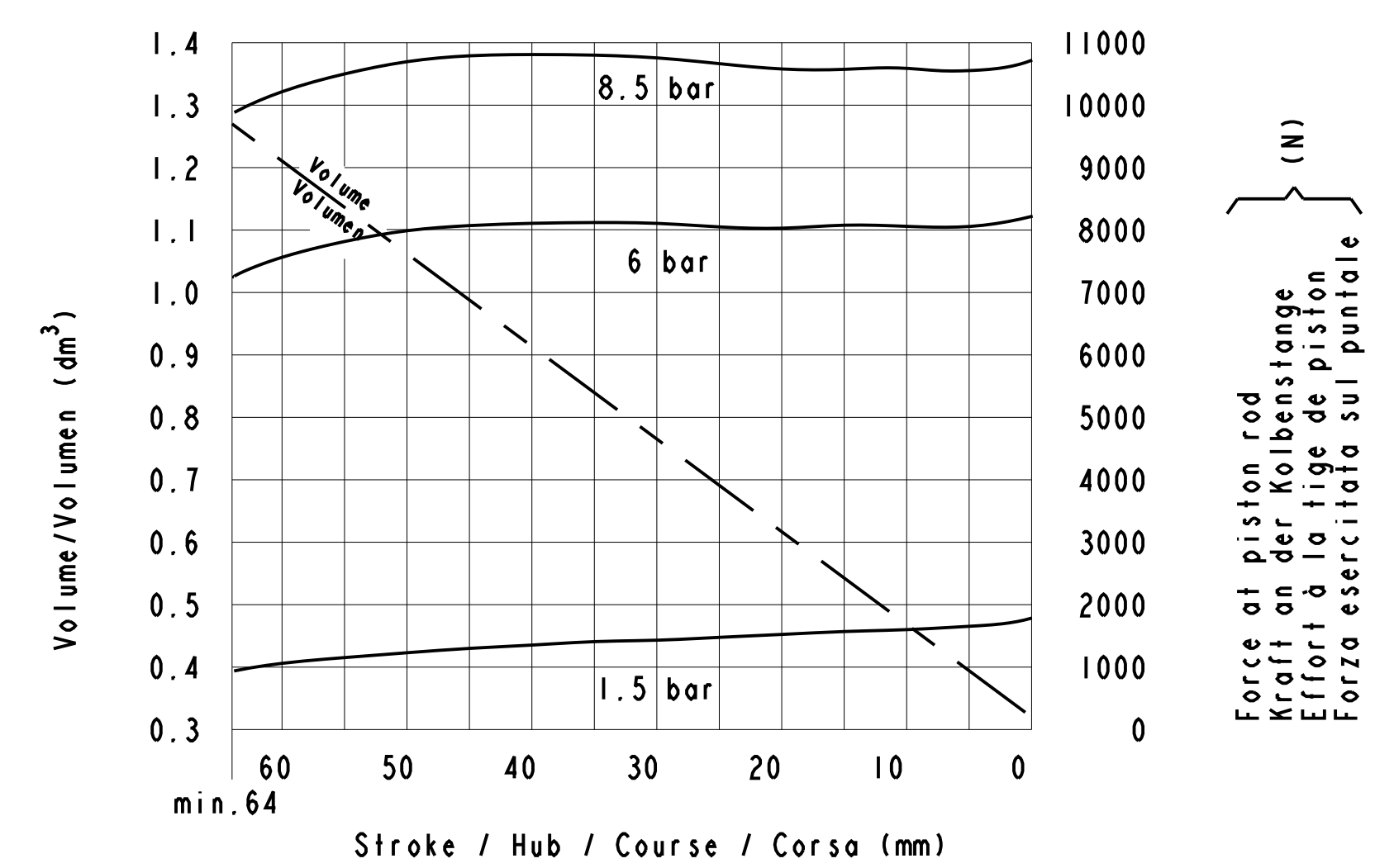
Sealing: pressure tight against secondary chamber  
 Abdichtung: druckdicht zum Sekundarraum  
 Etanchéité: étanche à la chambre secondaire  
 Ermeticità: ermetica alla camera secondaria } 0.4 bar

Max. pivoting angle of piston rod in all directions  
 Schwenkbereich der Kolbenstange allseitig max.  
 Angle de pivotement max. de la tige de piston de tous cotés  
 Angolo di rotazione mass. dell'asta pistone in tutti i direzioni: } 4°



Force of return spring at stroke 0 mm  
 Kraftabgabe der Ruckholfeder bei Hub 0 mm  
 Force du ressort de rappel à une course de 0 mm  
 Forza della molla di ritorno ad una corsa di 0 mm } F = 220±20 N

Diagram of service brake  
 Diagramm der Betriebsbremse  
 Diagramme du frein de service  
 Diagramma del freno di servizio } Type 22



Graphic symbol  
Schaltzeichen  
Symbole graphique  
Simbolo grafico } DIN ISO 1219

Temperature range  
Therm. Anwendungsbereich  
Plage de température  
Campo termico } -40°C bis +80°C

Max. operating pressure  
Max. Betriebsdruck  
Pression de service max.  
Pressione di esercizio max. } 10.2 bar

Permissible leakage  
Zulaessige Undichtheit  
Fuite admissible  
Perdita d'aria ammissibile } V<sub>n</sub> = 23 cm³/min

Maximum pressure  
Hochst-Druck  
Pression maximale  
Pressione massima } 13 bar

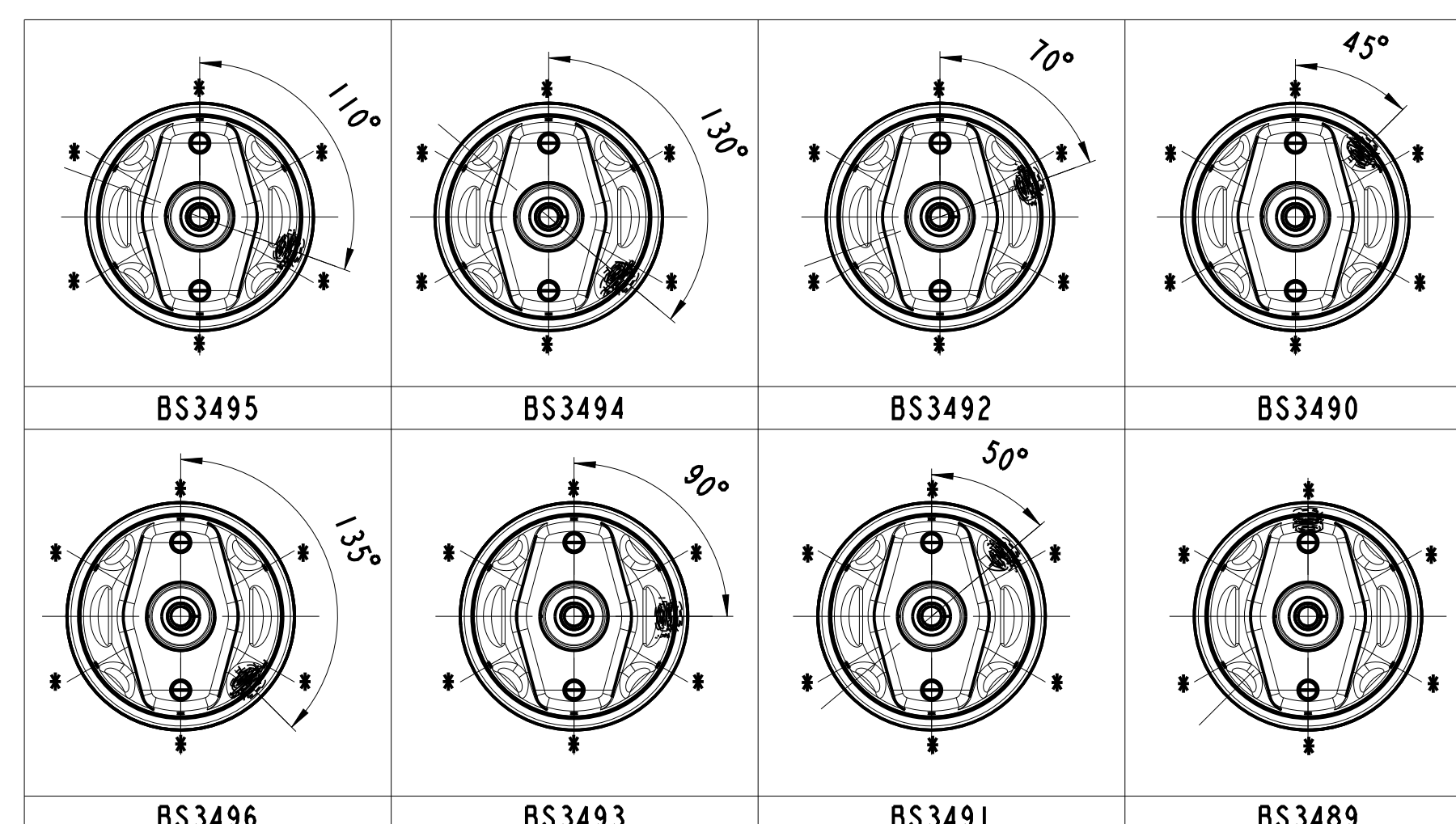
Medium: Air  
Medium: Luft  
Fluide: Air  
Fluido: Aria

- Exhaust hole must be directed downwards when mounted
- Entlüftung muss im eingebauten Zustand nach unten zeigen
- L'orifice d'échappement doit être dirigé vers le bas en état monté
- Installato il foro di scorio dovrà essere rivolto verso il basso

- Breather holes opened
- AImungsbohrungen geoeffnet
- Troux de respiration ouverts
- Fori di respirazione aperti } Ø6

Warning / Nachricht / Avertissement / Avvertimento

This brake actuator can only be used on applications for which it has been formally validated by Knorr-Bremse  
 Dieser Bremszylinder darf nur für Applikationen angewendet werden, für die er von Knorr-Bremse freigegeben worden ist  
 Cet actionneur de frein ne doit être utilisé que sur les applications pour lesquelles il a été formellement homologué par Knorr-Bremse  
 Questo cilindro a molla deve essere utilizzato solo per applicazioni benestriate formalmente dalla Knorr-Bremse



BS3496 - K111850N00	3.6 kg
BS3495 - K111849N00	3.6 kg
BS3494 - K111848N00	3.6 kg
BS3493 - K111847N00	3.6 kg
BS3492 - K111846N00	3.6 kg
BS3491 - K111845N00	3.6 kg
BS3490 - K111844N00	3.6 kg
BS3489 - K111843N00	3.6 kg

KB-ref. number  
KB-Bestell-Nr  
KB-No. de ref.  
Codice KB

Weight  
Gewicht  
Masse  
Massa

100: 0902608 - 01 release  
 Rev.: Revision Reference  
 Date: 02/07/2016  
 Drawn: 02/07/2016  
 Checked: 02/07/2016  
 Drawn: 02/07/2016  
 Checked: 02/07/2016  
 Drawn: 02/07/2016  
 Checked: 02/07/2016

ISO 129-30  
 Surface Treatment: Length Unit: mm Scale: 1:1  
 Weight: See table kg

Material: 2072720  
 Part Name: Brake Chamber (Disc)

Doc. Type: 000  
 Sheet: 1 of 1

Type 22