



# Installation Instructions

## TRAILER SYSTEM-GUARD® AIR DRYER

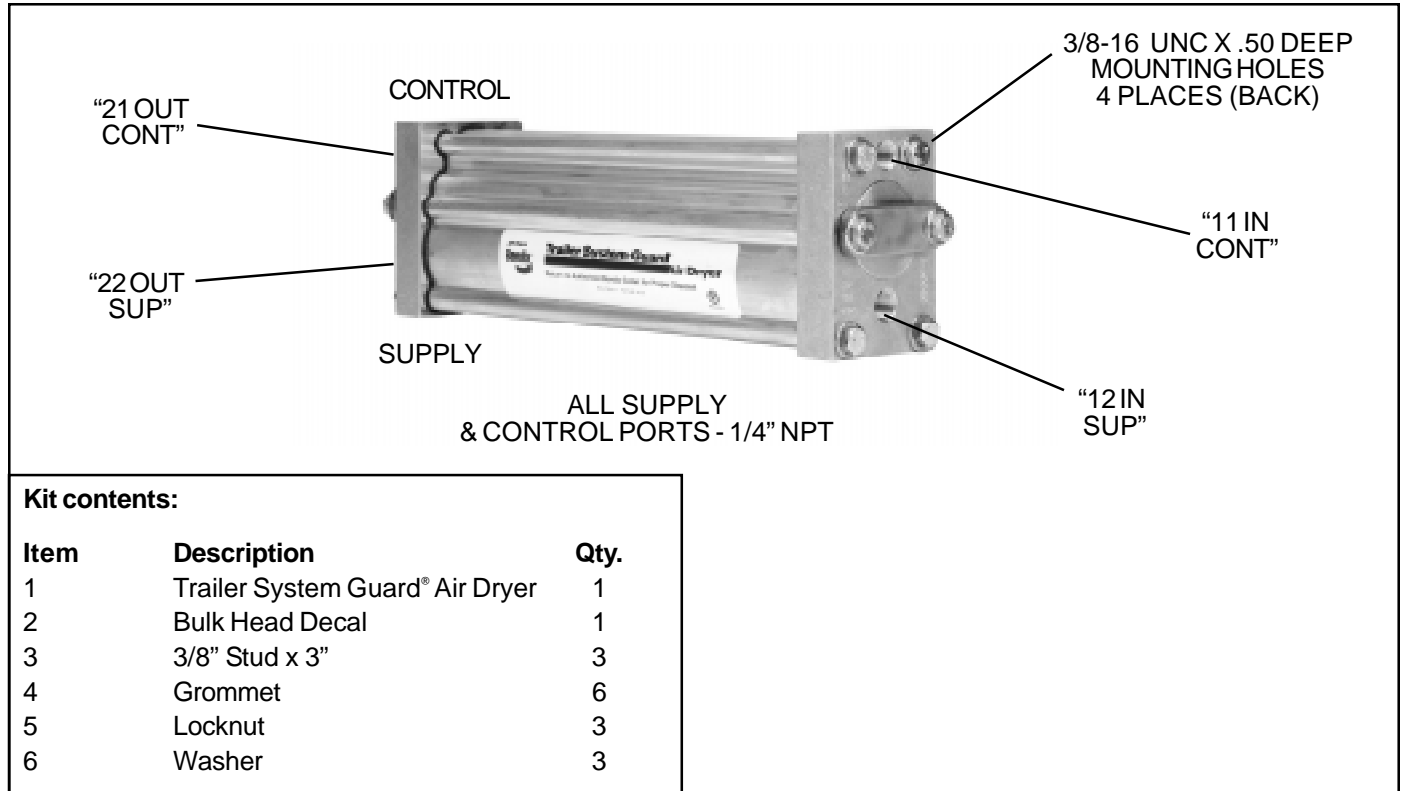


FIGURE 1 - TRAILER SYSTEM-GUARD® AIR DRYER

### **IMPORTANT! PLEASE READ AND FOLLOW THESE INSTRUCTIONS TO AVOID PERSONAL INJURY OR DEATH:**

When working on or around a vehicle, the following general precautions should be observed at all times.

1. Park the vehicle on a level surface, apply the parking brakes, and always block the wheels.
2. Stop the engine when working around the vehicle.
3. If the vehicle is equipped with air brakes, make certain to drain the air pressure from all reservoirs before beginning ANY work on the vehicle.
4. Following the vehicle manufacturer's recommended procedures, deactivate the electrical system in manner that removes all electrical power from the vehicle.
5. When working in the engine compartment the engine should be shut off. Where circumstances require that the engine be in operation, **EXTREME CAUTION** should be used to prevent personal injury resulting from contact with moving, rotating, leaking, heated, or electrically charged components.
6. Never connect or disconnect a hose or line containing pressure; it may whip. Never remove a component or plug unless you are certain all system pressure has been depleted.
7. Never exceed recommended pressures and always wear safety glasses.
8. Do not attempt to install, remove, disassemble or assemble a component until you have read and thoroughly understand the recommended procedures. Use only the proper tools and observe all precautions pertaining to use of those tools.
9. Use only genuine Bendix replacement parts, components, and kits. Replacement hardware, tubing, hose, fittings, etc. should be of equivalent size, type, and strength as original equipment and be designed specifically for such applications and systems.
10. Components with stripped threads or damaged parts should be replaced rather than repaired. Repairs requiring machining or welding should not be attempted unless specifically approved and stated by the vehicle or component manufacturer.

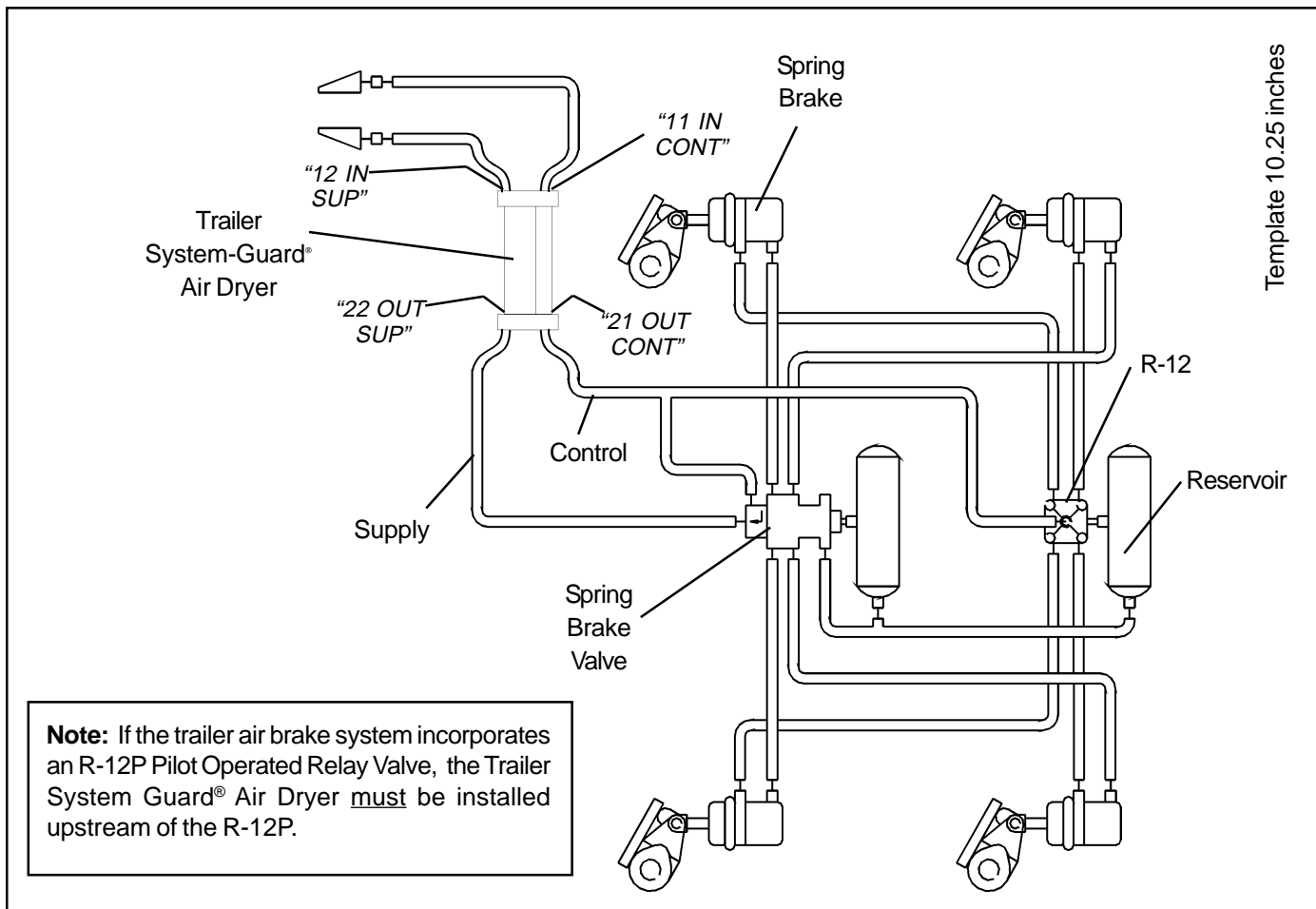


FIGURE 2 - TRAILER SYSTEM-GUARD® AIR DRYER SYSTEM SCHEMATIC

**11. Prior to returning the vehicle to service, make certain all components and systems are restored to their proper operating condition.**

**Note:** The Trailer System-Guard® air dryer is intended to remove moisture and other contaminants normally found in the air brake system. Using alcohol, anti-freeze, oil or other de-icing substances in the brake system can damage the air dryer and will therefore void the Trailer System-Guard® Air Dryer warranty.

**KIT DESCRIPTION**

This kit is intended for installing the Bendix Trailer System-Guard® Air Dryer.

**VEHICLE PREPARATION**

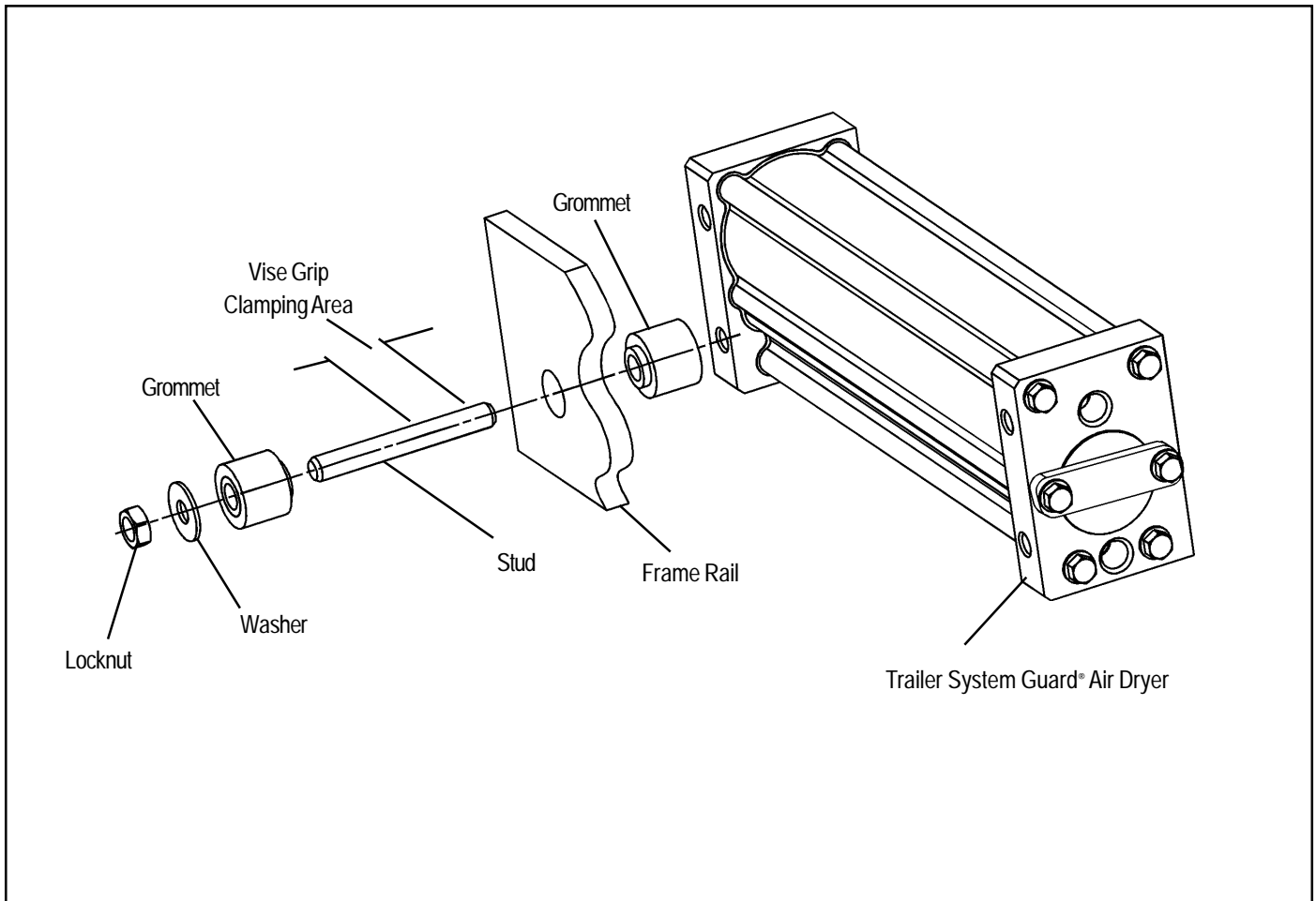
1. Park the vehicle on a level surface and prevent movement by means other than the brakes.
2. Drain all reservoirs to 0 p.s.i.

**LOCATING THE TRAILER SYSTEM-GUARD® AIR DRYER ON THE VEHICLE**

The Trailer System-Guard® Air Dryer can be mounted vertically or horizontally on the trailer frame rail, cross member or floor. If mounted vertically the inlet ports must be pointed upward.

**MOUNTING THE TRAILER SYSTEM-GUARD® AIR DRYER**

1. After positioning the Trailer System-Guard® according to the location requirements, mark the position of the predrilled mounting holes on the selected location. A template for the mounting pattern is included on this page. **Note: Only three of the four mounting holes must be used for securing the air dryer to the frame rail.** Securing the air dryer at all four mounting holes can lead to damage and eventual failure of the air dryer. Any three of the four mounting holes can be used for installation. Selection is at the discretion of the installer. If mounting the dryer on a trailer cross member center the template to maximize clearance and facilitate installation. **Note:** Check the vehicle manual before drilling the selected location.
2. Drill the **three** marked mounting holes into the frame rail using a 5/8" diameter drill.
3. By hand, install the studs into the three corresponding holes on the air dryer. To tighten attach vise grips to the studs within one(1) inch of the air dryer and turn 1/4 to 1/2 turns. Thread damage on the stud in the area near the air dryer is acceptable. Care should be taken to prevent damage to the last 1-1/2 inches of the stud at the end opposite the air dryer end cover.



**FIGURE 3 - TRAILER SYSTEM-GUARD® AIR DRYER INSTALLATION**

4. Place a rubber grommet with the flat side toward the air dryer over each of the installed studs.
5. Align and insert the air dryer mounting studs with grommets into the 3 mounting holes on the vehicle frame rail. The raised portion or shoulder of the grommets must fit into the mounting holes drilled into the frame rail.
6. Install the remaining grommets on each of the mounting studs with the raised portion or shoulder toward the frame rail. Ensure the shoulder fits into the frame rail mounting hole.
7. Using the flat washer and locknut secure the air dryer. Tighten the locknuts using a 9/16" wrench turn until the locknut, washer and outside grommet just make contact (no actual compression of the rubber grommet) then turn two(2) more turns.

#### **CONNECTING THE AIR HOSES**

Follow Figure 2 for air hose arrangement.

1. The Trailer System-Guard® supply and control line fittings are 1/4"-18 NPT. Cut the supply and control lines and install 1/4 inch fittings.
2. Connect the supply and control lines to the Trailer System-Guard® making sure to keep the control and supply circuits separate as shown. Do not switch lines end to end. All ports are identified as indicated in figures 1 and 2.
3. Affix the Alcohol Warning Decal to the trailer bulkhead. Before applying the decal remove all oil and road contaminants from the mounting location with a good cleaning solvent.

#### **OPERATIONAL TEST**

Build the air system to governor cutout. Shut off the engine. Using a soap solution, check all lines and fittings leading to and from the Trailer System-Guard® for leakage and integrity. Repair any excessive leaks - exceeding a 1 inch bubble in 5 seconds - before restoring vehicle to service.

*Template Included - Do Not Reduce This Document*