



Installation Instructions

AIR DRYER SILENCER KIT

Bendix® AD-IS® air dryer silencer kit piece no. **K022309** consists of the following components:

Bendix® AD-IS® Air Dryer Silencer Kit K022309 Contents		
Item	Description	Qty
1	Exhaust Cover	1
2	Silencer Body	1
3	Filter	1
4	Silencer Cover	1
5	Screws	4

Bendix® AD-9® air dryer silencer kit piece no. **K022432** consists of the following components:

Bendix® AD-9® Air Dryer Silencer Kit K022432 Contents		
Item	Description	Qty
1	Exhaust Cover	1
2	Silencer Body	1
3	Filter	1
4	Silencer Cover	1
5	Screws	4
6	Gasket	1
7	Screws	3
8	Adapter	1

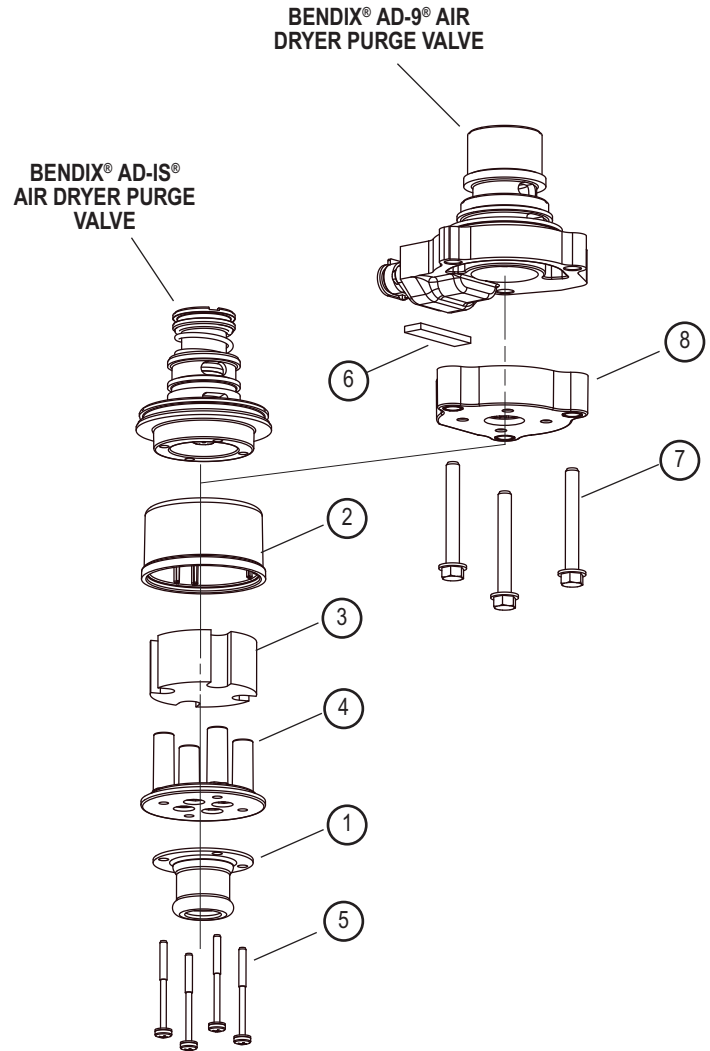


FIGURE 1 - EXPLODED VIEWS AND SILENCER KITS

GENERAL SAFETY GUIDELINES

WARNING!

PLEASE READ AND FOLLOW THESE INSTRUCTIONS TO AVOID PERSONAL INJURY OR DEATH:

When working on or around a vehicle, the following general precautions should be observed at all times.

1. Park the vehicle on a level surface, apply the parking brakes, and always block the wheels. Always wear safety glasses.
2. Stop the engine and remove ignition key when working under or around the vehicle. When working in the engine compartment, the engine should be shut off and the ignition key should be removed. Where circumstances require that the engine be in operation, **EXTREME CAUTION** should be used to prevent personal injury resulting from contact with moving, rotating, leaking, heated or electrically charged components.
3. Do not attempt to install, remove, disassemble or assemble a component until you have read and thoroughly understand the recommended procedures. Use only the proper tools and observe all precautions pertaining to use of those tools.
4. If the work is being performed on the vehicle's air brake system, or any auxiliary pressurized air systems, make certain to drain the air pressure from all reservoirs before beginning **ANY** work

5. on the vehicle. If the vehicle is equipped with a Bendix® AD-IS® air dryer system or a dryer reservoir module, be sure to drain the purge reservoir.
5. Following the vehicle manufacturer's recommended procedures, deactivate the electrical system in a manner that safely removes all electrical power from the vehicle.
6. Never exceed manufacturer's recommended pressures.
7. Never connect or disconnect a hose or line containing pressure; it may whip. Never remove a component or plug unless you are certain all system pressure has been depleted.
8. Use only genuine Bendix® brand replacement parts, components and kits. Replacement hardware, tubing, hose, fittings, etc. must be of equivalent size, type and strength as original equipment and be designed specifically for such applications and systems.
9. Components with stripped threads or damaged parts should be replaced rather than repaired. Do not attempt repairs requiring machining or welding unless specifically stated and approved by the vehicle and component manufacturer.
10. Prior to returning the vehicle to service, make certain all components and systems are restored to their proper operating condition.
11. For vehicles with Automatic Traction Control (ATC), the ATC function must be disabled (ATC indicator lamp should be ON) prior to performing any vehicle maintenance where one or more wheels on a drive axle are lifted off the ground and moving.

These kits are intended for use in installing a silencer at the purge valve of a Bendix® AD-IS® or AD-9® air dryer.

VEHICLE PREPARATION

1. Park the vehicle on a level surface and prevent movement by means other than the brakes.
2. Drain all reservoirs to 0 psi (0 kPa). For the AD-IS air dryer system, or a dryer reservoir module, be sure to drain the purge reservoir.
3. Clean the exterior of the air dryer.

DISASSEMBLY

General

When servicing the AD-9 air dryer, carefully remove the screws attaching the exhaust assembly. Note: The AD-IS does not require any disassembly.

ASSEMBLY - AD-IS AIR DRYER

1. Install the filter(3) into the silencer body(2), by aligning the notches on the filter to the body, slide the two pieces together.
2. Slide the silencer cover(4) into the silencer body and filter (2 & 3).
3. Attach the exhaust cover(1) to the silencer assembly, (2, 3 & 4) and the purge valve using the four screws(5) provided.

ASSEMBLY - AD-9 AIR DRYER

1. Peel the paper backing from the adhesive surface of the gasket(6). Carefully align and affix the gasket(6) to the channel in the adapter(8).
2. Install the filter(3) into the silencer body(2), by aligning the notches on the filter to the body then slide the two pieces together.
3. Slide the silencer cover(4) into the silencer body and filter (2 & 3).
4. Attach the exhaust cover(1) to the silencer assembly(2, 3 & 4) and the adapter(8) using the four screws(5) provided.
5. Using the three screws(7), install the adapter and silencer assembly to the air dryer purge valve. Torque the screws(7) to 85-125 in. lbs. Make sure the gasket(6) seals the adapter(8) to the purge valve.

OPERATIONAL TEST

Before restoring vehicle to service, bring the air brake system up to full operating pressure. Check that there is a full unobstructed discharge of air when the air dryer purges.

WARNING: To avoid personal injury, be sure that hands, or any body parts, are not near the silencer during this test.

WARNING: If not installed properly the silencer could blow off of the air dryer when the purge valve initially opens causing harm or injury.

