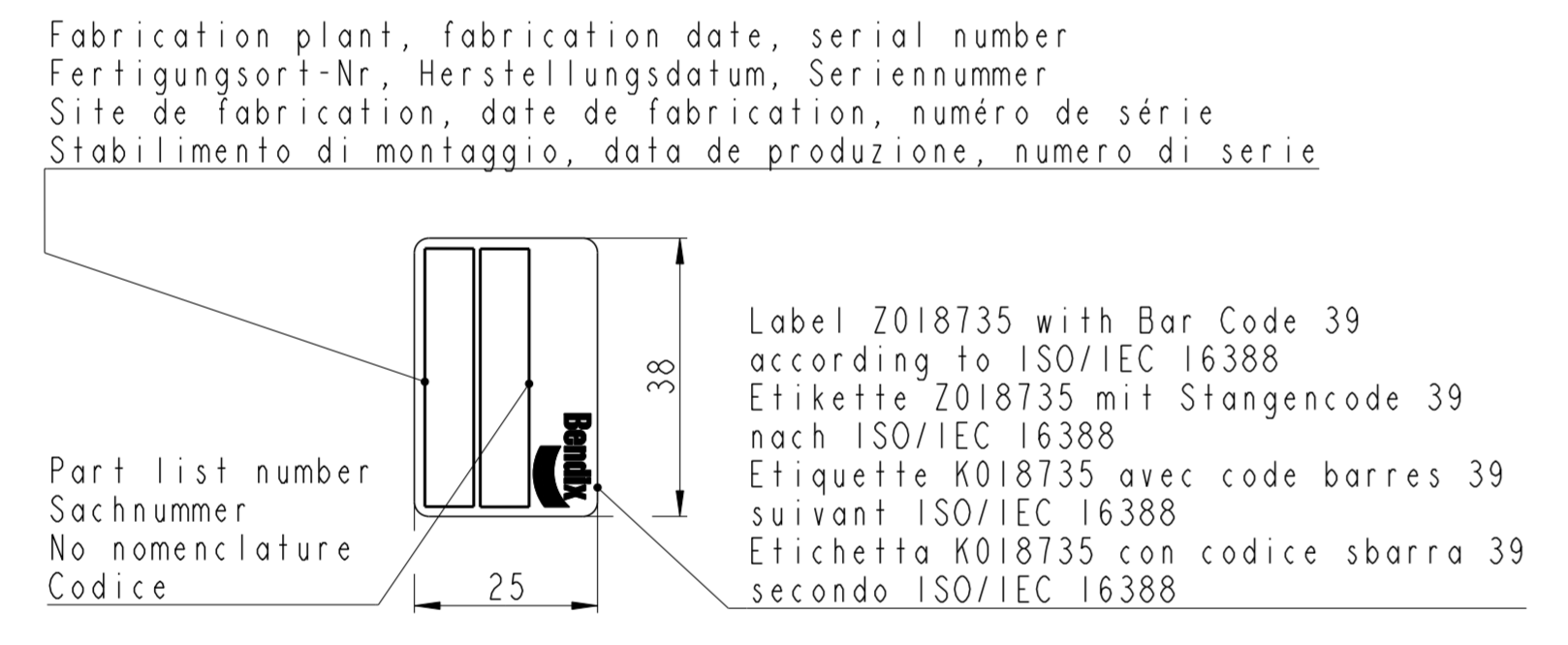
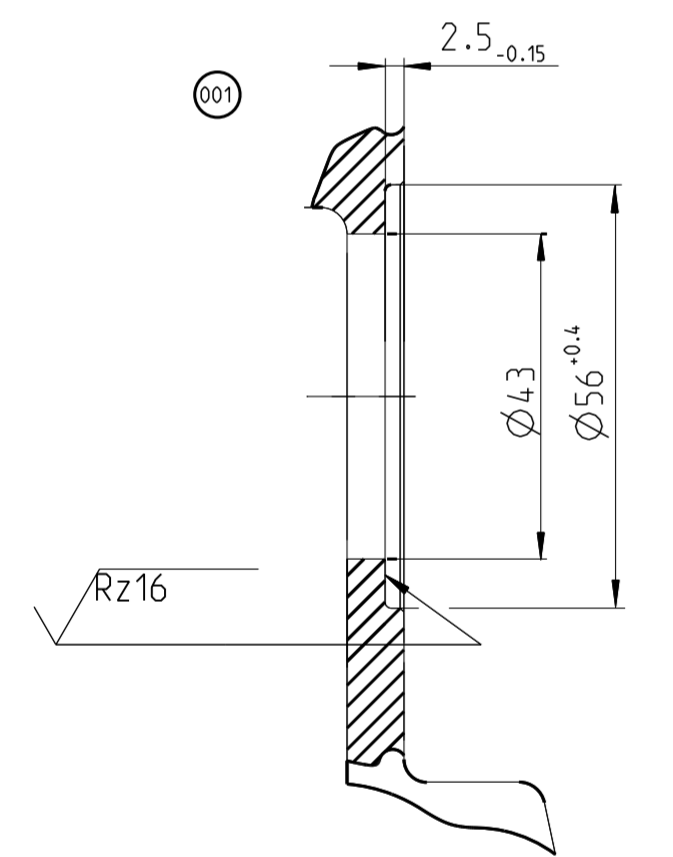
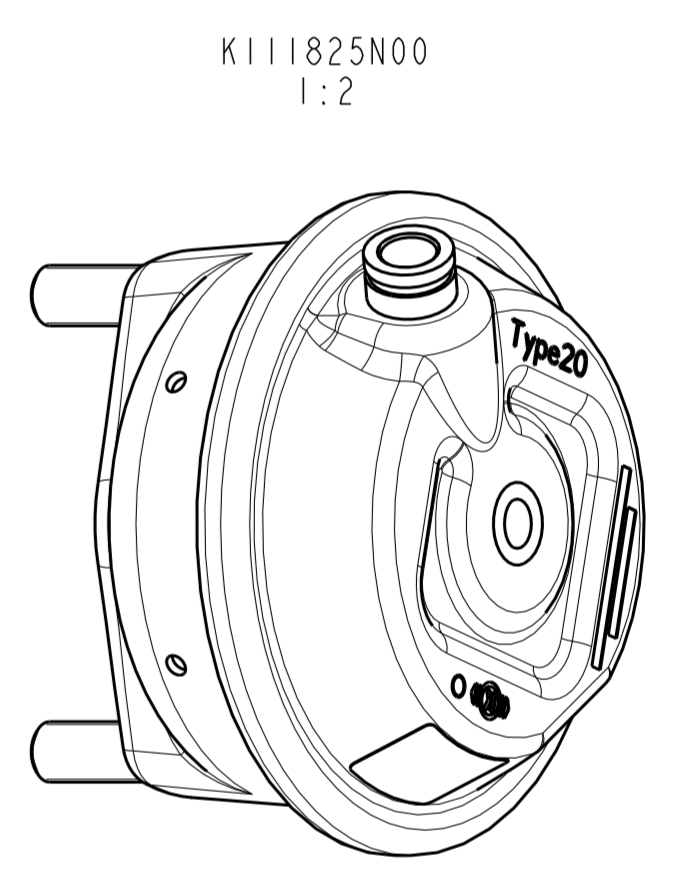
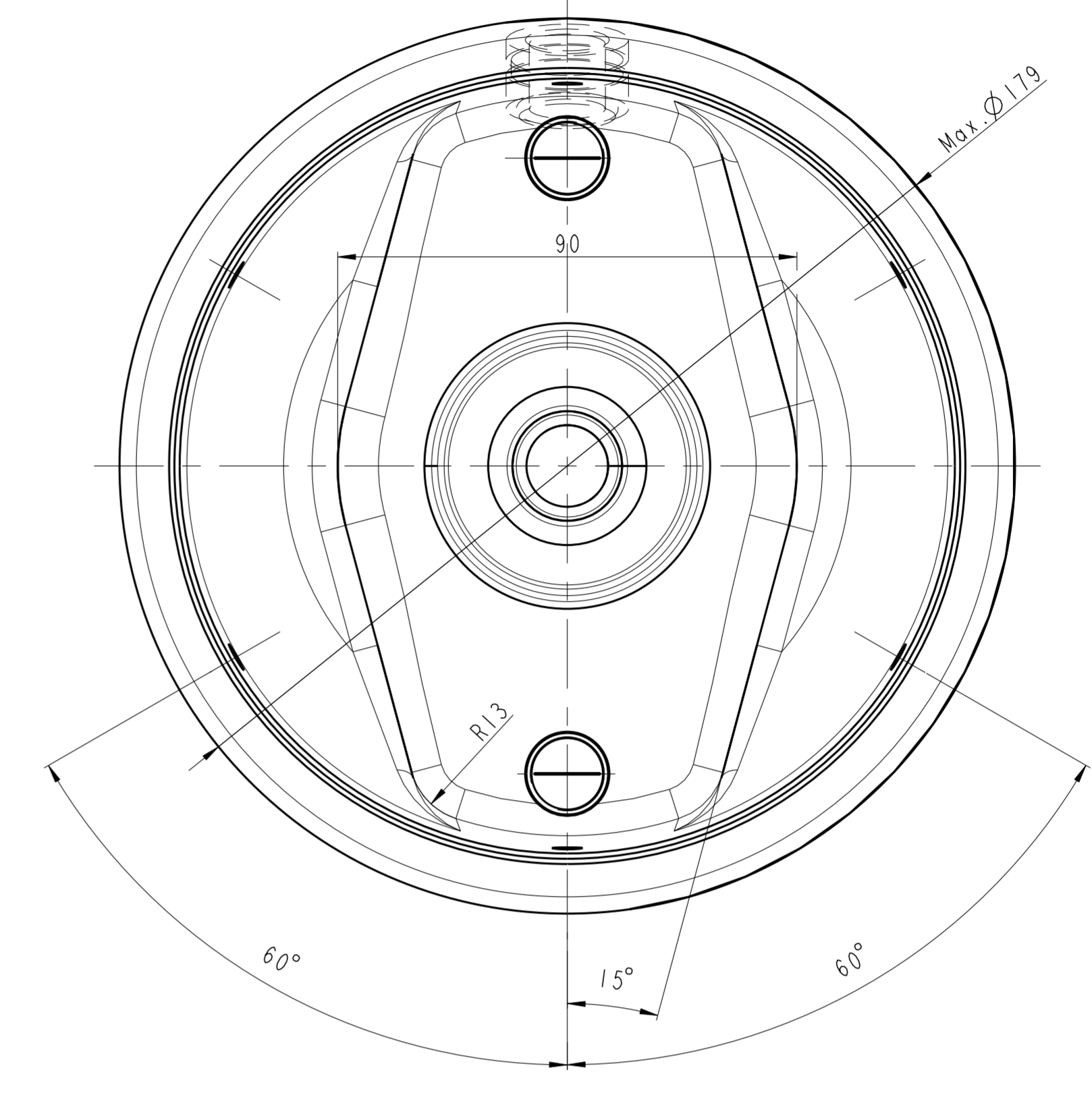
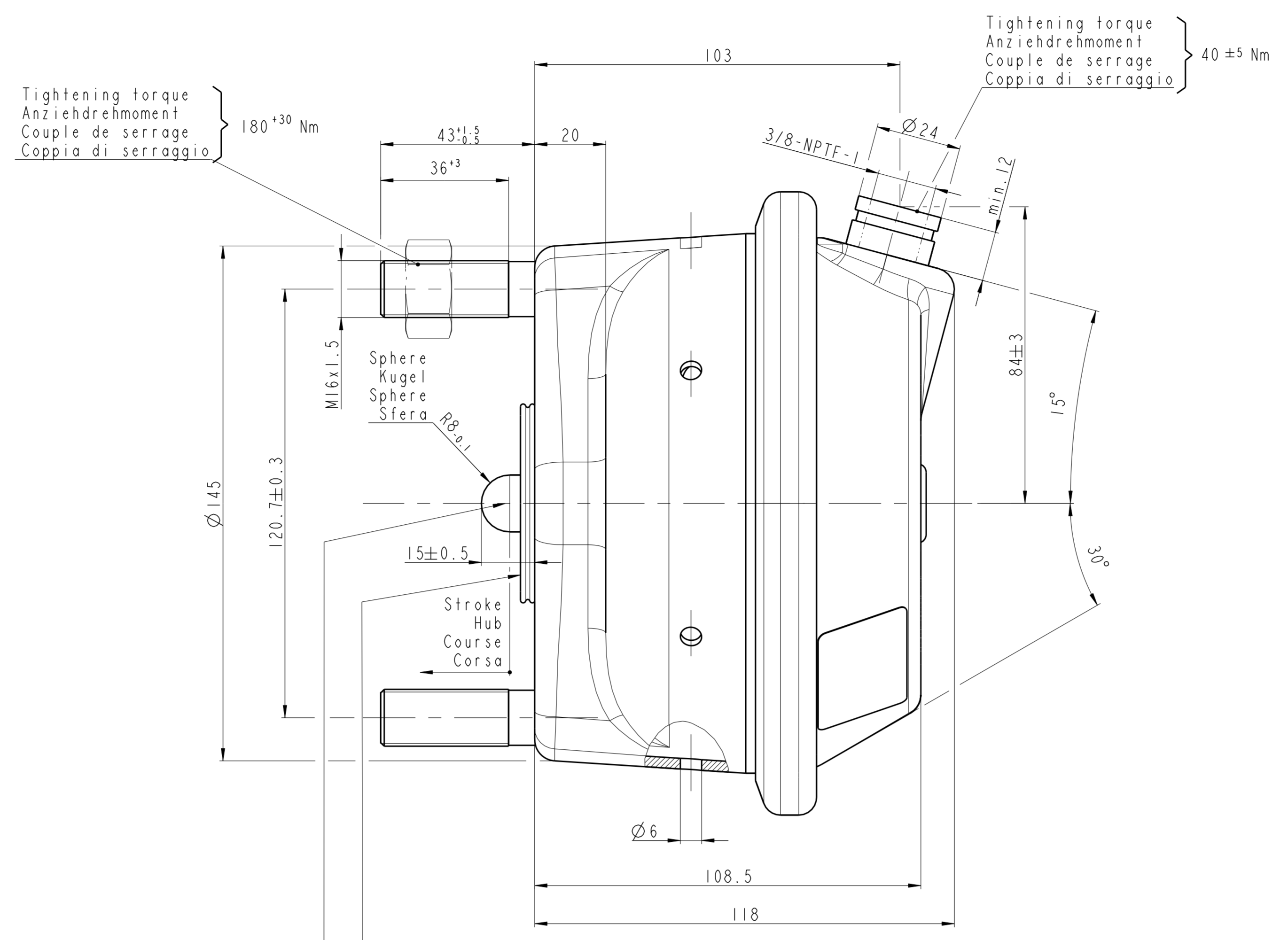
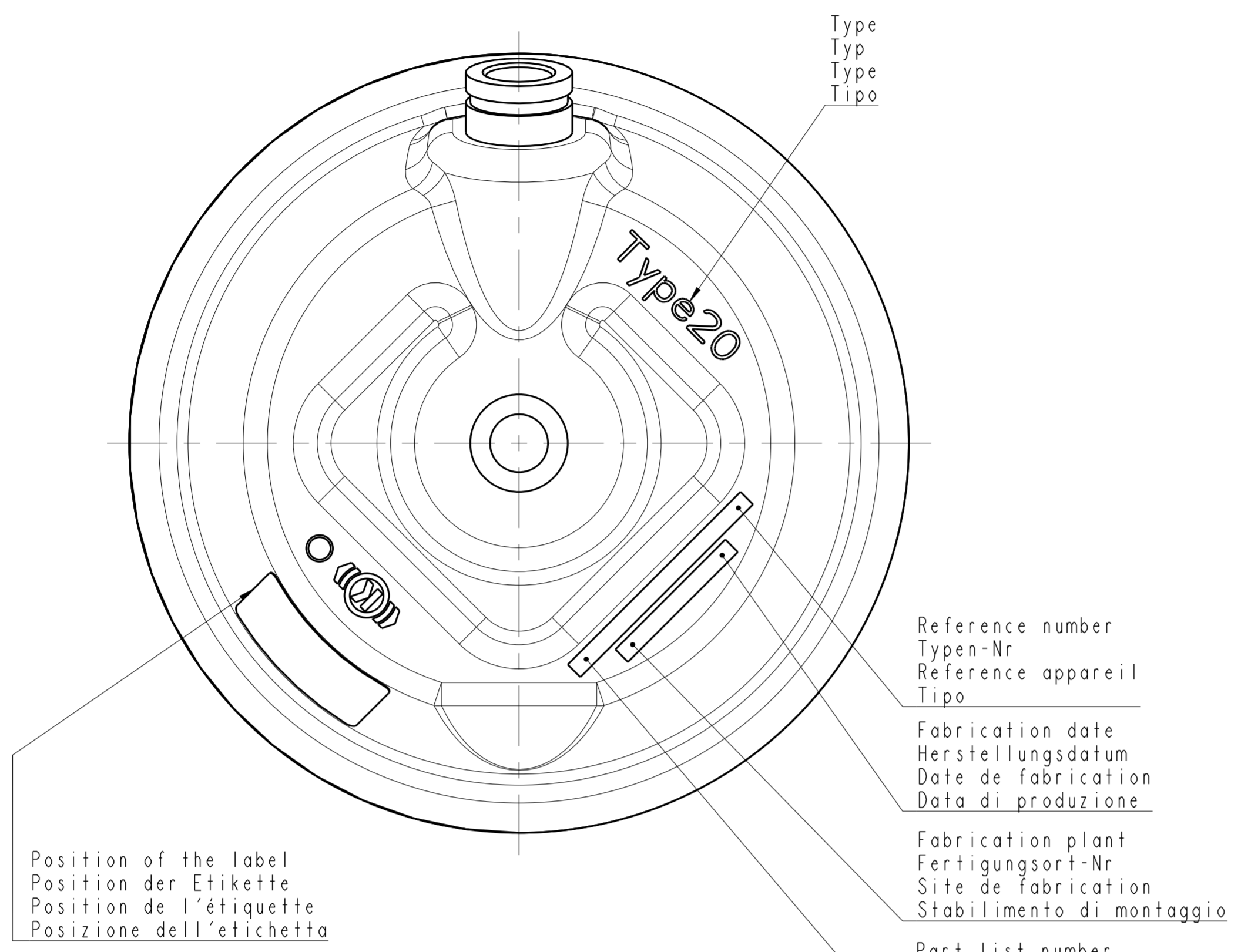


Tolerances/Toleranzen/Tollerances/Tolleranze					
Nominal dimensions in mm					
Cotes nominales en mm					
Dimensioni nominali in mm					
<6	>6	>30	>80	>120	>315
±1	±1.5	±2	±2.5	±3	±4

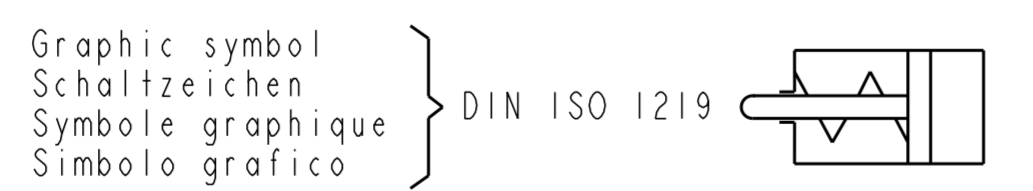
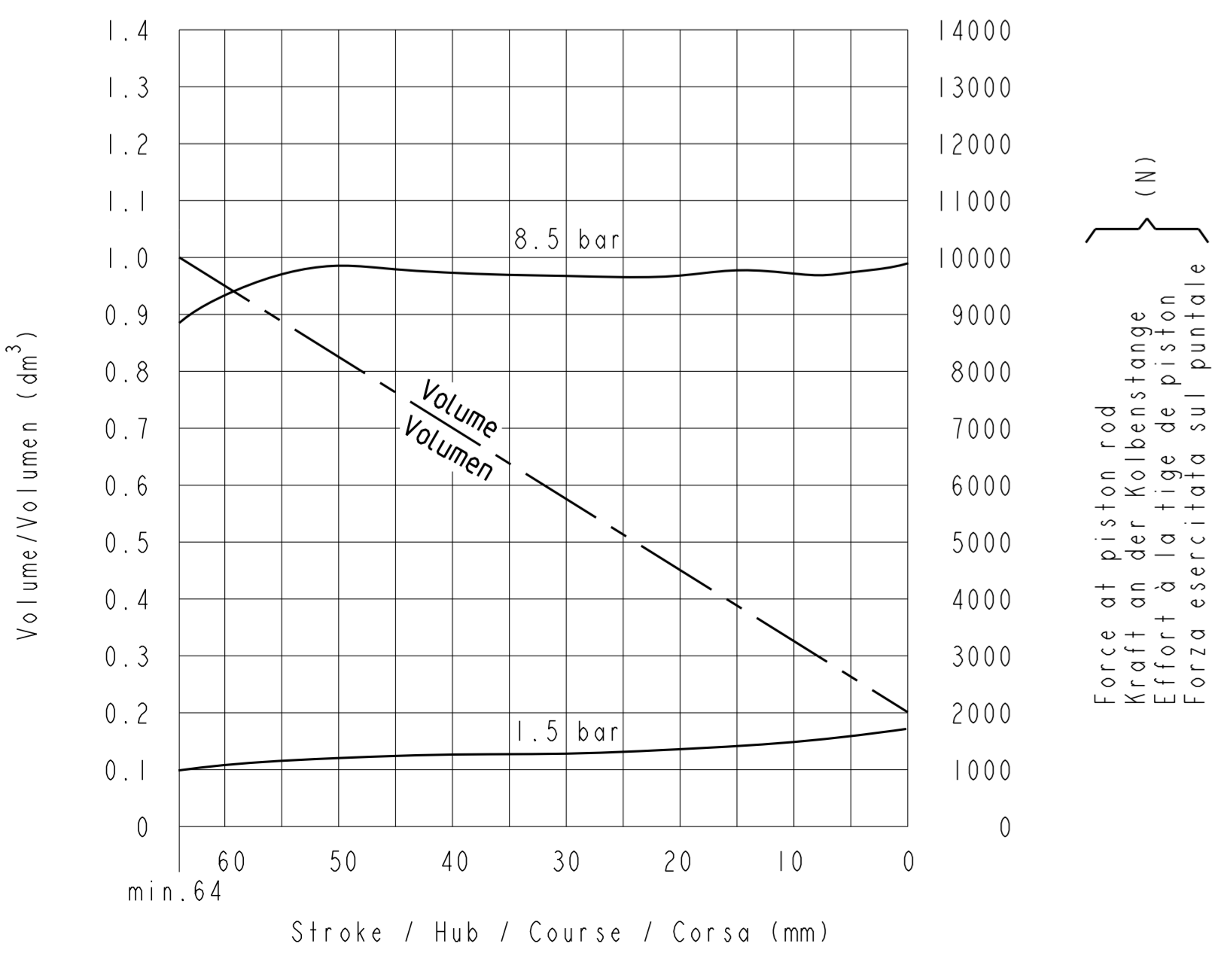
- General presentation, exact orientation of the components, see below.
 - Allgemeine Darstellung, fuer genaue Teilorientierung, siehe Ansicht unten.
 - Présentation générale, orientation exacte des pièces, voir vue en bas.
 - Presentazione generale. Per l'orientazione corretta dei pezzi, vedere il disegno sotto.



For additional information see specification C15651
Für zusätzliche Informationen siehe Spezifikation C15651
Pour toutes informations complémentaires voir la spécification C15651
Per ulteriori informazioni vedere la specifica C15651

Force of return spring at stroke 0 mm
Kraftabgabe der Rückholfeder bei Hub 0 mm
Force du ressort de rappel à une course de 0 mm
Forza della molla di ritorno ad una corsa di 0 mm } F = 220 ± 20 N

Diagram of service brake
Diagramm der Betriebsbremse
Diagramme du frein de service
Diagramma del freno di servizio } Type 20

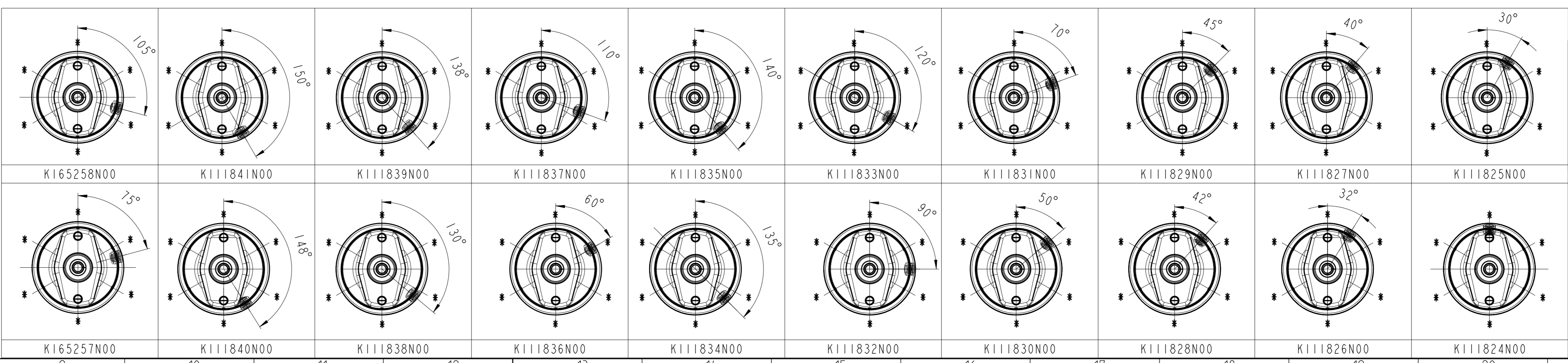


Breather holes opened
Atmungsbohrungen geöffnet
Trous de respiration ouverts
Fori di respirazione aperti } Ø 6

Exhaust hole must be directed downwards when mounted
Entlüftung muss im eingebauten Zustand nach unten zeigen
L'orifice d'échappement doit être dirigé vers le bas en état monté
Installato il foro di scarico dovrà essere rivolto verso il basso

Warning / Nachricht / Avertissement / Avvertimento

This brake actuator can only be used on applications for which it has been formally validated by Knorr-Bremse
Dieser Bremszylinder darf nur für Applikationen angewendet werden, für die er von Knorr-Bremse freigegeben worden ist
Cet actionneur de frein ne doit être utilisé que sur les applications pour lesquelles il a été formellement homologué par Knorr-Bremse
Questo cilindro a molla deve essere utilizzato solo per applicazioni benestriate formalmente dalla Knorr-Bremse



Model	Weight
BS2412 - K165258N00	3.2 kg
BS2411 - K165257N00	3.2 kg
BS3844 - K111841N00	3.2 kg
BS3843 - K111840N00	3.2 kg
BS3842 - K111839N00	3.2 kg
BS3841 - K111838N00	3.2 kg
BS3840 - K111837N00	3.2 kg
BS3839 - K111836N00	3.2 kg
BS3838 - K111835N00	3.2 kg
BS3837 - K111834N00	3.2 kg
BS3836 - K111833N00	3.2 kg
BS3835 - K111832N00	3.2 kg
BS3834 - K111831N00	3.2 kg
BS3833 - K111830N00	3.2 kg
BS3832 - K111829N00	3.2 kg
BS3831 - K111828N00	3.2 kg
BS3830 - K111827N00	3.2 kg
BS3829 - K111826N00	3.2 kg
BS3828 - K111825N00	3.2 kg
BS3827 - K111824N00	3.2 kg
KB-ref. number KB-Bestell-Nr KB-No de ref. Codice KB	Weight Gewicht Masse Massa

Type 20

001 03004929 - closing, interface 02/09/2018 KNP
000 03020408 - 01 release 02/07/2018 GMP

Numbers of described parts: ISO 120-30 Special Characteristics: 0 (S/C) Surface Treatment: Length unit: mm Scale: 1:1
First Angle Proj. General: Tolerances: Material: Make from: 2072706 Brake Chamber (Disc)

Drawn: 02/07/2018 HDB Vase a diaphragma (disc)
Release Pressure: Documentation: Drawing Number: 2072706
Information in Watermark: 001

Knorr-Bremse Group