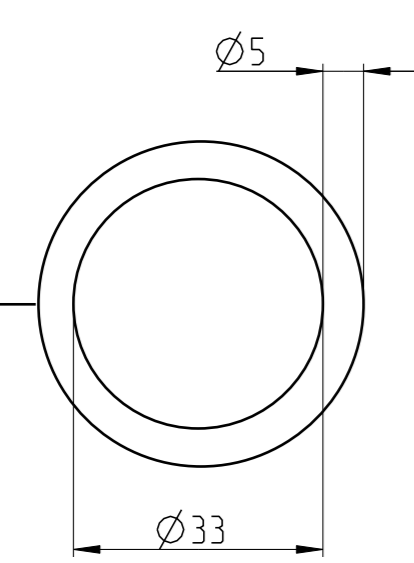


X 2:1  
Dichtring demontiert  
Sealing ring disassembled  
Joint non assemblé  
Anello di tenuta non assemblato



Zubehoer / Accessory /  
Accessoires / Accessori  
O-Ring / O-seal  
Joint / Anello

Einbaulage stehend (wie gezeichnet)  
max. 60° geneigt  
Installation position upright (as drawn)  
tilt to any side max. 60°  
Position de montage au repos (comme dessiné)  
pente max. 60°  
Posizione di montaggio verticale (come disegnato)  
inclinazione max. 60°

Betriebsdruck max.: 14 bar  
Operating pressure max.: 14 bar  
Pression de service max.: 14 bar  
Pressione di esercizio max.: 14 bar

Staudruck bei 7 bar und 400 NI/min: < 0.3 bar  
Dynamic pressure at 7 bar and 400 NI/min: < 0.3 bar  
Pression dynamique a 7 bar et 400 NI/min: < 0.3 bar  
Pressione dinamica con 7 bar e 400 NI/min: < 0.3 bar

Schuetzelfestigkeit: 10g  
Resistance against vibrations: 10g  
Resistance aux vibrations: 10g  
Resistenza alle vibrazioni: 10g

Thermischer Anwendungsbereich:  
Funktionsicherheit -30°C...+65°C  
Temperaturverträglichkeit -40°C...+80°C

Permissible temperature range:  
Functional reliability -30°C...+65°C  
Temperature compatibility -40°C...+80°C

Champ d'application thermique:  
Sécurité de fonctionnement -30°C...+65°C  
Température acceptable -40°C...+80°C

Campo d'impiego termico:  
Sicurezza di funzionamento -30°C...+65°C  
Temperatura accettabile -40°C...+80°C

Taupunktabsenkung: min. 30°C gemessen am Knorr-Bremse  
Referenzsystem (Taupunkt der angesaugten Luft 1l°C)  
Dew point lowering: min. 30°C measured at Knorr-Bremse  
reference system (dew point of the air intake 1l°C)  
Baisse de température de degivrage: min. 30°C mesuré sur  
le système de référence Knorr-Bremse (degivrage de l'air 1l°C)  
Abbassamento punto di rugiada: min. 30°C misurato secondo  
il sistema di riferimento Knorr-Bremse (punto di rugiada  
dell'aria aspirata 1l°C)

Text: RAL 9003 signal weiss  
Text: RAL 9003 signal white  
Texte: RAL 9003 blanche de sécurité ⑤  
Testo: RAL 9003 bianco segnale

\*Gehäuse: Oberfläche RAL 5010 enzianblau  
\*Housing: Surface RAL 5010 gentian blue  
\*Carter: Surface RAL 5010 blue gentiane  
\*Carcassa: Superficie RAL 5010 blu genziana

Aufdruck ueber Umfang verteilt  
Imprint over circumference  
Impression sur la circonference  
Stampa lungo la circonferenza



Disclaimer

The information contained herein is intended for the exclusive use of trained persons within the commercial vehicle industry. This product or component may be suitable only for the specific application set forth herein. Statements regarding the suitability of products for certain types of applications are based on Knorr-Bremse understanding of typical requirements. Such statements, however, are not binding statements about the suitability of products for any different application. It is at all times the user's responsibility to validate the suitability of a particular product for use in a different application than contained herein. This information does not purport to be all-inclusive and no responsibility is assumed as a result of its use. In no event may we be held liable for any damage or loss except in the case of willful intent or gross negligence on our part, or if any mandatory legal provisions apply.

005	TSK424077.C.0035833	08.06.2016	Pauner-B
004	TSK423762.C.0022795	23.04.2014	Hoerhagl
003	TSK01963.EC.0006455	23.05.2007	Schabel
Rev.	Revision Reference	Date	Name
Numbers of described parts:	ISO 128-30	Special Characteristics:	0 [S/C] Surface Treatment:
1140100F	or	Tolerancing Principle ISO 14405	Material:
See Table 1	First Angle Proj.	General Tolerances ISO 2768 - m/Made from:	
CAD Model No.:	K016751	Corners ISO 13715	Desiccant Cartridge
KNORR-BREMSE	CAD Sys.: PRO/ENGINEER	Format A1	Trockenmittelpatrone
Systeme für Nutzfahrzeuge GmbH	Responsible Dept./Team	MDT2	Cartouche dessiccateur
	Drawn	2010/06/29	Hörhagl
	Release Process Documentation		Cartuccia essiccatore
	in EDM, Level and Status		Drawing Number
	Information in Watermark:		Z002286
			Doc-Type ID Language: 71
			Draw-Rev: 005
			Sheet 1 of 1