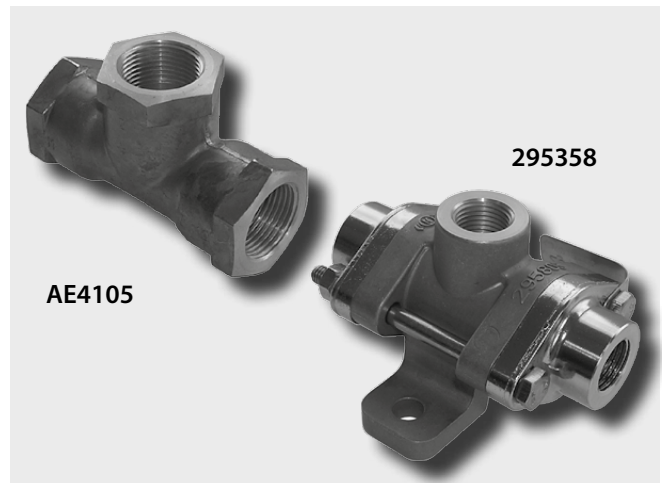


Function

A **Double Check Valve** can accept signal pressures from two separate sources, the higher pressure will be delivered and the lower pressure will be isolated.

The Double Check Valve is often used as an anti-compounding device for vehicles equipped with spring brake actuators.

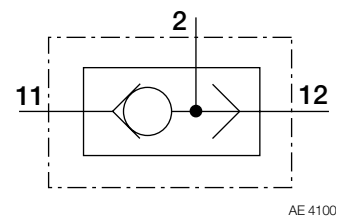
If a vehicle is parked (no pressure in spring portions of the spring brake actuators) and the service brake is subsequently applied, the Double Check Valve directs service pressure into the spring portions of the spring brake actuators. This eliminates the compounding force of a simultaneous parking brake and service brake application which can damage the vehicle's foundation brakes.



Technical Features

Maximum operating pressure:	10 bar
Operating Temperature Range:	-40 °C to +80 °C
Way through:	Ø 14 mm
	Ø 11 mm
Minimum pressure differential:	0.15 bar
Weight:	0.10 kg approx.
	0.32 kg approx.

Standard Symbol as DIN ISO 1219

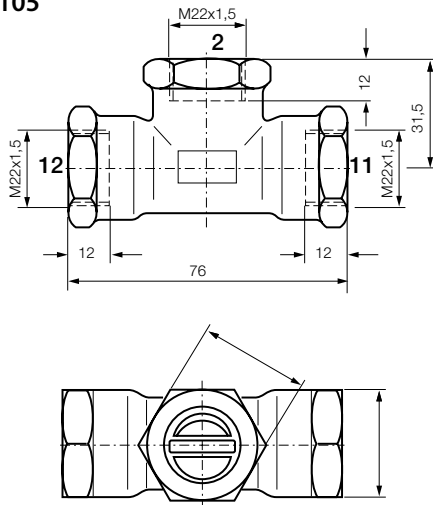


Range Overview

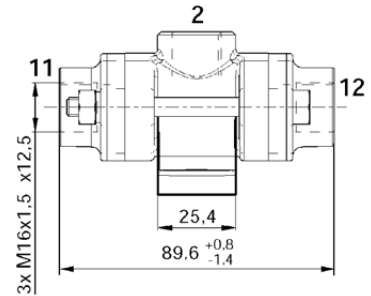
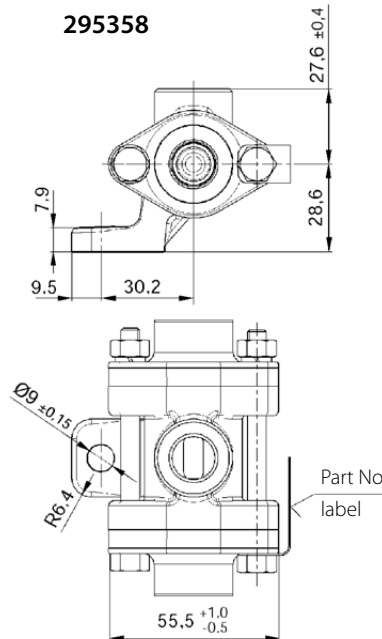
Part No.	Type No.	Air Port Threads	Design
I40405	AE4105	M22x1.5	Without bracket
295358	-	M16x1.5	With bracket

Dimensions

AE4105



295358



Air ports:
11 = Inlet
12 = Inlet
2 = Delivery

Installation

Double Check Valves are designed to be in-line or bracket mounted.

Servicing

Double Check Valves are not serviceable.

Revision Details

Rev. 003	April 2019	New Layout



Knorr-Bremse Group

Knorr-Bremse Systems for Commercial Vehicles
Moosacher Strasse 80 | 80809 Munich | Germany
Tel: +49 89 3547-0 | Fax: +49 89 3547-2767
WWW.KNORR-BREMSECVS.COM

Note

All information is subject to change. A printed version of this document may therefore not correspond to the latest revision. To obtain the latest version, please visit our website www.knorr-bremseCVS.com or contact a Knorr-Bremse representative in your area.

If service work is carried out on a vehicle based on information provided herein, it is the responsibility of the workshop to ensure the vehicle is fully tested and in full functional order before the vehicle is returned into service. Knorr-Bremse accepts no liability for problems caused as a result of appropriate tests not being carried out.

Copyright © Knorr-Bremse AG

All rights reserved, including industrial property rights applications. Knorr-Bremse AG retains any power of disposal, such as for copying and transferring.

Up-to-date information on our products can be found on our website www.knorr-bremseCVS.com

Disclaimer

The information contained herein is intended for the exclusive use of trained persons within the commercial vehicle industry, and must not be passed on to any third party. All recommendations regarding products and their servicing or usage are with reference to Knorr-Bremse products and should not be considered applicable to products from other manufacturers.

This information does not purport to be all-inclusive and no responsibility is assumed as a result of its use. We cannot accept any liability nor offer any guarantee regarding data accuracy, completeness or timeliness.

The information does not represent any guarantee or ensured characteristics of the Products or Systems described. No liability can be accepted based on the information, its use, recommendations or advice provided. In no event may we be held liable for any damage or loss except in the case of wilful intent or gross negligence on our part, or if any mandatory legal provisions apply.

This disclaimer is an English translation of a German text, which should be referred to for all legal purposes. Any legal disputes arising from the use of this information shall be subject to German law.