

In normal stopping situations, the driver activates the yellow caution lights when approaching a stop (where required), applies the service brake to bring the bus to a complete stop, pulls the parking brake to park the bus, and finally, opens the door to activate the flashing red lights and extend the stop sign. This final step activates the AutoBrake system, eliminating the need for the driver to activate the parking brake.

The Bendix AutoBrake uses a pneumatic solenoid, powered by the vehicle's stop arm solenoid circuit. When used properly in compliance with state regulations, AutoBrake's nominal 44 psi rear axle service brake application prevents the bus from rolling, without having to use the parking brake. When the driver closes the door to continue on the route, AutoBrake is automatically released.

AutoBrake is a supplemental brake system, and is not intended as a parking brake. That means the driver still needs to keep their foot on the brake pedal. If the driver removes his or her foot during the AutoBrake application, a warning buzzer and amber dash lamp will activate. The buzzer and lamp will deactivate when brake pressure is reapplied or the parking brake is engaged.

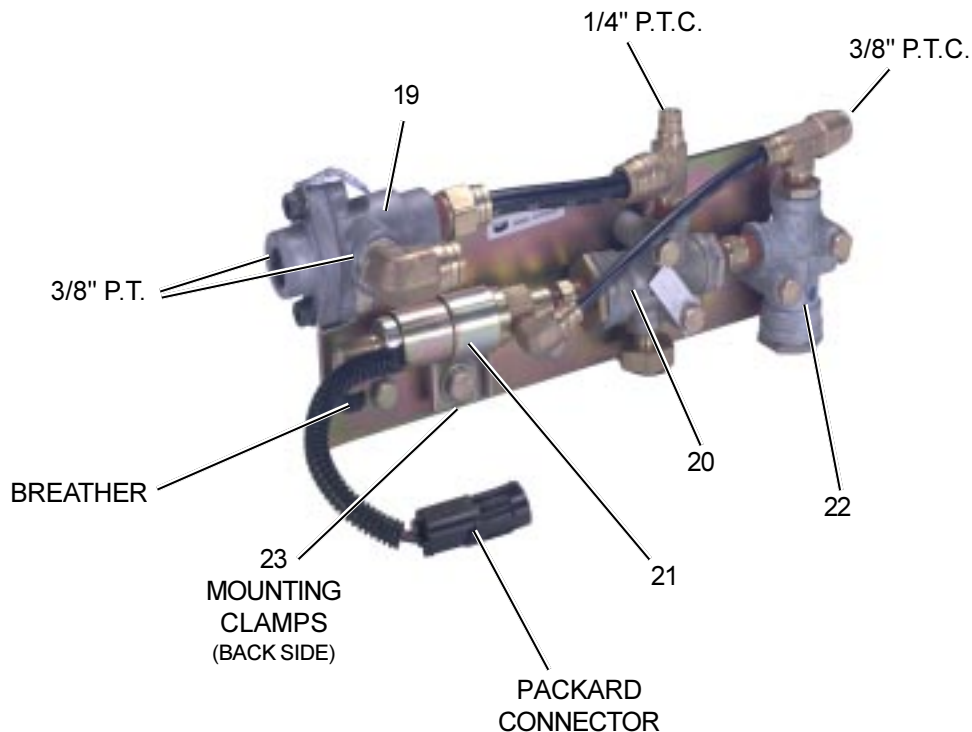
AutoBrake kits are available for both sequential and non-sequential systems. Follow the test procedure shown here to identify the appropriate kit for your vehicle.

Device Code 9803

The AutoBrake Module is included in retrofit kit piece number 5008285 and 5011053 only and is not available as a service replacement. For servicing refer to the components shown below.

THE FOLLOWING COMPONENTS ARE AVAILABLE FOR SERVICING OF THE AUTOBRAKE MODULE:

ITEM	DESCRIPTION	QTY.	SERVICE PC. NO.
19	Double Check Valve	1	278614
20	Synchronizing Valve	1	5005365
21	Solenoid Air Valve	1	5008274
22	Pressure Reducing Valve	1	107154
23	Mounting Clamps	3	5008290

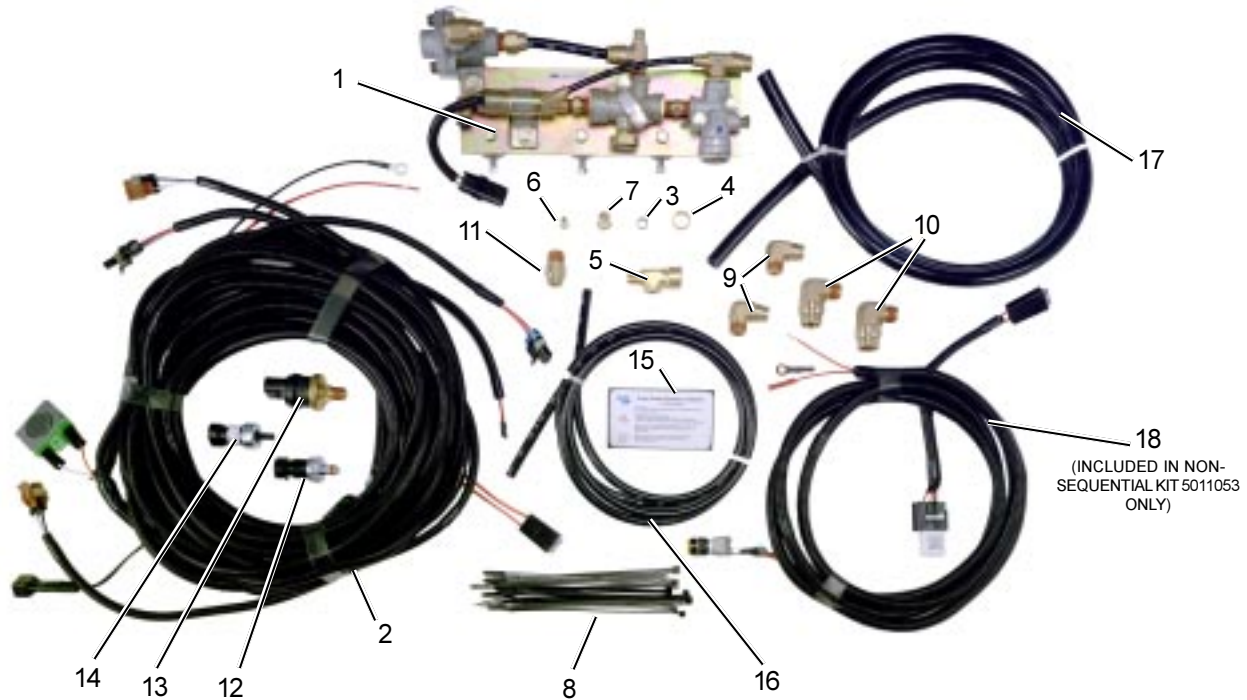


See Page 98-B-2 for retrofit kit component list

Test procedure to determine if your bus has a sequential or non-sequential lighting system

Verify there is power to the flasher unit indicating the system is on. Open the bus door without turning on the amber lamps. If the stop arm extends and red lights flash, the bus has a non-sequential lighting system and the correct Bendix AutoBrake kit to order is part number 5011053.

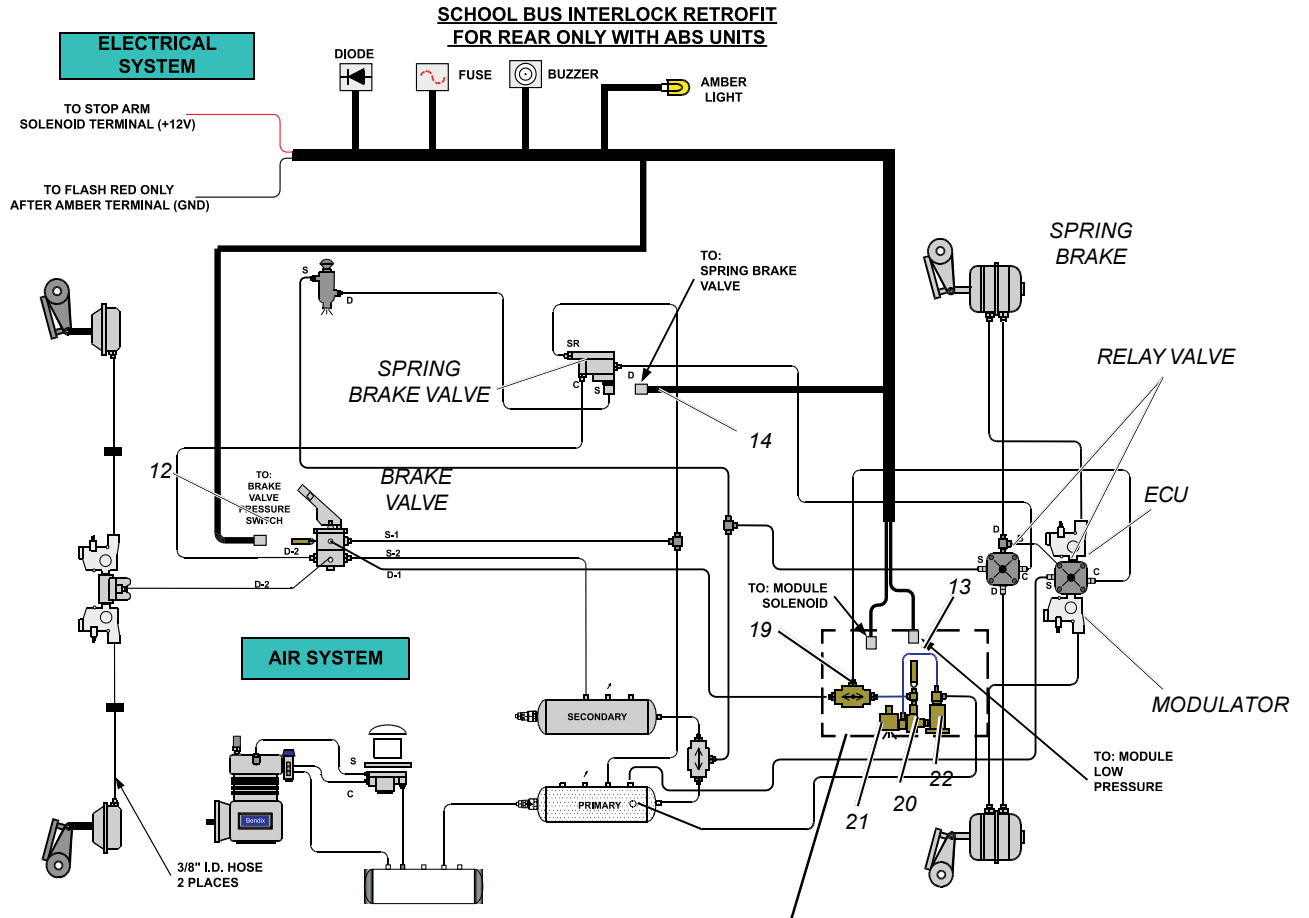
If the stop arm does not extend and the red lights do not flash, the bus has a sequential lighting system and the correct Bendix AutoBrake kit to order is part number 5008285.



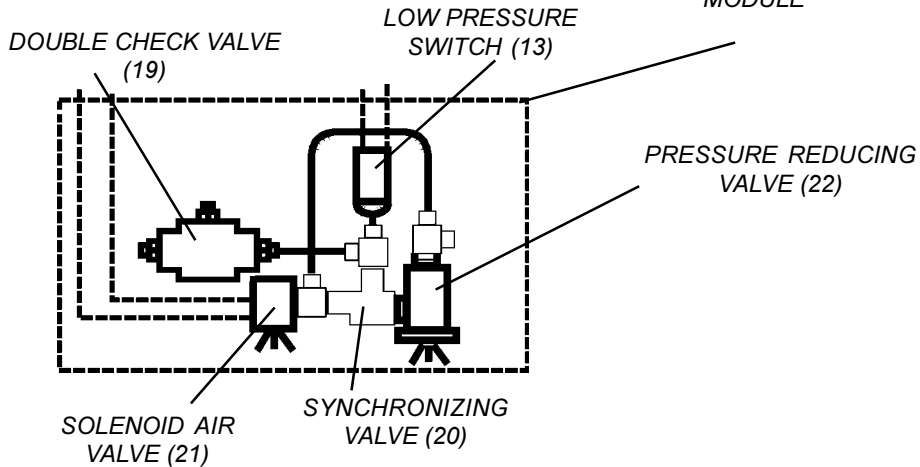
**THE AUTOBRAKE RETROFIT KIT PC. NO. 5008285 & 5011053
CONSISTS OF THE FOLLOWING COMPONENTS:**

ITEM	DESCRIPTION	QTY.	SERVICE PC. NO.
1	Module	1	
2	Wiring Harness	1	5008055
3	3/8" Tube Sleeve	1	
4	5/8" Tube Sleeve	1	
5	Pipe Tee	1	
6	3/8" Brass Insert	1	
7	5/8" Brass Insert	1	
8	Cable Tie	12	
9	1/4" 90° Male Elbow	2	
10	5/8" 90° Male Elbow	2	
11	Male Connector	1	
12	Pressure Switch (6-10 PSI)	1	5008275
13	Low Pressure Switch (15-25 PSI) PTC	1	5008276
14	Park Brake Pressure Switch	1	5008289
15	Warning Label	1	
16	3/8" Nylon Tubing x 8'	1	
17	5/8" Nylon Tubing x 8'	1	
18*	Wiring Harness	1	

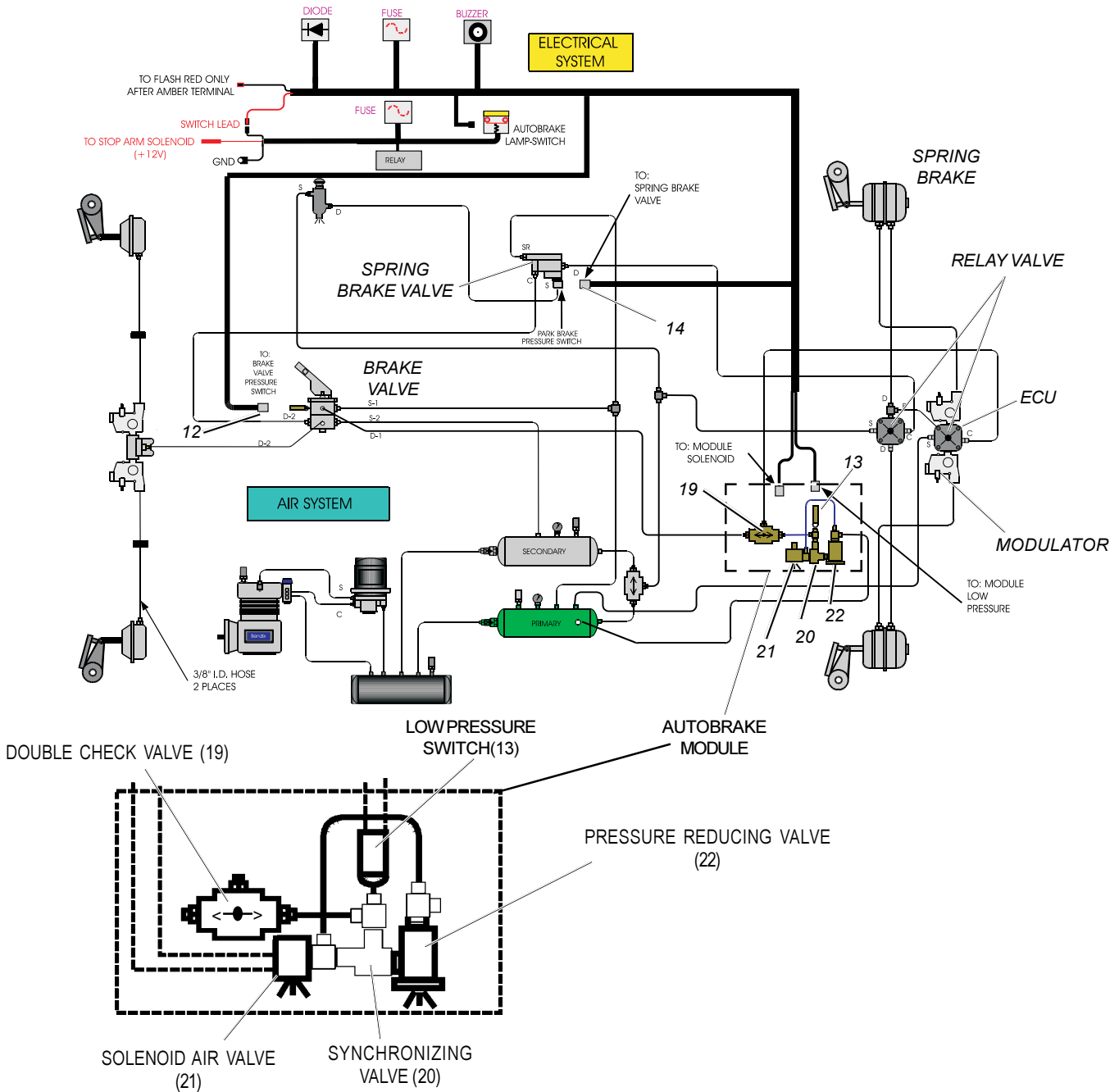
*for Kit 5011053 only



**AUTOBRAKE
MODULE**



AutoBrake sequential kit part number 5008285 installed on a vehicle with antilock.



AutoBrake non-sequential kit part number 5011053 installed on a vehicle with antilock.