

Technical Bulletin



Bulletin No: TCH-013-027

Effective Date: Sept. 6, 2016

Cancels: NA

Page: 1 of 2

Subject: **Connecting Bendix® ACom® Diagnostic Software to Bendix® TABS-6™ Trailer ABS Standard and Premium Modules**

The Bendix® ACom® Diagnostic Software package – a free download from bendix.com – is used by technicians to troubleshoot and perform configuration changes on a wide range of Bendix® ABS controllers. For the majority of controllers, the latest release of the software – currently version 6.10 – is used.

Bendix® TABS-6™ Standard and Premium modules, however, need to use an earlier version (5.12). That version is automatically installed by the software package on your PC, along with the current version.



Figure 1 - Bendix® TABS-6™ Standard or Premium Module

When an upgrade of the ACom Diagnostic Software is installed, the first time you use the software to connect to a Bendix TABS-6 Standard or Premium controller, follow the instructions below to ensure that version 5.12 of the software is set up correctly for these devices.

1. Start the Bendix ACom Diagnostic Software, select TABS-6 from the list of controllers, and choose “Start in demo mode.” See Figure 2.

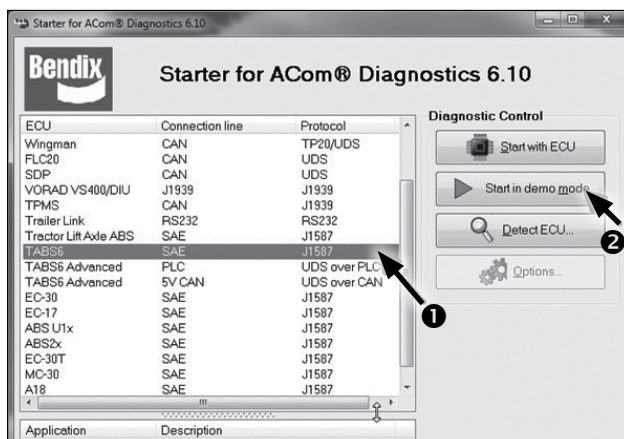


Figure 2 - Starter Screen Selections

2. A dialogue box will be displayed. See Figure 3.



Figure 3 - Select Real Mode

Respond “Yes” to switch to “real” mode (from “demo” mode).

3. A Diagnostic Interface Selection dialog box will appear. See Figure 4. Select the RP1210 adapter that you are using from the list and click “OK”.

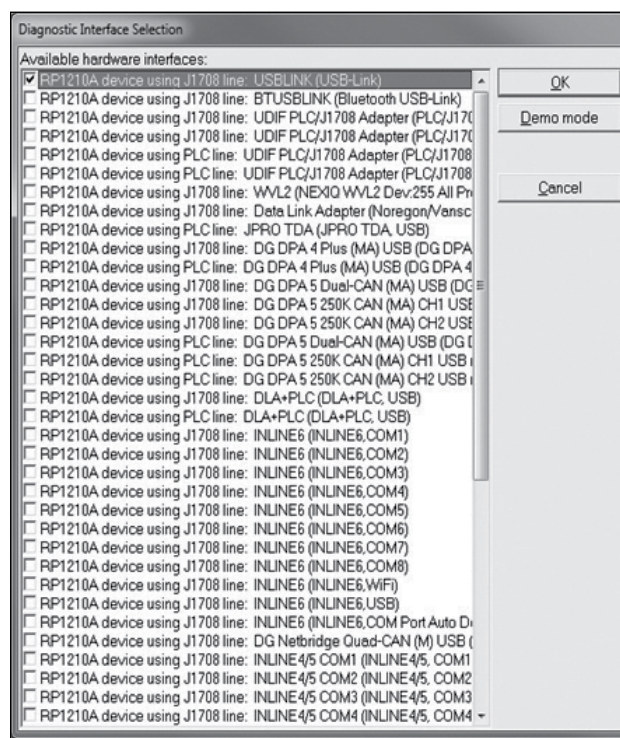


Figure 4 - The Diagnostic Interface Selection Screen

4. The diagnostic interface for Bendix® TABS-6™ Standard and Premium modules will be launched. See Figure 5. The status screen displays information, provides tools for troubleshooting and enables configuration changes.

Note: These steps are only required the first time a PC using the Bendix® ACom® Diagnostic Software connects to a Bendix TABS-6 Standard and Premium module. These steps may need to be repeated after future software updates.

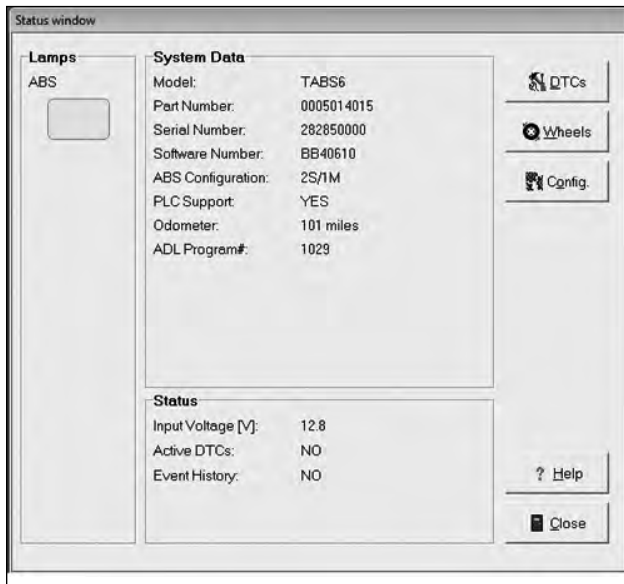


Figure 5 - The Bendix TABS-6 Controller Status Window

Reference Documents:

For Bendix TABS-6 Standard and Premium Controllers download/ order *Bendix Service Data Sheet* SD-13-4767.

Downloads: Go to bendix.com to download Bendix ACom Diagnostic Software and visit the Document Library for Service Data Sheets.

Printed Copies: Literature can be ordered directly from the online Bendix Literature Center. To register or to access your existing account, visit bendix.com and click on the "Marketing Center" tab at the top of the bendix.com homepage, or use the same link on foundationbrakes.com.



Log-on and Learn from the Best

On-line training that's available when you are —24/7/365.
Visit www.brake-school.com.

Trademarks. The ACom and TABS-6 trademarks are licensed to or owned by Bendix Commercial Vehicle Systems LLC.