

UP2DATE

ORIGINAL KNORR-BREMSE GUIDE AND SEAL KITS

From OE to IAM – Original quality over the entire life cycle

For over 40 years, Knorr-Bremse's pneumatic Disc Brakes have been the first choice of virtually all major vehicle manufacturers worldwide. With its continuous developments to make commercial vehicles even safer under braking, Knorr-Bremse is the choice for associated maintenance parts, with the same highest standards for safety and reliability and low life cycle costs.

The service concept, which is perfectly suited to each Disc Brake, includes all the necessary spare parts for Brake maintenance. One of these is the maintenance of the guiding system. To suit every Disc Brake application, Knorr-Bremse offers original-quality Guide and Seal Kits for the various floating bearing variants.

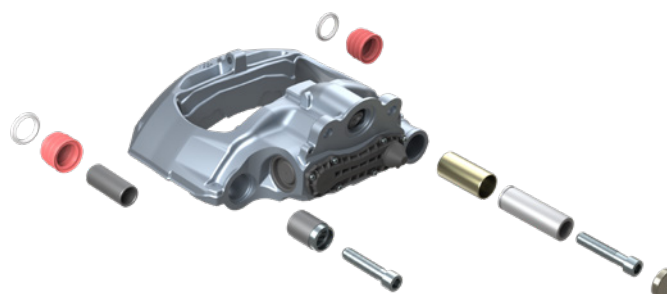
Knorr-Bremse Guide and Seal Kits are perfectly matched to the Brake and, with the highest material quality and tolerances, ensure excellent performance and durability of the Brake. Knorr-Bremse not only has the knowledge, but access to original equipment specifications and design and revision levels required for the Knorr-Bremse Disc Brake. This means that even if spare parts from other manufacturers initially look identical, you cannot be sure that they meet the complex requirements set by Knorr-Bremse. This can reduce the service life and functional reliability of the components and safety critical aspects of the Brake.

You can identify which Guide and Seal Kit is perfect for your Brake at any time on our website:

truckservices.knorr-bremse.com

At a glance

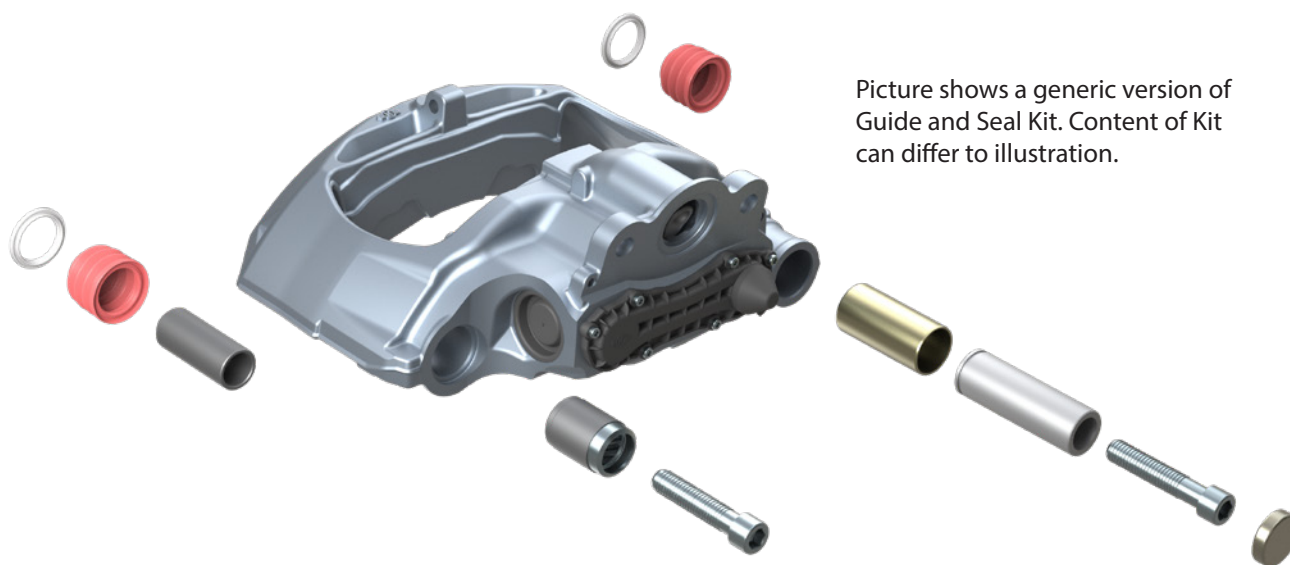
- › Guide and Seal Kits perfectly matched to the Brake
- › Service parts in OE quality
- › Increased service life and functional reliability



Overview of the Guide and Seal Kits offered on the aftermarket

For pneumatic Disk Brakes from Knorr-Bremse

Depending on the Brake generation and/or application, different floating bearing variants are installed in Knorr-Bremse pneumatic Disc Brakes. To facilitate maintenance of the pneumatic Disc Brake's guiding system, Knorr-Bremse offers appropriate Guide and Seal Service Kits. The appropriate Service Kit is assigned to each Brake. You can identify which Kit is suitable for your Brake at any time on our website truckservices.knorr-bremse.com.



Picture shows a generic version of Guide and Seal Kit. Content of Kit can differ to illustration.

Overview of Floating Bearing variants



Rubber Bush



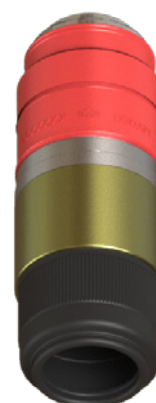
Open Bearing



Guide Sleeve
(variants with/
without fixing tab)



Capped
Rubber Sleeve



Double Roll Bearing

The following pages contain an excerpt of the most important Guide and Seal Kits offered by Knorr-Bremse on the aftermarket.

Table of key Guide and Seal Kits offered on the Independant Aftermarket

Note: Overview shows the most common Guide and Seal Kits offered to IAM. To identify which Guide and Seal Kit fits your brake, check our website for the latest information: truckservices.knorr-bremse.com.

You will find Information on how to find the right Kit for your brake after the application list.

Guide & Seal Kit	Main Application	Brake Type	Main IAM Part Numbers (extract)	Type Number	Description
K001915	Mercedes-Benz	SL7	K052380K50	SL7504RC	Caliper - Rationalized
			K052381K50	SL7514RC	Caliper - Rationalized
			K052382K50	SL7505RC	Caliper - Rationalized
			K052383K50	SL7515RC	Caliper - Rationalized
		SM7	K046528K50	SM7500RC	Caliper - Rationalized
			K046529K50	SM7510RC	Caliper - Rationalized
			K052390K50	SM7002RC	Caliper - Rationalized
			K052391K50	SM7012RC	Caliper - Rationalized
			K052392K50	SM7003RC	Caliper - Rationalized
			K052393K50	SM7013RC	Caliper - Rationalized
K001928	Mercedes-Benz, MAN	SN5	K004570	SN5005RC	Caliper - Rationalized
			K004571	SN5015RC	Caliper - Rationalized
			K004572	SN5006RC	Caliper - Rationalized
			K004573	SN5016RC	Caliper - Rationalized
			K005610	SN5023RC	Caliper - Rationalized
			K005611	SN5033RC	Caliper - Rationalized
			K011125	SN5020RC	Caliper - Rationalized
			K011126	SN5030RC	Caliper - Rationalized
			K147303X50	SN5005	EconX Caliper
			K147304X50	SN5015	EconX Caliper
			K147305X50	SN5006	EconX Caliper
			K147306X50	SN5016	EconX Caliper
			K147307X50	SN5023	EconX Caliper
			K147308X50	SN5033	EconX Caliper
K010813	MAN	SB7	K212472K50	SB7968RC	Caliper - Rationalized
			K212473K50	SB7978RC	Caliper - Rationalized
K028451	Mercedes-Benz	SN6	K013175	SN6557RC	Caliper - Rationalized
			K013176	SN6567RC	Caliper - Rationalized
			K013177	SN6558RC	Caliper - Rationalized
			K013178	SN6568RC	Caliper - Rationalized
			K140754X50	SN6567	EconX Caliper
			K140755X50	SN6557	EconX Caliper
			K140756X50	SN6568	EconX Caliper
			K140757X50	SN6558	EconX Caliper
K067417K50	Iveco, MAN	SB6	K002919	SB6408RC	Caliper - Rationalized
			K002920	SB6418RC	Caliper - Rationalized
			K002923	SB6401RC	Caliper - Rationalized
			K002924	SB6411RC	Caliper - Rationalized

Table of key Guide and Seal Kits offered on the aftermarket continued...

Guide & Seal Kit	Main Application	Brake Type	Main IAM Part Numbers (extract)	Type Number	Description
K067417K50	Iveco, Mercedes-Benz	SN6	K003789	SN6554RC	Caliper - Rationalized
			K003790	SN6564RC	Caliper - Rationalized
			K003825	SN6555RC	Caliper - Rationalized
			K003826	SN6565RC	Caliper - Rationalized
			K003827	SN6610RC	Caliper - Rationalized
			K003828	SN6620RC	Caliper - Rationalized
			K013173	SN6570RC	Caliper - Rationalized
			K013174	SN6580RC	Caliper - Rationalized
			K013221	SN6595RC	Caliper - Rationalized
			K013222	SN6605RC	Caliper - Rationalized
			K055420K50	SN6654RC	Caliper - Rationalized
			K055421K50	SN6664RC	Caliper - Rationalized
			K132664X50	SN6570	EconX Caliper
			K132665X50	SN6580	EconX Caliper
		SB7 axial	K002561	SB7413RC	Caliper - Rationalized
			K002562	SB7403RC	Caliper - Rationalized
			K002708	SB7401RC	Caliper - Rationalized
			K002709	SB7411RC	Caliper - Rationalized
			K002793	SB7420RC	Caliper - Rationalized
			K002794	SB7430RC	Caliper - Rationalized
			K002797	SB7422RC	Caliper - Rationalized
			K002798	SB7432RC	Caliper - Rationalized
	DAF, Iveco, MAN, Mercedes-Benz, ZF	SB7 radial	K002962	SB7450RC	Caliper - Rationalized
			K002963	SB7460RC	Caliper - Rationalized
			K002964	SB7451RC	Caliper - Rationalized
			K002965	SB7461RC	Caliper - Rationalized
			K002966	SB7452RC	Caliper - Rationalized
			K002967	SB7462RC	Caliper - Rationalized
			K003192	SB7455RC	Caliper - Rationalized
			K003193	SB7465RC	Caliper - Rationalized
			K014065	SB7229RC	Caliper - Rationalized
			K014066	SB7239RC	Caliper - Rationalized
			K147311X50	SB7461	EconX Caliper
			K147312X50	SB7451	EconX Caliper
			K147313X50	SB7239	EconX Caliper
			K147314X50	SB7229	EconX Caliper
	BPW	SK7	K126631X50	SK7042	EconX Caliper
			K126632X50	SK7052	EconX Caliper

Table of key Guide and Seal Kits offered on the aftermarket continued...

Guide & Seal Kit	Main Application	Brake Type	Main IAM Part Numbers (extract)	Type Number	Description
K067417K50	DAF, Iveco, MAN, Mercedes-Benz, ZF	SN7	K003781	SN7185RC	Caliper - Rationalized
			K003782	SN7195RC	Caliper - Rationalized
			K003783	SN7186RC	Caliper - Rationalized
			K003784	SN7196RC	Caliper - Rationalized
			K003785	SN7187RC	Caliper - Rationalized
			K003786	SN7197RC	Caliper - Rationalized
			K003787	SN7188RC	Caliper - Rationalized
			K003788	SN7198RC	Caliper - Rationalized
			K003795	SN7189RC	Caliper - Rationalized
			K003796	SN7199RC	Caliper - Rationalized
			K003797	SN7200RC	Caliper - Rationalized
			K003798	SN7210RC	Caliper - Rationalized
			K003799	SN7201RC	Caliper - Rationalized
			K003800	SN7211RC	Caliper - Rationalized
			K003803	SN7203RC	Caliper - Rationalized
			K003804	SN7213RC	Caliper - Rationalized
			K003805	SN7204RC	Caliper - Rationalized
			K003806	SN7214RC	Caliper - Rationalized
			K003807	SN7205RC	Caliper - Rationalized
			K003808	SN7215RC	Caliper - Rationalized
			K003809	SN7206RC	Caliper - Rationalized
			K003810	SN7216RC	Caliper - Rationalized
			K003811	SN7207RC	Caliper - Rationalized
			K003812	SN7217RC	Caliper - Rationalized
			K003815	SN7209RC	Caliper - Rationalized
			K003816	SN7219RC	Caliper - Rationalized
			K004578	SN7241RC	Caliper - Rationalized
			K004579	SN7251RC	Caliper - Rationalized
			K010626	SN7265RC	Caliper - Rationalized
			K010627	SN7275RC	Caliper - Rationalized
			K013160	SN7289RC	Caliper - Rationalized
			K013161	SN7299RC	Caliper - Rationalized
			K026763	SN7366RC	Caliper - Rationalized
			K026764	SN7376RC	Caliper - Rationalized
			K108559K50	SN7504RC	Caliper - Rationalized
			K108560K50	SN7514RC	Caliper - Rationalized
			K184787K50	SN7201RC	Caliper - Rationalized
			K184788K50	SN7211RC	Caliper - Rationalized
			K237098K50	SN7524RC	Caliper - Rationalized
			K237099K50	SN7534RC	Caliper - Rationalized
			K136360X50	SN7217	EconX Caliper
			K136361X50	SN7207	EconX Caliper
			K136362X50	SN7211	EconX Caliper
			K136363X50	SN7201	EconX Caliper

Table of key Guide and Seal Kits offered on the aftermarket continued...

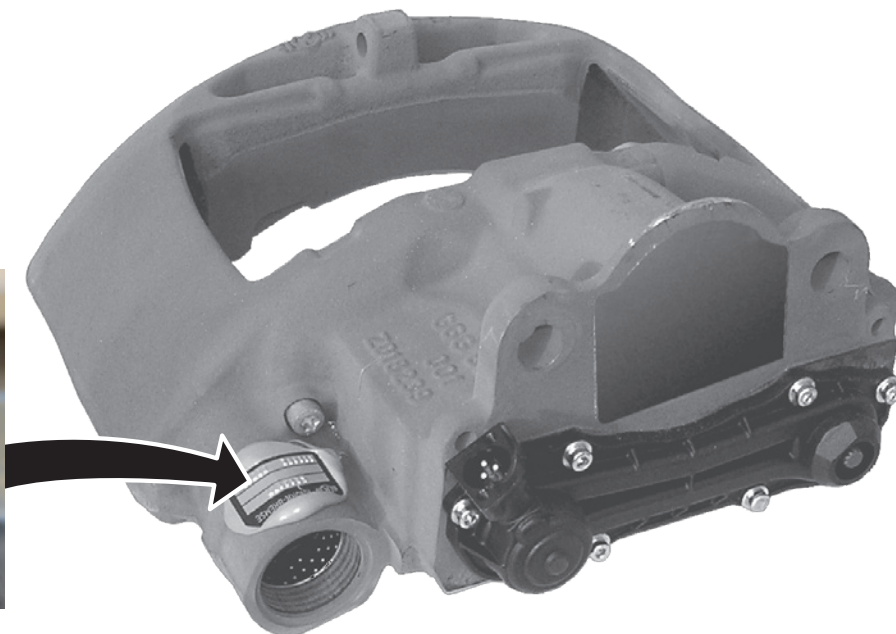
Guide & Seal Kit	Main Application	Brake Type	Main IAM Part Numbers (extract)	Type Number	Description
K067417K50	DAF, Iveco, MAN, Mercedes-Benz, ZF	SN7	K140244X50	SN7219	EconX Caliper
			K140245X50	SN7209	EconX Caliper
			K140738X50	SN7215	EconX Caliper
			K140739X50	SN7205	EconX Caliper
			K140740X50	SN7213	EconX Caliper
			K140741X50	SN7203	EconX Caliper
			K149854X50	SN7376	EconX Caliper
			K149855X50	SN7366	EconX Caliper
			K149856X50	SN7216	EconX Caliper
			K149857X50	SN7206	EconX Caliper
			K149860X50	SN7199	EconX Caliper
			K149861X50	SN7189	EconX Caliper
			K153781X50	SN7213	EconX Caliper
			K153782X50	SN7203	EconX Caliper
			K153783X50	SN7310	EconX Caliper
			K153784X50	SN7300	EconX Caliper
K099604K50	MAN	SN6	K009161	SN6558RC	Caliper - Rationalized
			K009162	SN6568RC	Caliper - Rationalized
			K013655	SN6582RC	Caliper - Rationalized
			K013656	SN6572RC	Caliper - Rationalized
K108002K50	SAF, Jost, Schmitz	SK7	K012633	SK7042RC	Caliper - Rationalized
			K012634	SK7052RC	Caliper - Rationalized
			K132662X50	SK7042	EconX Caliper
			K132663X50	SK7052	EconX Caliper
		ST6	K171978K50	ST6000RC	Caliper - Rationalized
			K171979K50	ST6010RC	Caliper - Rationalized
		ST7	K097530K50	ST7003RC	Caliper - Rationalized
			K097531K50	ST7013RC	Caliper - Rationalized
K133158K50	MAN, Scania	SB7 radial	K040940K50	SB7199RC	Caliper - Rationalized
			K040941K50	SB7189RC	Caliper - Rationalized
			K040945K50	SB7212RC	Caliper - Rationalized
			K040946K50	SB7202RC	Caliper - Rationalized
			K219961K50	SB7249RC	Caliper - Rationalized
			K219962K50	SB7259RC	Caliper - Rationalized
			K240910K50	SB7980RC	Caliper - Rationalized
			K240911K50	SB7990RC	Caliper - Rationalized
			K147315X50	SB7220	EconX Caliper
			K147316X50	SB7230	EconX Caliper
		SN7	K040953K50	SN7264RC	Caliper - Rationalized
			K040954K50	SN7274RC	Caliper - Rationalized
			K146387K50	SN7513RC	Caliper - Rationalized
			K146388K50	SN7503RC	Caliper - Rationalized
			K140242X50	SN7274	EconX Caliper
			K140243X50	SN7264	EconX Caliper
			K219963K50	SyD7000RC	Caliper - Rationalized
			K219964K50	SyD7010RC	Caliper - Rationalized
K223472K50	DAF	SyD7	K227567K50	SyT7001RC	Caliper - Rationalized
K227067K50*	Schmitz	SyT7	K227568K50	SyT7011RC	Caliper - Rationalized

* Available soon

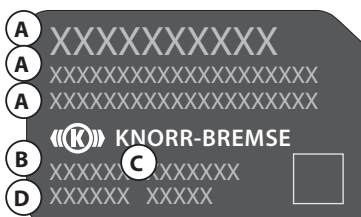
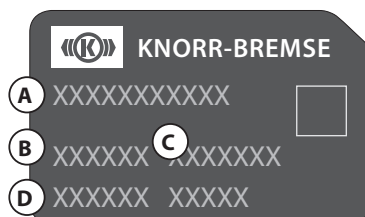
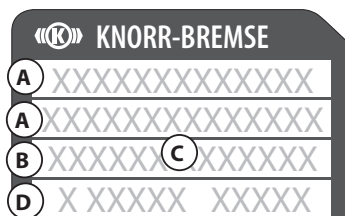
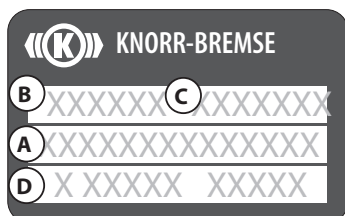
Knorr-Bremse Air Disc Brake identification plate



Example showing Product Number



Identification Plate Variations

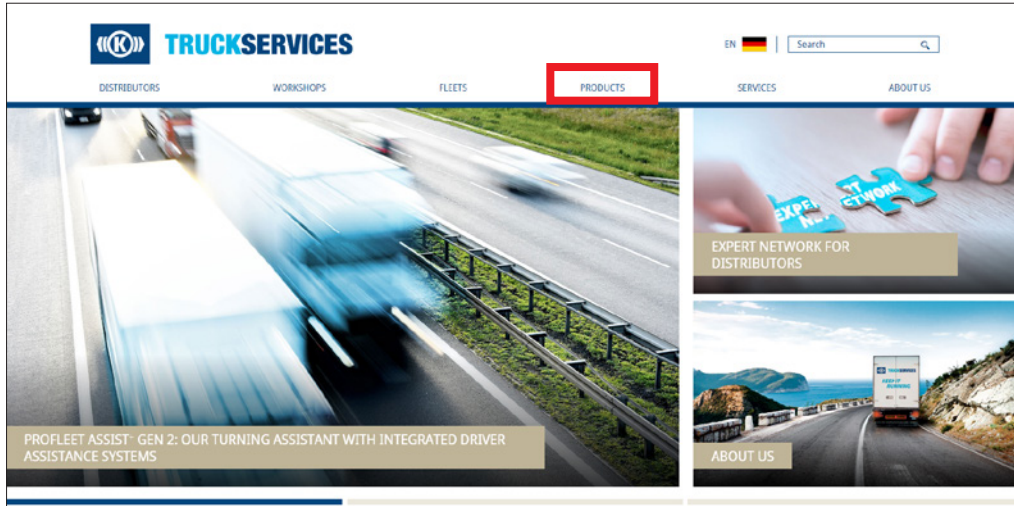


- A = Axle or vehicle manufacturer's identification number
- B = Knorr-Bremse brake type number
- C = Knorr-Bremse part number
- D = Knorr-Bremse date of manufacture

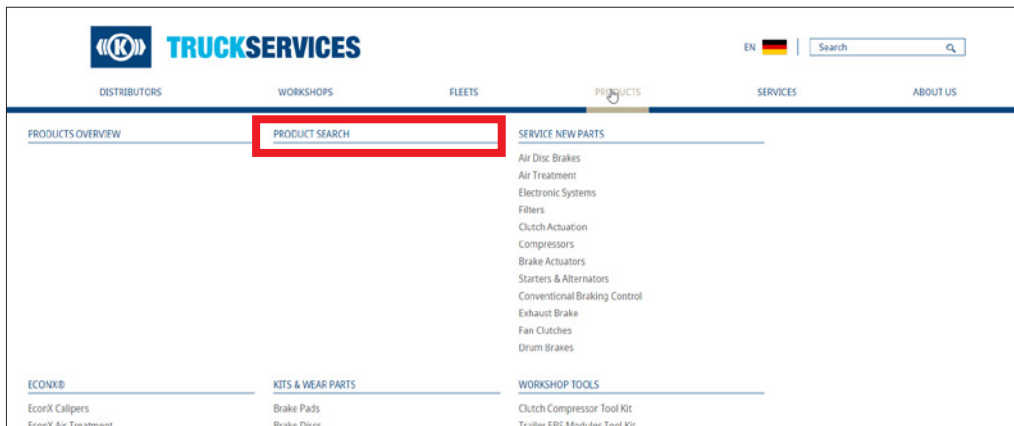
Documentation

On our website truckservices.knorr-bremse.com you will find all spare parts and documents for Knorr-Bremse Disc Brake service:

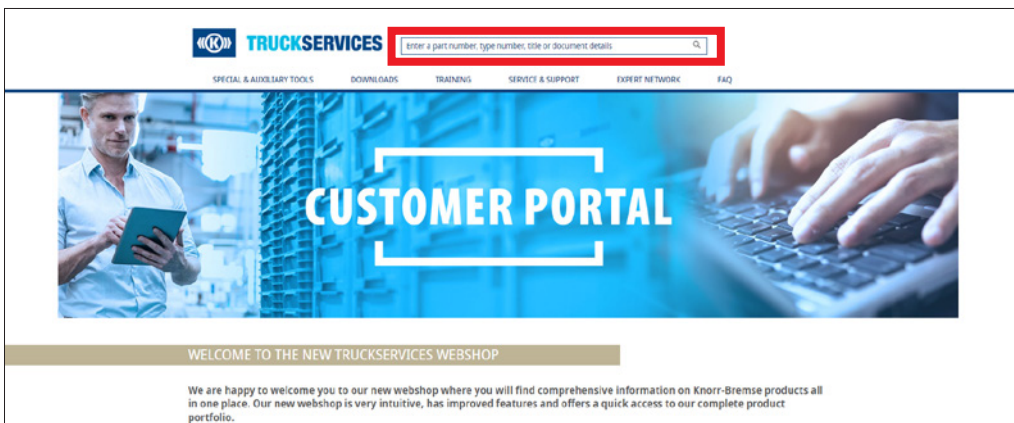
1) Select "PRODUCTS" on the home page:



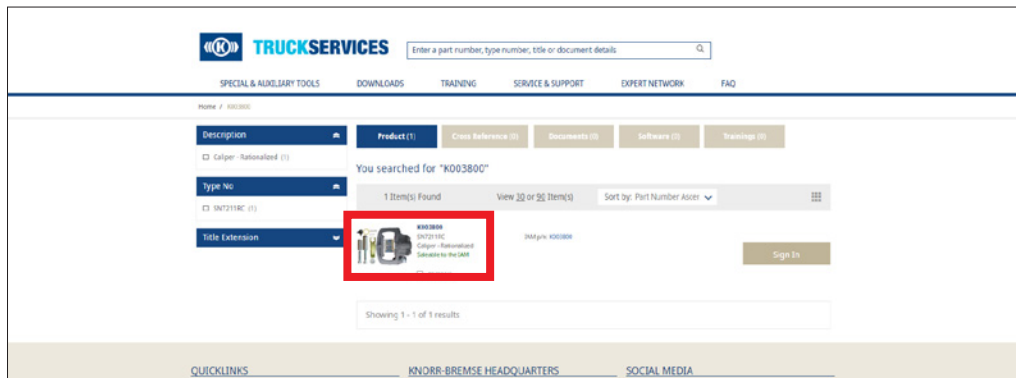
2) From here, click on "PRODUCT SEARCH"...



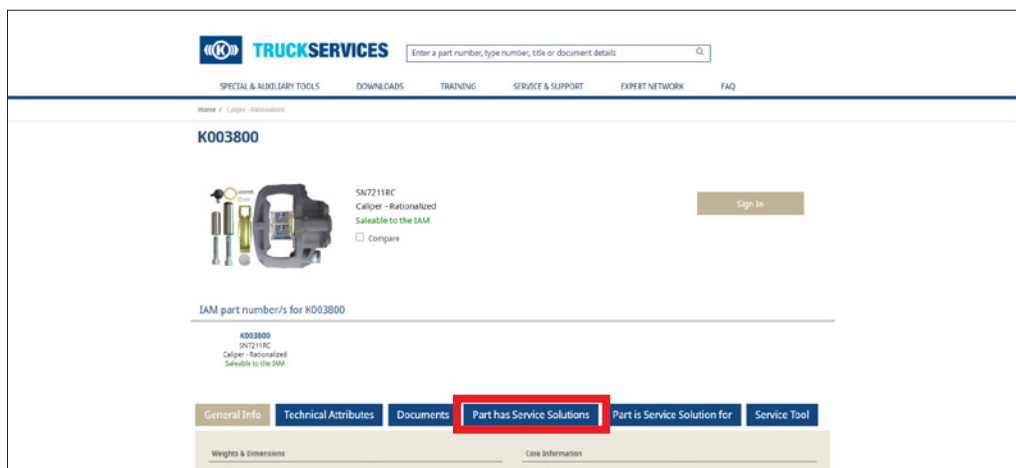
3) From here, enter a search criteria in the field e.g. K003800...



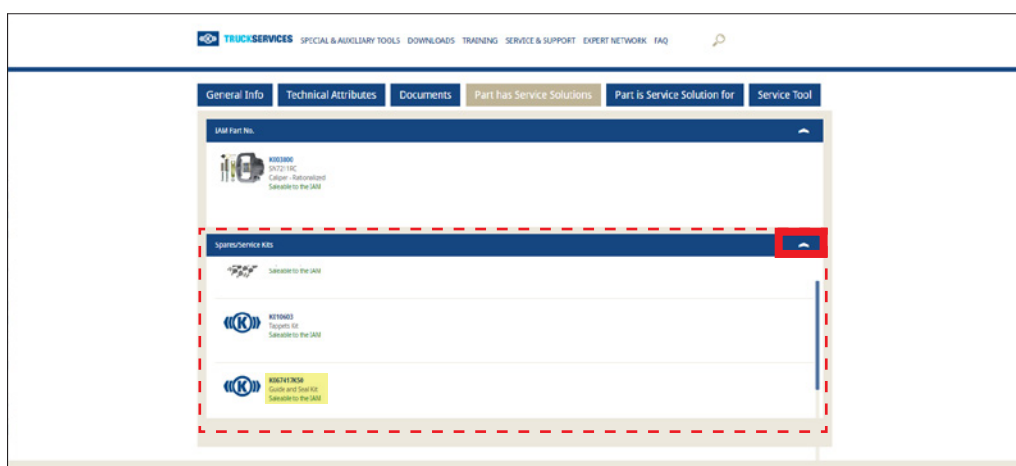
4) On the resulting page click on the product image ...



5) Click "Part has Service Solutions"...



6) Click on the down-arrow to expand the Spares/Service Kits window...



... and scroll the window to see all available kits.
In this example for caliper K003800 the resulting Guide and Seal Kit is K067417K50.

Service Manuals and Tools

The description of the tools required for the maintenance of the Guides and Seals, along with other serviceable parts and detailed service procedures, are all in the respective Service Manual for the specific Brake type:

Brake Type	Service Manual
SB5	C16352 #
SB6	or
SB7	C16352-G #
SN5	Y015044 #
SN6	Y006471 #
SN7	or
SK7	Y006471-G #
SL7	Y081564 #
SM7	or
	Y0811564-G #
ST6	Y378505 #
	Y173241 #
ST7	or
	Y173241-G #
SyD7	Y416977 #
SyT7	Y418754 #



= see website for the latest revision
G = uses Tool Case kit K158880K50

KEEP IT RUNNING

Up-to-date information on our products can be found on our website truckservices.knorr-bremse.com



TRUCKSERVICES

Knorr-Bremse Systems for Commercial Vehicles

Moosacher Strasse 80 | 80809 Munich | Germany

Tel: +49 89 3547-0

Fax: +49 89 3547-2767

truckservices.knorr-bremse.com

Note

All information is subject to change. A printed version of this document may therefore not correspond to the latest revision. To obtain the latest version, please visit our website truckservices.knorr-bremse.com or contact a Knorr-Bremse representative in your area.

If service work is carried out on a vehicle based on information provided herein, it is the responsibility of the workshop to ensure the vehicle is fully tested and in full functional order before the vehicle is returned into service. Knorr-Bremse accepts no liability for problems caused as a result of appropriate tests not being carried out.

Copyright © Knorr-Bremse AG

All rights reserved, including industrial property rights applications. Knorr-Bremse AG retains any power of disposal, such as for copying and transferring.

Disclaimer

The information contained herein is intended for the exclusive use of trained persons within the commercial vehicle industry, and must not be passed on to any third party. All recommendations regarding products and their servicing or usage are with reference to Knorr-Bremse products and should not be considered applicable to products from other manufacturers. This information does not purport to be all-inclusive and no responsibility is assumed as a result of its use. We cannot accept any liability nor offer any guarantee regarding data accuracy, completeness or timeliness. The information does not represent any guarantee or ensured characteristics of the Products or Systems described. No liability can be accepted based on the information, its use, recommendations or advice provided. In no event may we be held liable for any damage or loss except in the case of wilful intent or gross negligence on our part, or if any mandatory legal provisions apply. This disclaimer is an English translation of a German text, which should be referred to for all legal purposes. Any legal disputes arising from the use of this information shall be subject to German law.