



Installation Instructions

AD-2 AIR DRYER INSTALLATION KIT



QUANTITY	DESCRIPTION	KEY
1	AD-2 AIR DRYER	1
1	AIR DRYER MTG PLATE	—

Figure 1 This kit consists of the parts listed above.

**IMPORTANT! PLEASE READ AND FOLLOW
THESE INSTRUCTIONS TO AVOID
PERSONAL INJURY OR DEATH:**

When working on or around a vehicle, the following general precautions should be observed at all times.

1. Park the vehicle on a level surface, apply the parking brakes, and always block the wheels.
2. Stop the engine when working around the vehicle.
3. If the vehicle is equipped with air brakes, make certain to drain the air pressure from all reservoirs before beginning ANY work on the vehicle.
4. Following the vehicle manufacturer's recommended procedures, deactivate the electrical system in manner that removes all electrical power from the vehicle.
5. When working in the engine compartment the engine should be shut off. Where circumstances require that the engine be in operation, **EXTREME CAUTION** should be used to prevent personal injury resulting from contact with moving, rotating, leaking, heated, or electrically charged components.

6. Never connect or disconnect a hose or line containing pressure; it may whip. Never remove a component or plug unless you are certain all system pressure has been depleted.
7. Never exceed recommended pressures and always wear safety glasses.
8. Do not attempt to install, remove, disassemble or assemble a component until you have read and thoroughly understand the recommended procedures. Use only the proper tools and observe all precautions pertaining to use of those tools.
9. Use only genuine Bendix replacement parts, components, and kits. Replacement hardware, tubing, hose, fittings, etc. should be of equivalent size, type, and strength as original equipment and be designed specifically for such applications and systems.
10. Components with stripped threads or damaged parts should be replaced rather than repaired. Repairs requiring machining or welding should not be attempted unless specifically approved and stated by the vehicle or component manufacturer.
11. Prior to returning the vehicle to service, make certain all components and systems are restored to their proper operating condition.

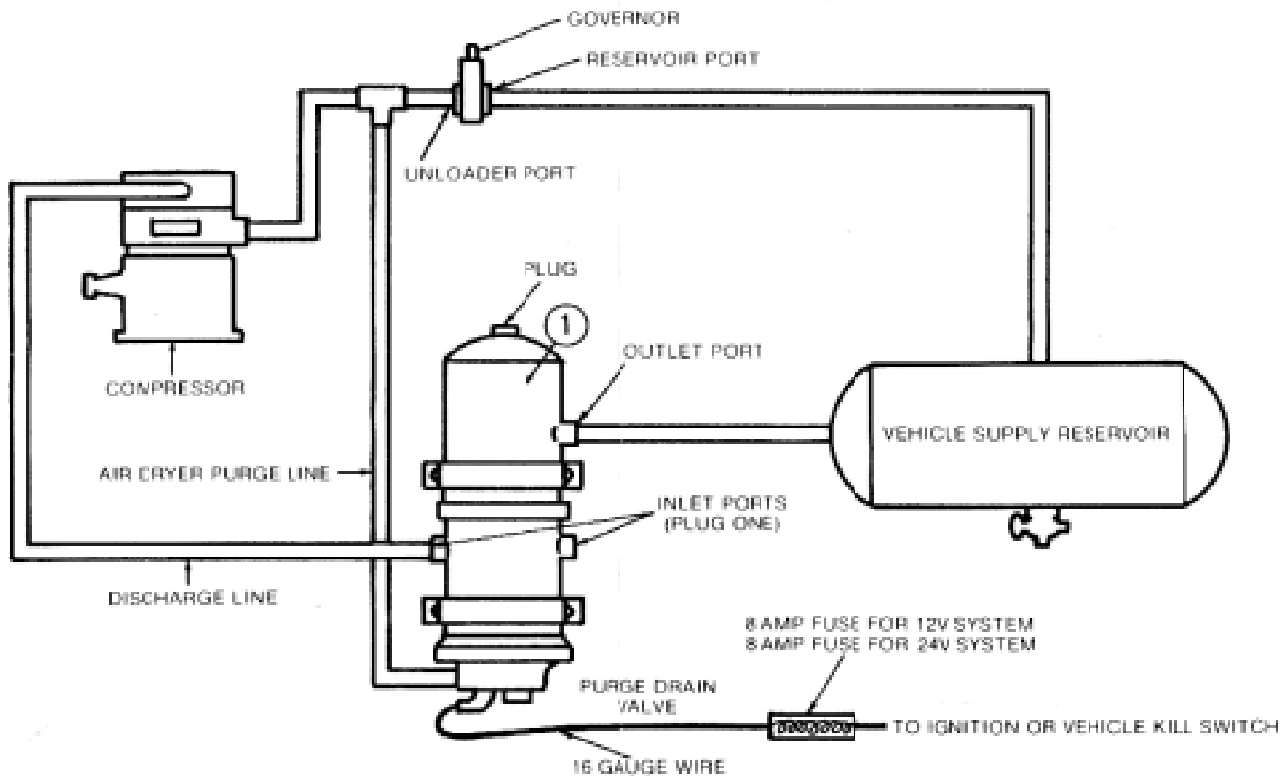
INSTALLATION INSTRUCTIONS

Using mounting hardware provided, mount AD-2 vertically, outside engine compartment, in area of air flow. Provide 8" inches (20cm) clearance below air dryer for servicing.

Use at least 6 ft. of discharge line between compression discharge port and air dryer inlet for a multi-cylinder compressor and 10 ft. of line for a single cylinder compressor. Six feet of discharge line and a 90 cubic inch reservoir can be used in lieu of 10 ft. of discharge line for single cylinder

compressors. Maximum discharge line length for all compressors is 20 feet. The discharge line should slope downward from the compressor to the air dryer inlet to avoid water traps and to allow drainage to the air dryer. Discharge line material may be either high temperature hose or copper tubing.

Bendix compressors require a minimum of 4 foot of copper tubing extending from the discharge port with the balance being either high temperature hose or copper tubing.



Bendix®