

Technical Bulletin



Bulletin No: TCH-20-001

Effective Date: June 1, 2021 Cancels: N/A

Page: 1 of 2

Subject: Bendix® TABS-8™ Advanced Single-Channel Trailer Antilock Braking System (ABS) Module and Installation Test Update

DESCRIPTION

With the latest release of the Bendix® TABS-8™ Advanced Single-Channel Trailer Antilock Braking System (ABS) Module, Bendix has added new features that were not included in the initial release. As a result, the new aftermarket service kit is pre-configured for these features. The kit includes necessary components and installation instructions to make this kit backwards compatible with the initial release of the TABS-8 Advanced Module. Refer to S-1680, *Shorting Cap for Aftermarket Bendix® TABS-8™ Advanced Single-Channel Trailer Antilock Braking System (ABS) Module*, on b2bendix.com. **If the aftermarket service kit is used to replace a TABS-8 Advanced Module that did not previously have Low Pressure Warning Emergency (LPWE), Tire Inflation System (TIS) monitoring, or Pad Wear Sensing (PWS) features, it is imperative to properly install the shorting cap and modify the installation test.** See Figure 1.

Aftermarket Service Kit Components:

- TABS-8 Advanced Electronic Control Unit (ECU): pre-configured with new features and one (1) pre-installed shorting cap on the S-F connector for the PWS input
- One (1) shorting cap (Bendix Part Number K148792): *not* pre-installed on the ECU

Refer to Table 1. If replacing any of the following Original Equipment Manufacturer (OEM) parts, a shorting cap must be added to the S-E connector.



Failure to add a shorting cap to the S-E connector will result in an active LPWE Diagnostic Trouble Code (DTC) that will illuminate the Antilock Braking System (ABS) light. If the shorting cap is not installed, the pins on the S-E connector will be exposed to the environment and will develop corrosion over time. S-E connectors with exposed pins are **not covered by the standard Bendix warranty.**

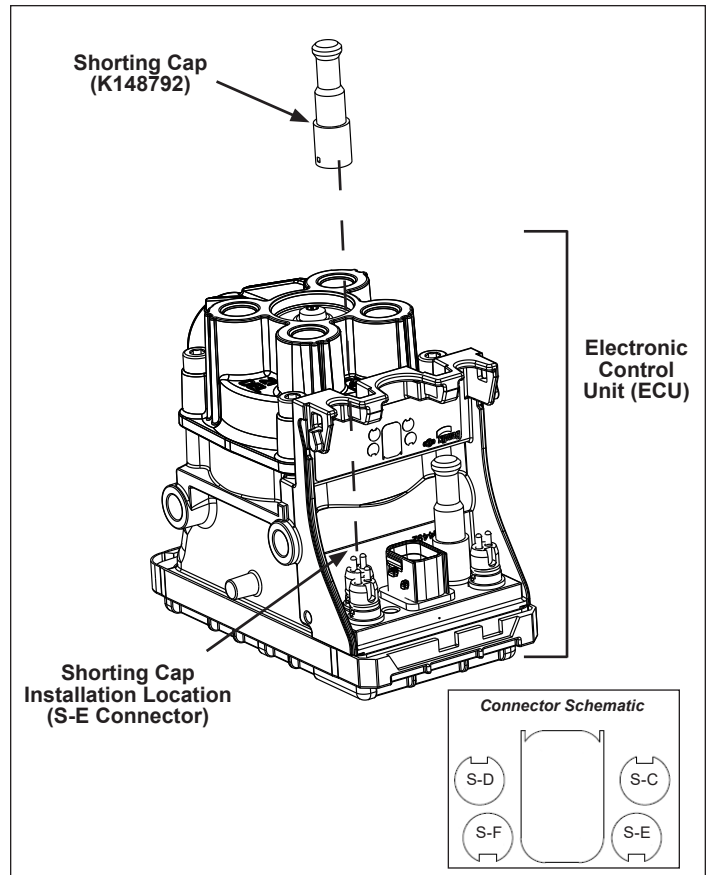


Figure 1 – Bendix® TABS-8™ Advanced Module ECU and Shorting Cap

Bendix OEM Part Number	Bendix Aftermarket Part Number
K184644	K192951
K201522	K201525
K201523	K201526
K201639	K201640
K201643	K201644
K201956	K202072
K202105	K202106
K212749	K212750

Table 1 – OEM and Aftermarket Part Numbers

Continued...

After installing the replacement Bendix® TABS-8™ Advanced Electronic Control Unit (ECU), it is necessary to run the installation test in Bendix® ACom® PRO™ Diagnostic Software to ensure the ECU is functioning correctly. Because the three (3) new features were not present on the initial release of the TABS-8 Advanced ECU, they cannot be checked during the installation test; therefore, these features need to be excluded from the installation test steps. See Figure 2 and perform the following procedure:

1. Before running the installation test, select the *Customize* icon.
2. Deselect *Input_E Test*, *Input_F Test*, and *AUX I/O 1 Test*.
3. Select *OK*.
4. Select *Start/Next* to perform the installation test.

NOTE: ACom PRO Diagnostic Software will store these selections, eliminating the need to re-customize each time ACom PRO is launched.

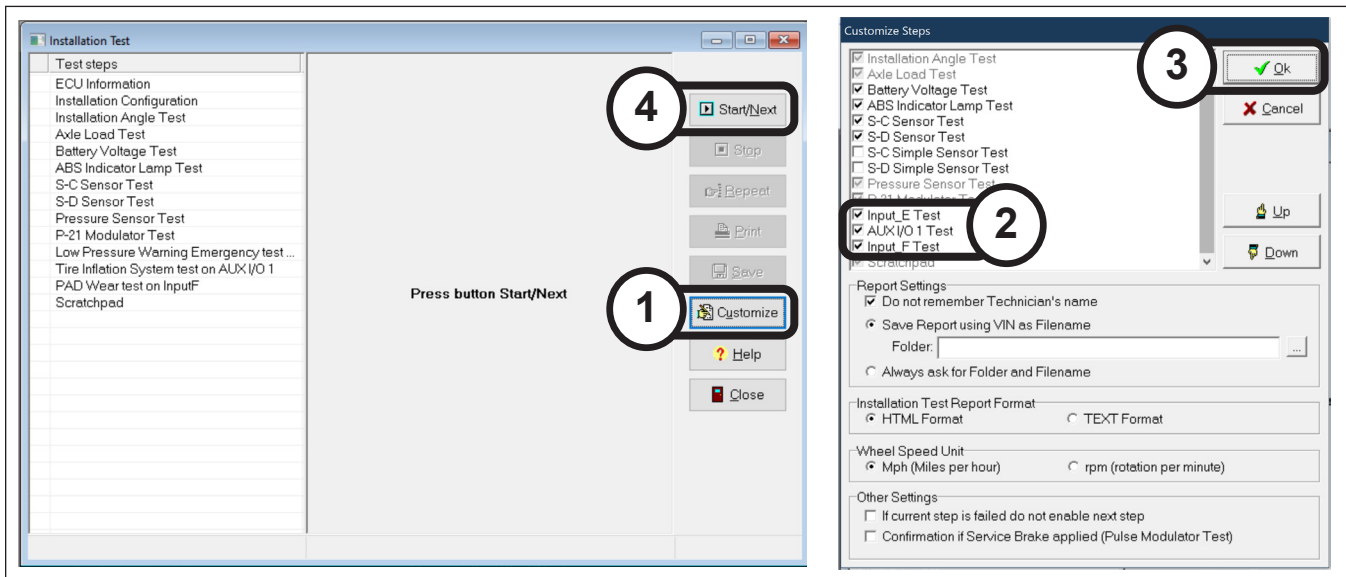


Figure 2 – Installation Test Modifications

ADDITIONAL SUPPORT

For technical support, the Bendix Tech Team is available at 1-800-AIR-BRAKE (1-800-247-2725), option 2, Monday through Thursday, 8:00 a.m. to 6:00 p.m., and Friday, 8:00 a.m. to 5:00 p.m. ET. Follow the instructions in the recorded message. The Bendix Tech Team can also be reached by email at techteam@bendix.com.

Refer to S-1680, *Shorting Cap for Aftermarket Bendix® TABS-8™ Advanced Single-Channel Trailer Antilock Braking System (ABS) Module*, on b2bendix.com.

