

Raise/Lower Valves (with Speed Pulse function)

Function

Raise/Lower Valves are fitted on vehicles with air suspension and allow manual control of air bag volume to raise or lower the vehicle chassis as required.

Some of the SV32.. Raise/Lower Valves are available with a "Speed Pulse" activated function to provide the 'Reset-to-Ride height' function. When the "Speed Pulse" is activated, the valve reverts to the driving position restoring the air bags to the normal running condition and the chassis moves back to the normal ride height to avoid possible suspension damage. This also ensures that the correct air suspension pressure is used to control the load sensing function when braking.

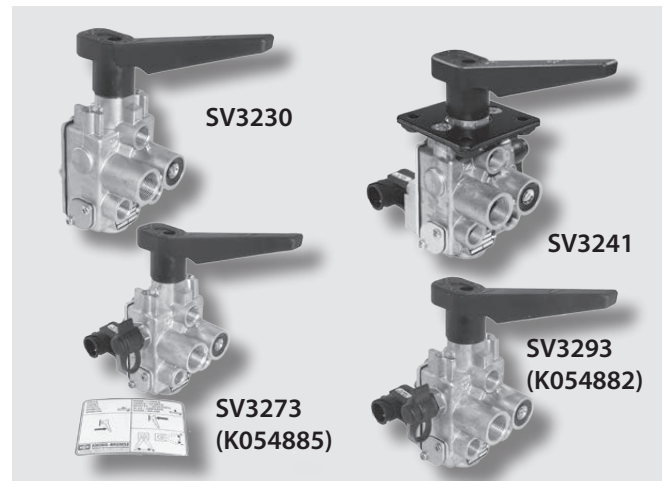
The "Speed Pulse" is provided by a programmable function within the ECU of the ABS or EBS which monitors wheel speed sensor signals.

Versions with the secondary air supply port 13 (e.g. SV3241, SV3242 or SV3293) ensure that the solenoid valve is able to reset the valve when the integrated Height Limitation in a Levelling Valve (e.g. SV1466) has been reached and cut the primary supply of air pressure to the Raise / Lower valve.

Versions without the secondary air supply port 13 (e.g. SV3260 or SV3273) can be used in combination with Levelling Valves without Height Limitation (e.g. SV1460). In this case the maximum height of the suspension is limited only by a mechanical end stop.

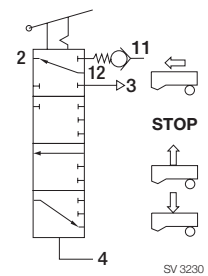
Versions that have a port 4, (e.g. SV3230) incorporate a pneumatically controlled "Speed Pulse" function. When port 4 is pressurised, the chassis automatically returns to its normal ride height. The pressure at port 4 can be controlled by P28 from the TEBS Brake Module or a solenoid valve mounted remotely.

Some valves are fitted with a test connector to permit easy measurement of the air bag pressure.

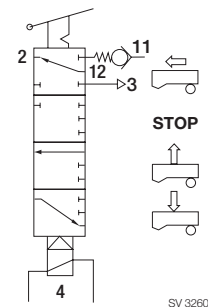


Standard Symbol as DIN ISO 1219

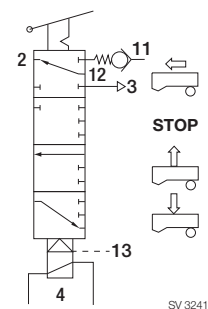
SV3230



SV3260 SV3273



SV3241 SV3242 SV3293



Technical Features

Maximum operating pressure:	13.0 bar
Maximum suspension pressure:	10.0 bar
Minimum reset pressure:	3.5 bar (SV3230)
Nominal solenoid voltage:	24 Volt DC
Operating temperature range:	-40 °C to +80 °C
Weight:	SV3230 0.80 kg approx. SV3241 1.19 kg approx. SV3242 1.14 kg approx. SV3260 0.96 kg approx. SV3273 1.02 kg approx. SV3293 1.02 kg approx.
Test reports:	RWTÜV-report: AL232:OE RWTÜV-report: 112IR 03 001 Rev. 01 DEKRA-report: 200 208 105

Raise/Lower Valves (with Speed Pulse function)

Range Overview

Part No.	Type No.	Test Connector	Port 13	Port 4	Electrical connection Bayonet DIN 72585	Adaptor Plate I140998F	Legend Plate Z006844
I136151	SV3230	-	-	X	-	-	-
K054888 ¹⁾	SV3241	right side	X	-	X	X	-
K054887 ¹⁾	SV3242	-	X	-	X	X	-
K054886 ¹⁾	SV3260	-	-	-	X	-	-
K054884 ¹⁾	SV3273	left side	-	-	X	-	-
K054885 ¹⁾²⁾		left side	-	-	X	-	X
K054882 ¹⁾	SV3293	left side	X	-	X	-	-
K054883 ¹⁾³⁾		left side	X	-	X	-	X

1) The part number of the valve will carry a suffix "N00" which defines that it is supplied without packaging.

2) SV3273-K054885 replaces SV3273-K002019.

3) SV3293-K054883 replaces SV3293-K002020.

Service Parts:

Lever and screw:	I136226004	
Tightening torque:	4 Nm	
Solenoid Kit:	K016334K50	(for SV3241-K054888, SV3242-K054887, SV3260-K054886, SV3273-K054884; K054885 and SV3293-K054882; K054883)

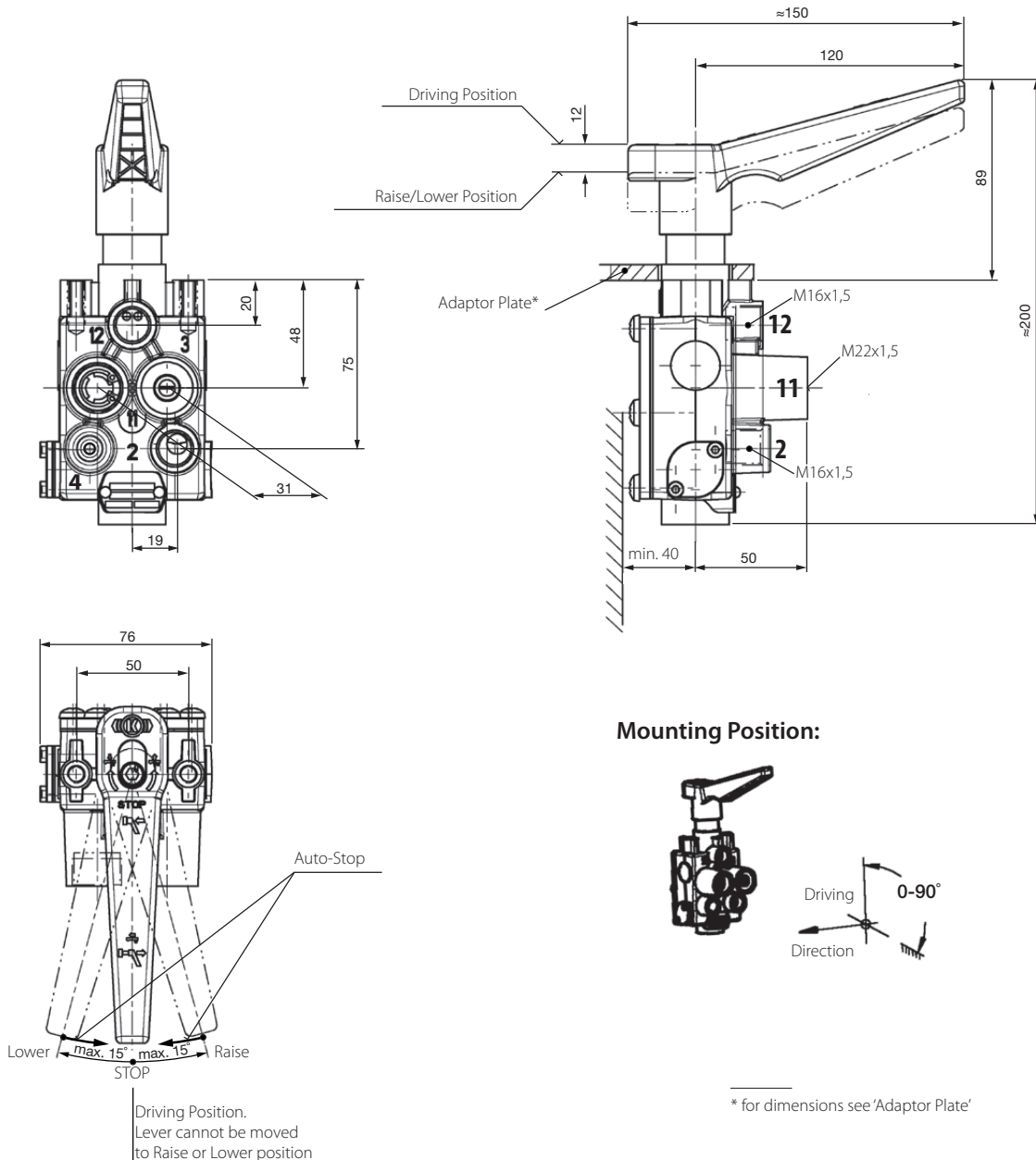
Pneumatic Connections

Port	Thread	Connection	Max. torque
11	M22x1.5	Supply (from air reservoir or levelling valve port 23)	60 Nm
12	M16x1.5	From levelling valve port 21	45 Nm
13	M16x1.5	From air reservoir	45 Nm
2	M16x1.5	Delivery to air bags	45 Nm
3	-	Exhaust	-
4	M16x1.5	From Solenoid Valve or TEBS Brake Module P28	45 Nm

Raise/Lower Valves (with Speed Pulse function)

Dimensions

SV3230

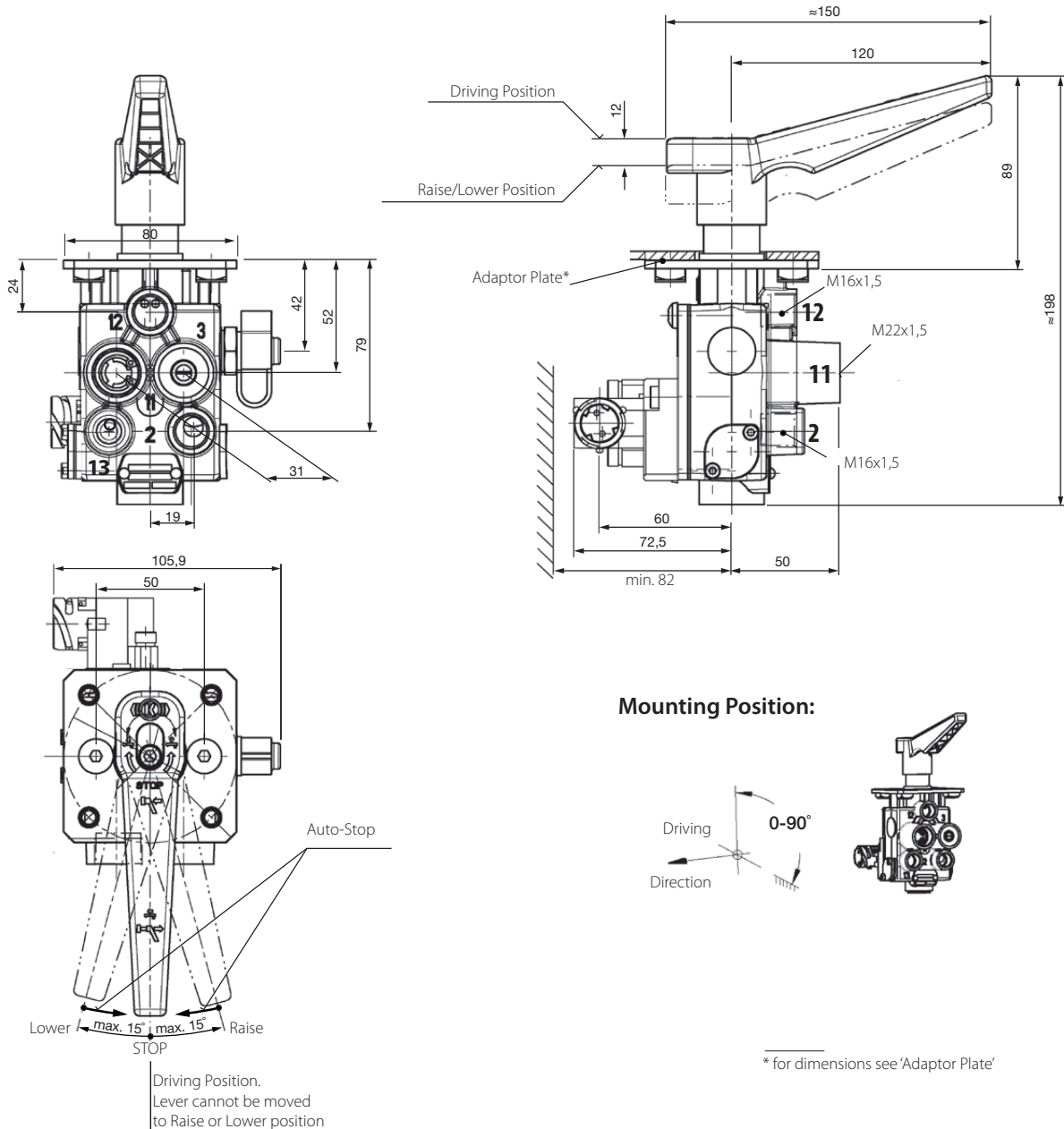


Ports:

- 11 = Supply from Reservoir or Air Suspension Levelling Valve port 23
- 12 = Supply from Air Suspension Levelling Valve port 21
- 2 = Delivery to Air Suspension Bellows
- 3 = Exhaust
- 4 = Auto-reset

Raise/Lower Valves (with Speed Pulse function)

SV3241



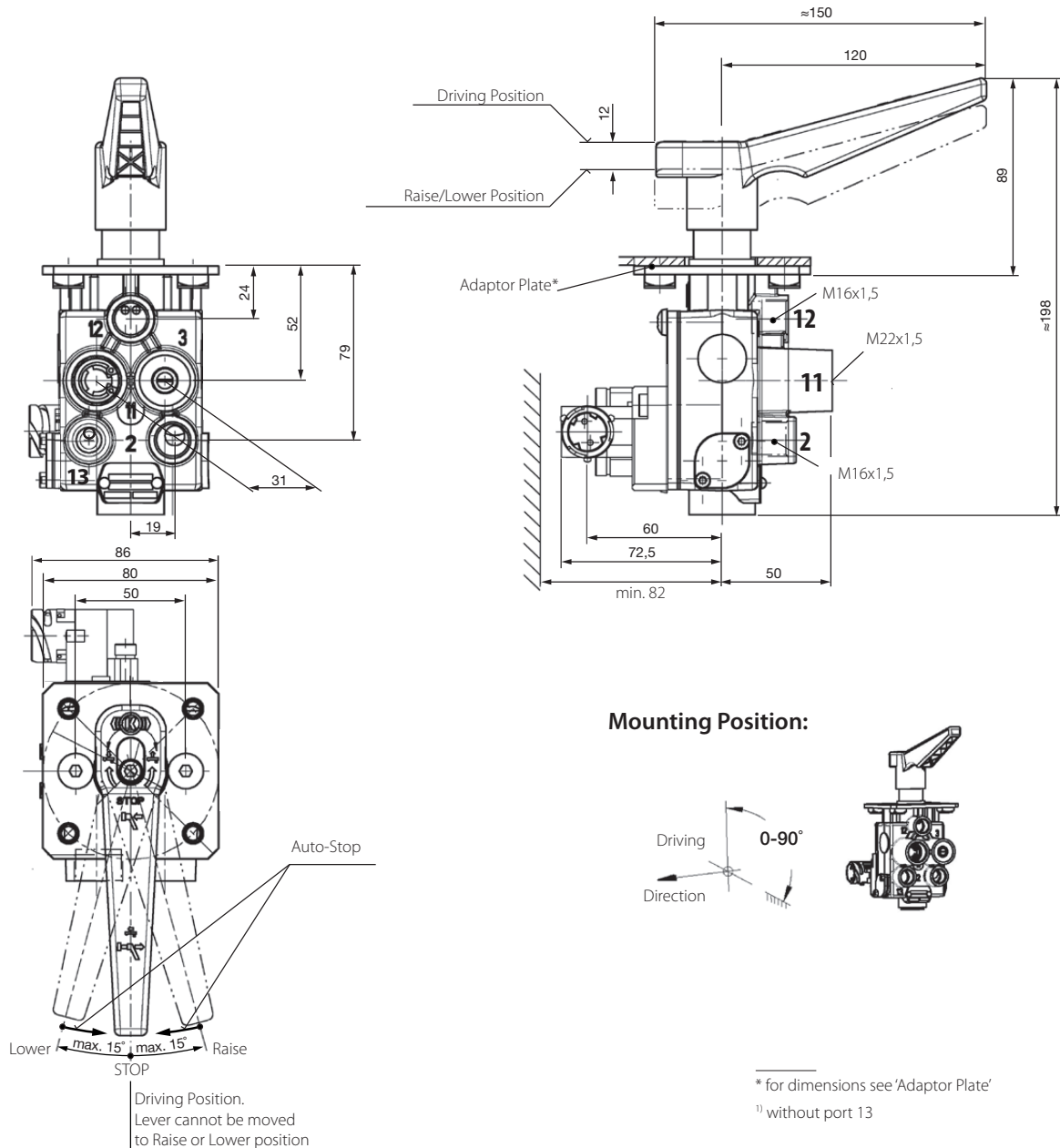
* for dimensions see 'Adaptor Plate'

Ports:

- 11 = Supply from Reservoir or Air Suspension Levelling Valve port 23
- 12 = Supply from Air Suspension Levelling Valve port 21
- 13 = Supply from Reservoir
- 2 = Delivery to Air Suspension Bellows
- 3 = Exhaust

Raise/Lower Valves (with Speed Pulse function)

SV3242
SV3260 ¹⁾

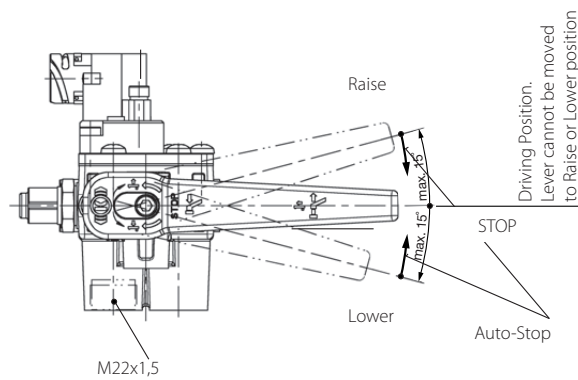
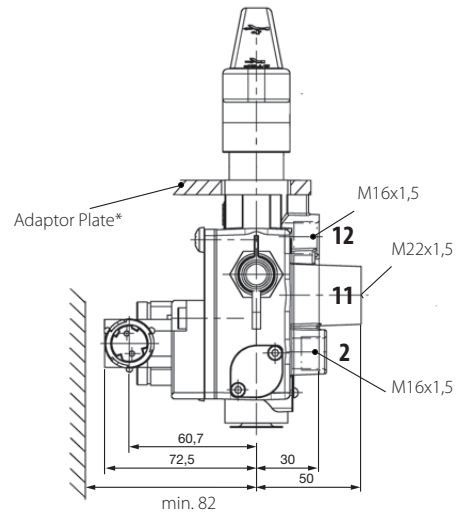
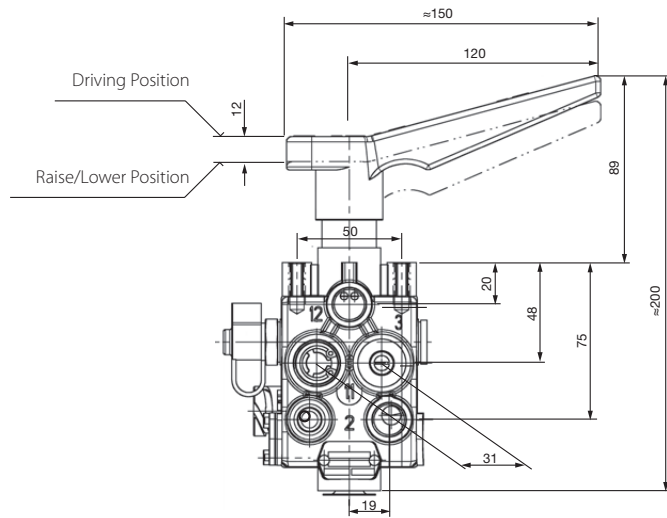


Ports:

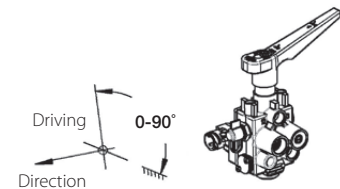
- 11 = Supply from Reservoir or Air Suspension Levelling Valve port 23
- 12 = Supply from Air Suspension Levelling Valve port 21
- 13 = Supply from Reservoir
- 2 = Delivery to Air Suspension Bellows
- 3 = Exhaust

Raise/Lower Valves (with Speed Pulse function)

SV3273



Mounting Position:



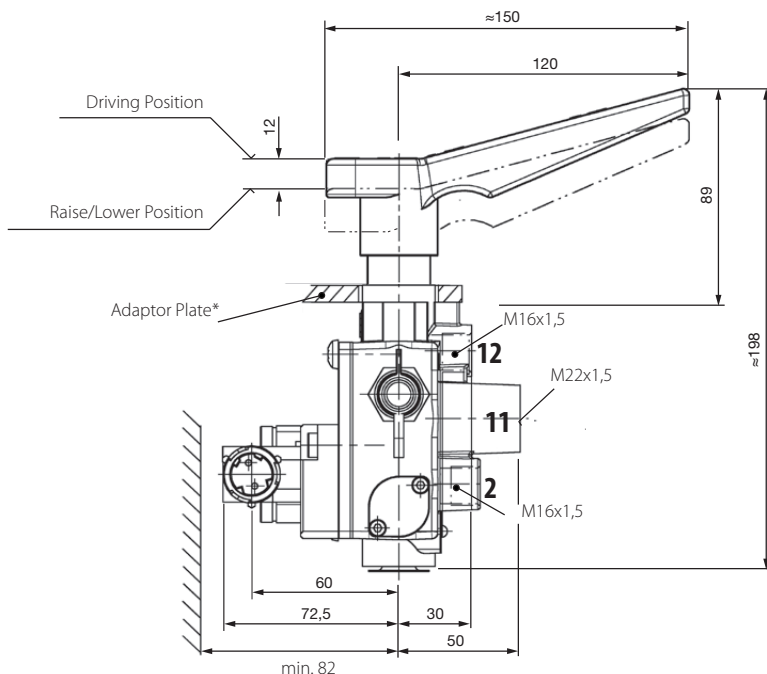
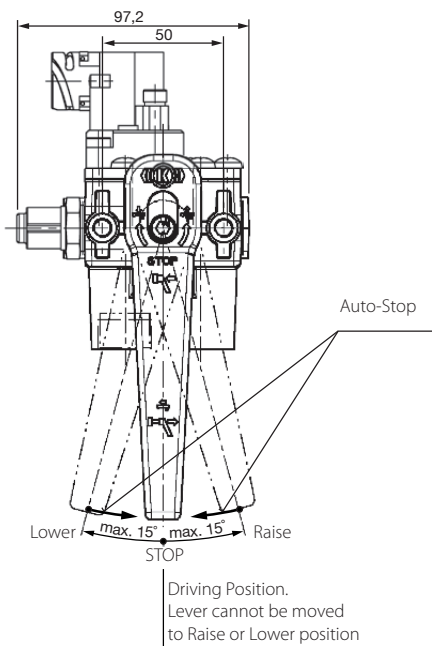
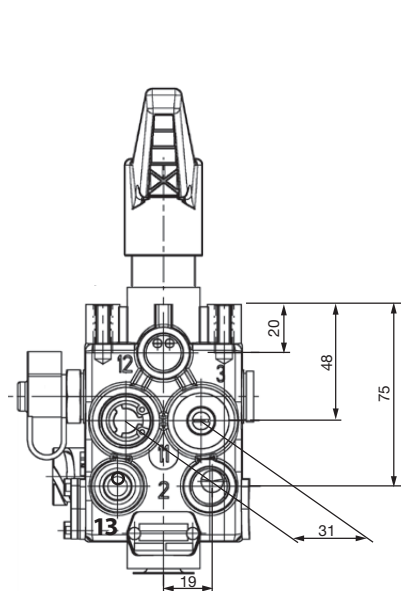
* for dimensions see 'Adaptor Plate'

Ports:

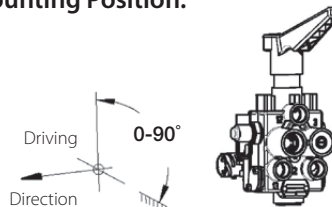
- 11 = Supply from Reservoir or Air Suspension Levelling Valve port 23
- 12 = Supply from Air Suspension Levelling Valve port 21
- 2 = Delivery to Air Suspension Bellows
- 3 = Exhaust

Raise/Lower Valves (with Speed Pulse function)

SV3293



Mounting Position:



* for dimensions see 'Adaptor Plate'

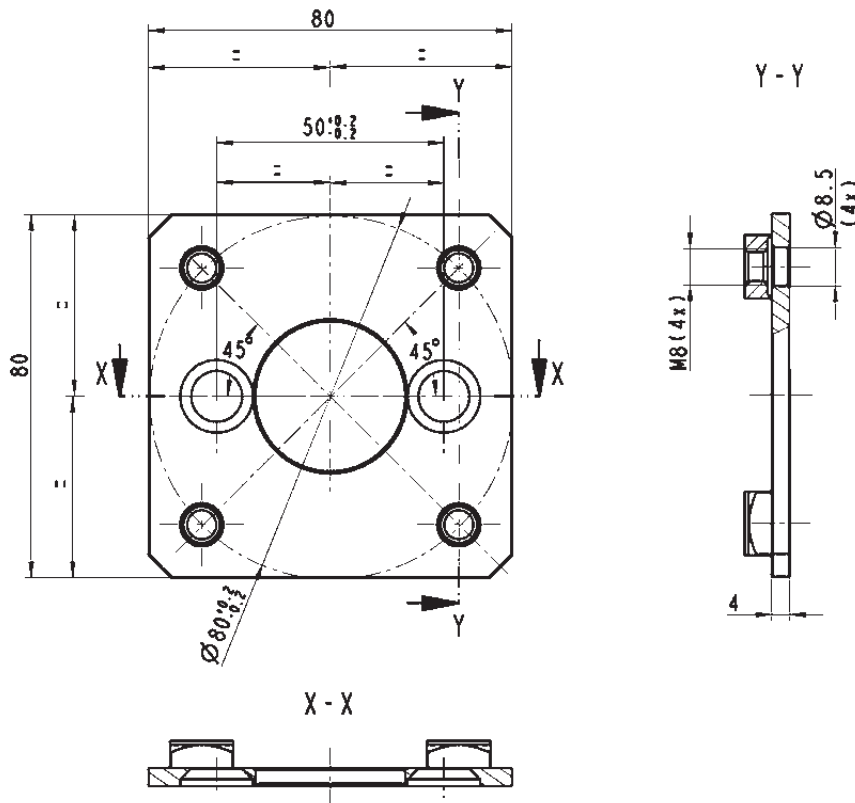
Ports:

- 11 = Supply from Reservoir or Air Suspension Levelling Valve port 23
- 12 = Supply from Air Suspension Levelling Valve port 21
- 13 = Supply from Reservoir
- 2 = Delivery to Air Suspension Bellows
- 3 = Exhaust

Raise/Lower Valves (with Speed Pulse function)

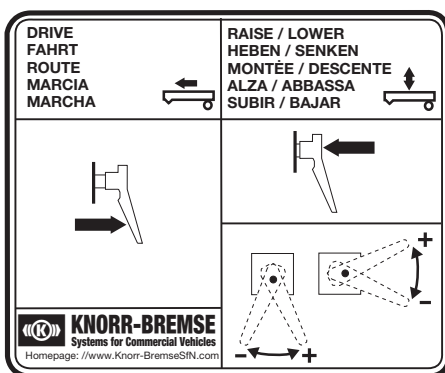
Adaptor Plate

Part No. II40998F



Legend Plate

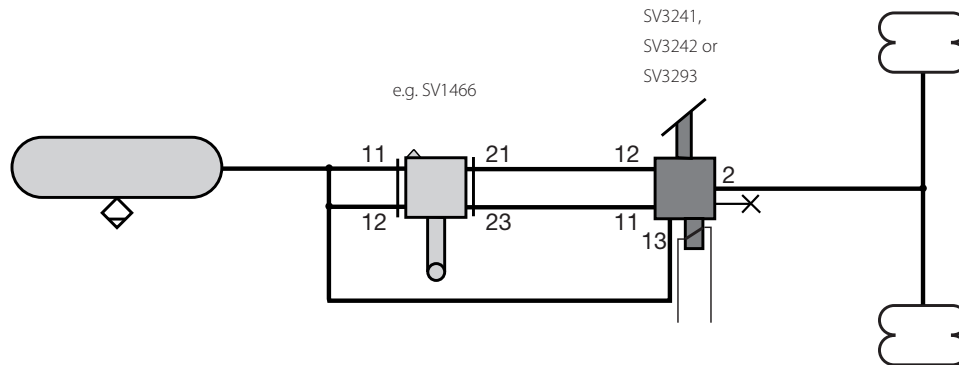
Part No. Z006844



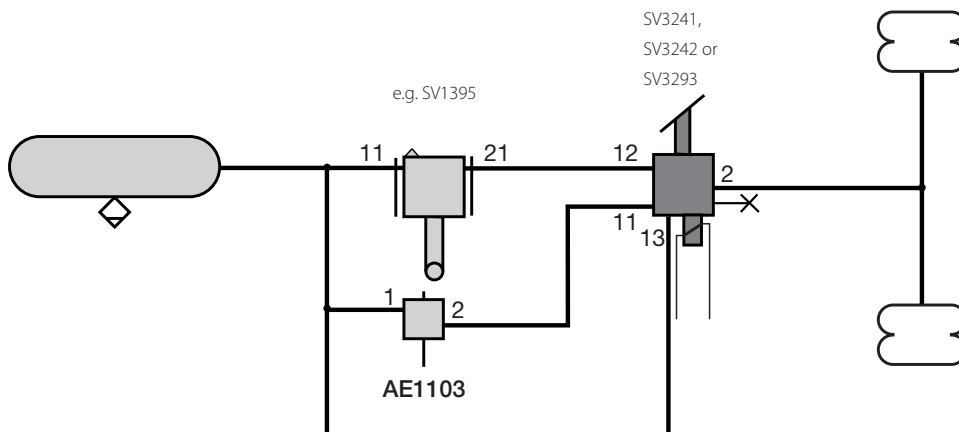
Raise/Lower Valves (with Speed Pulse function)

Installation examples

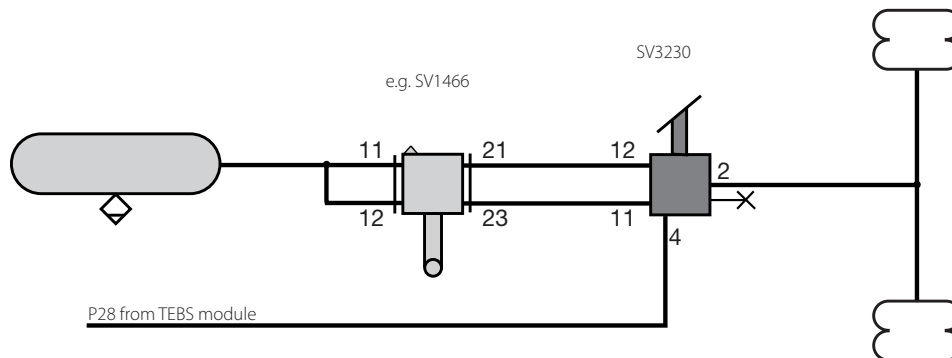
Air suspension system with Levelling Valve with height limitation and Raise/Lower Valve with electrical reset



Air suspension system with Levelling Valve plus separate Height Limiting Valve and Raise/Lower Valve with electrical reset

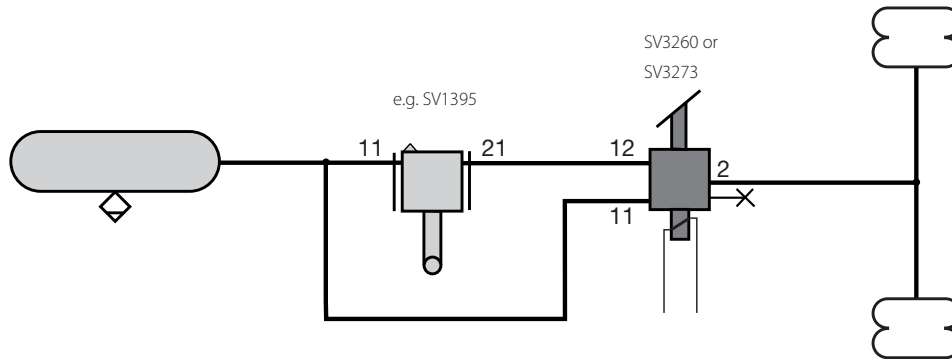


Air suspension system with Levelling Valve with height limitation and Raise/Lower Valve with pneumatic reset from TEBS module



Raise/Lower Valves (with Speed Pulse function)

Air suspension system with no height limitation and Raise/Lower Valve with electrical reset



Revision Details

Rev. 001	April 2019	New Layout



Knorr-Bremse Group

Knorr-Bremse Systems for Commercial Vehicles

Moosacher Strasse 80 | 80809 Munich | Germany
Tel: +49 89 3547-0 | Fax: +49 89 3547-2767
WWW.KNORR-BREMSECVS.COM

Note

All information is subject to change. A printed version of this document may therefore not correspond to the latest revision. To obtain the latest version, please visit our website www.knorr-bremseCVS.com or contact a Knorr-Bremse representative in your area.

If service work is carried out on a vehicle based on information provided herein, it is the responsibility of the workshop to ensure the vehicle is fully tested and in full functional order before the vehicle is returned into service. Knorr-Bremse accepts no liability for problems caused as a result of appropriate tests not being carried out.

Copyright © Knorr-Bremse AG

All rights reserved, including industrial property rights applications. Knorr-Bremse AG retains any power of disposal, such as for copying and transferring.

Up-to-date information on our products can be found on our website www.knorr-bremseCVS.com

Disclaimer

The information contained herein is intended for the exclusive use of trained persons within the commercial vehicle industry, and must not be passed on to any third party. All recommendations regarding products and their servicing or usage are with reference to Knorr-Bremse products and should not be considered applicable to products from other manufacturers.

This information does not purport to be all-inclusive and no responsibility is assumed as a result of its use. We cannot accept any liability nor offer any guarantee regarding data accuracy, completeness or timeliness.

The information does not represent any guarantee or ensured characteristics of the Products or Systems described. No liability can be accepted based on the information, its use, recommendations or advice provided. In no event may we be held liable for any damage or loss except in the case of wilful intent or gross negligence on our part, or if any mandatory legal provisions apply.

This disclaimer is an English translation of a German text, which should be referred to for all legal purposes. Any legal disputes arising from the use of this information shall be subject to German law.