

Park/Shunt Valve with Integrated Charging Valve

Function

The **Park/Shunt Valve AE437**. enables the manual release and application of the trailer brakes. This variant is designed to be used with the TEBS G2.1 and G2.2 Brake Module which incorporates the automatic brake function to improve its response time.

The Park/Shunt Valve AE437. is built with a plastic housing and equipped with an integral charging valve and push-to-connect fittings.

The plastic housing protects against corrosion and ensures a long life.

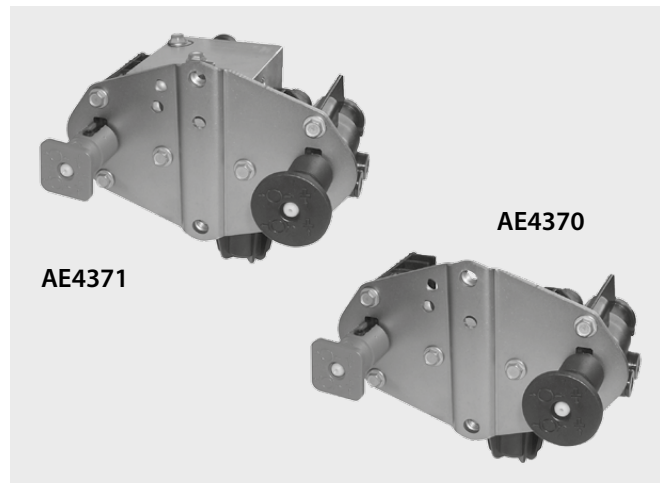
The charging valve ensures the priority charging of the brake reservoir before supplying pressure to the auxiliary circuit (air suspension). In the event of pressure loss in the brake system or auxiliary circuit the valve will protect the pressure in the intact circuit.

The Park/Shunt Valve AE4370 for semi and centreaxle trailers has the following functionality:

- Manual control of the parking brake (red knob)
- Manoeuvring (shunt) function for use when the trailer is uncoupled (black knob)

The Park/Shunt Valve AE4371 for drawbar trailers has an integral front axle valve. This valve ensures that the service brakes on the front axle of a drawbar trailer are applied when the supply line is disconnected.

By pulling out the red knob and pushing in the black knob, the brakes on the front axle will be released for coupling the drawbar trailer to the truck.

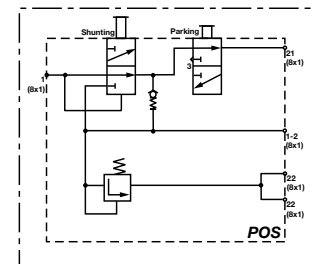


AE4371

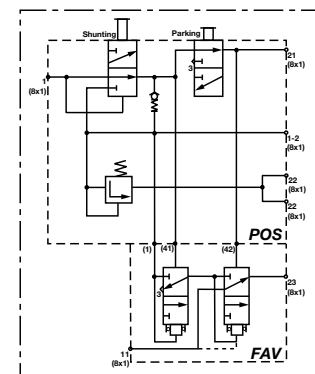
AE4370

Standard Symbol as DIN ISO 1219

AE4370



AE4371



Technical Features

Maximum operating pressure:	10.0 bar	
Operating temperature range:	-40 °C to +80 °C	
Weight:	AE4370	0.7 kg approx.
	AE4371	1.0 kg approx.

Charging Valve:

Opening Pressure = 6.0 bar

Closing Pressure = 5.2 bar

Park/Shunt Valve with Integrated Charging Valve

Range Overview

Part No.	Type No.	Integral Charging Valve	Integral Front Axle Valve	Number of Connections	Push-to-Connect Fittings supplied
K141700 ¹⁾	AE4370	Yes	No	5	Yes
K141699 ¹⁾	AE4371		Yes	7	

Information Plate: K056570 ¹⁾

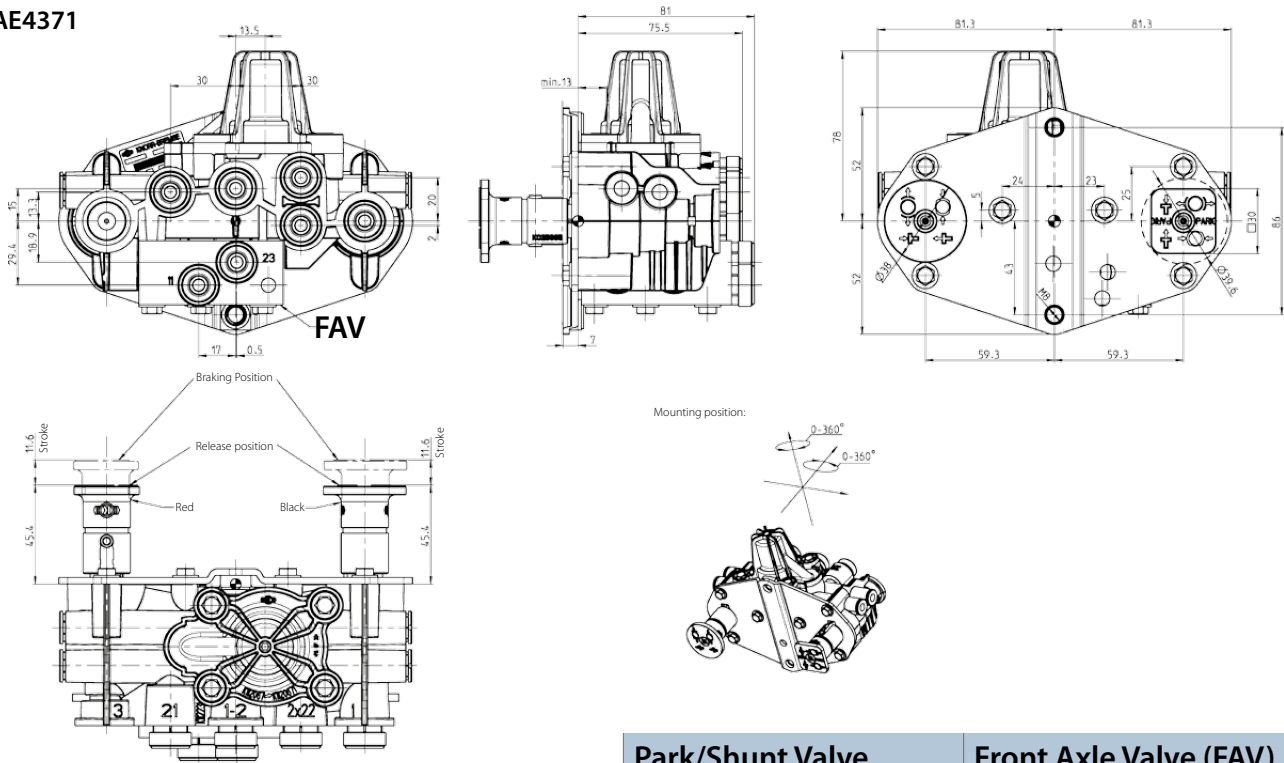
¹⁾ The part number will carry a suffix, "N##" which defines the packaging requirements of different market sectors, e.g. N00, N50.
Example: K141700N00 - is supplied without packaging.

Port	Valve		Connection	Push-to-Connect Fittings (to suit pipe size)
	AE4370	AE4371		
1	X	X	Supply (from red line)	8 x 1
1-2	X	X	Supply/Delivery (from/to brake reservoir)	
11		X	Supply (from yellow line)	
21	X	X	Delivery (to TEBS Brake Module)	
22	X	X	Delivery (to auxiliaries)	
23		X	Delivery (to front axle modulator)	
3	X	X	Exhaust	—

Park/Shunt Valve with Integrated Charging Valve

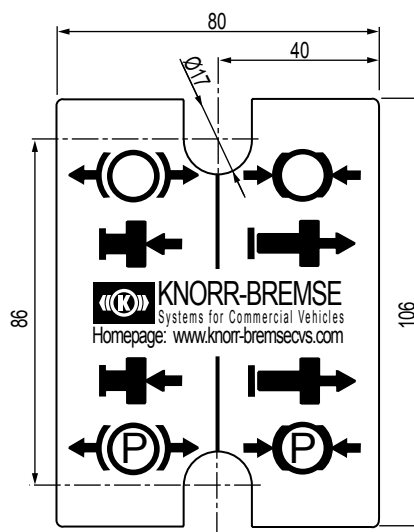
Dimensions

AE4370
AE4371



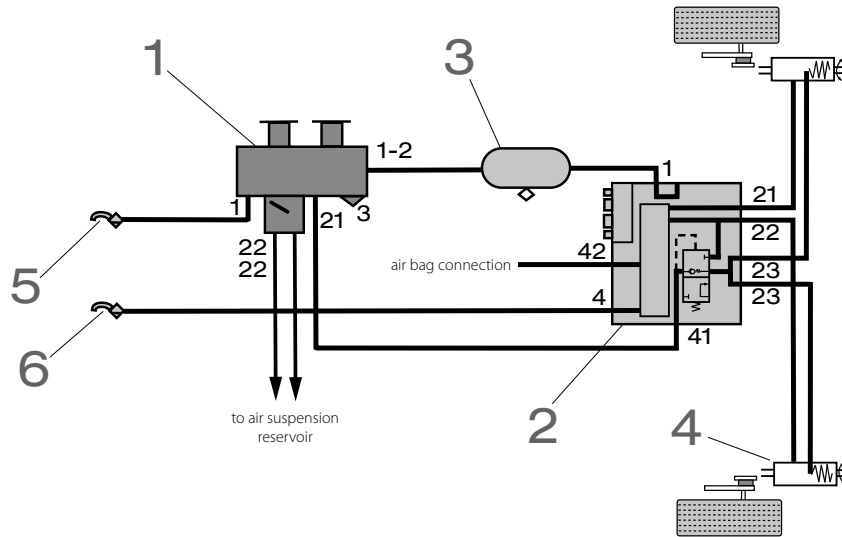
Park/Shunt Valve	Front Axle Valve (FAV)
AE4370	No
AE4371	Yes

K056570

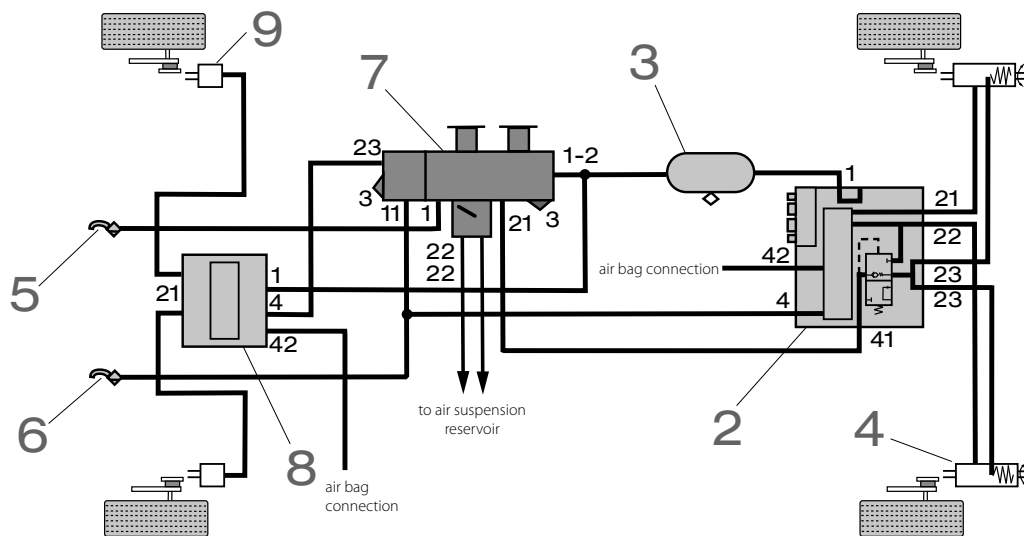


Park/Shunt Valve with Integrated Charging Valve

Installation example AE4370 with TEBS G2.1



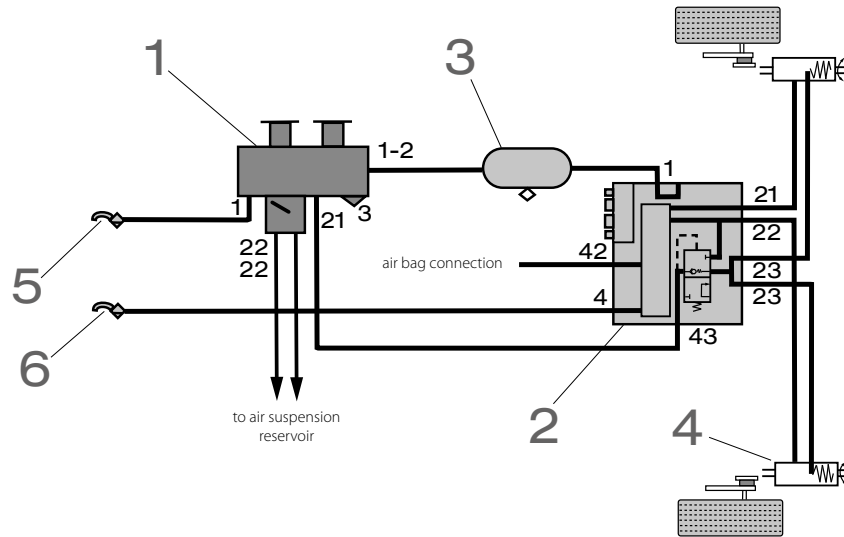
Installation example AE4371 with TEBS G2.1 and TEPM-P



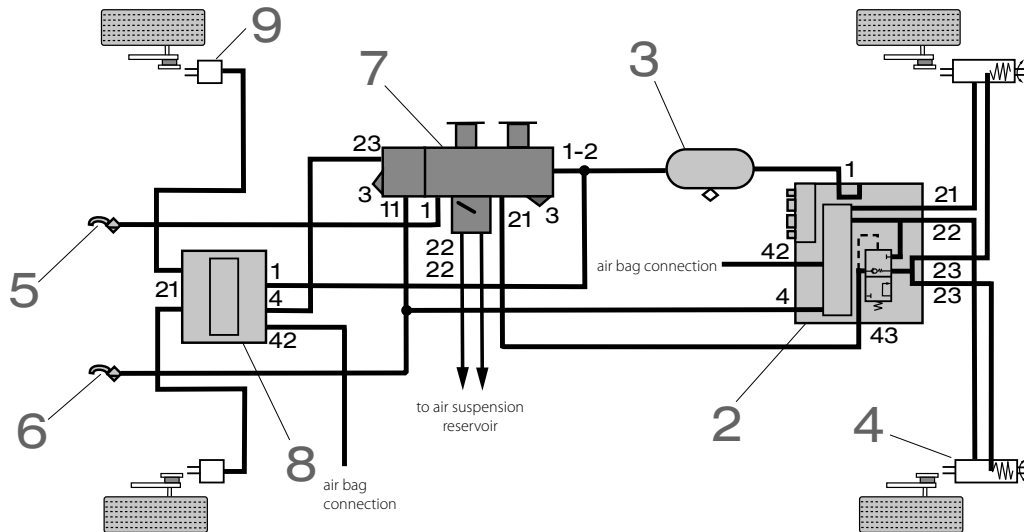
Item	Description	Item	Description
1	Park/Shunt Valve with integrated charging valve	6	Coupling head with filter (Control) - Yellow
2	TEBS G2.1 brake module	7	Park/Shunt Valve with integrated charging valve and integral front axle valve
3	Brake reservoir	8	Trailer Electro-Pneumatic Module Premium (TEPM-P)
4	Spring brake actuator	9	Brake chamber
5	Coupling head with filter (Supply) - Red		

Park/Shunt Valve with Integrated Charging Valve

Installation example AE4370 with TEBS G2.2



Installation example AE4371 with TEBS G2.1 and TEPM-P



Item	Description	Item	Description
1	Park/Shunt Valve with integrated charging valve	6	Coupling head with filter (Control) - Yellow
2	TEBS G2.2 brake module	7	Park/Shunt Valve with integrated charging valve and integral front axle valve
3	Brake reservoir	8	Trailer Electro-Pneumatic Module Premium (TEPM-P)
4	Spring brake actuator	9	Brake chamber
5	Coupling head with filter (Supply) - Red		

Park/Shunt Valve with Integrated Charging Valve

Revision Details		
Rev. 003	April 2019	New Layout



Knorr-Bremse Group

Knorr-Bremse Systems for Commercial Vehicles

Moosacher Strasse 80 | 80809 Munich | Germany
Tel: +49 89 3547-0 | Fax: +49 89 3547-2767
WWW.KNORR-BREMSECVS.COM

Note

All information is subject to change. A printed version of this document may therefore not correspond to the latest revision. To obtain the latest version, please visit our website www.knorr-bremseCVS.com or contact a Knorr-Bremse representative in your area.

If service work is carried out on a vehicle based on information provided herein, it is the responsibility of the workshop to ensure the vehicle is fully tested and in full functional order before the vehicle is returned into service. Knorr-Bremse accepts no liability for problems caused as a result of appropriate tests not being carried out.

Copyright © Knorr-Bremse AG

All rights reserved, including industrial property rights applications. Knorr-Bremse AG retains any power of disposal, such as for copying and transferring.

Up-to-date information on our products can be found on our website www.knorr-bremseCVS.com

Disclaimer

The information contained herein is intended for the exclusive use of trained persons within the commercial vehicle industry, and must not be passed on to any third party. All recommendations regarding products and their servicing or usage are with reference to Knorr-Bremse products and should not be considered applicable to products from other manufacturers.

This information does not purport to be all-inclusive and no responsibility is assumed as a result of its use. We cannot accept any liability nor offer any guarantee regarding data accuracy, completeness or timeliness.

The information does not represent any guarantee or ensured characteristics of the Products or Systems described. No liability can be accepted based on the information, its use, recommendations or advice provided. In no event may we be held liable for any damage or loss except in the case of wilful intent or gross negligence on our part, or if any mandatory legal provisions apply.

This disclaimer is an English translation of a German text, which should be referred to for all legal purposes. Any legal disputes arising from the use of this information shall be subject to German law.