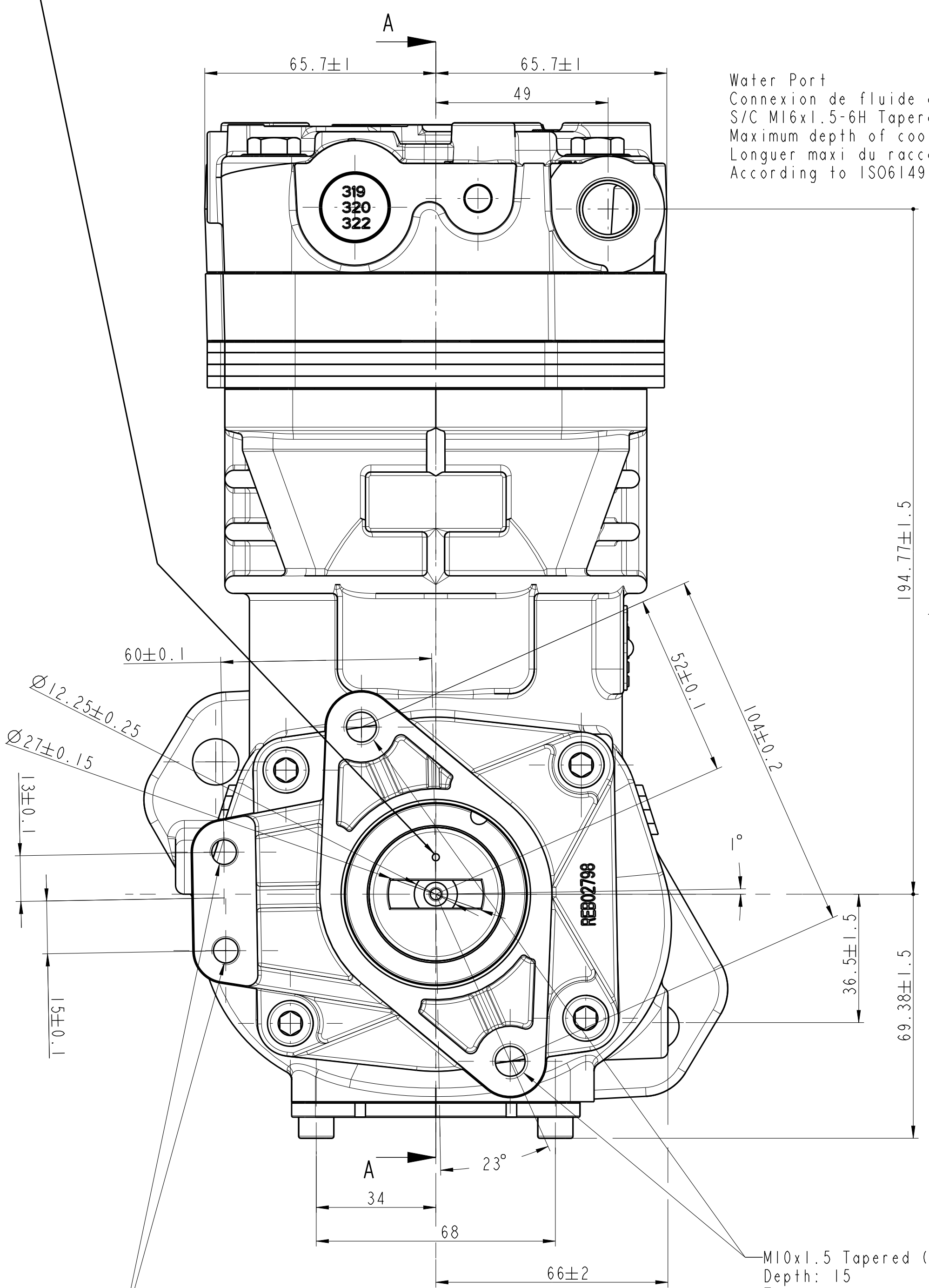


Align markings on crankshaft and the rib of pump support corresponding to the Top Dead Center of the piston.  
Aligner les marquages du vilebrequin et la nervure du support de pompe correspondant au Point Mort Haut du piston.

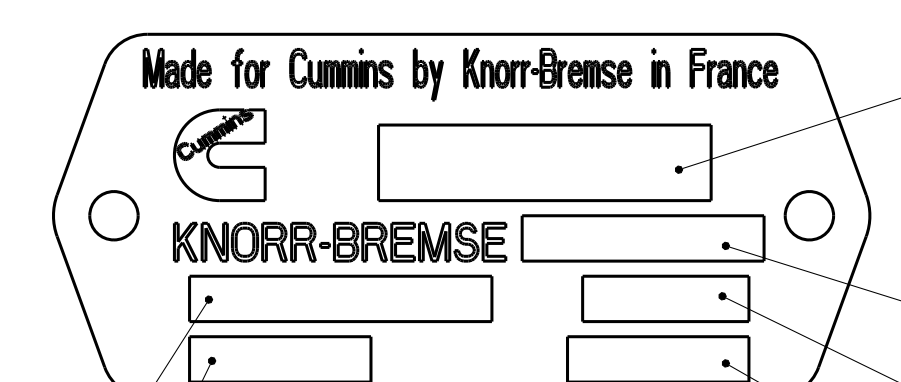


Water Port  
Connexion de fluide de refroidissement  
S/C M16x1.5-6H Tapered -- Depth: 10mm mini.  
Maximum depth of coolant coupling: 10mm  
Longueur maxi du raccord: 10mm  
According to ISO6149 specification

M10x1.5 Tapered (x2) S/C  
Depth: 15  
Tightening torque for 12 mm min engagement: 45±5Nm  
Couple de serrage pour 12 mm min de forage utile: 45±5Nm

M8x1.25-6H Tapered (x2) S/C  
Maximum tightening for 15mm min engagement: 24Nm  
Couple de serrage maxi pour 15 mm min de forage utile: 24Nm

EXEMPLE DE PLAQUE D'IDENTIFICATION  
EXAMPLE OF IDENTIFICATION PLATE  
ECHELLE 2:1  
SCALE 2:1



KNORR-BREMSE reference  
Reference KNORR-BREMSE

Customer part number  
Reference client

Compressor type number  
Numero de type du compresseur

Manufacturing location code  
Code du lieu de production

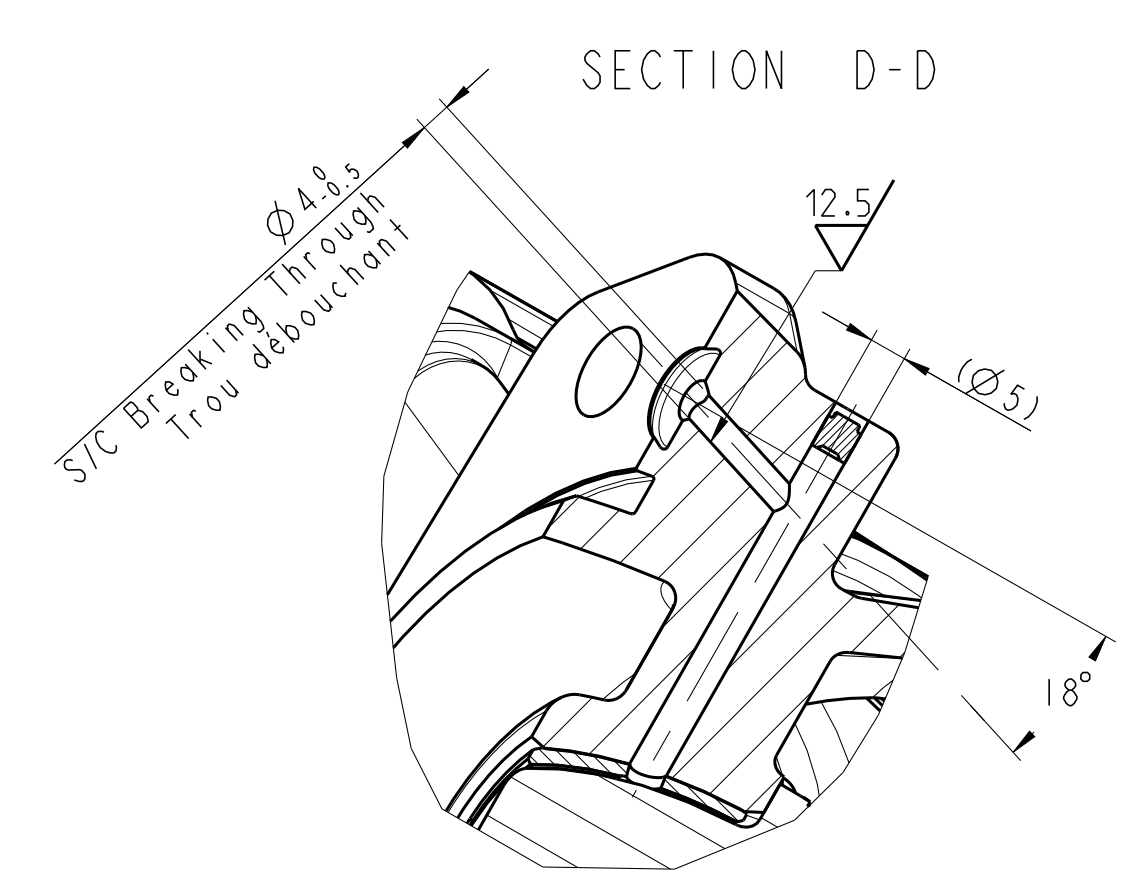
Date code  
Date de fabrication

Serial number  
Numero de serie

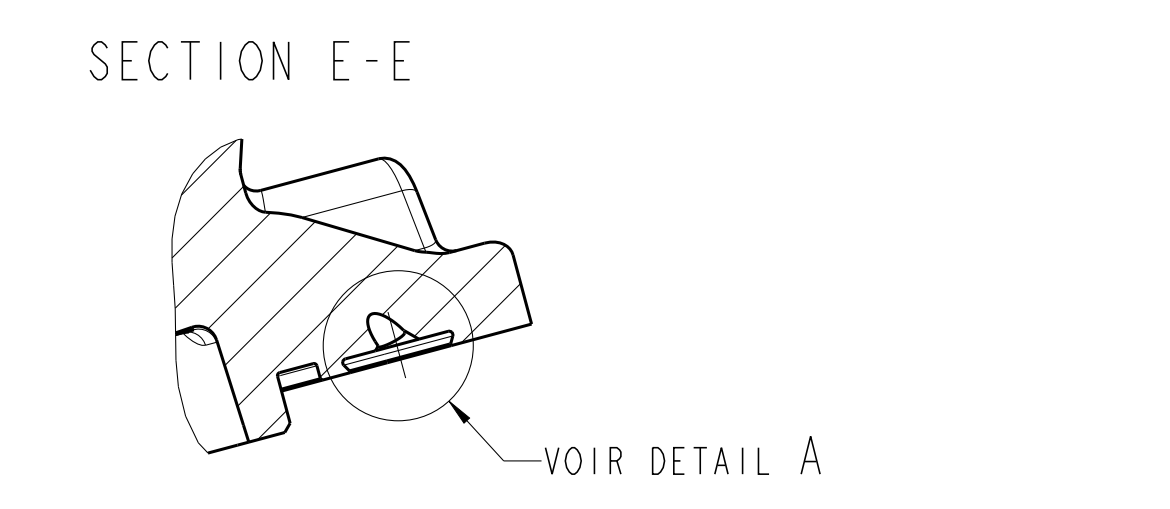
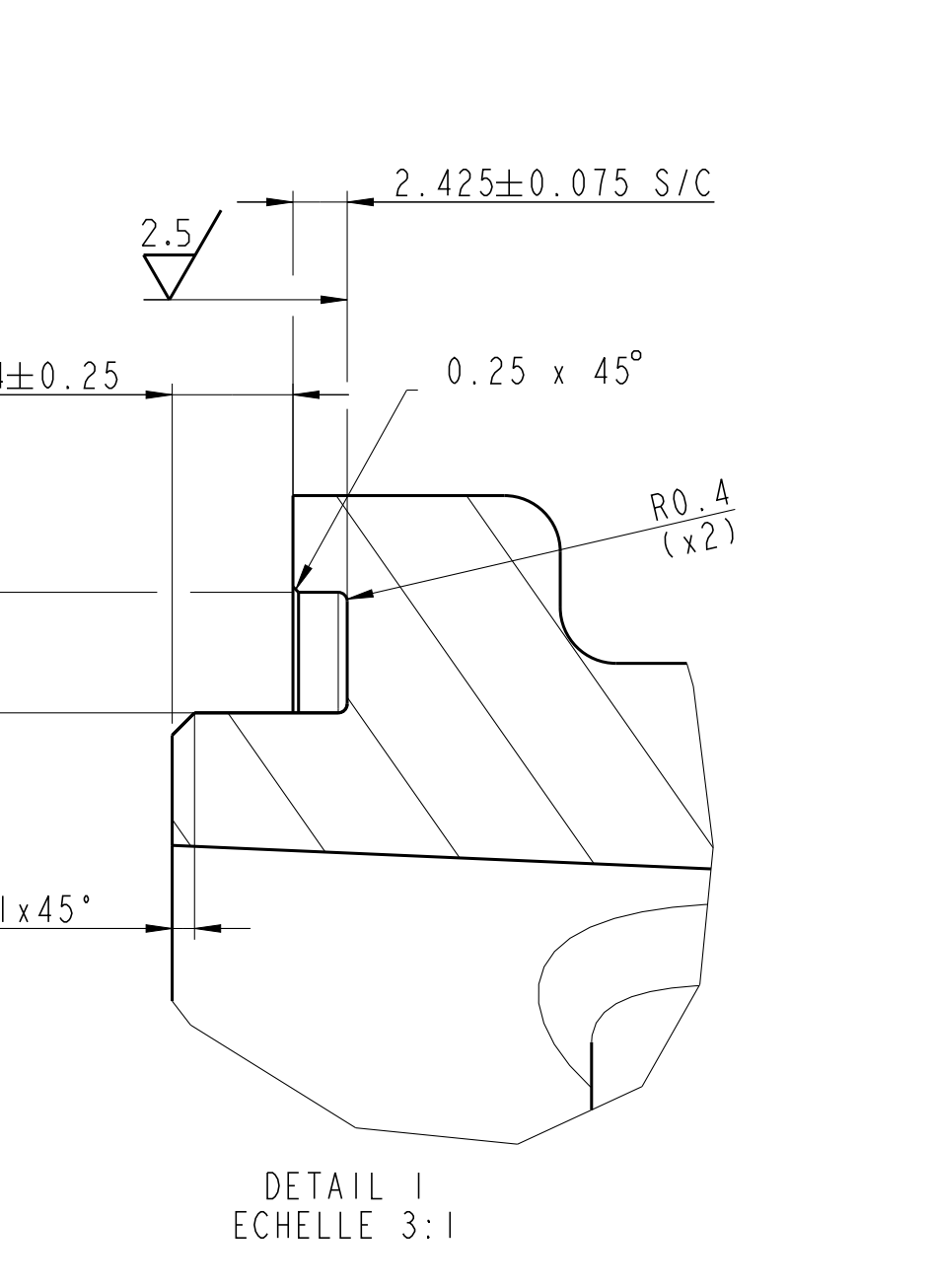
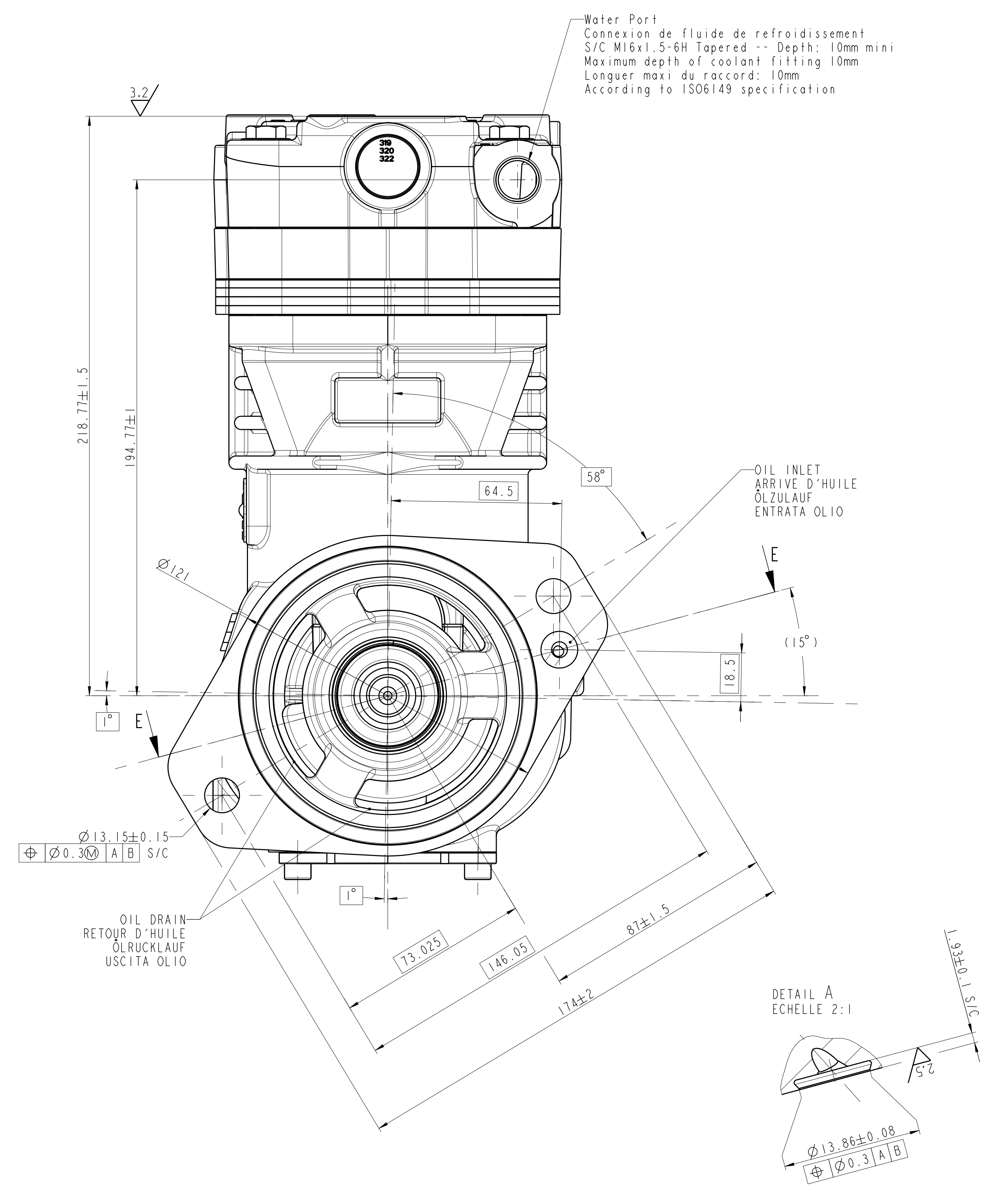
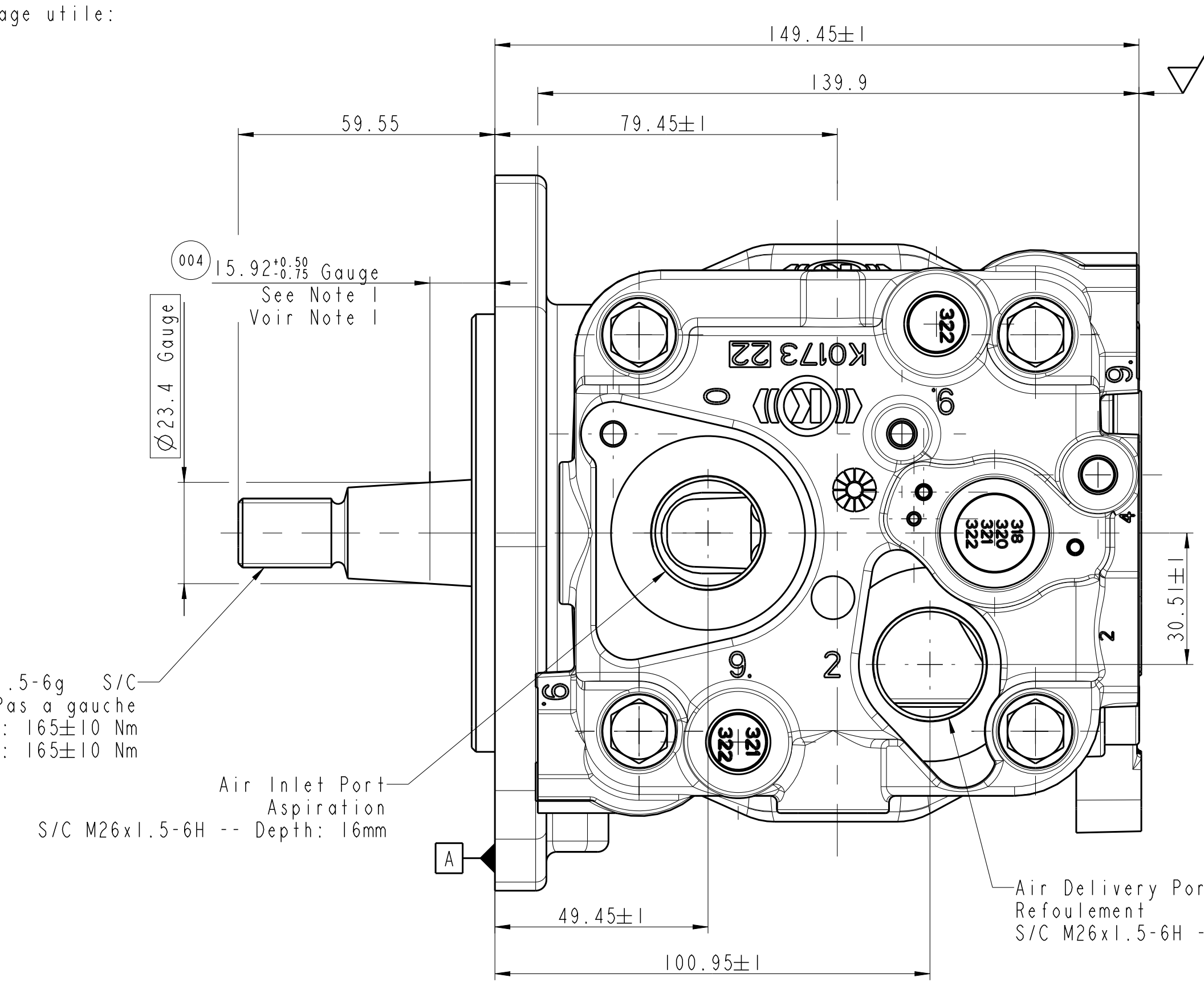
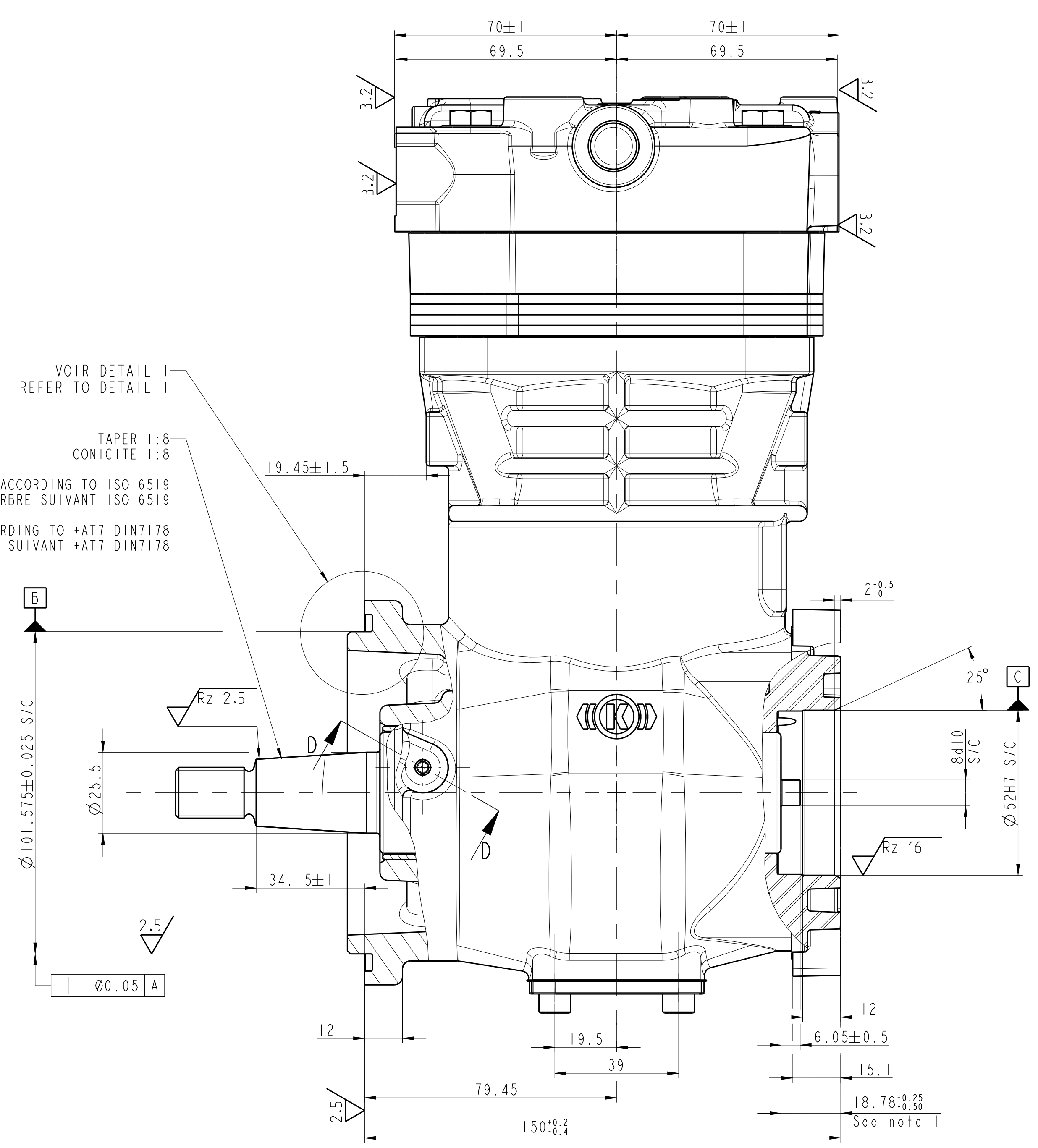
Valable pour	K014798ES (sauf Label) (except Label)
Valid for	K014798000 (sauf Label) (except Label)

Tolerances Toleranzen Tollerances		Couple de serrage maxi pour raccordement fileté suivant Max. Anziedrehmoment fuer Anschlussgewinde nach Max. tightening torque for connecting thread to						
Cotes nominales en Nominalmasse in Nominal dimensions in		DIN 3853						
mm		M10x1	M12x1.5	M14x1.5	M16x1.5	M18x1.5	M22x1.5	M26x1.5
<6	>6	25Nm	25Nm	35Nm	45Nm	50Nm	60Nm	90Nm
±0.5	±0.5	±0.8	±1	±1.5	±2	±3°		

Position de montage admissible Zulaessige Einbaulage Admissible fitting position			
DIN 15029			
A B C D			
15°	5°	70°	70°



SECTION A-A



- Notes
- End float of the crankshaft included in this tolerance  
Jeu axial du vilebrequin pris en compte
  - Type Number of the compressor: LP3977  
Numero Type du compresseur: LP3977
  - Customer Part number: 4936049  
Numero Client: 4936049
  - Les valeurs des taraudages sont données en valeur mini  
Thread values indicated are in min value  
Gewindetief sind als mindalen gegeben  
I valori del filetto indicati sono nel valore minimo

Doc. Update Unit	30/07/20	FA
Doc. Invent. Issue / Revue	09/07/19	RP90
Doc. (2nd)	05/03/27	EP90ad
Doc. First Release	07/03/06	8602
Doc. Name	Compressor	
Doc. No.	2022679	
Doc. Type	Technical Drawing	
Doc. Language	English	
Doc. Scale	1:1	
Doc. Weight	11.685 kg	

KNORR-BREMSE

KNORR-BREMSE Group