

UP2DATE

Special Tools and Auxiliary Tools Comprehensive Solutions from Knorr-Bremse

Knorr-Bremse TruckServices supplies vehicle owners, workshops and dealers with high-quality products and service solutions for commercial vehicles of all types and ages.

This ensures that every commercial vehicle is ready for use again as quickly and in as perfect condition as possible.

In order to make servicing not only safer and faster, but also more cost-effective, Knorr-Bremse TruckServices is continuously extending its offer of special tools and auxiliary tools for maintenance.

The following pages give an overview of these tools and, where available, additional information to further documentation.

At a glance:

- › Workshop solutions inspired by market feedback
- › Developed in cooperation with leading companies producing special tools
- › Easier, safer, faster and more cost-effective maintenance
- › Continuous expansion of tool program



TEBS Tool Case

K148897K50

Documentation:

Service Instructions: Y274021-#

Up2Date: Y286261-#

Suitable for Knorr-Bremse Trailer EBS Modules

- › Fast releasing of all electronic connectors on Trailer EBS modules (power supply, additional functions, wheel speed sensors)
- › Tool for bayonet nut releasing comes with a square key, making it possible to use a standard ratchet
- › All other tools come with an ergonomically designed, two-component handle for ease of handling
- › Detailed repair instructions available online

The special tools from Knorr-Bremse support you in the following service actions:

- › Releasing the electrical connectors from the Trailer EBS Module
- › Releasing and tightening the power supply connector (bayonet nut)

Also available as single unit:

- › K141323N50 - TEBS extraction tool for 4/6 pole plug
- › K141324N50 - TEBS extraction tool for 12 pole plug
- › K141325N50 - TEBS extraction tool for 2 pole plug
- › K141326N50 - TEBS extraction tool for bayonet nut connector

K148897K50



Special Tool Bayonet-Ring

K162153K50

Documentation:

Service Instructions: Y162789-#

Service Instructions: Y314790-#

Suitable for Knorr-Bremse Bayonet Cartridges

- › Easy and quick releasing and also tightening of the bayonet ring of Bayonet Cartridges
- › Intuitive handling
- › Simplification of everyday tasks in the workshops

K162153K50



- For the latest revision please refer to the website:

truckservices.knorr-bremse.com

Air Disc Brake Tool Cases

New! K182958K50

Documentation:

Service Manual: Y418754-#

Up2Date: Y514892-#

Contains all the special tools required for professional servicing of Knorr-Bremse Air Disc Brakes types SyT7

- › Compact case to facilitate repair and maintenance
- › Robust design for every days workshop work
- › Perfectly organized & easy to transport
- › Detailed repair instructions available online

K158880K50*

Documentation:

Service Manuals: C16352-#, Y006471-#, Y081564-#, Y173241-#, Y416977-#

Contains all the special tools required for professional servicing of Knorr-Bremse Air Disc Brakes types SB5/SB6/SN6/ST6/SB7/SN7/SK7/SM7/SL7/ST7/SyD7

- › Compact case to facilitate repair and maintenance
- › Robust design for every days workshop work
- › Perfectly organized & easy to transport
- › Detailed repair instructions available online

K037001

Documentation:

Service Manual: Y015044-#

Contains all the special tools required for professional servicing of Knorr-Bremse Air Disc Brakes type SN5.

Suitable for Knorr-Bremse 17,5" Air Disc Brakes.

Tool Component Sets for Exchange or Replacement **

Documentation:

Up2Date: Y485362

K253725N50 **

Contains: Spindle, Nut, Bearing TB01, TB17, TB18

K171773N50 **

Contains: Fork TB03

K253727N50 **

Contains: Grooving Tool, Pressure Sleeves, Guide Sleeve, Pressure piece (for pressure sleeve TB05, TB16, TB21, TB23)

* Replaces Tool Case K039062K50 and I137951004

** In addition to K158880K50

- For the latest revision please refer to the website:

truckservices.knorr-bremse.com

K182958K50



K158880K50



K037001



K253725N50



K171773N50



K253727N50



Supplementary Tool Kits for Air Disc Brakes

K209211K50**

Documentation:
Up2Date: Y444902-#

Supplementary Tool Kits for Air Disc Brakes with Double Roller Bearing cartridge.
Suitable for Knorr-Bremse Brakes types SN6/SN7/SK7/SM7/SL7

K172453K50**

Documentation:
Service Instructions: Y326883-#
Up2Date: Y344230-#

Suitable for WABCO Air Disc Brakes applications.
Types PAN 19-1, PAN 19-1 plus, PAN 22-1 and PAN 25

K172454K50**

Documentation:
Service Instructions: Y326882-#
Up2Date: Y344230-#

Suitable for Haldex Air Disc Brake applications.
Types DBT 19 LT (Modul T) and DBT 22 LT (Modul T)

K209211K50

K172453K50
K172454K50

eService Manuals

Documentation:
eService Manual **SyD7**: Y480013-#
eService Manual **SyT7**: Y528109-#

Have you had the chance to experience this new feature yet?

Knorr-Bremse's eService Manuals for the latest pneumatic disc brakes are now available in an attractive new digital format, setting new standards in the industry.

With brake generation SyD7 brakes, Knorr-Bremse is breaking new ground not only in its new range of Air Disc Brakes but, also in terms of its accompanied technical documentation.

Use the QR code or click on the link to go directly to the SyD7 web page (currently in eight languages) or SyT7 eService Manual web page.

Further eService Manuals are planned along with additional language variants for each.

** In addition to K158880K50

- For the latest revision please refer to the website:
truckservices.knorr-bremse.com



SyD7
[Y480013-#](#)



SyT7
[Y528109-#](#)



Wheel Bearing Tools

Tools that facilitate the assembly and disassembly for mechanics and workshops. Especially designed for each application and each product, these special Tools ensure accuracy, safety, and effectiveness for the replacement of all bearings.

K258288N50 Universal Press Tool Kit

Documentation:

Installation Instructions: Y467872

Up2Date: Y466518

Multibrand (Volvo, DAF,...)

For disassembly and assembly of bearings with press

K258288N50



K258289N50 Hydraulic Extractor

Documentation:

Installation Instructions: Y467876

Up2Date: Y466518

For all types of hubs

K258289N50



K258290N50* Press Tool SCANIA**

Documentation:

Installation Instructions: Y467873

Up2Date: Y466518

For disassembly and assembly of the front axle

K258290N50



K258291N50* Press Tool MERCEDES-BENZ**

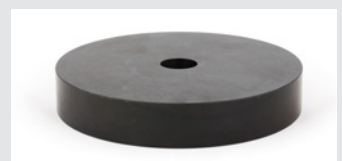
Documentation:

Installation Instructions: Y467874

Up2Date: Y466518

For disassembly of the front axle

K258291N50



K258292N50* Press Tool MERCEDES-BENZ**

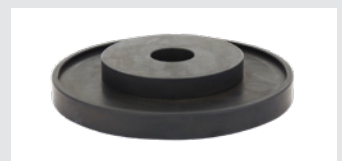
Documentation:

Installation Instructions: Y467874

Up2Date: Y466518

For assembly of the front axle

K258292N50



*** These tools can be used in combination with K258288N50

- For the latest revision please refer to the website:

truckservices.knorr-bremse.com

Auxiliary Tools

Digital Testing Device for Wear-Potentiometers **K154433N50**

Documentation:

User Manual: Y119119-#

Suitable for Knorr-Bremse Air Disc Brakes with continuous or black/white potentiometers

- › Testing of potentiometer functionality on Knorr-Bremse Air Disc Brakes
- › Checking the wear condition of the Brake Pads and Discs

Adjuster Indicator Tool Set **K219632K50**

Documentation:

Up2Date: Y458348-#

For functional testing of the Pneumatic Disc Brake Adjuster.

Five colour coded adapters: suitable for Pneumatic Disc Brakes for Knorr-Bremse, WABCO, Haldex and Meritor applications.

Quantity per indicator type: 2 pcs.

For the "How to use" video click [here](#) or use the QR code.

Actuator Maintenance Gauge **K108806K50**

Documentation:

Service Instructions: Y302415-#

Up2Date: Y306344-#

Suitable for Knorr-Bremse Brake Actuators

- › Leads to quick service decisions
- › Reduction of downtime
- › Enables a quick and easy check of the height of the Actuator's seal and push rod
- › Ensures orientation of Actuator corresponds exactly with original installation

Brake Disc Measuring Gauge **K146719K50**

Documentation:

Service Instructions: Y302366-#

Up2Date: Y306333-#

Suitable for Brake Discs for Knorr-Bremse Air Disc Brake applications, to enable

- › Quick monitoring of the wear condition of all 17.5", 19.5" and 22.5" Brake Discs
- › Reduction of downtime
- › Quick identification of the current wear condition of a Brake Disc without removing the wheel

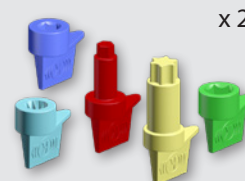
- For the latest revision please refer to the website:

truckservices.knorr-bremse.com

K154433N50



K219632K50



K108806K50



K146719K50



Release Tools for Raufoss Couplings/Tube Release

Release Tool Kit **2600970**

Documentation:

Up2Date: Y356588-#

For a quick and safe loosening of pipes from push-to-connect fittings and releasing tubes of different pipe sizes.

The Release Tool Kit contains the metal parts as listed in the table below in column "Metal". All parts available separately and as a standard plastic option.

Plastic/ Standard	Tool Part Number			
	Metal	Aluminium*	Tube	Thread
96606010	96606020	96606021	6x1	1/4"
96608010	96608020	96608021	8x1	
96610010	96610020	96610021	10x1	3/8"
96612710	96612020	96612021	12x1,5	1/2"
96615010	96615020	96615021	15x1,5	
96616010	96616020	96616021	16x2	5/8"

* In preparation:

Metal parts are in a transition upgrade to lightweight aluminium for optimum durability. All tools as well as the new Release Tool Kit 2600921 contain aluminium parts as listed in the table column "Aluminium".

Release Bolt **K040394K50**

Documentation:

Product Data: Y011369-#, Y011371-#, Y427117-#

Service manual: Y467029-#, Y467029-#

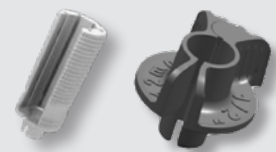
Suitable for double-diaphragm Spring Brakes in Trailer applications.

- › Supports winding-off of the power spring in case of failure in the air system

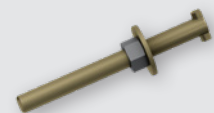
2600970



Metal / Plastic



K040394K50



- For the latest revision please refer to the website:

truckservices.knorr-bremse.com

The Professionals Choice



KEEP IT RUNNING

Knorr-Bremse Systems for Commercial Vehicles

Moosacher Strasse 80 | 80809 Munich | Germany

Tel: +49 89 3547-0

mytruckservices.knorr-bremse.com



Disclaimer: The information contained in this document is intended for the exclusive use of trained persons within the commercial vehicle industry, and must not be passed on to any third party.

All recommendations regarding products and their servicing or usage are with reference to Knorr-Bremse products and should not be considered applicable to products from other manufacturers.

This information does not purport to be all-inclusive and no responsibility is assumed as a result of its use. We cannot accept any liability nor offer any guarantee regarding data accuracy, completeness or timeliness. The information does not represent any guarantee or ensured characteristics of the Products or Systems described.

No liability can be accepted based on the information, its use, recommendations or advice provided. In no event may we be held liable for any damage or loss except in the case of wilful intent or gross negligence on our part, or if any mandatory legal provisions apply.

The information contained herein is subject to alteration without notice and therefore may not be the latest release. Please check our website mytruckservices.knorr-bremse.com for the latest update or contact your local Knorr-Bremse representative. The figurative mark "K" and the trademarks KNORR and KNORR-BREMSE are registered in the name of Knorr-Bremse AG. Additional terms and conditions apply; please refer to our website truckservices.knorr-bremse.com for full Disclaimer.

Any legal disputes arising from the use of this information shall be subject to German law.

Note: If service work is carried out on a vehicle based on information provided herein, it is the responsibility of the workshop to ensure the vehicle is fully tested and in full functional order before the vehicle is returned into service. Knorr-Bremse accepts no liability for problems caused as a result of appropriate tests not being carried out.

This disclaimer is a translation of a German text, which should be referred to for all legal purposes.

Copyright © Knorr-Bremse AG - all rights reserved, including industrial property rights applications. Knorr-Bremse AG retains any power of disposal, such as for copying and transferring.