

UP2DATE

NEW PRESSURE MODULATOR VALVE FOR VOLVO & RENAULT APPLICATION

Pressure Modulator Valves are used in the Braking System, in order to modulate pressure in the Brake Actuators in response to signals from e.g. the Electronic Control Unit (ECU) or the Foot Brake Valve.

In 2013 Volvo and Renault launched their new Truck model ranges, which were and still are equipped with Pressure Modulator Valves (PMVs) from Knorr-Bremse. The new PMVs come with robust and corrosion resistant aluminum housing and use a Tyco connector as electrical connection. Down to the present day more than 200.000 vehicles in the field fitted out with Knorr-Bremse PMVs. From now on this PMV is available in the Independent Aftermarket.

KB IAM Part Number	KB OE Part number
K038408N50	K038400N07 (Volvo)
	K038401N06 (Renault)

Available in the Independent Aftermarket now

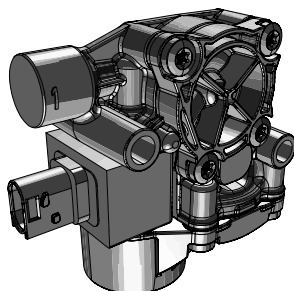
- › Rationalized PMV fits for both applications, Volvo and Renault
- › Less handling and storage effort due to only one part number
- › OE quality

Please find the new PMV integrated in an overview of the most commonly used Knorr-Bremse PMVs as well as information on application and cross references.

TRUCKSERVICES

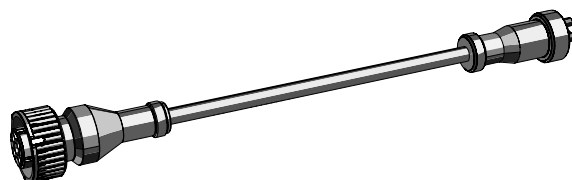
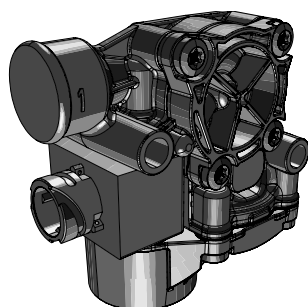


KNORR-BREMSE PRESSURE MODULATOR VALVE PROGRAM (ABS/EBS)



IAM Part Number	Electrical Connection	Port Threads - can be used with
K038438N50	DIN Bayonet (24V)	Voss 230, Voss 232 or M22x1,5
K038488N50	DIN Bayonet (12V)	Voss 230, Voss 232 or M22x1,5
K093488N50	DIN Bayonet (24V)	M22x1,5
K038408N50 - NEW	Tyco plug (24V)	M16x1,5

KNORR-BREMSE PRESSURE MODULATOR VALVE PROGRAM (ABS/EBS) INCL. ADAPTER CABLE



IAM Part Number	Electrical Connection	Port Threads - can be used with
K0384381N50	Kostal M24x1 (24V)	Voss 230, Voss 232 or M22x1,5
K0384382N50	Schlemmer Bayonet (24V)	Voss 230, Voss 232 or M22x1,5
K0384881N50*	Kostal M24x1 (12V)	Voss 230, Voss 232 or M22x1,5
K0935181N00	Kostal M24x1 (12V)	1/2"-14 NPTF

*replaces K0384681N50, existing stock can be used up.

CROSS REFERENCES TO VEHICLE MANUFACTURER*

IAM part number	Vehicle manufacturer	Part number of vehicle manufacturer
K038438N50	Daimler	A0054293044
	Iveco / Irisbus	5801476698
		5006143819
	MAN	81.52452-6039
	Renault	7420516342
		7421892927
		7421893128
	Scania	1376793
	Volvo	1079666
		20516342
		21893128
9959212		
1524831		
K0384381N50	DAF / Leyland	657227
		890743
	Daimler	A0044293444
		A0044296044
		A0044296144
	Iveco / Irisbus	42070065
		42123220
		5006022297
	Renault	5000790124
		5430042384
		5001866014
	Scania	1307040
		1518589
Volvo	1195752	
Dennis Eagle	1034206	
K0384382N50	MAN	81.52452-6014
81.52452-6015		
K038488N50	DAF	1506176
K0935181N00	DAF	1518104
K093488N50	Daimler (Unimog)	A0054293344
K038408N50	Volvo	21327360
	Renault	7421327358

* Please note, the above listed cross-references to the manufacturer's or competitor's numbers are only intended as a guide for identifying the relevant IAM part

CROSS REFERENCES TO COMPETITOR*

IAM Part Number	Vehicle manufacturer	Wabco Part Number
K038438N50		472 195 016 0
		472 195 018 0
		472 195 056 0
		472 195 058 0
		472 195 055 0
		472 195 097 0
		472 195 069 0
K0384381N50	incl. Adapter cable	472 195 921 2
		472 195 920 2
		472 195 015 0
		472 195 053 0
		472 195 007 0
		472 195 014 0
		472 195 004 0
		472 195 004 7
		472 195 008 0
K0384382N50	incl. Adapter cable	472 195 009 0
		472 195 011 0
K038488N50		472 195 066 0
K0935181N00	incl. Adapter cable	472 195 005 0

* Please note, the above listed cross-references to the manufacturer's or competitor's numbers are only intended as a guide for identifying the relevant IAM part

EVERY VEHICLE TELLS ITS STORY.
KEEP IT RUNNING

Up-to-date information on our products can be
found on our website www.knorr-bremsecvs.com



Knorr-Bremse Group

Knorr-Bremse Systems for Commercial Vehicles

Moosacher Strasse 80 | 80809 Munich | Germany
Tel: +49 89 3547-0 | Fax: +49 89 3547-2767
WWW.KNORR-BREMSECVS.COM

Note

All information is subject to change. A printed version of this document may therefore not correspond to the latest revision. To obtain the latest version, please visit our website www.knorr-bremsecvs.com or contact a Knorr-Bremse representative in your area.

If service work is carried out on a vehicle based on information provided herein, it is the responsibility of the workshop to ensure the vehicle is fully tested and in full functional order before the vehicle is returned into service. Knorr-Bremse accepts no liability for problems caused as a result of appropriate tests not being carried out.

Copyright © Knorr-Bremse AG

All rights reserved, including industrial property rights applications. Knorr-Bremse AG retains any power of disposal, such as for copying and transferring.

Disclaimer

The information contained herein is intended for the exclusive use of trained persons within the commercial vehicle industry, and must not be passed on to any third party. All recommendations regarding products and their servicing or usage are with reference to Knorr-Bremse products and should not be considered applicable to products from other manufacturers. This information does not purport to be all-inclusive and no responsibility is assumed as a result of its use. We cannot accept any liability nor offer any guarantee regarding data accuracy, completeness or timeliness. The information does not represent any guarantee or ensured characteristics of the Products or Systems described. No liability can be accepted based on the information, its use, recommendations or advice provided. In no event may we be held liable for any damage or loss except in the case of wilful intent or gross negligence on our part, or if any mandatory legal provisions apply. This disclaimer is an English translation of a German text, which should be referred to for all legal purposes. Any legal disputes arising from the use of this information shall be subject to German law.