

Einbaulage stehend (wie gezeichnet)
 max. 60° geneigt
 Installation position upright (as drawn)
 tilt to any side max. 60°

Betriebsdruck max.: 14 bar
 Operating pressure max.: 14 bar

Staudruck bei 7 bar und 400 NI/min: < 0.4 bar
 Dynamic pressure at 7 bar and 400 NI/min: < 0.4 bar

Schuettfestigkeit: 10g
 Resistance against vibrations: 10g

Klassifikation des Filters ≥ H13 (nach EN1822-1)
 Classification of the filter ≥ H13 (according EN1822-1)

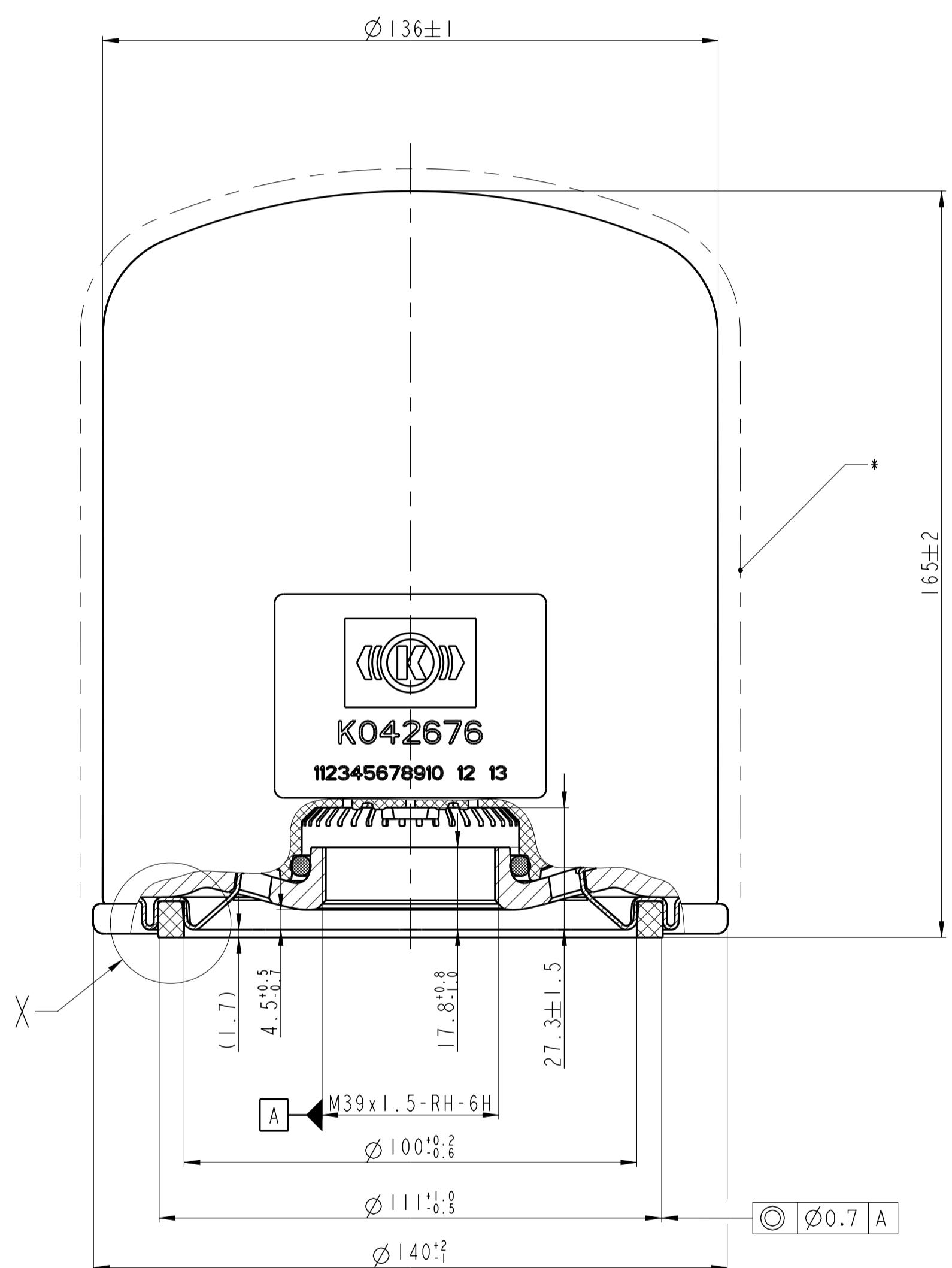
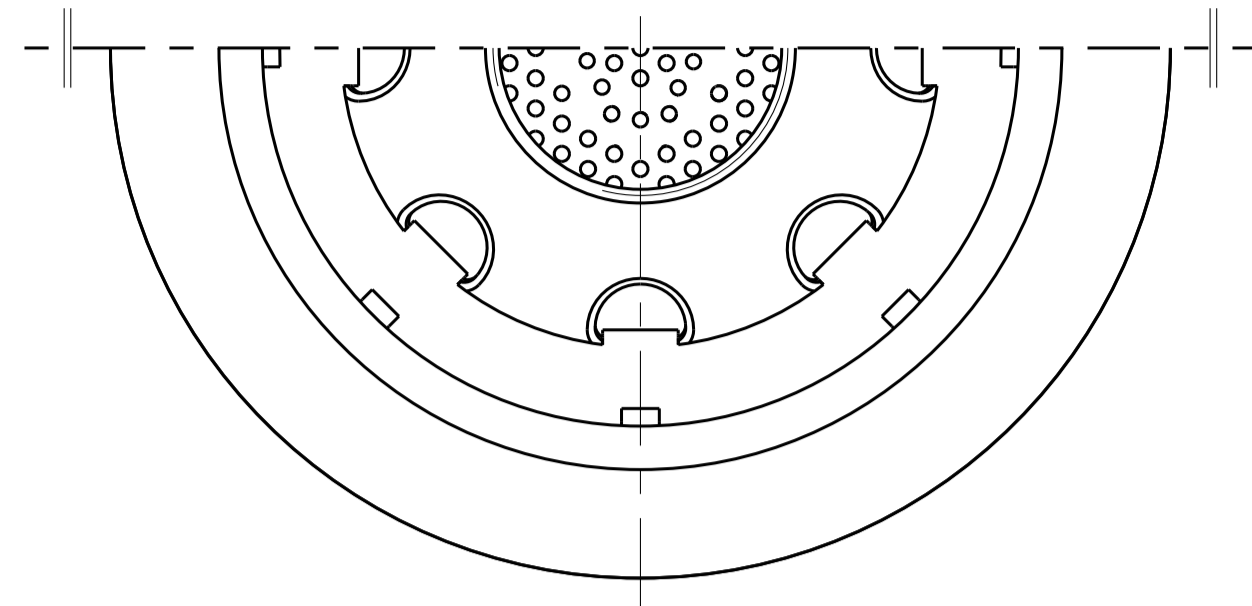
Thermischer Anwendungsbereich:
 Funktionssicherheit -30°C...+65°C
 Temperaturvertraeglichkeit -40°C...+80°C

Permissible temperature range:
 Functional reliability -30°C...+65°C
 Temperature compatibility -40°C...+80°C

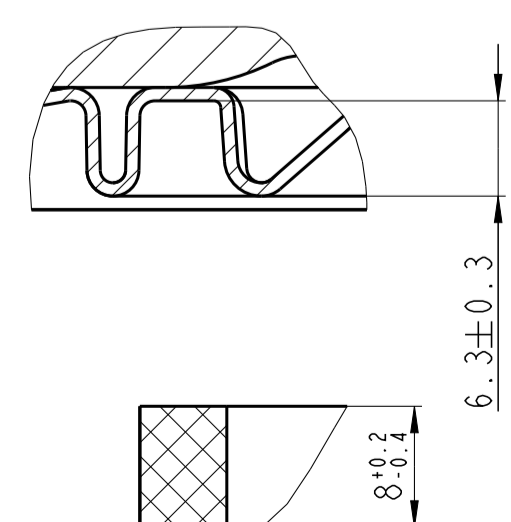
Taupunktabsenkung: min. 30°C gemessen am Knorr-Bremse
 Referenzsystem (Taupunkt der angesaugten Luft 1l°C)
 Dew point lowering: min. 30°C measured at Knorr-Bremse
 reference system (dew point of the air intake 1l°C)

*Gehaeuse: Oberflaeche RAL 9004 signalschwarz
 *Housing: surface RAL 9004 signal black

Trockenmittel-Typ: Molecular sieve
 Desiccant-type: 002



X 2:1
 Dichtring demontiert
 Sealing ring disassembled



Zubehoer
 Accessory
 O-Ring
 O-seal

Disclaimer

The information contained herein is intended for the exclusive use of trained persons within the commercial vehicle industry. This product or component may be suitable only for the specific application set forth herein. Statements regarding the suitability of products for certain types of applications are based on Knorr-Bremse understanding of typical requirements. Such statements, however, are not binding statements about the suitability of products for any different application. It is at all times the user's responsibility to validate the suitability of a particular product for use in a different application than contained herein. This information does not purport to be all-inclusive and no responsibility is assumed as a result of its use. In no event may we be held liable for any damage or loss except in the case of willful intent or gross negligence on our part, or if any mandatory legal provisions apply.

002	†370107	2020.01.10	PalicskaD
001	TSK14-8086/CR022795	2015.07.31	Haerfnagl
000	Serial release	2010.02.02	Riedl
Rev.	Revision Reference	Date	Name
Numbers of described parts:	ISO 128-30	Special Characteristics:	0 [S/C] Surface Treatment:
K042676	First Angle Proj.	Tolerancing Principle ISO 14405	0 [C/C] Material:
		General Tolerances ISO 2768 - m	Made from:
CAD Model No.:	M023681	Corners ISO 13715	Desiccant Cartridge
Knorr-Bremse	CAD Sys.: PRO/ENGINEER/Format A1	Responsible Dept./Team MDT2	Trockenmittelpatrone
Systeme für Nutzfahrzeuge GmbH	Drawn 2010/06/30	H&Rnag	***
Knorr-Bremse Group	Release Process Documentation in EDM, Level and Status Information in Watermark.	Drawing Number Z047779	Drw-Rev: 002
		Doc-Type: 10 Language: 52	Sheet 1 of 1

This document contains proprietary and confidential information and such information may not be disclosed without the prior written consent from the Knorr-Bremse organization