



Installation Instructions

Snorkel Fitting Kit for Bendix® TABS-6™ Advanced Single-Channel Trailer ABS Module

Torx® Head Screw

Exhaust Diaphragm



Bendix TABS-6 Advanced Module

Bendix® TABS-6™ Advanced Module Snorkel Kit Installation

Key No.	Description	Qty.
1	Snorkel Fitting	1
2	O-ring	1
3	Lubricant - Tube (not shown)	1

Bendix TABS-6 Advanced Module Exhaust Diaphragm Removal

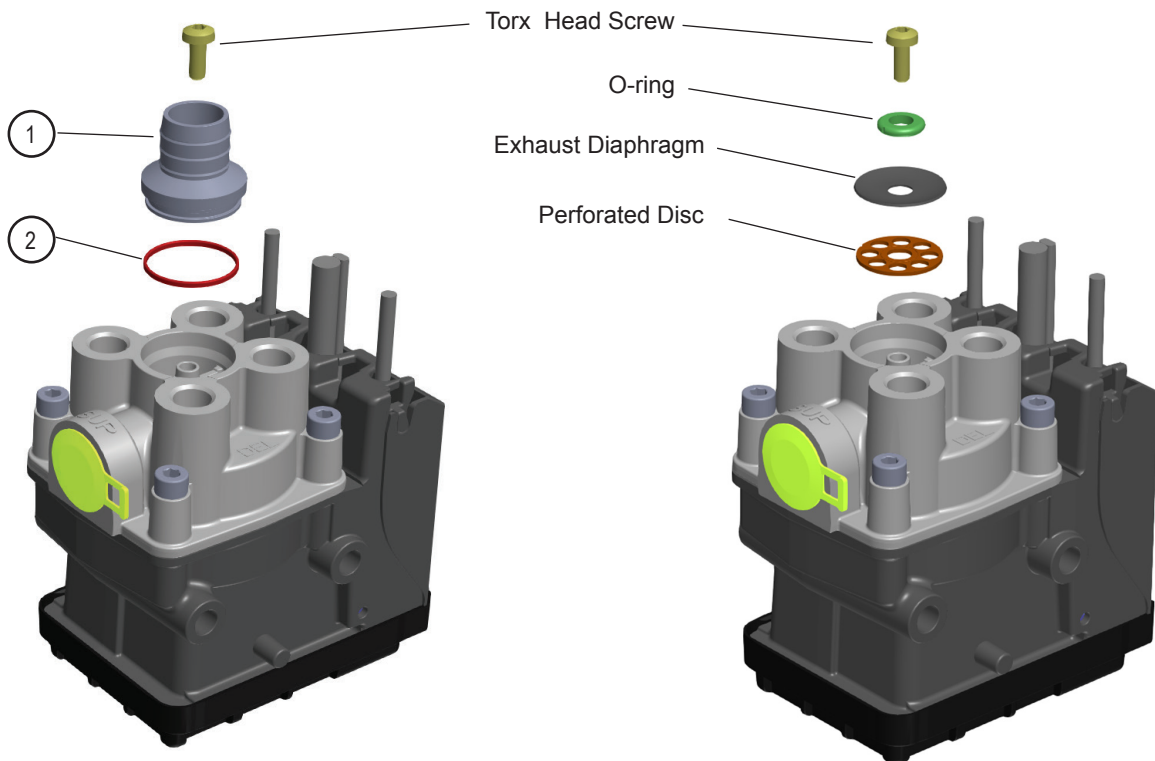


FIGURE 1 - SNORKEL FITTING KIT CONTENTS



GENERAL SAFETY GUIDELINES

WARNING! PLEASE READ AND FOLLOW THESE INSTRUCTIONS

TO AVOID PERSONAL INJURY OR DEATH:

When working on or around a vehicle, the following guidelines should be observed AT ALL TIMES:

- ▲ Park the vehicle on a level surface, apply the parking brakes and always block the wheels. Always wear personal protection equipment.
- ▲ Stop the engine and remove the ignition key when working under or around the vehicle. When working in the engine compartment, the engine should be shut off and the ignition key should be removed. Where circumstances require that the engine be in operation, **EXTREME CAUTION** should be used to prevent personal injury resulting from contact with moving, rotating, leaking, heated or electrically-charged components.
- ▲ Do not attempt to install, remove, disassemble or assemble a component until you have read, and thoroughly understand, the recommended procedures. Use only the proper tools and observe all precautions pertaining to use of those tools.
- ▲ If the work is being performed on the vehicle's air brake system, or any auxiliary pressurized air systems, make certain to drain the air pressure from all reservoirs before beginning ANY work on the vehicle. If the vehicle is equipped with a Bendix® AD-IS® air dryer system, a Bendix® DRM™ dryer reservoir module, or a Bendix® AD-9si® air dryer, be sure to drain the purge reservoir.
- ▲ Following the vehicle manufacturer's recommended procedures, deactivate the electrical system in a manner that safely removes all electrical power from the vehicle.
- ▲ Never exceed manufacturer's recommended pressures.
- ▲ Never connect or disconnect a hose or line containing pressure; it may whip and/or cause hazardous airborne dust and dirt particles. Wear eye protection. Slowly open connections with care, and verify that no pressure is present. Never remove a component or plug unless you are certain all system pressure has been depleted.
- ▲ Use only genuine Bendix® brand replacement parts, components and kits. Replacement hardware, tubing, hose, fittings, wiring, etc. must be of equivalent size, type and strength as original equipment and be designed specifically for such applications and systems.
- ▲ Components with stripped threads or damaged parts should be replaced rather than repaired. Do not attempt repairs requiring machining or welding unless specifically stated and approved by the vehicle and component manufacturer.
- ▲ Prior to returning the vehicle to service, make certain all components and systems are restored to their proper operating condition.
- ▲ For vehicles with Automatic Traction Control (ATC), the ATC function must be disabled (ATC indicator lamp should be ON) prior to performing any vehicle maintenance where one or more wheels on a drive axle are lifted off the ground and moving.
- ▲ The power **MUST** be temporarily disconnected from the radar sensor whenever any tests **USING A DYNAMOMETER** are conducted on a vehicle equipped with a Bendix® Wingman® system.
- ▲ You should consult the vehicle manufacturer's operating and service manuals, and any related literature, in conjunction with the Guidelines above.

GENERAL

The snorkel kit is designed to prevent the Bendix® TABS-6™ advanced trailer module from water damage in applications that require water fording capabilities. This kit must be installed properly or the TABS-6 module may become water damaged.

KIT INSTALLATION

Follow all standard industry safe maintenance practices, including those in this document. Removal of the TABS-6 module from the vehicle is not necessary to install this kit. *Refer to Figure 1.*

1. Locate the TABS-6 module on the vehicle.
2. While holding the rubber exhaust diaphragm in place, remove the Torx® head screw that secures the exhaust diaphragm assembly. Retain the screw for later use.
3. Remove and discard the o-ring, rubber diaphragm and perforated disc.
4. Lubricate the o-ring (2) using the lubricant (3) provided in the kit.
5. Install the o-ring (2) onto the snorkel fitting (1). *Note: This o-ring seals the snorkel, omission or incorrect installation of the o-ring may result in failure of the unit.*
6. Install the snorkel fitting (1) into the exhaust cavity, ensuring that the o-ring is not damaged during installation.
7. Secure the snorkel fitting (1) to the module body using the Torx head screw removed in step 2. Torque to 66–75 in-lbs (7.5–8.5 N•m).
8. Check the o-ring for leaks. *Note: The exhaust port cannot be pressurized to more than 10 psi or permanent damage to the valve may result. If additional testing is needed, contact Bendix Engineering for a copy of Test Specification Y146157.*

Any hose or tube installed on the snorkel fitting is the responsibility of the installer. Bendix does not provide this part and is not responsible for the installation.



Log-on and Learn from the Best

On-line training that's available when you are –24/7/365.
Visit www.brake-school.com.