



Installation Instructions

Splash Shield Kit
- 5006698

SPLASH SHIELD KIT FOR AD-IS AIR DRYER

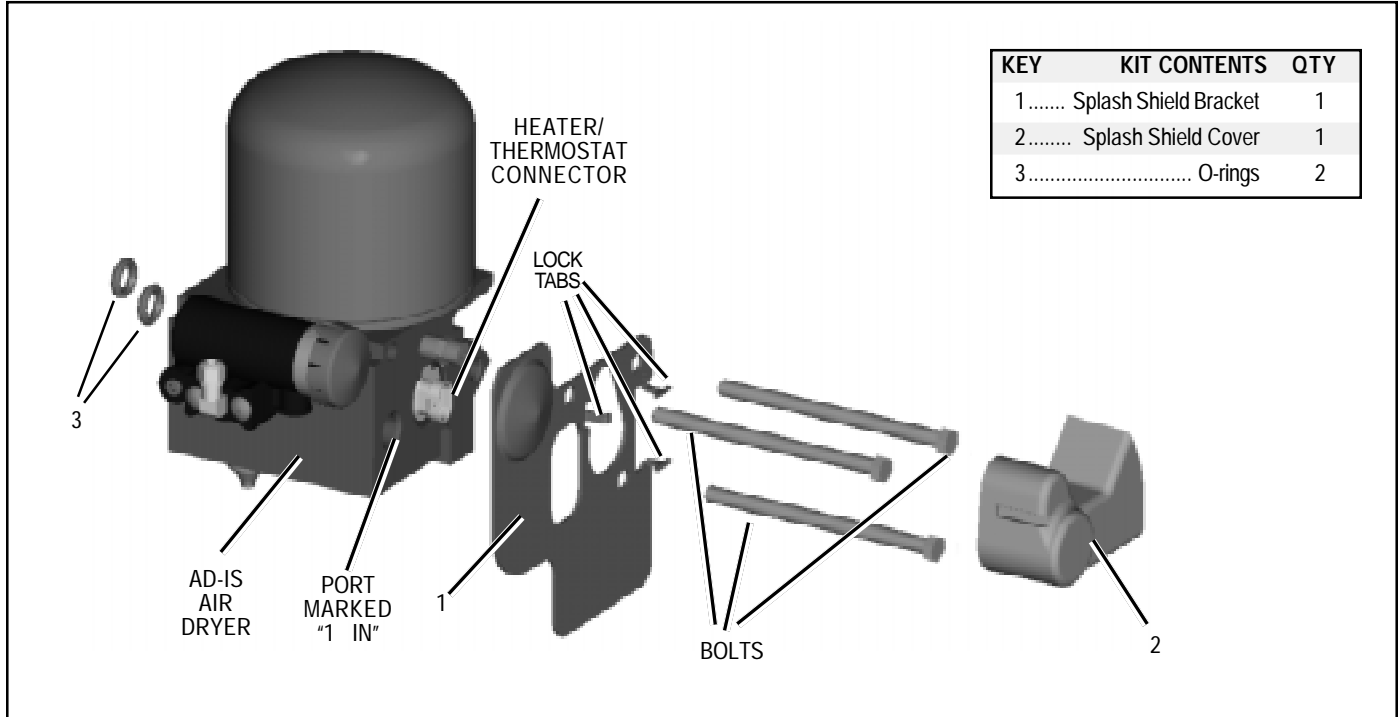


FIGURE 1 - SPLASH SHIELD EXPLODED VIEW

KIT DESCRIPTION

This kit is intended for installing or replacing a splash shield bracket and cover on an AD-IS air dryer.

IMPORTANT! PLEASE READ AND FOLLOW THESE INSTRUCTIONS TO AVOID PERSONAL INJURY OR DEATH:

When working on or around a vehicle, the following general precautions should be observed at all times.

1. Park the vehicle on a level surface, apply the parking brakes, and always block the wheels.
2. Stop the engine when working around the vehicle.
3. If the vehicle is equipped with air brakes, make certain to drain the air pressure from all reservoirs before beginning ANY work on the vehicle.
4. Following the vehicle manufacturer's recommended procedures, deactivate the electrical system in manner that removes all electrical power from the vehicle.
5. When working in the engine compartment the engine should be shut off. Where circumstances require that the engine be in operation, **EXTREME CAUTION** should be used to prevent personal injury resulting from contact with moving, rotating, leaking, heated, or electrically charged components.
6. **Never connect or disconnect a hose or line containing pressure; it may whip. Never remove a component or plug unless you are certain all system pressure has been depleted.**
7. **Never exceed recommended pressures and always wear safety glasses.**
8. **Do not attempt to install, remove, disassemble or assemble a component until you have read and thoroughly understand the recommended procedures. Use only the proper tools and observe all precautions pertaining to use of those tools.**
9. **Use only genuine Bendix replacement parts, components, and kits. Replacement hardware, tubing, hose, fittings, etc. should be of equivalent size, type, and strength as original equipment and be designed specifically for such applications and systems.**
10. **Components with stripped threads or damaged parts should be replaced rather than repaired. Repairs requiring machining or welding should not be attempted unless specifically approved and stated by the vehicle or component manufacturer.**
11. **Prior to returning the vehicle to service, make certain all components and systems are restored to their proper operating condition.**

VEHICLE PREPARATION

1. Park the vehicle on a level surface and prevent movement by means other than the brakes.
2. Drain all reservoirs to 0 p.s.i. (0 kPa).
3. Clean the exterior of the air dryer.

DISASSEMBLY

General

Follow the safety guidelines included in these instructions. If you are replacing a shield, go to item 5.

Splash shield disassembly (retrofit).

1. The line carrying air from the compressor enters the AD-IS at the port marked 1 IN. Remove this air line from the fitting. Note: It is not necessary to remove the fitting from this port.
2. Disconnect the vehicle wiring harness connector that mates with the heater and thermostat connector. Note: Lift the lock tab on the vehicle wire harness connector BEFORE attempting to disconnect the connector.
3. Remove the bolts attaching the AD-IS to the reservoir and retain for reassembly. **Note: Remove and discard washers.**
4. Remove and discard the two o-rings situated between the AD-IS and the reservoir. Go to section *Cleaning and inspection*.
5. **Splash shield disassembly (replacement).**
The line carrying air from the compressor enters the AD-IS at the port marked 1 IN. Remove this air line from the fitting. Note: It is not necessary to remove the fitting in this port.
6. Remove the splash shield cover and discard.
7. Disconnect the vehicle wiring harness connector that mates with the heater and thermostat connector. Note: Lift the lock tab on the vehicle wire harness connector BEFORE attempting to disconnect the connector.
8. Remove bolts attaching the AD-IS to the reservoir and retain for reassembly.

9. Remove the splash shield bracket and discard.
10. Remove and discard the two o-rings situated between the AD-IS and the reservoir. Go to section *Cleaning and inspection*.

CLEANING & INSPECTION

1. Inspect for physical damage to the AD-IS. Superficial external corrosion and/or pitting is acceptable. Clean as necessary.
2. Inspect all fittings for corrosion and replace as necessary.

ASSEMBLY

1. Install the replacement o-rings. The AD-IS body has channels designed to hold these in position, but take care not to move them during installation. *Note: These o-rings do not require grease.*
2. Place the splash shield bracket into position, and insert the bolts.
3. Align the bolts with the reservoir. After checking that the o-rings are in position, begin tightening the bolts. Torque bolts to 360-425 in-lbs.
5. Reinstall the wire harness to the heater and thermostat assembly on the dryer. Push the wire harness onto the heater connector until the lock tab "clicks" into place.
6. Re-attach air line from the compressor.
7. Install the splash shield cover into position over the heater and thermostat connector.
8. Before placing vehicle back into service, perform the *Operational Test* stated below.

OPERATIONAL TEST

Build the air system to governor cutout. Shut off the engine. Using a soap solution, check all lines and fittings leading to and from the air dryer for leakage and integrity. Repair any excessive leaks - exceeding a 1 inch bubble in 5 seconds - before restoring vehicle to service.

