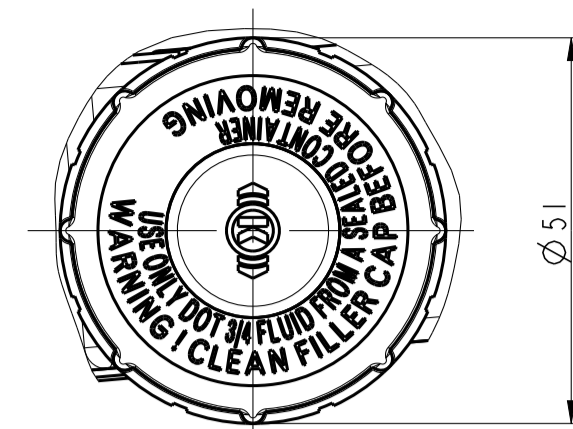
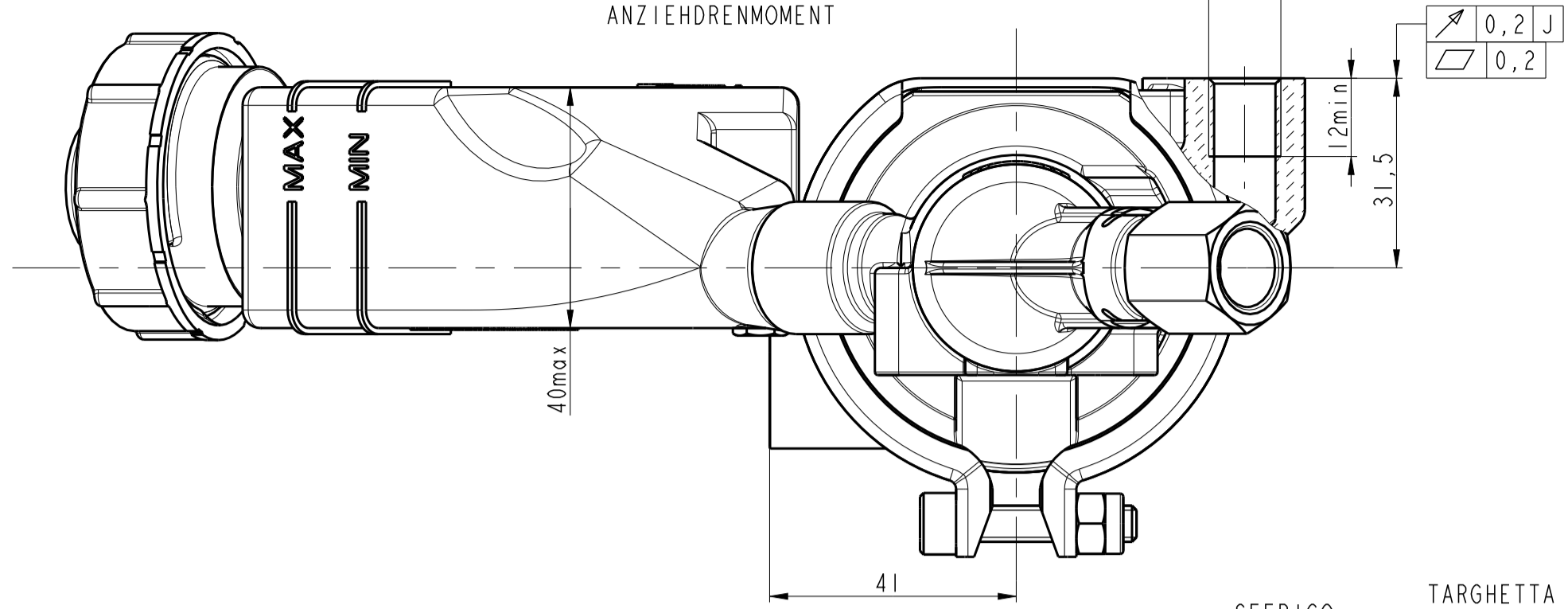
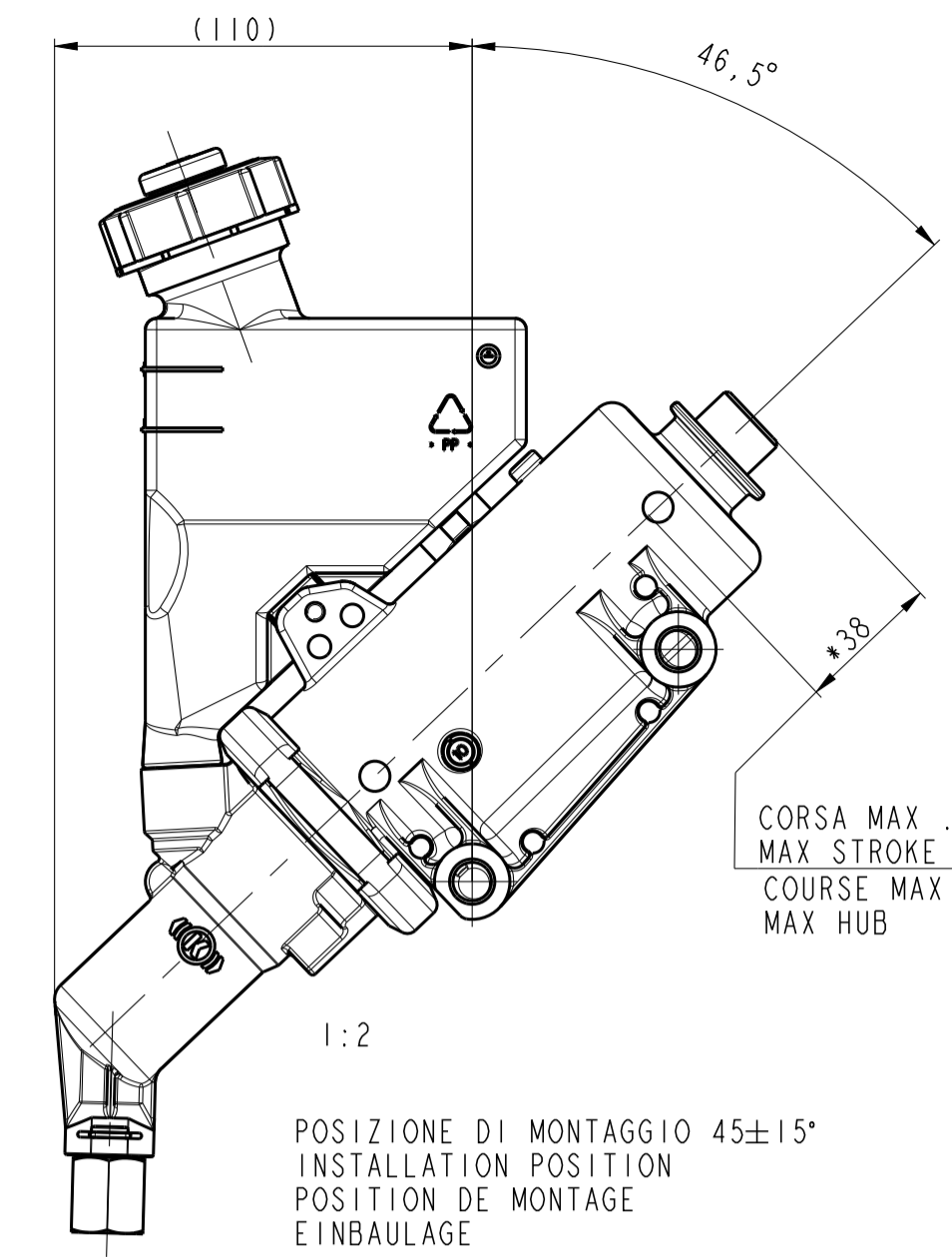


PART NUMBER	TYPE NUMBER
K021874	SMIPLA
K021874N00	SMIPLA

COPPIA DI SERRAGGIO 40Nm max
TIGHTENING TORQUE
COUPLE DE SERRAGE
ANZIEHDREHMOMENT

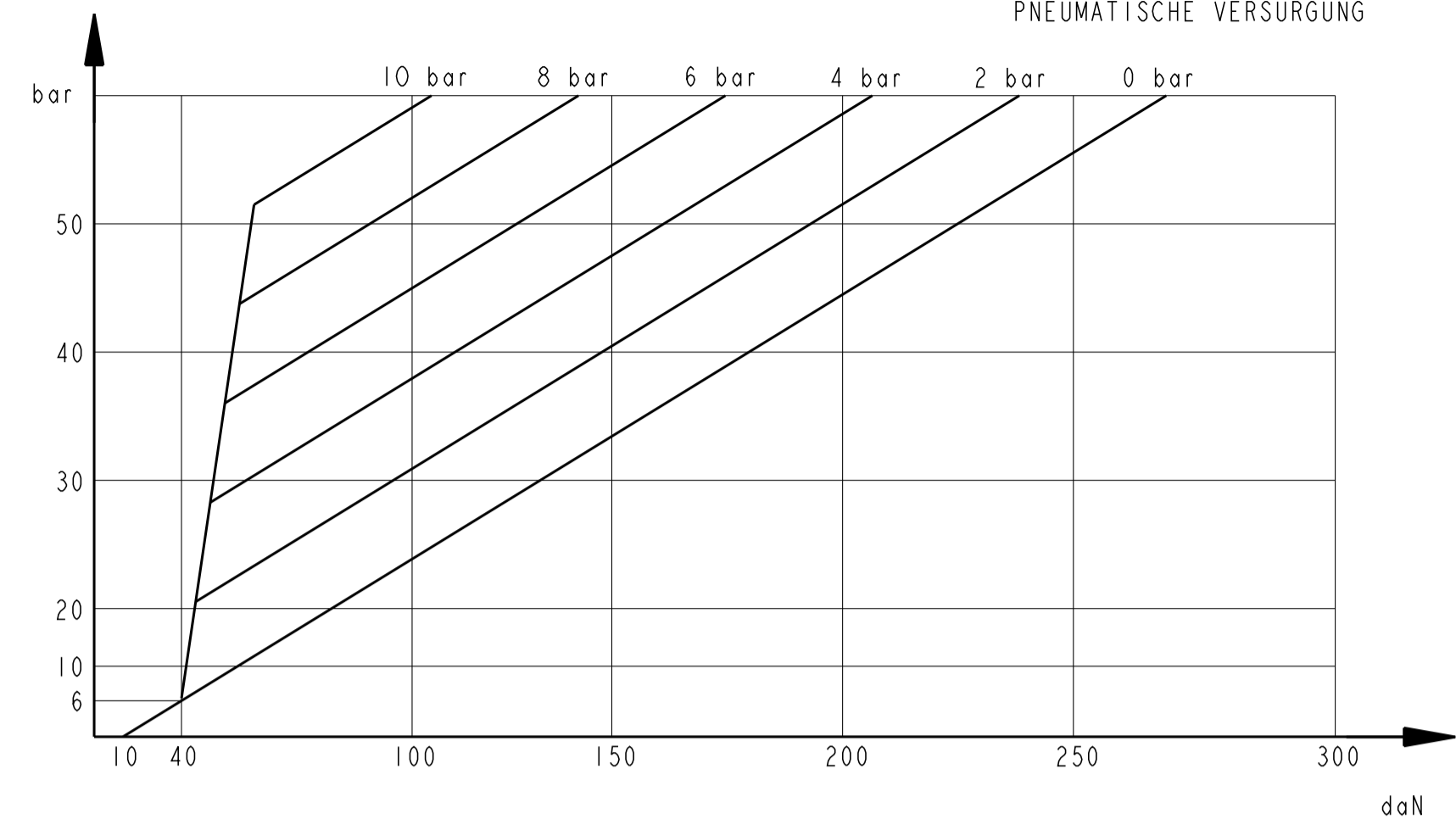


VISTA DA K
VIEW FROM K

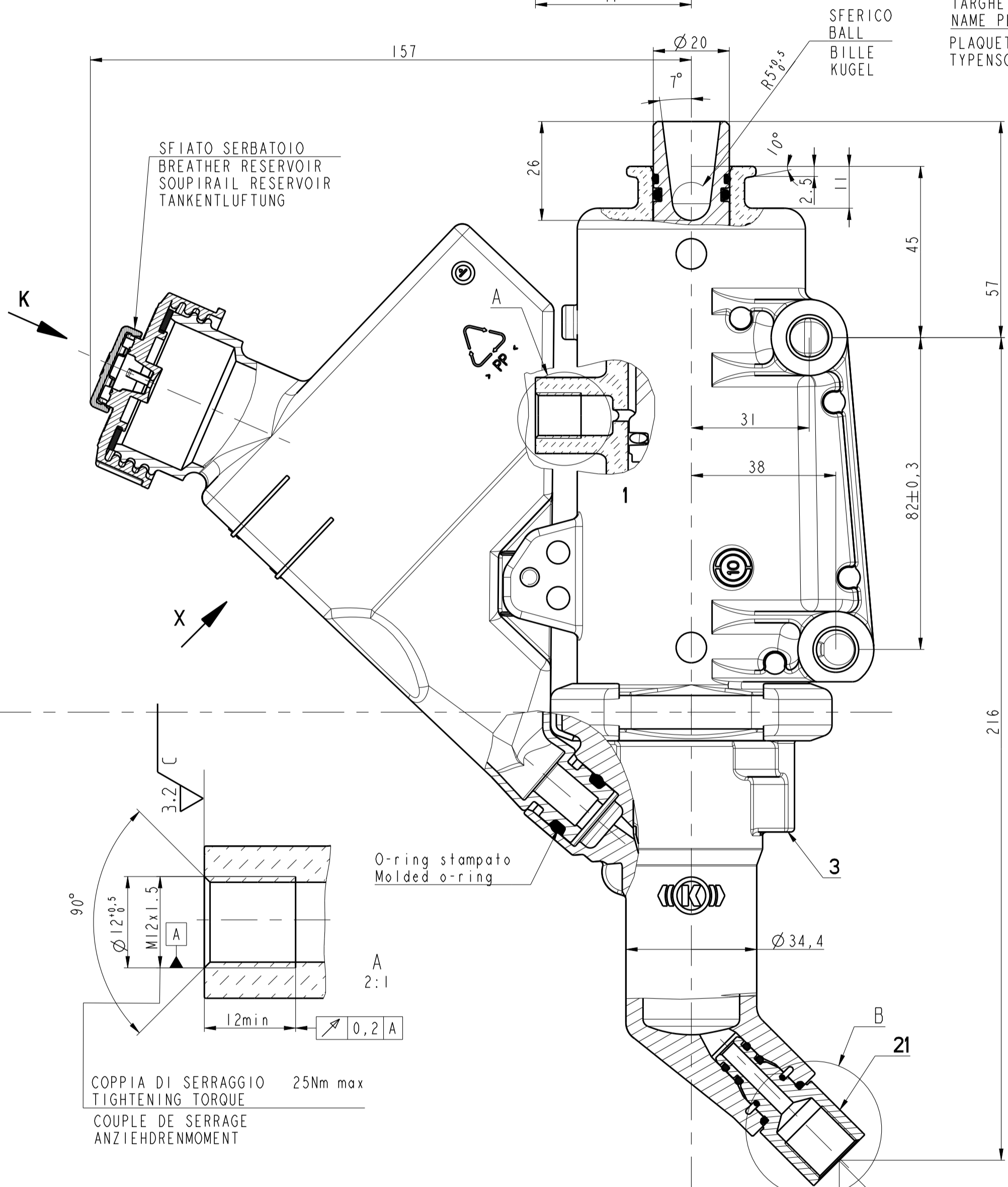


POSIZIONE DI MONTAGGIO 45±15°
INSTALLATION POSITION
POSITION DE MONTAGE
EINBAULAGE

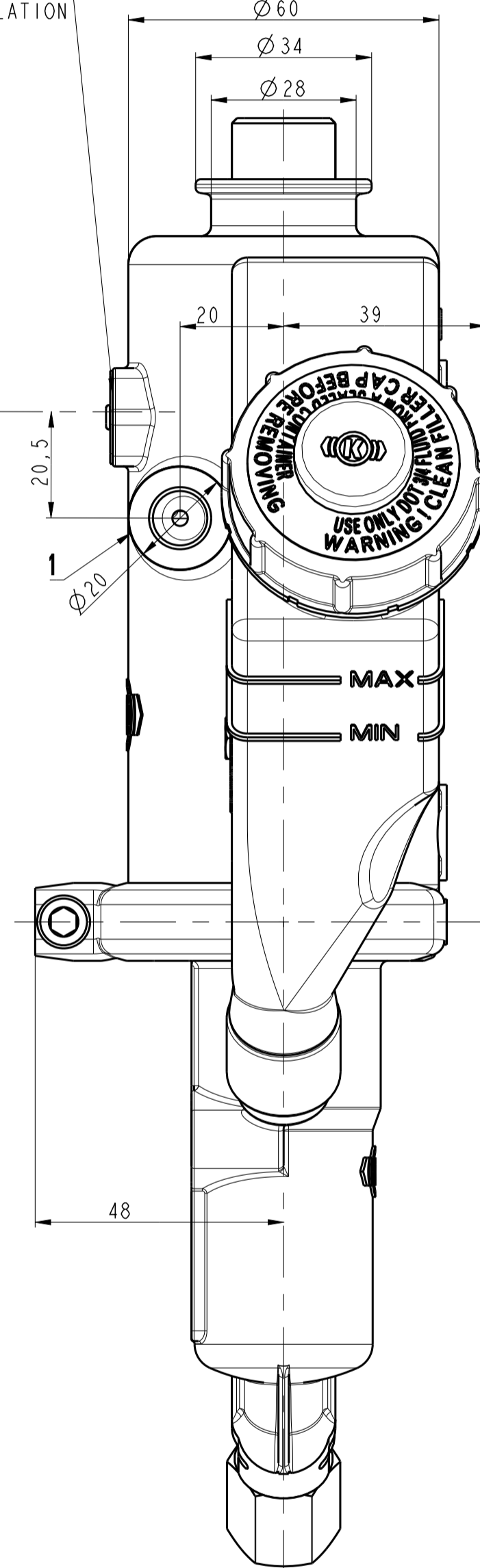
PRESSIONE IDRAULICA
HYDRAULIC PRESSURE
PRESSION-HYDRAULIQUE
HYDRAULIKDRUCK



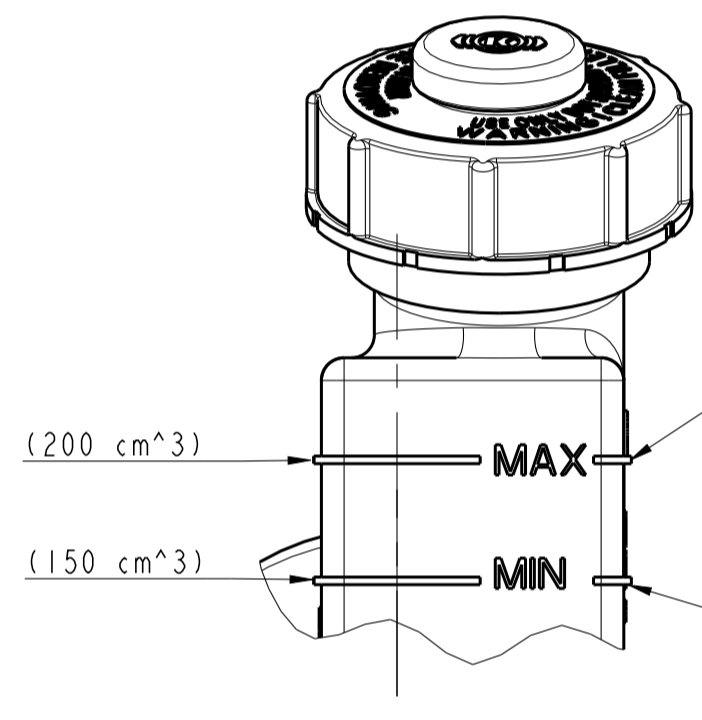
CARICO SUL PUNTALE
LOAD ON THE PUSH ROD
CHARGE SUR LE TIGE DE COMMANDE
KRAFT AM STÖSSEL



TARGHETTA
NAME PLATE
PLAQUETE D'IMMATRICULATION
TYPENSCHILD

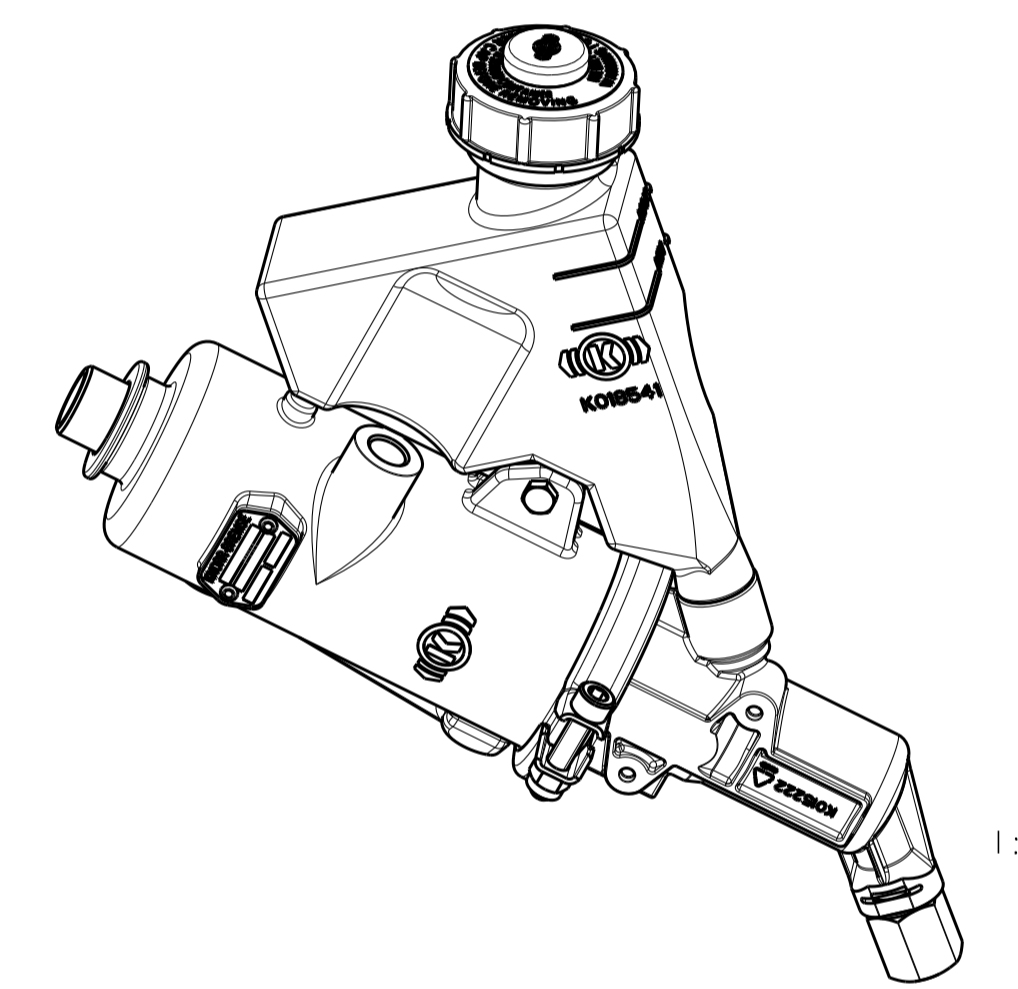


VISTA DA X
VIEW FROM X



FRIZIONE USURATA
WORN CLUTCH
EMBRAYAGE USEE
VERSCHLISSENE KUPPLUNG

FRIZIONE NUOVA
NEW CLUTCH
EMBRAYAGE NOUVEL
NEUE KUPPLUNG



TEMPERATURA D'IMPIEGO
WORKING TEMPERATURE
PLAGE DE TEMPERATURE
THERMISCHER ANWENDUNGSBEREICH

PRESSIONE D'ESERCIZIO
OPERATING PRESSURE
PRESSION D'UTILISATION
BETRIEBSDRUCK

PRESSIONE MAX NOM FUNZIONANTE
MAX PRESSURE WITHOUT FUNCTION
PRESSION MAX SANS FONCTIONNEMENT
HOCHSTDRUCK

FLUIDO
MEDIUM
FLUIDE
MEDIUM

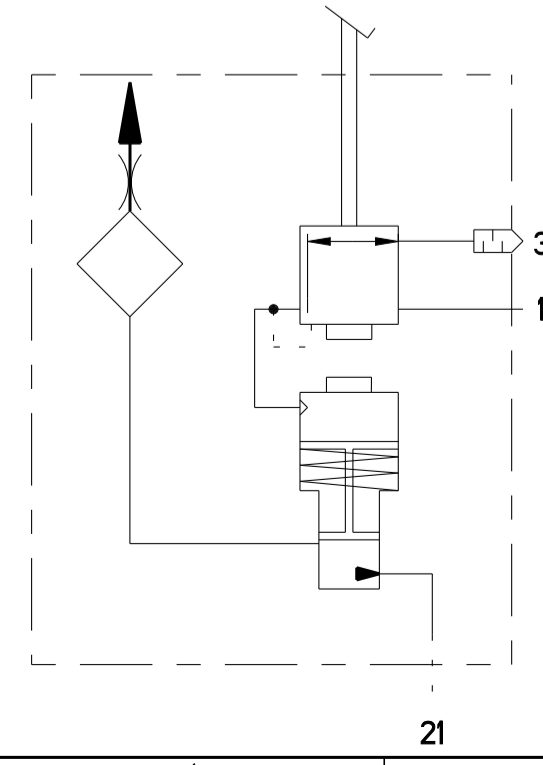
LIQUIDO
LIQUID
LIQUIDE
FLÜSSIGKEIT

AREA UTILE DEL PISTONE IDRAULICO
WORKING AREA OF THE HYDRAULIC PISTON
AIRE UTILE DU PISTON HYDRAULIQUE
ARBEITSBEREICH HYDRAULIKKOLBEN

IL FINECORSA DEVE AVVENIRE SULLA PEDALIERA
THE STROKE IS LIMITED BY PEDAL BOX
LA COURSE EST LIMITEE PAR LA POLONNIER
HUBBEGRENZUNG MUSS IM PEDALWERK ERFOLGEN

003 K021874N00: Fitting in PORT 21 IS MOUNTED WITH PLUG (NOT REPRESENTED)

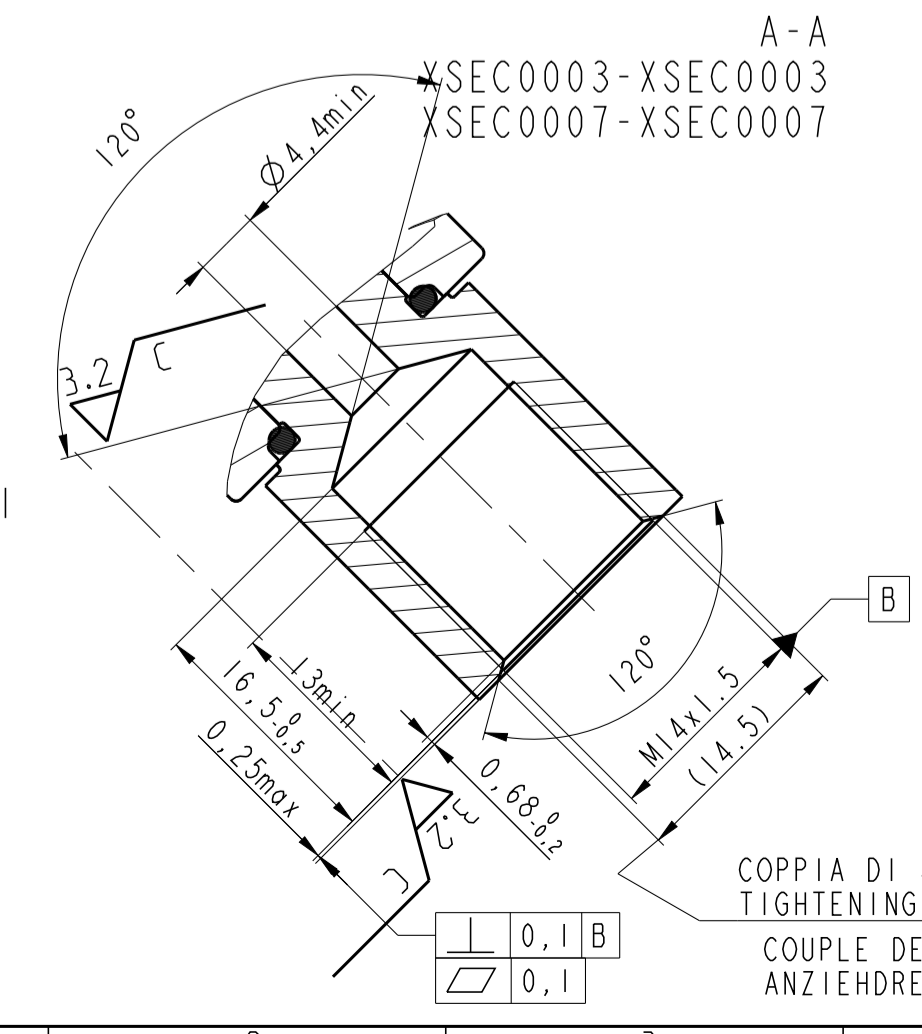
SIMBOLO GRAFICO
GRAPHIC SYMBOLE
SYMBOLE GRAPHIQUE
SCHALTZEICHEN



- RACCORDI
PORTS
ORIFICES
ANSCHLUESSE
- 1 ALIMENTAZIONE SUPPLY ALIMENTATION ENERGIEZUFLUSS
 - 21 AGLI UTILIZZATORI (idraulico) TO USERS (hydraulic) AUX UTILISATEURS (hydraulique) ZU DEN VERBRAUCHERN (hydraulisch)
 - 3 SCARICO EXHAUST ECHAPPEMENT ENTLUEFTUNG

0 C/C
0 S/C

COPPIA DI SERRAGGIO 25Nm max
TIGHTENING TORQUE
COUPLE DE SERRAGE
ANZIEHDREHMOMENT



COPPIA DI SERRAGGIO 30Nm max
TIGHTENING TORQUE
COUPLE DE SERRAGE
ANZIEHDREHMOMENT

100 mm

This document contains proprietary and confidential information and such information may not be disclosed without the prior written consent from the Knorr-Bremse organization.

003 3x7274979-FITTING & PLUG CORRECTION	2021.12.30	Xu Xiaoli
002 Y130987 - UNIFICATO CILINDRO	21/02/2012	Calcirola
K028951 E STAFFA K02863		
001 09056 - INSERIT RIFERIMENTO CLIENTE	21/09/09	Calcirola
000 07041 - EMISSIONE ERA DFR037B	11/04/07	Calcirola
Rev.	Revision Reference	Date Name
Numbers of described parts:	ISO 128-30	Special Characteristics: 0 [S/C] Surface Treatment: Length Unit: mm Scale: 1:1
K021874	First Angle Proj.	Tolerancing Principle ISO 14305 Material: Weight: -1,14 [03] kg
K021874N00	General Tolerances ISO 2768 - mK Made from: -	
CAD Model No.:	M285680	ISO 13715
Knorr-Bremse	CAD Sys.: PRO/ENGINEER Format A1	Clutch Servo
Systeme für Nutzfahrzeuge GmbH	Responsible Dept./Team: DDRC	Kupplungskraftverstärker
	Drawn: 2011/02/07	Servo embrayage
		Servofrictione
	Release Process Documentation in EDM, Level and Status Information in Watermark.	Drawing Number: Z030326
		Doc-Type: 10 Language: 91
		Draw-Rev: 003
		Sheet 1 of 1