

Technical Bulletin

Bulletin No.: TCH-003-014 Effective Date: 7/15/78 Page: 1 of 4

Subject: **Special E-6 Brake Valve**

A special version E-6 Brake Valve has been released for General Motors which differs from standard by omitting spring, piece number 290190, which normally is installed on top of the relay piston. This result in the No. 1 circuit (top) delivering approximately 5 psi greater pressure than the No. 2 circuit (lower). This pressure differential will diminish as the application pressure increases.

Five versions of the valve have been released per the schedule below.

<u>Pc. No.</u>	<u>Description</u>
101237	Firewall Mount – See Fig. 1
101238	Firewall Mount With Exhaust Elbow – See Fig. 2
101239*	Basic Valve 101240 With Mounting Studs Included – See Fig. 3
101240*	Basic Valve With Standard Exhaust – See Fig. 4
101241*	Basic Valve With Exhaust Elbow – See Fig. 5

*Use these piece numbers for service

Fig. 6 illustrates the standard upper body assembly, while Fig. 7 illustrates the upper body assembly with spring 290190 deleted as used in these valves.

The basic valve assemblies will be identified by the piece number stamped on the pad on the side of the upper body.



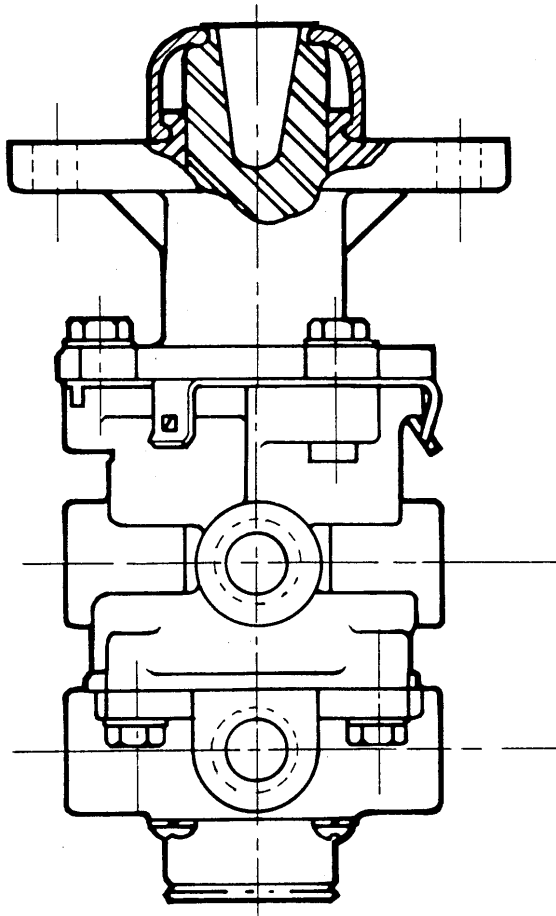


FIG. 1 Pc. No. 101237

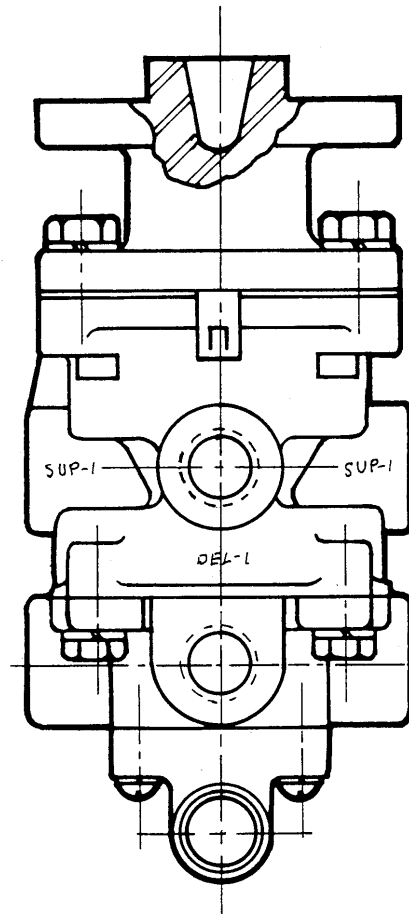


FIG. 2 Pc. No. 101238

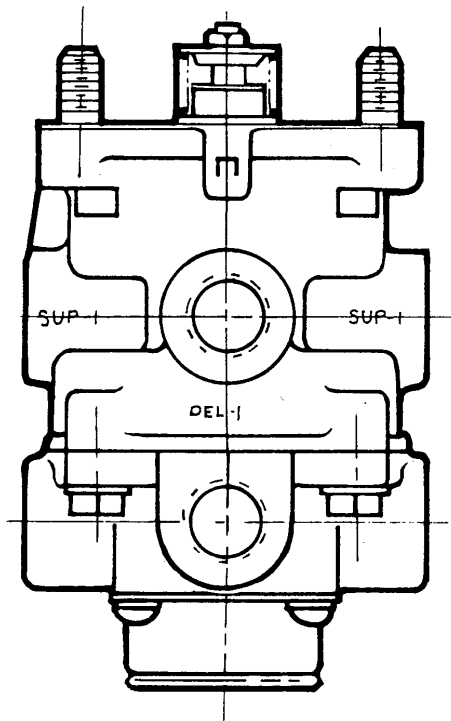


FIG. 3 Pc. No. 101239.

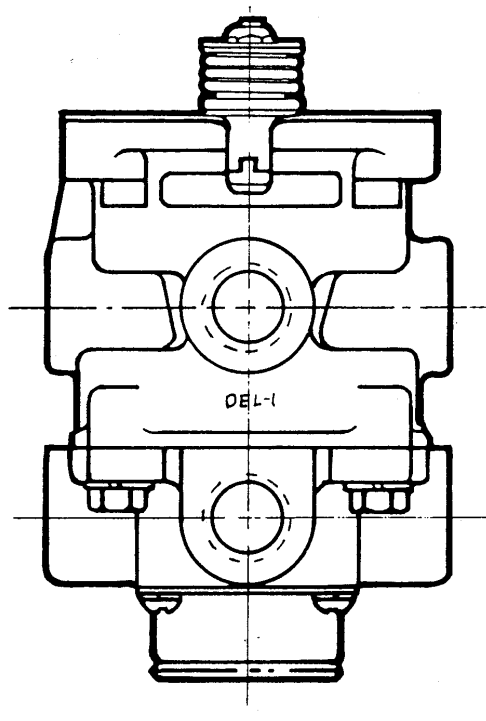


FIG. 4 Pc. No. 101240.

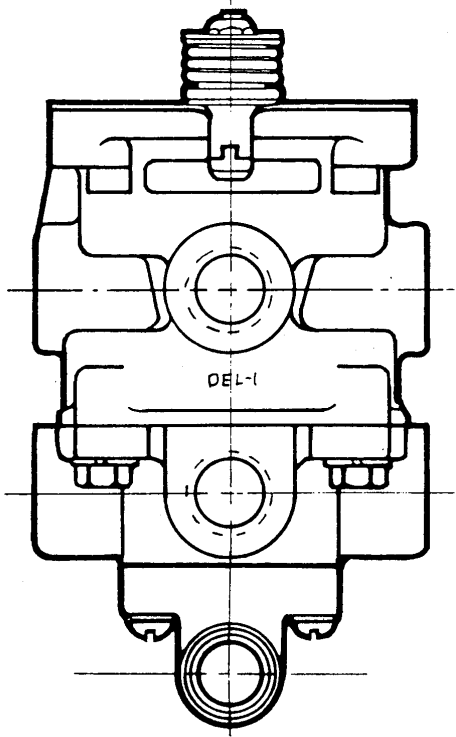


FIG. 5 Pc. No. 101241

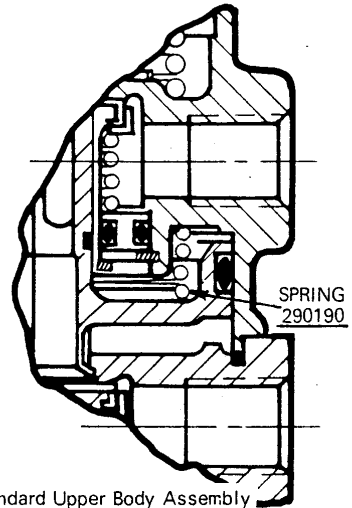


FIG. 6 Standard Upper Body Assembly

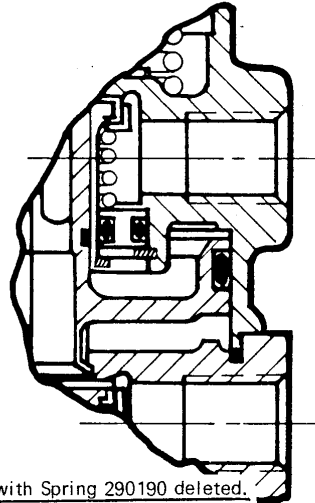


FIG. 7 Upper Body Assembly with Spring 290190 deleted.