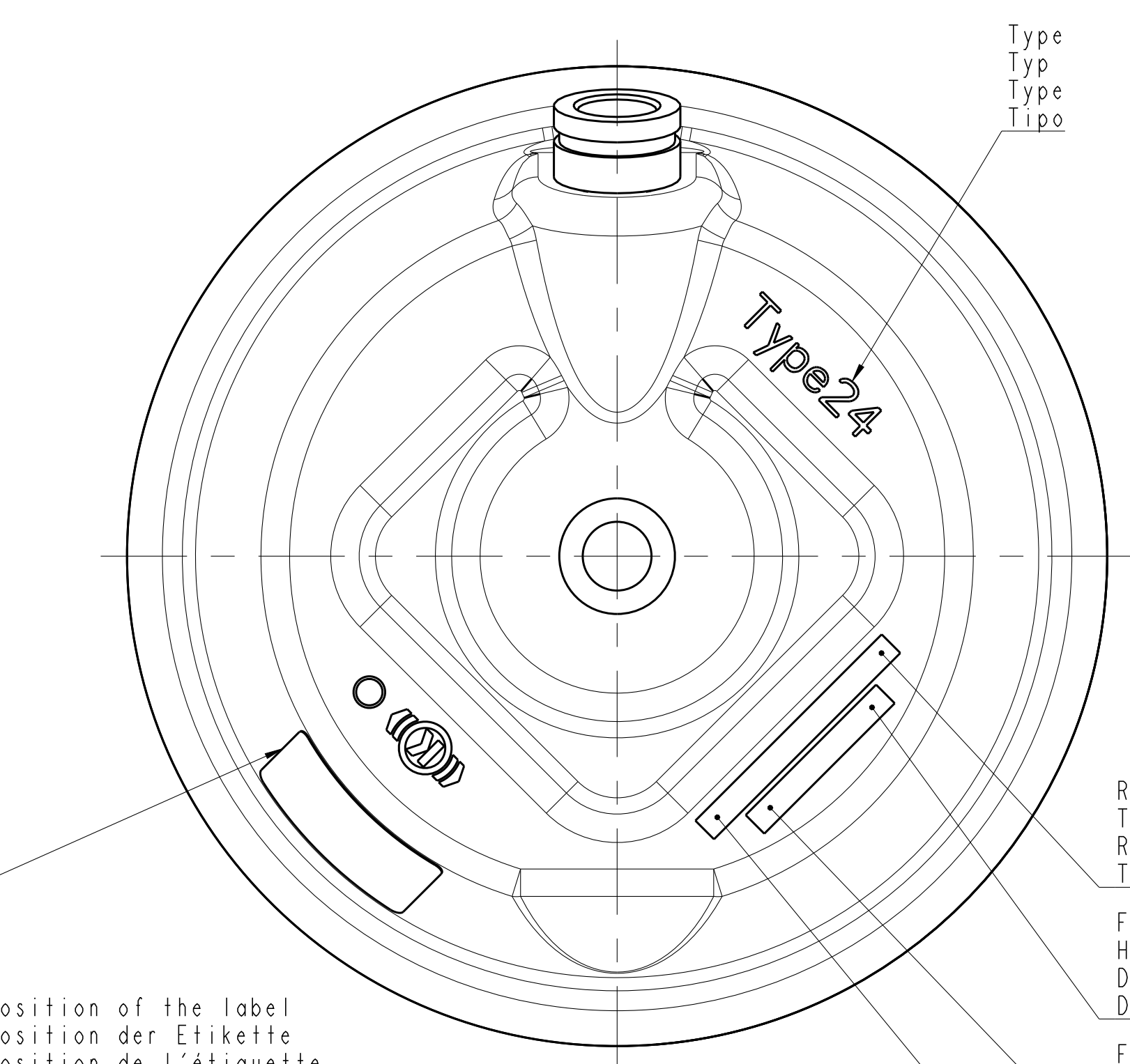


Tolerances/Toleranzen/Tollerances/Tolleranze					
Nominal dimensions in Nominalmaße in Cotes nominales en Dimensioni nominali in					
mm					
<6	>6	>30	>80	>120	>315
±1	±1.5	±2	±2.5	±3	±4

- General presentation, exact orientation of the components, see below.
- Allgemeine Darstellung, fuer genaue Teilorientierung; siehe Ansicht unten.
- Présentation générale, orientation exacte des pièces, voir vue en bas.
- Presentazione generale. Per l'orientazione corretta dei pezzi, vedere il disegno sotto.



Type
Typ
Tipo
Tipo

Reference number
Typen-Nr
Reference appareil
Tipo

Fabrication date
Herstellungsdatum
Date de fabrication
Data di produzione

Fabrication plant
Fertigungsplant-Nr
Site de fabrication
Stabilimento di montaggio

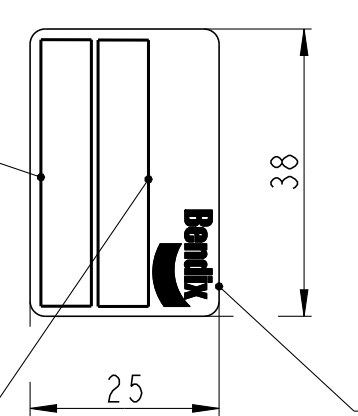
Part list number
Sachnummer
No nomenclature
Codice

Position of the label
Position der Etikette
Position de l'étiquette
Posizione dell'etichetta

Fabrication plant, fabrication date, serial number
Fertigungsplant-Nr, Herstellungsdatum, Seriennummer
Site de fabrication, date de fabrication, numéro de série
Stabilimento di montaggio, data di produzione, numero di serie

Label 2018735 with Bar Code 39 according to ISO/IEC 16388
Etiquette 2018735 mit Stängencode 39 nach ISO/IEC 16388
Étiquette K018735 avec code barres 39 suivant ISO/IEC 16388
Etichetta K018735 con codice sbarra 39 secondo ISO/IEC 16388

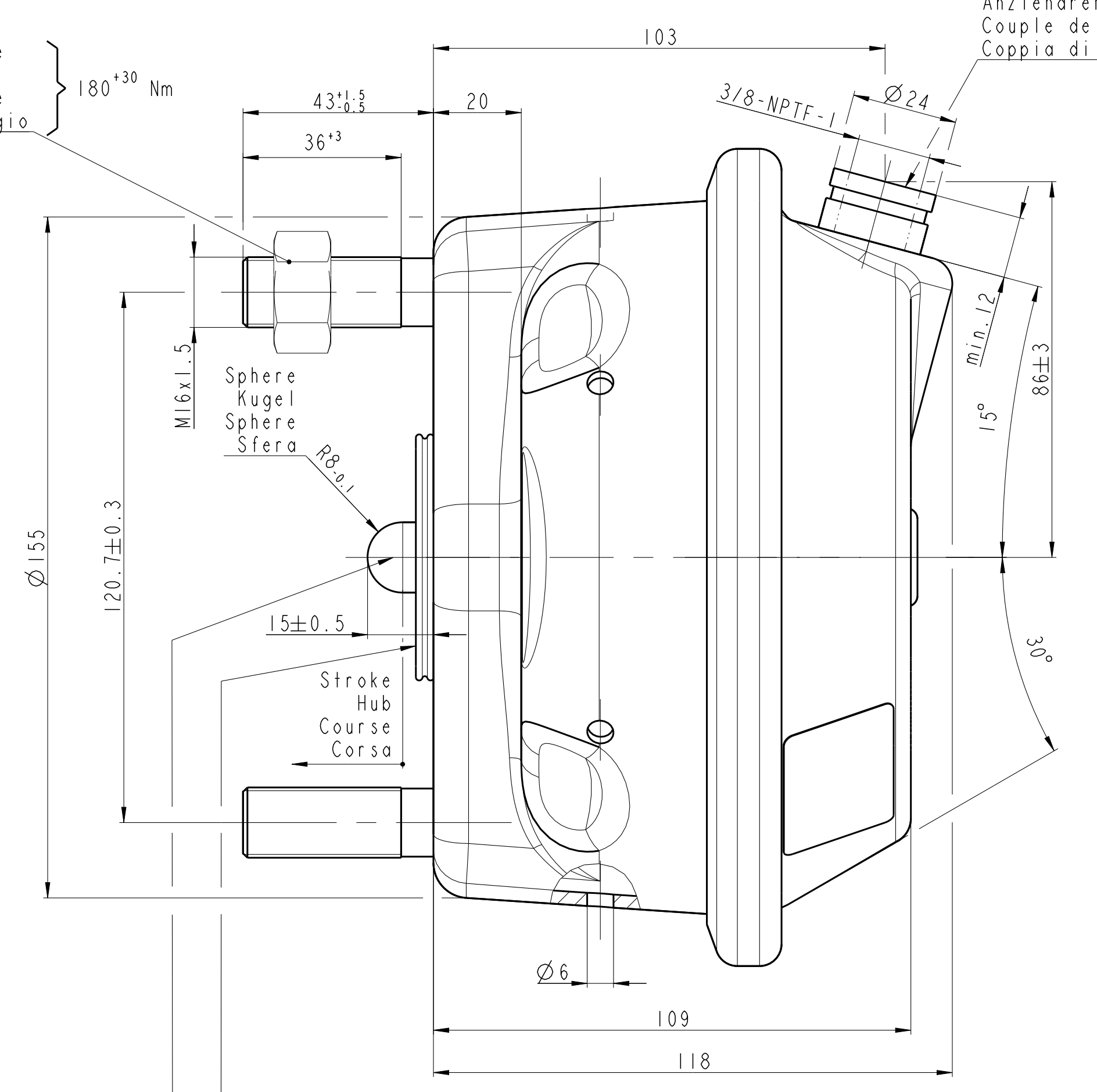
Part list number
Sachnummer
No nomenclature
Codice



Tightening torque
Anziehdrehmoment
Couple de serrage
Coppia di serraggio

180⁺³⁰ Nm

40±5 Nm

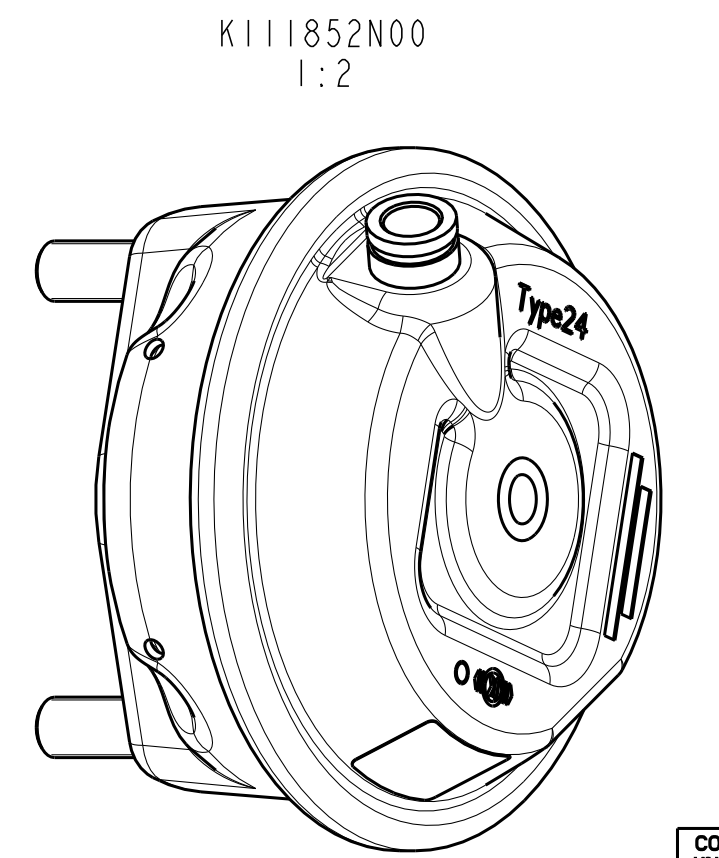
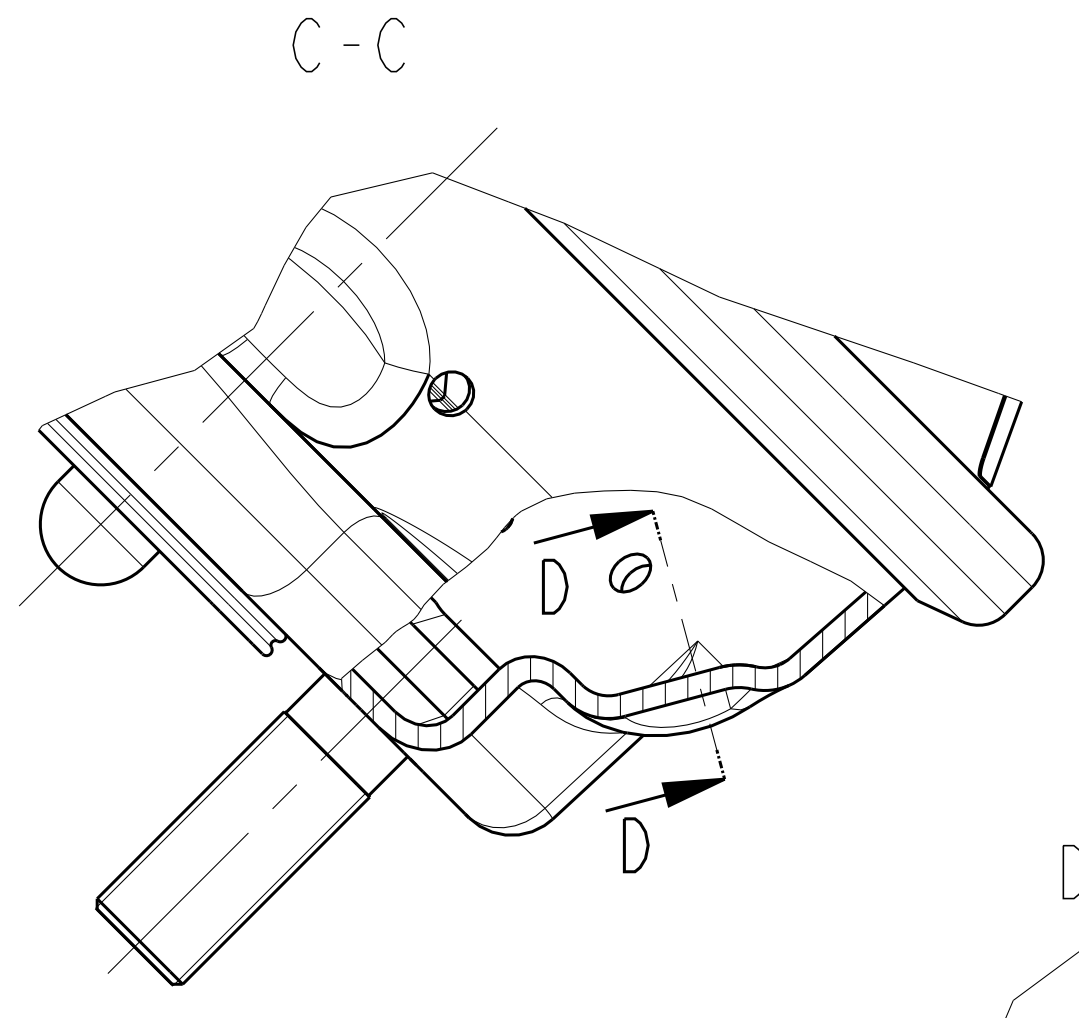
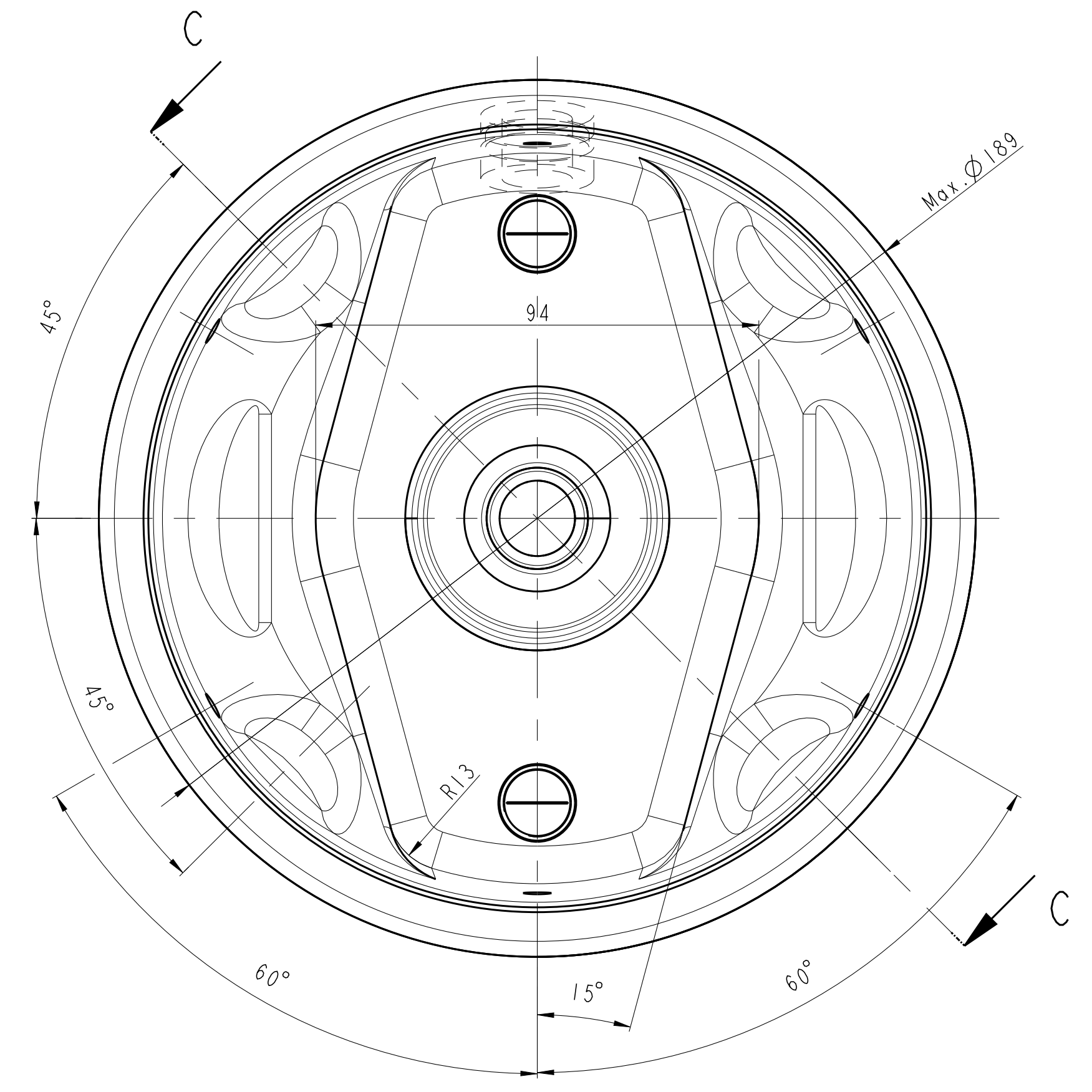


Sealing: pressure tight against secondary chamber
Abdichtung: druckdicht zum Sekundarraum
Étanchéité: étanche à la chambre secondaire
Ermelicità rispetto alla camera secondaria

0.4 bar

Max. pivoting angle of piston rod in all directions
Schwenkbereich der Kolbenstange allseitig max.
Angle de pivotement max. de la tige de piston de tous côtés
Angolo di rotazione mass. dell'asta pistone in tutti i direzioni:

4°



COMMON DRAWING WITH
KNORR-BREMSE LIBRECC
RESPONSIBILITY LIBRECC

Force of return spring at stroke 0 mm
Kraftabgabe der Rueckholfeder bei Hub 0 mm
Force du ressort de rappel à une course de 0 mm
Forza della molla di ritorno ad una corsa di 0 mm

F = 220⁺³⁰ N

Diagram of service brake
Diagramm der Betriebsbremse
Diagramme du frein de service
Diagramma del freno di servizio

Type 24

Graphic symbol
Schaltzeichen
Symbole graphique
Simbolo grafico

DIN ISO 1219

Temperature range
Therm. Anwendungsbereich
Plage de température
Campo termico

to
-40°C bis
+80°C
a

Max. operating pressure
Max. Betriebsdruck
Pression de service max.
Pressione di esercizio max.

10.2 bar

Permissible leakage
Zulaessige Undichtheit
Fuite admissible
Perdita d'aria ammissibile

$\dot{V}_h = 23 \text{ cm}^3/\text{min}$

Maximum pressure
Hochstdruck
Pression maximale
Pressione massima

13 bar

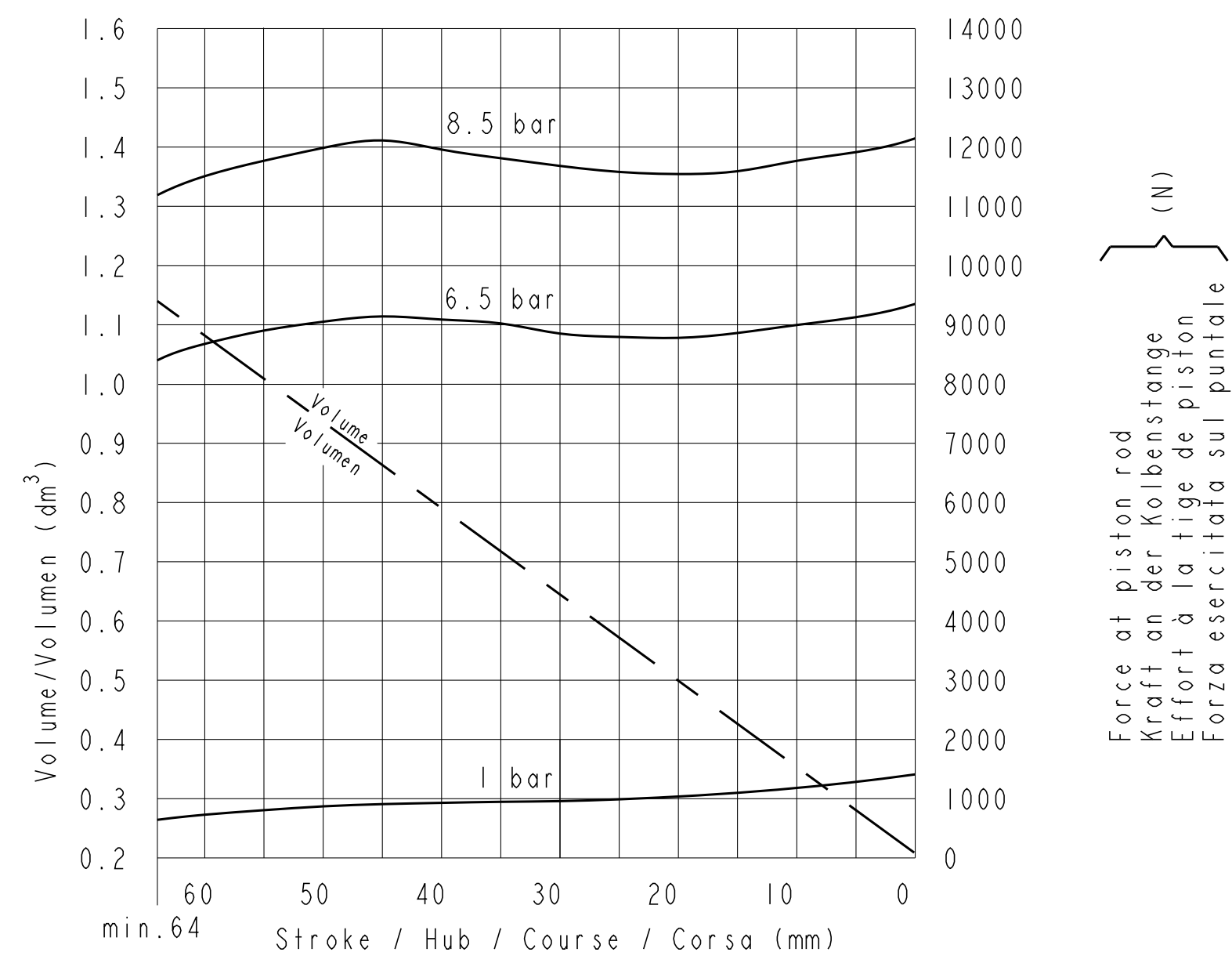
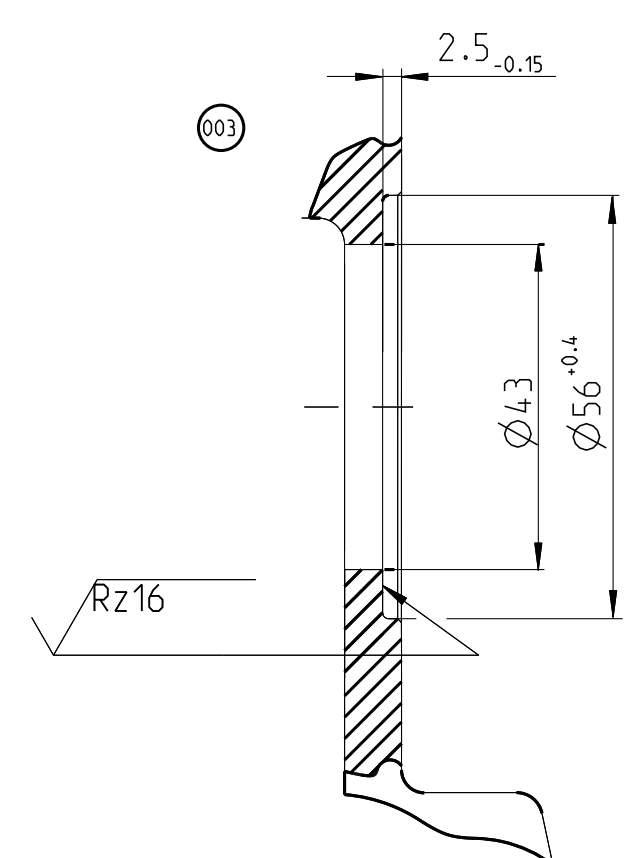
Medium: Air
Medium: Luft
Fluide: Air
Fluido: Aria

- Exhaust hole must be directed downwards when mounted
- Entlüftung muss im eingebauten Zustand nach unten zeigen
- L'orifice d'échappement doit être dirigé vers le bas en état monté
- Installato il foro di scarico dovrà essere rivolto verso il basso

- Breather holes opened
 - Aftmungsbohrungen geöffnet
 - Trous de respiration ouverts
 - Fori di respirazione aperti
- Ø6

Warning / Nachricht / Avertissement / Avvertimento

This brake actuator can only be used on applications for which it has been formally validated by Knorr-Bremse
Dieser Bremszylinder darf nur für Applikationen angewendet werden, für die er von Knorr-Bremse freigegeben worden ist
Cet actionneur de frein ne doit être utilisé que sur les applications pour lesquelles il a été formellement homologué par Knorr-Bremse
Questo cilindro a molla deve essere utilizzato solo per applicazioni benestruite formalmente dalla Knorr-Bremse



For additional information see specification C15651
Für zusätzliche Informationen siehe Spezifikation C15651
Pour toutes informations complémentaires voir la spécification C15651
Per ulteriori informazioni vedere la specifica C15651

K16526N00	K15235N00	K14189N00	K111856N00	K111854N00	K111852N00
K16526N00	K152352N00	K141890N00	K111855N00	K111853N00	K111851N00

BS4557 - K16526N00	3.6 kg
BS4556 - K165261N00	3.6 kg
BS4554 - K152353N00	3.6 kg
BS4553 - K152352N00	3.6 kg
BS4548 - K141891N00	3.6 kg
BS4547 - K141890N00	3.6 kg
BS4540 - K111856N00	3.6 kg
BS4529 - K111855N00	3.6 kg
BS4528 - K111854N00	3.6 kg
BS4527 - K111853N00	3.6 kg
BS4526 - K111852N00	3.6 kg
BS4525 - K111851N00	3.6 kg
KB-ref. number KB-Bestell-Nr KB-No de réf. Codice KB	Weight Gewicht Masse

Type 24

ISO 129-30
207271

001 C8024929 - stocking, interface 08/02/2016 Knorr
002 C8024929 - 2 new PNs 08/03/2017 Knorr
003 C8024945 - new PNs 22/08/2016 Knorr
004 C8024948 - 1st release 02/07/2016 Knorr

Numbers of described parts: 1
See table 1
CAD Model No.:
001
002
003
004

Special Characteristics: 0
General Tolerances:
Material:
Part from:
Knorr-Bremse Group

Surface Treatment:
Length Unit: mm
Scale: 1:1
Weight: See table
kg

Doc-Type: 03
Language: 1
Sheet: 1 of 1