

Function

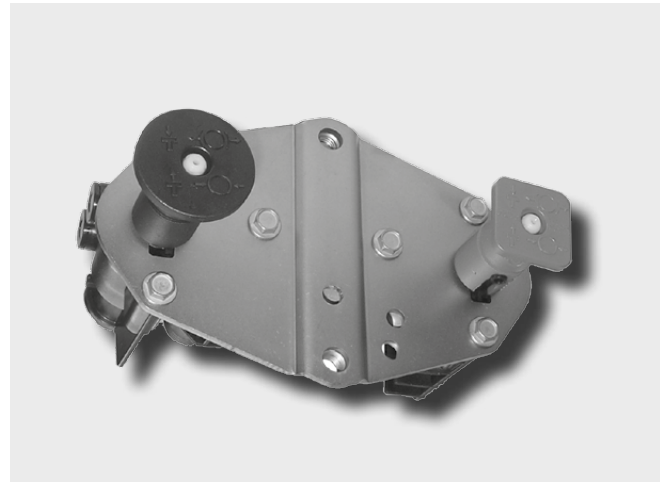
The **Park/Shunt Valve** incorporates the park and shunt (manoeuvring) functions for use on trailers equipped with spring brake actuators.

The park function of the Park/Shunt Valve supplies and releases pressure to the spring portions of the spring brake actuators. Whether coupled or uncoupled, the red button must be pulled out to correctly park the trailer using its spring brake actuators.

The shunt function of the Park/Shunt Valve allows the service brakes of an uncoupled trailer to be released for manoeuvring purposes. In the absence of supply (red) line pressure to the trailer, pushing in the red button to release the parking brakes and then pushing in the black button supplies air pressure from the trailer reservoir to the emergency valve and thereby releases the service brakes. If the black button is left pushed in, when the trailer is re-coupled, air pressure in the supply (red) line will re-set the button to the 'driving' position so that the emergency valve is once again supplied with pressure from the towing vehicle.

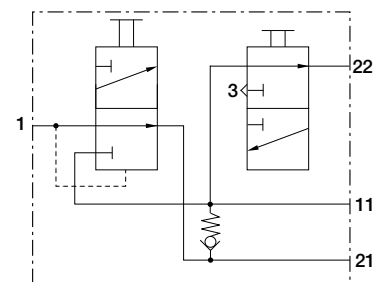
Park/Shunt Valve AE4247 is available with an integral non-return valve. This has been introduced to overcome the problem of spring brakes starting to apply in the event of reduced trailer reservoir pressure during prolonged ABS cycling.

When using a Park/Shunt Valve with integral non-return valve, extreme care should be taken to ensure that the trailer is correctly parked using the red button. If the trailer is parked on service brakes only, i.e. only supply (red) line is disconnected, and the trailer air pressure depletes, the spring brake actuators will not apply as the non-return valve holds the pressure in the spring portions.

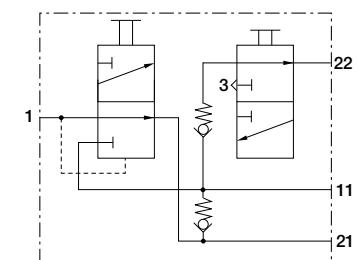


Standard Symbol as DIN ISO 1219

AE4230 - K111132



AE4247 - K111131



WARNING:

Always ensure that the Red Button is pulled out and the trailer is correctly parked, before coupling or uncoupling the trailer.

Technical Features

Operating pressure:	8.5 bar
Maximum operating pressure:	10.0 bar
Operating temperature range:	-40 °C to +80 °C
Weight:	0.6 kg approx.

Range Overview

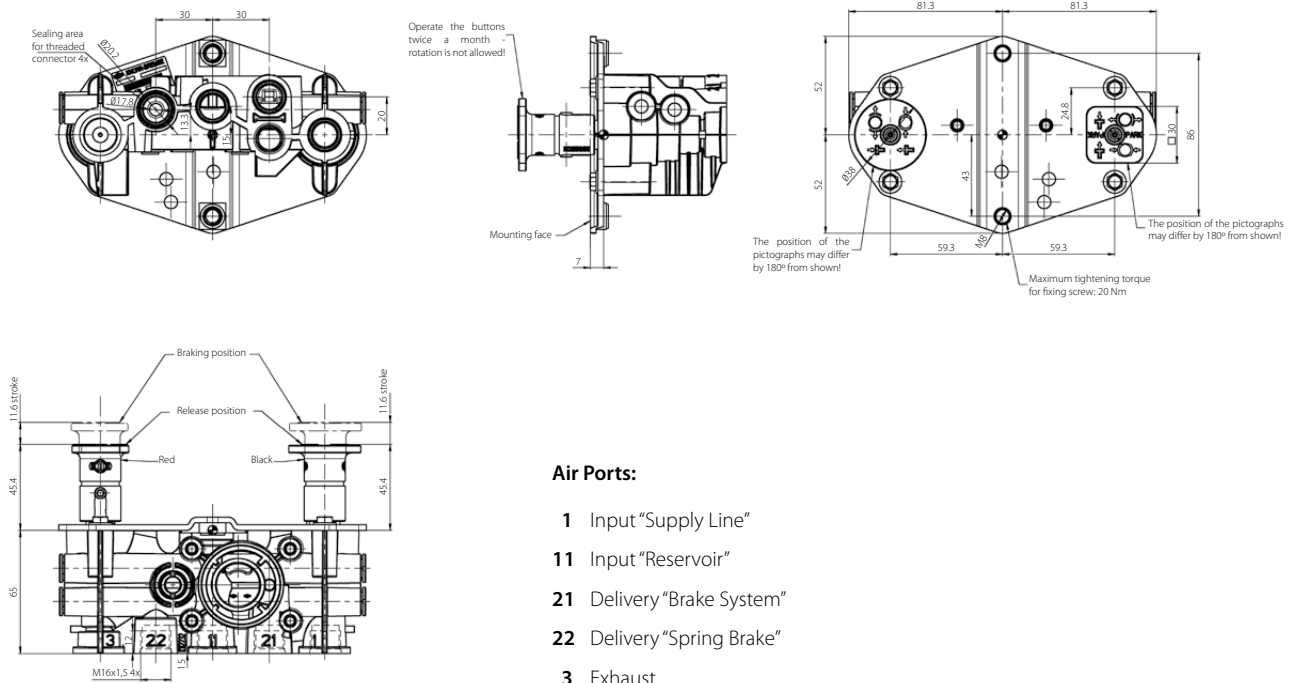
Part No.	Type No.	Air Port Threads	Non-Return Valve	Replaces
K111132 ¹⁾	AE4230	M16x1.5	without	I136128-AE4230 I136125-AE4246 I136129-AE4247
K111132 ¹⁾	AE4247		with	I136127-AE4247 I136131-AE4247

Information Plate: K056570 ¹⁾

¹⁾ The part number will carry a suffix, "N##" which defines the packaging requirements of different market sectors, e.g. N00, N50. Example: K056570N00 - is supplied without packaging.

Dimensions

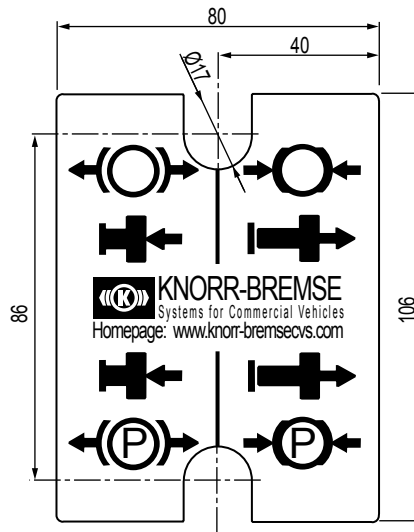
AE4230 AE4247



Air Ports:

- 1 Input "Supply Line"
- 11 Input "Reservoir"
- 21 Delivery "Brake System"
- 22 Delivery "Spring Brake"
- 3 Exhaust

K056570



Revision Details

Rev. 003	April 2019	New Layout



Knorr-Bremse Group

Knorr-Bremse Systems for Commercial Vehicles

Moosacher Strasse 80 | 80809 Munich | Germany
Tel: +49 89 3547-0 | Fax: +49 89 3547-2767
WWW.KNORR-BREMSECVS.COM

Note

All information is subject to change. A printed version of this document may therefore not correspond to the latest revision. To obtain the latest version, please visit our website www.knorr-bremseCVS.com or contact a Knorr-Bremse representative in your area.

If service work is carried out on a vehicle based on information provided herein, it is the responsibility of the workshop to ensure the vehicle is fully tested and in full functional order before the vehicle is returned into service. Knorr-Bremse accepts no liability for problems caused as a result of appropriate tests not being carried out.

Copyright © Knorr-Bremse AG

All rights reserved, including industrial property rights applications. Knorr-Bremse AG retains any power of disposal, such as for copying and transferring.

Up-to-date information on our products can be found on our website www.knorr-bremsecvs.com

Disclaimer

The information contained herein is intended for the exclusive use of trained persons within the commercial vehicle industry, and must not be passed on to any third party. All recommendations regarding products and their servicing or usage are with reference to Knorr-Bremse products and should not be considered applicable to products from other manufacturers.

This information does not purport to be all-inclusive and no responsibility is assumed as a result of its use. We cannot accept any liability nor offer any guarantee regarding data accuracy, completeness or timeliness.

The information does not represent any guarantee or ensured characteristics of the Products or Systems described. No liability can be accepted based on the information, its use, recommendations or advice provided. In no event may we be held liable for any damage or loss except in the case of wilful intent or gross negligence on our part, or if any mandatory legal provisions apply.

This disclaimer is an English translation of a German text, which should be referred to for all legal purposes. Any legal disputes arising from the use of this information shall be subject to German law.