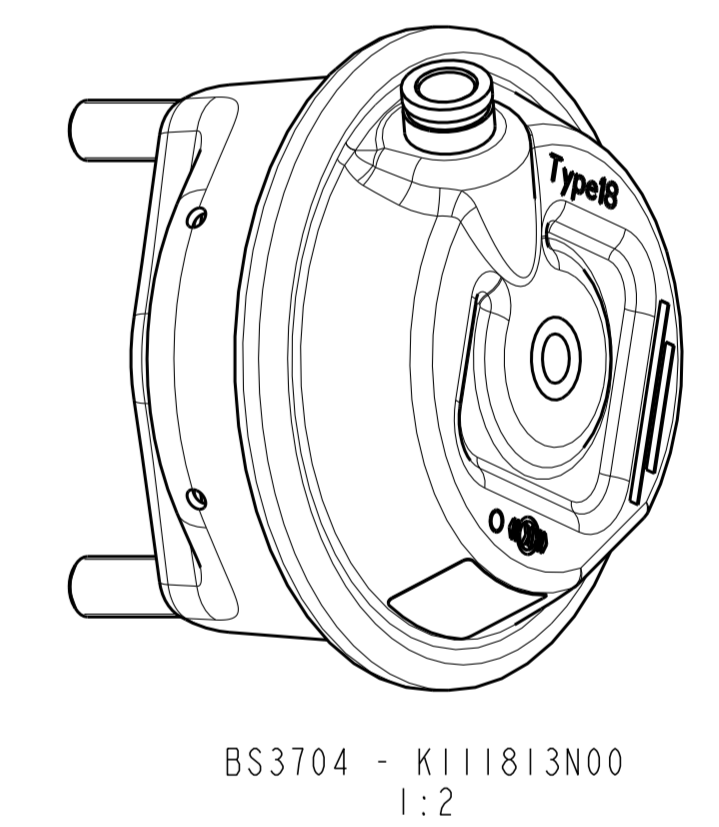
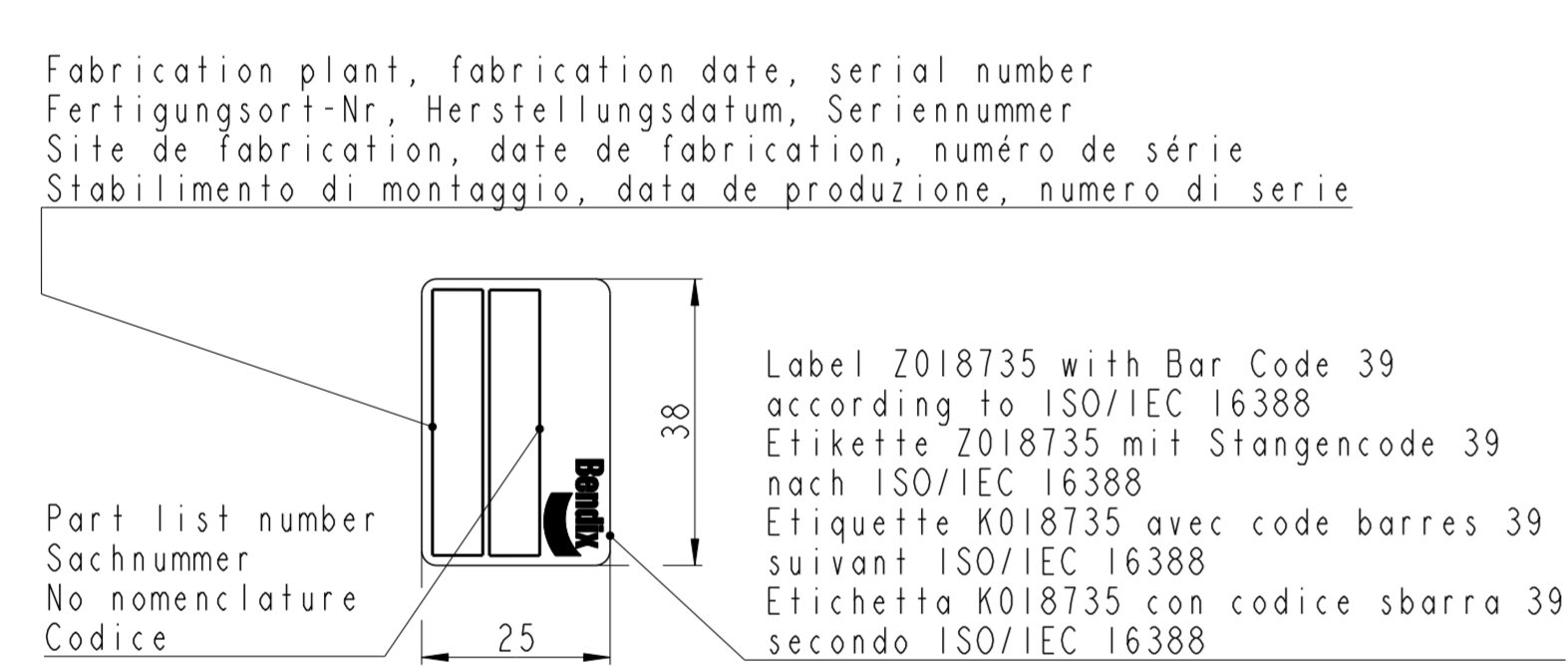
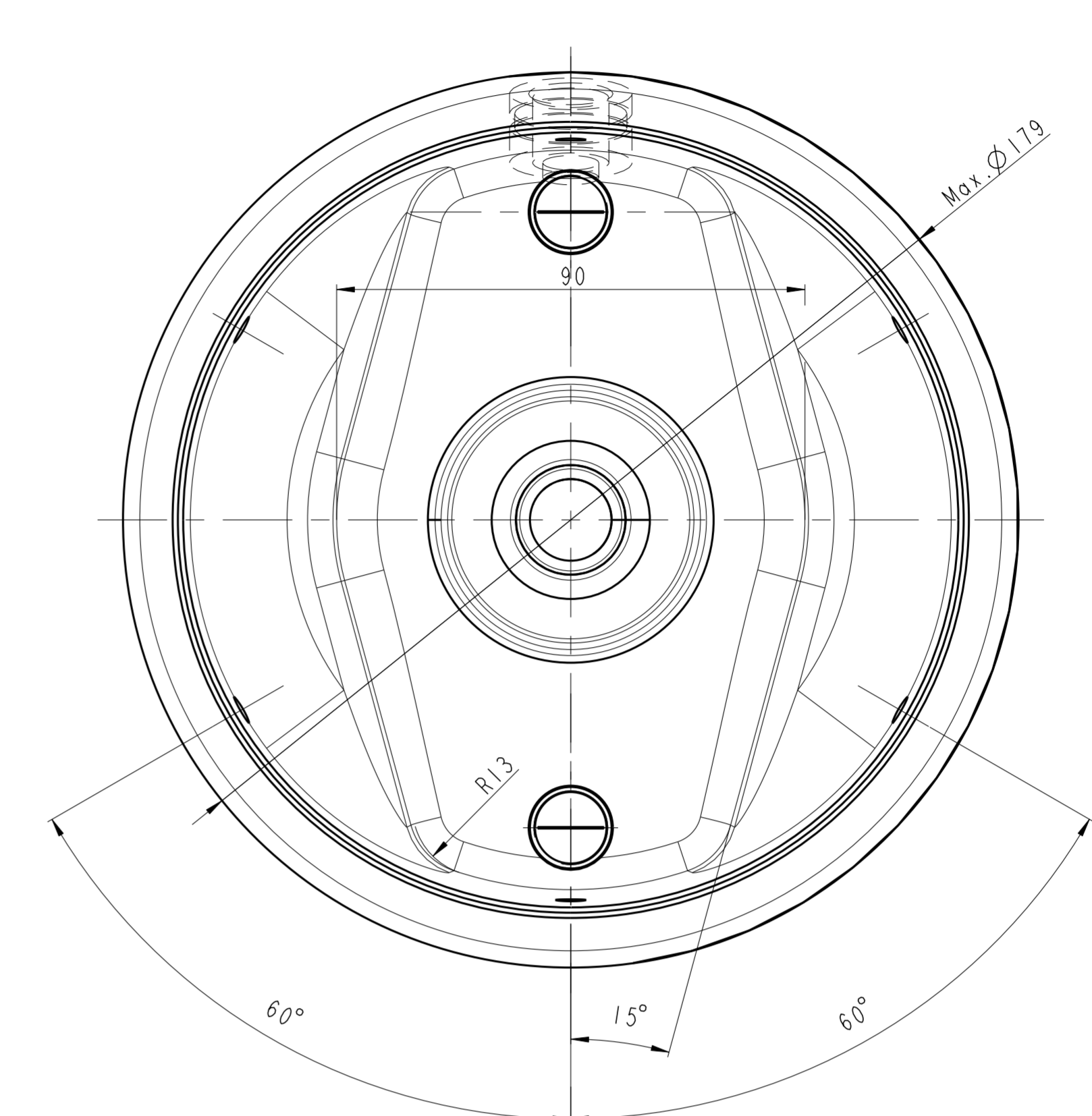
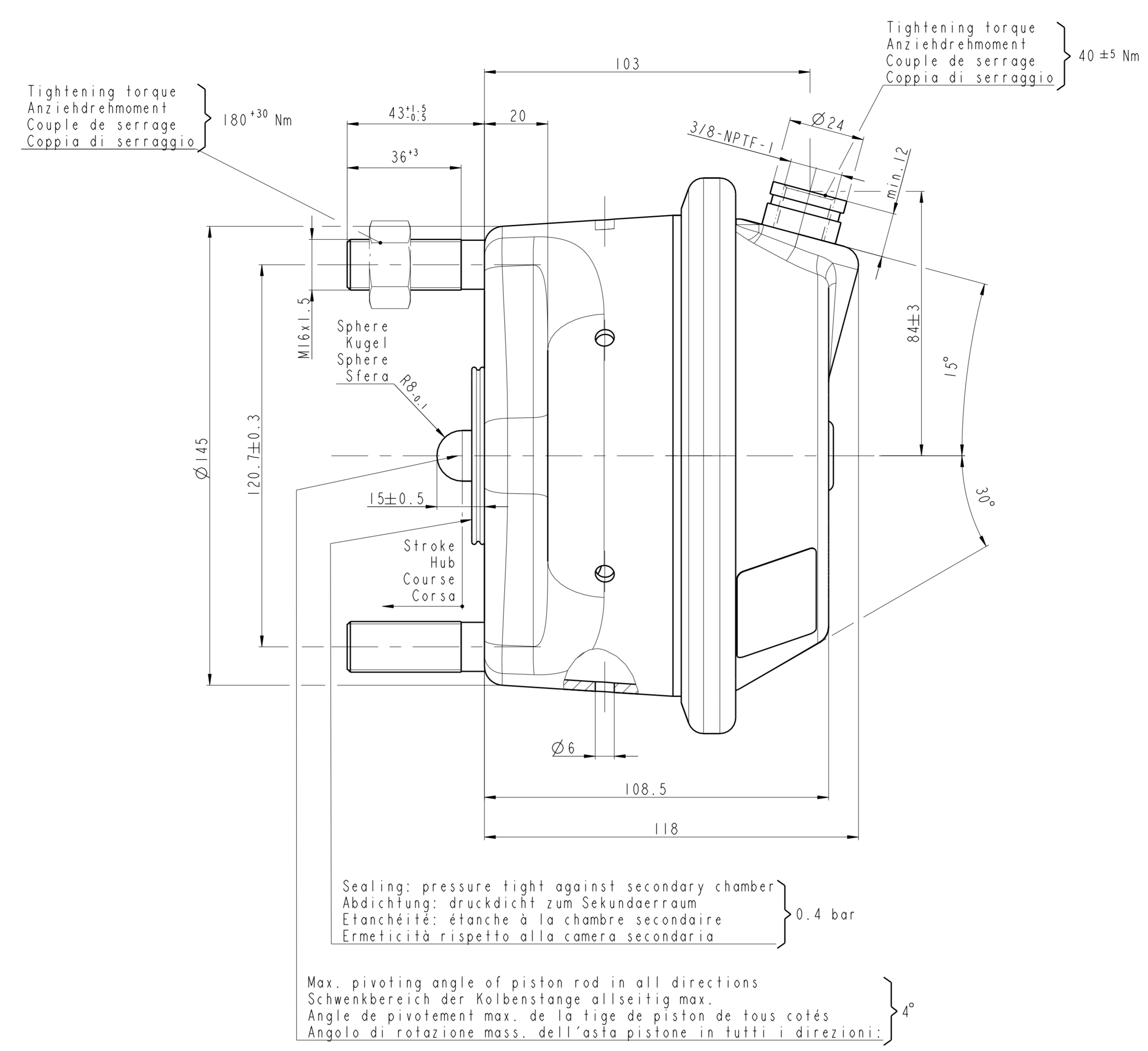
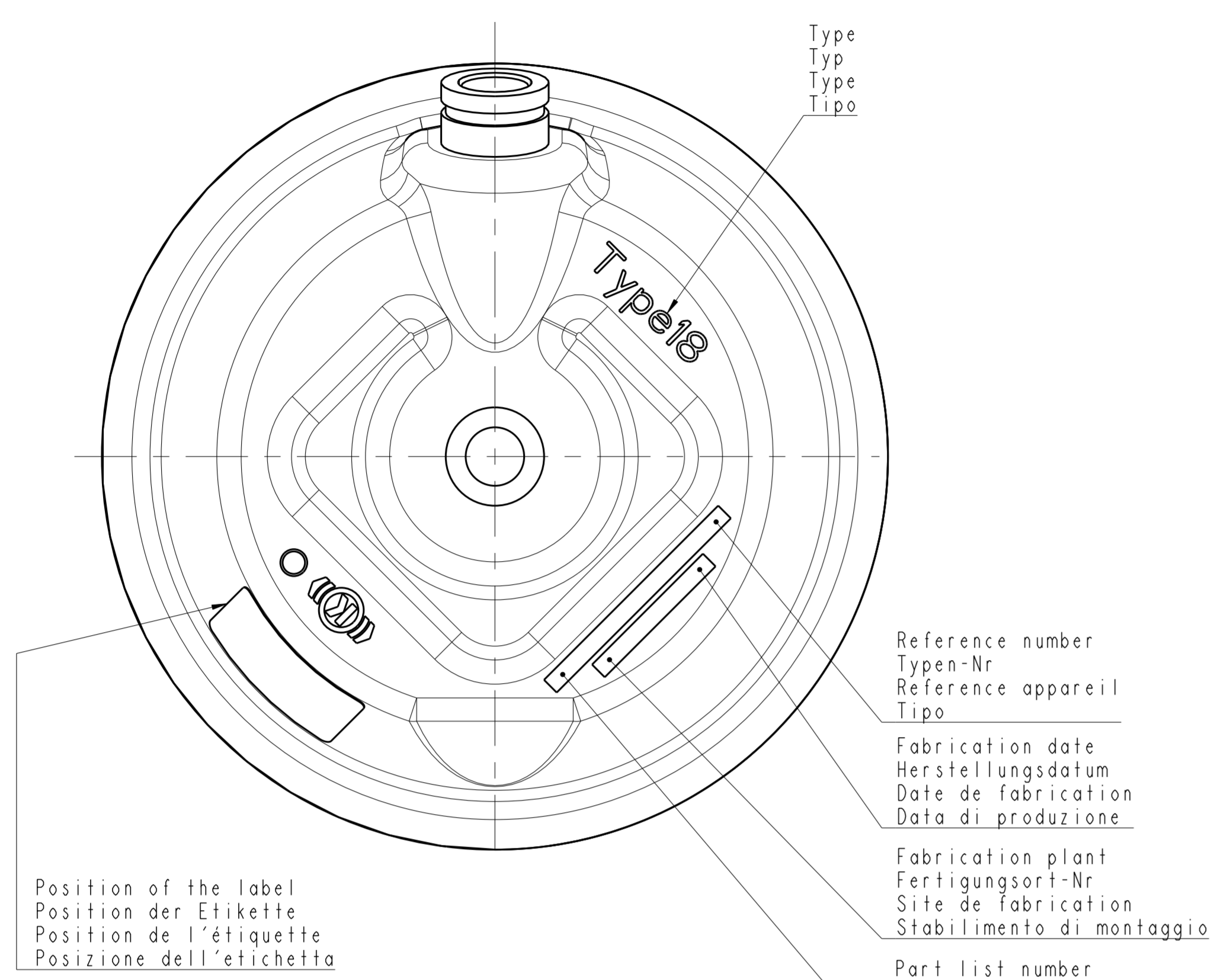


Tolerances/Toleranzen/Tollerances/Tolleranze					
Nominal dimensions in mm					
Nominalmasse in mm					
Cotes nominales en mm					
Dimensioni nominali in mm					
<6	>6	>30	>80	>120	>315
±1	±1.5	±2	±2.5	±3	±4

- General presentation, exact orientation of the components, see below.
 - Allgemeine Darstellung, fuer genaue Teilorientierung: siehe Ansicht unten.
 - Présentation générale, orientation exacte des pièces, voir vue en bas.
 - Presentazione generale. Per l'orientazione corretta dei pezzi, vedere il disegno sotto.



COMMON DRAWING WITH KNORR-BREMSE REFERENCE LIBRARY

Force of return spring at stroke 0 mm
Kraftabgabe der Ruckholfeder bei Hub 0 mm
Force du ressort de rappel à une course de 0 mm
Forza della molla di ritorno ad una corsa di 0 mm } F = 220⁺³⁰₋₂₀ N

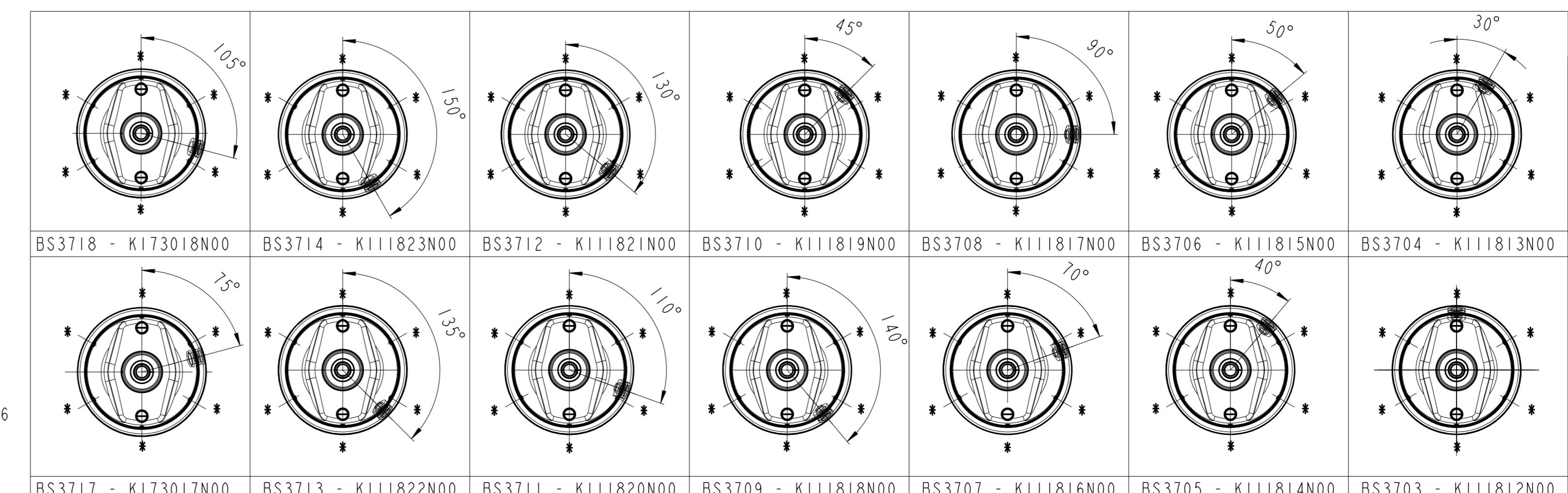
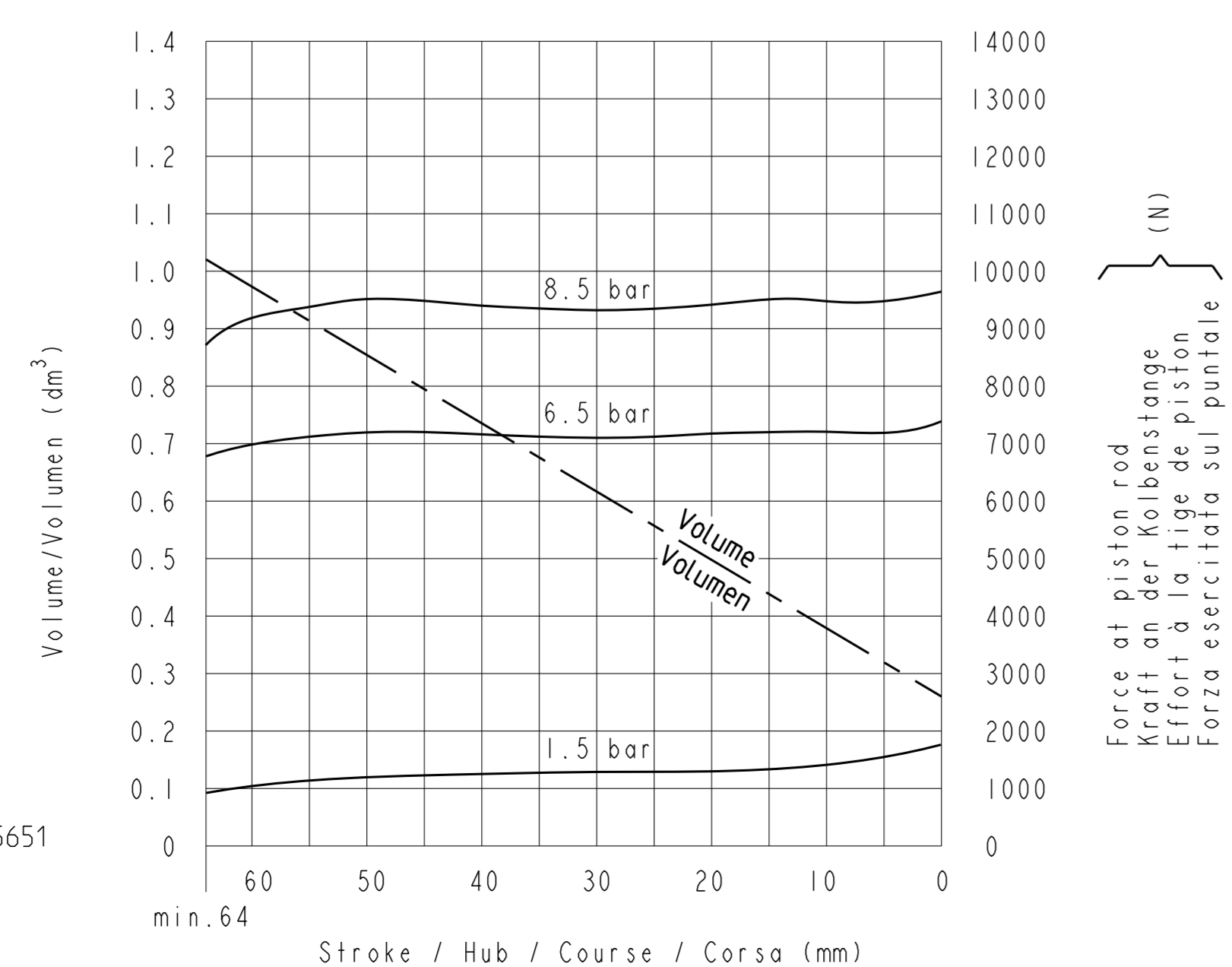
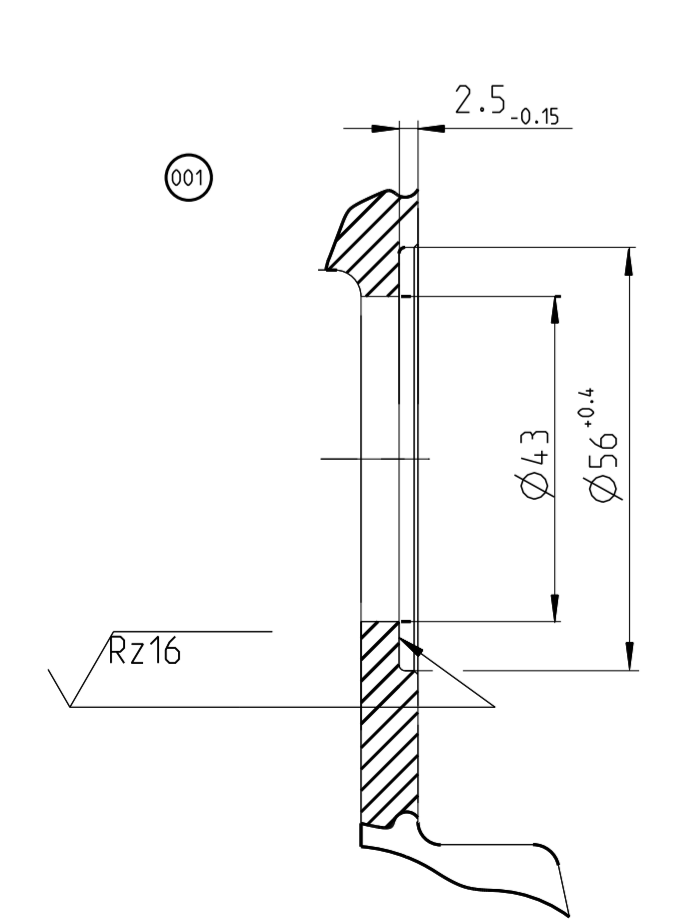
Diagram of service brake
Diagramm der Betriebsbremse
Diagramme du frein de service
Diagramma del freno di servizio } Type 18



- Exhaust hole must be directed downwards when mounted
- Entlüftung muss im eingebauten Zustand nach unten zeigen
- L'orifice d'échappement doit être dirigé vers le bas en état monté
- Installato il foro di scarico dovrà essere rivolto verso il basso

Warning / Nachricht / Avertissement / Avvertimento

This brake actuator can only be used on applications for which it has been formally validated by Knorr-Bremse. Dieser Bremszylinder darf nur für Applikationen angewendet werden, für die er von Knorr-Bremse freigegeben worden ist. Cet actionneur de frein ne doit être utilisé que sur les applications pour lesquelles il a été formellement homologué par Knorr-Bremse. Questo cilindro o molla deve essere utilizzato solo per applicazioni benestruite formalmente dalla Knorr-Bremse.



For additional information see specification C15651
Für zusätzliche Informationen siehe Spezifikation C15651
Pour toutes informations complémentaires voir la spécification C15651
Per ulteriori informazioni vedere la specifica C15651

BS3718 - K173018N00	3.2 kg
BS3717 - K173017N00	3.2 kg
BS3714 - K111823N00	3.2 kg
BS3713 - K111822N00	3.2 kg
BS3712 - K111821N00	3.2 kg
BS3711 - K111820N00	3.2 kg
BS3710 - K111819N00	3.2 kg
BS3709 - K111818N00	3.2 kg
BS3708 - K111817N00	3.2 kg
BS3707 - K111816N00	3.2 kg
BS3706 - K111815N00	3.2 kg
BS3705 - K111814N00	3.2 kg
BS3704 - K111813N00	3.2 kg
BS3703 - K111812N00	3.2 kg
KB-ref. number KB-Bestell-Nr KB-No de ref. Codice KB	Weight Gewicht Masse Massa

001 15059949 - two new PNs
000 14928498 - 01 release
Rev: Revision Reference

06/08/2018 KVP
02/07/2016 GMP

ISO 1219-30
First Angle Proj.

Special Characteristics
General Tolerances
Material: Brake Chamber (Disc)
Made from: Metall
Formel: Metallantriebsmechanik (Schrieb)
ISO 1219-30
Formel: Metallantriebsmechanik (Schrieb)
Response Dept./Team: ISO1
Vase à diaphragme disque
Elemento frenante (disco)
Date: 02/07/2016
Drawing Number: 2072705
Revision: 01
Knorr-Bremse Group

001
Type 18
1:1
1:2