



YOUR ONE-STOP SHOP FOR HYDRAULIC BRAKE PARTS? FORMULA BLUE.

Priced right. Reliable performance.

No other hydraulic program geared towards commercial vehicle fleets offers as comprehensive an offering and up to date catalog as the Formula Blue® line from Bendix CVS. Product coverage includes new and remanufactured brake calipers, premium rotors with industry leading fit and quality, a complete line of pads, as well as brake hardware and more.

Here's why Formula Blue is the smart choice for your operation:

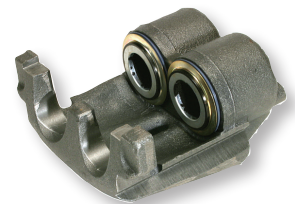
- One stop shop for all your hydraulic brake items light- and medium-duty class 1-6 vehicles
- Expanded import, bus and all makes coverage
- Easy to use and up-to-date online parts finder
- Brake pads and rotors
- New standard line of hydraulic brake pads covering Blue Bird, Ford®, Freightliner®, Hino, Isuzu, Sprinter, and more
- Lowest prepaid freight in the industry, when combined with other Bendix products
- Best warranty in the business



With more than 6,000 parts to choose from – and coverage through 2018 model year for virtually all domestic and import medium duty vehicles, including Sprinter vans – this comprehensive offering has something for everyone.

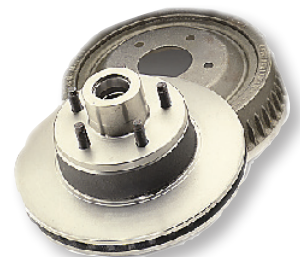
Calipers

- Reman and service new options
- Full line of Bendix® and Meritor® calipers
- Available in semi-loaded and loaded applications
- Superior quality control minimizes service related issues



Rotors

- OEM design and metallurgy means exact fit and function
- OE brake performance and heat dissipation
- Double disc ground finish virtually eliminates run out and disc variation issues
- E125 Rotor features e-coating (electro statically applied – not spray painted), resists rust for longer service life
- New E126 value line (non-coated)
- Reduced noise and vibration, smoother stops



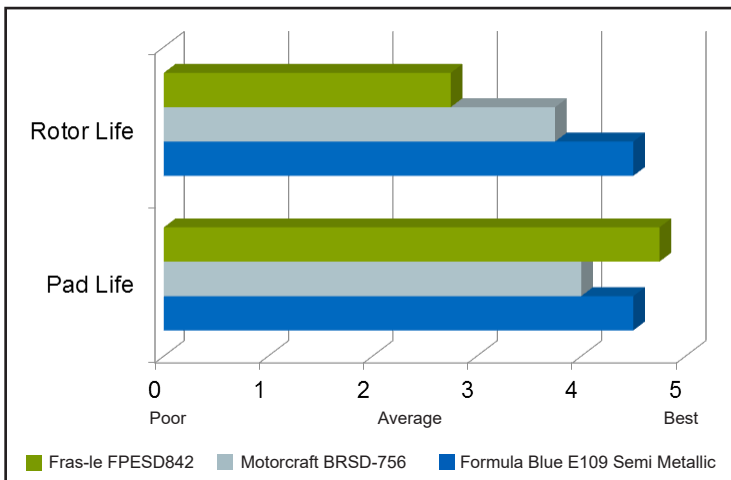
Brake Pads

- Proven stopping performance
- Long service life
- Superior friction attachment
- Noise resistant and kind to rotors
- Disc brake pads are available in three (3) different options – Standard, Premium, and Heavy Duty – to meet your budget and performance requirements
- New E107 Standard pad line for price conscious fleets



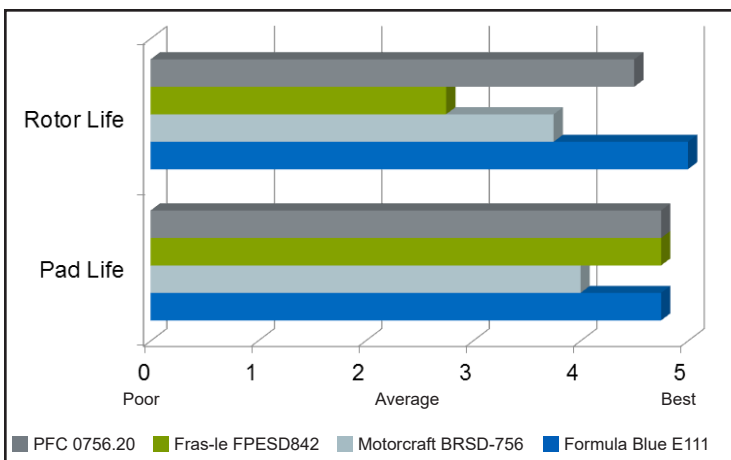
We put it to the test – so you don't have to.

Formula Blue® E109 Semi Metallic Pad vs. competitor pads



Choose our Premium duty pad – E109 – for long pad and rotor life. And this long pad life does not come at the expense of your rotor. Beware of rotor damage with some aggressive, ‘long life’ friction on the market today.

Formula Blue E111 Semi Metallic Pad vs. competitor pads



With our Heavy Duty friction – E111 – you'll get better rotor life and the same pad life – at a lower price.

Our comprehensive coverage makes it easy to find the Formula Blue part you need.

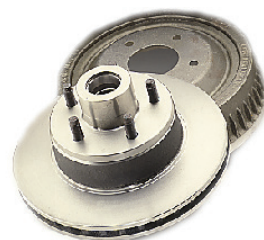
Rotor Cross Reference

| Meritor | Formula Blue |
|-------------|--------------|
| 23122527002 | E12588006 |
| 23122687002 | E12685013 |
| 23122688002 | E12685009 |
| 23122691 | E12584019 |
| 23122691002 | E12584019 |
| 23122693002 | E12585007 |
| 23122701002 | E12588007 |
| 23122703002 | E12584021 |
| 23122729002 | E12685006 |
| 23122729098 | E12685006 |
| 23122743002 | E12684022 |
| 23122897002 | E12688018 |
| 23122920002 | E12688011 |
| 23122945002 | E12588012 |
| 23122962002 | E12688013 |
| 23123041002 | E12685014 |
| 23123046002 | E12585015 |
| 23123296002 | E12685016 |
| 23123341002 | E12584025 |
| 23123434002 | E12585006 |
| 23123439002 | E12684027 |
| 23123440002 | E12685017 |
| 23123443002 | E12684020 |

| Meritor | Formula Blue |
|-------------|--------------|
| 23123458002 | E12684028 |
| 23123461002 | E12584031 |
| 23123468002 | E12587006 |
| 23123485002 | E12685006 |
| 23123486002 | E12685013 |
| 23123489002 | E12685017 |
| 23123494002 | E12587007 |
| 23123495002 | E12685016 |
| 23123498002 | E12684030 |
| 23123527002 | E12684029 |
| 23123528002 | E12584032 |
| 23123530002 | E12584031 |
| 23123532002 | E12585021 |
| 23123547002 | E12591018 |
| 23123550002 | E12688019 |
| 23123550004 | E12688019 |
| 23123552002 | E12688018 |
| 23123552004 | E12688018 |
| 23123557002 | E12685019 |
| 23123557004 | E12685019 |
| 23123557009 | E12685019 |
| 23123572002 | E12688020 |
| 23123572004 | E12688015 |

| Meritor | Formula Blue |
|-------------|--------------|
| 23123572004 | E12688020 |
| 23123573002 | E12688021 |
| 23123573004 | E12688021 |
| 23123574004 | E12585020 |
| 23123617004 | E12580010 |
| 23123618007 | E15680008 |
| 23123624007 | E12580009 |
| 23123625002 | E12580006 |
| 23123626002 | E12580007 |
| 23123642002 | E12591006 |
| 23123647002 | E12591007 |
| 23123648002 | E12688021 |
| 23123649002 | E12688018 |
| 23123664002 | E12688019 |
| 23123699008 | E12688019 |
| 23123700002 | E12684020 |
| 23123701008 | E12688018 |
| 23123730008 | E12688021 |
| 23123550009 | E12688019 |
| 23123552009 | E12688018 |
| 23123557009 | E12688019 |
| 23123572009 | E12688020 |
| 23123573009 | E12688021 |

| Perf. Friction (PFC) | Formula Blue |
|----------------------|--------------|
| 278.050.01 | E12567102 |
| 287.056.01 | E12566078 |
| 301.052.01 | E12567103 |
| 305.045.01 | E12566077 |
| 318.094.01 | E12570017 |
| 342.055.01 | E12568066 |
| 348.067.01 | E12568070 |
| 381.081.20 | E12588019 |
| 381.082.20 | E12588019 |
| 381.089.20 | E12588021 |
| 381.089.30 | E12588015 |
| 381.113.20 | E12588018 |
| 381.181.20 | E12588008 |
| 381.181.30 | E12588006 |
| 390.048.20 | E12588025 |
| 390.086.20 | E12585019 |
| 390.193.20 | E12585020 |



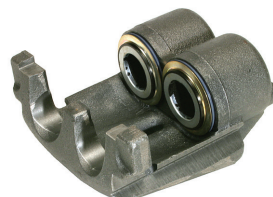
Caliper Cross Reference

| Meritor | Formula Blue |
|-------------|--------------|
| 60050150XL | E14784106 |
| 60450394 | E14684106 |
| 60450468 | E14684012 |
| 60450468002 | E14684012 |
| 60450468005 | E14684012 |
| 60450469 | E14684013 |
| 60450469002 | E14684013 |
| 60450469005 | E14684013 |
| 60450473 | E14684014 |
| 60450473 | E14684014 |
| 60450473001 | E14684014 |
| 60450473001 | E14684014 |
| 60450473004 | E14684014 |
| 60450473004 | E14684016 |
| 60450473005 | E14684014 |
| 60450474 | E14684015 |

| Meritor | Formula Blue |
|-------------|--------------|
| 60450474 | E14684017 |
| 60450474001 | E14684015 |
| 60450474001 | E14684017 |
| 60450474004 | E14684015 |
| 60450474004 | E14684017 |
| 60450474005 | E14684015 |
| 60450474005 | E14684017 |
| 60450475 | E14684106 |
| 60450475001 | E14684106 |
| 60450476 | E14688016 |
| 60450477 | E14688017 |
| 60450478 | E14688015 |
| 60450478007 | E14688015 |
| 60450479 | E14688014 |
| 60450480 | E14684016 |
| 60450481 | E14684017 |

| Meritor | Formula Blue |
|-------------|--------------|
| 60450481004 | E14684015 |
| 60450483 | E14684012 |
| 60460473005 | E14684016 |
| R4212277X | E14681011 |
| R4212278X | E14681010 |
| E-11117X | E146840161 |
| E-4238X | E146850081 |
| E-4245X | E146840061 |
| E-4237X | E146750061 |
| E-11756X | E146880101 |
| E-11750X | E146880081 |
| E-12067X | E146850141 |
| R42R55250 | E146850081 |
| R42R55251 | E146841061 |
| R42R55850 | E146880101 |
| R42R55314 | E146750061 |

| Meritor | Formula Blue |
|-----------|--------------|
| R42R55849 | E146880081 |
| R42R55717 | E146750071 |
| R42R55252 | E146840061 |
| E-11117GX | E14684016 |
| E-11734X | E14684012 |
| E-11733X | E14684013 |
| E-13205X | E14688017 |
| E-13707X | E14688014 |
| E11756X | E14688010 |
| E-11750X | E14688008 |
| E-4238GX | E14685008 |



Disc Pad Cross Reference

| Heavy Duty Meritor® | Heavy Duty Formula Blue® | Premium Meritor | Premium Formula Blue | Standard Meritor | Standard Formula Blue |
|---------------------|--------------------------|-----------------|----------------------|------------------|-----------------------|
| MMD786 | E11107860 | MD786 | E10907860 | MVD786 | E10707860 |
| MMD786A | E11107861 | MD786A | E10907861 | MVD786A | E10707861 |
| MMD784 | E11107840 | MD784 | E10907840 | MVD784 | E10707840 |
| MMD411 | E11104110 | MD411 | E10904110 | N/A | E10704110 |
| MMD225 | E11102250 | MD225 | E10902250 | N/A | E10702250 |
| MMD224 | E11102240 | MD224 | E10902240 | N/A | E10702240 |
| MMD1069 | E11110690 | MD1069 | E10910690 | N/A | E10710690 |
| MMD825 | E11108250 | MD825 | E10908250 | N/A | E10708250 |
| MMD1317 | E11113170 | MD1317 | E10913170 | N/A | N/A |
| MMD1316 | E11113160 | MD1316 | E10913160 | N/A | N/A |
| MMD769 | E11107690 | MD769 | E10907690 | MVD769 | E10707690 |

| Heavy Duty Perf. Friction (PFC) | Heavy Duty Formula Blue |
|---------------------------------|-------------------------|
| 0224.10 | E11102240 |
| 0225.10 | E11102250 |
| 0411.10 | E11104110 |
| 0784.20 | E11107840 |
| 0786.10 | E11107860 |
| 0786.11 | E11107861 |
| 0786.12 | E11107860 |
| 0786.13 | E11107861 |
| 0825.20 | E11108250 |
| 1316.10 | E11113160 |
| 1317.10 | E11113170 |
| 0769.10 | E11107690 |

Convenient online tools make shopping easy

Finding the right Formula Blue® part for your application and budget is easy with the Formula Blue Parts Guide available on foundationbrakes.com. It's as simple as entering your product type and vehicle model. And we've recently enhanced the Parts Guide to give you a more comprehensive shopping experience, so you can:

- Compare grades of pads and rotors (good/better/best)
- Shop loaded, semi-loaded and bare rotors
- Cross from other brands to Formula Blue
- More than 60K part numbers (OEM, Meritor, Euclid, Performance Friction, Fras-Le, Fleet Rite, Wagner, Raybestos)

Plus, with the online 2018 Supplement to the Formula Blue Hydraulic Brake Parts Master Catalog, you can review product photographs, dimensions and application information. Go to foundationbrakes.com and select the Formula Blue link on the left to access these useful tools.

Bendix has your back

After the sale, we're here to support you with field-tested sales and service professionals, an experienced field technical support team, and the Bendix Tech Team, available on our expert technical support phone line at 1-800-AIR-BRAKE. Reps are available 8:00 a.m.-6 p.m. Monday-Friday.

Comprehensive coverage • Outstanding Value • Proven Sales and Service Support
Expert Technical Assistance • Full Electronic Cross Reference

Log On and Learn from the Best

Online training that's available when you are – 24/7/365.
Visit brake-school.com.

To learn more about Formula Blue's full line of hydraulic brake parts, ask your Bendix account manager, call 1-866-610-9709 or visit foundationbrakes.com.

